

Precast Stone  
Balustrade Schedule

Width X Height	No.
830 X875	4
1455 X875	11
1330 X875	7
End Balustrade	2
625 X875	1
345 X875	1

UNDERSIDE OF EXISTING CORNICE

DETAILED VIEW OF EXISTING CORNICE

GENERAL NOTES

Drawing to be read in conjunction with all information by architects, structural engineer & service consultants.

The contractor is not to scale from this drawing. All written dimensions to be checked on site before work commences. Discrepancies, where identified, must be reported to the architect immediately.

This drawing is the property of Latitude Architects and Designers and must not be reproduced or disclosed to any unauthorised person either wholly or in part without written consent.

NOTE

See Clause C40+41 for specifications describing cleaning and repair to existing masonry .

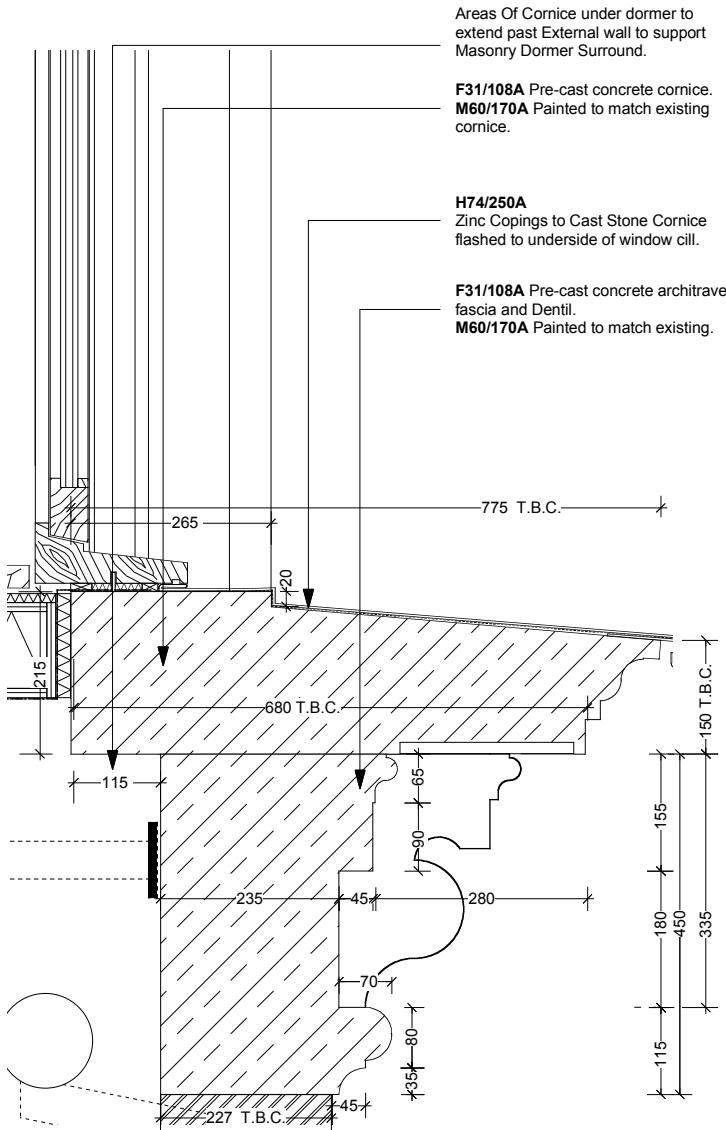
See Clause **M60/170A** for specifications describing masonry paint to precast concrete elements.

See Clause F31 for specifications describing replacement and new pre-cast concrete items

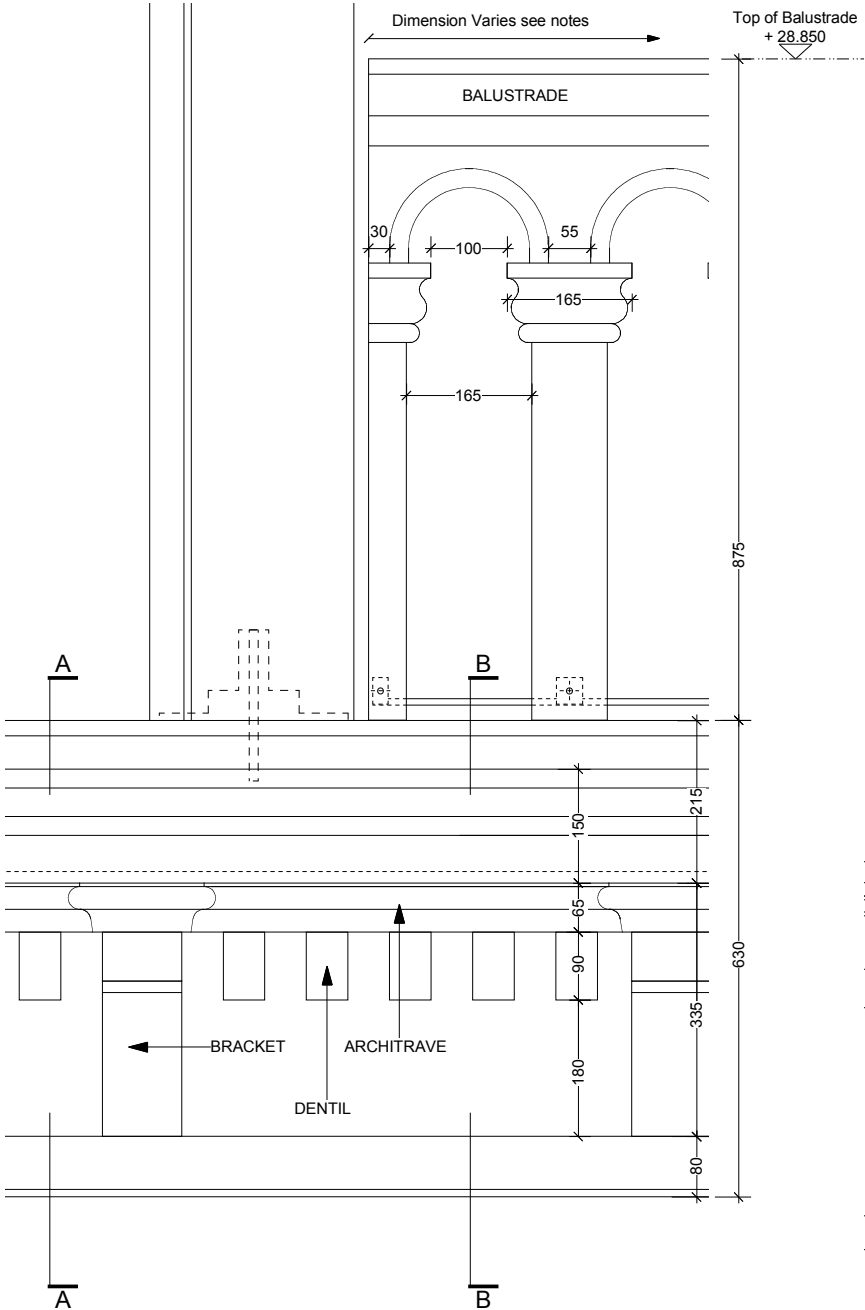
All pre-cast concrete to be painted to match original colour of existing window surrounds.

All dimensions of the cast stone and stucco items are indicative and based on dimensions of features as existing. Dimensions of features vary over length of facades. All features to be measured by SC and approved by the architect and Camden planning department.

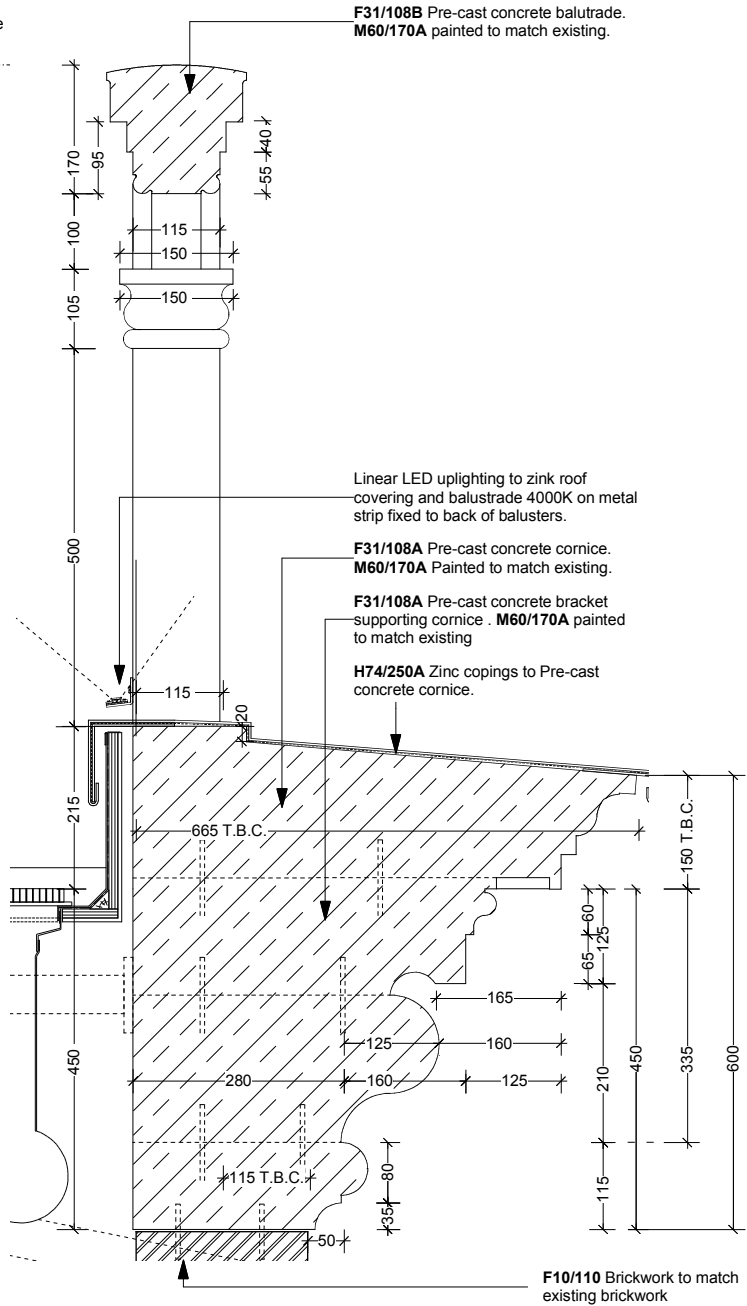
Support systems to Pre-cast concrete to be designed by supplier . Secondary Steelwork to SE Design.Supplier to co-ordinate fixings etc. to all secondary steelwork with S.Contractor.  
All details to be approved by C.A.



SECTION AA-THROUGH PRE-CAST CORNICE  
AND DORMER WINDOW



ELEVATION OF THE CORNICE AT JUNCTION OF  
STONE BALUSTRADE WITH DORMER SURROUND



SECTION AA-THROUGH PRE-CAST CORNICE  
AND BALUSTRADE

C	DOR	AV	13/01/2014	Issued for Construction. Plan and External lights added and general updates made.
B	AV	BG	30/05/2012	General revisions
A	DOR	AV	19/03/2012	Issued for Tender
Issue	Chkd	Drawn	Date	Description

Status	Job No.	Drwg No.	Issue
CONSTRUCTION	0706	[21.5]08	C

Drawing  
PROPOSED CORNICE AND  
REPLACEMENT STONE BALUSTRADE

Project  
THE LIGHTHOUSE BLOCK  
LONDON WC1X

latitude  
Latitude Architects  
15 Weller Street  
London SE1 1QU  
T +44 (0) 20 7234 0235  
F +44 (0) 20 7234 0245  
www.latitudearchitects.com