

Disclaimer:
This drawing has been prepared from a survey drawing that was based on rough survey measurements that were taken for OUTLINE DESIGN PURPOSES ONLY, which is NOT likely to be as precise as a full measured survey. As a result, no warranty as to be precision of the dimensions indicated or illustrated can be given. While this drawing can be used as a base drawing for construction and quotation purposes, due to the nature of the measurements on which it is based, it is VERY IMPORTANT that all dimensions are checked carefully before any work commences or any materials are ordered. If any discrepancies are noticed between this drawing and any other contract document then please contact us immediately.

Notes:

Site Boundary

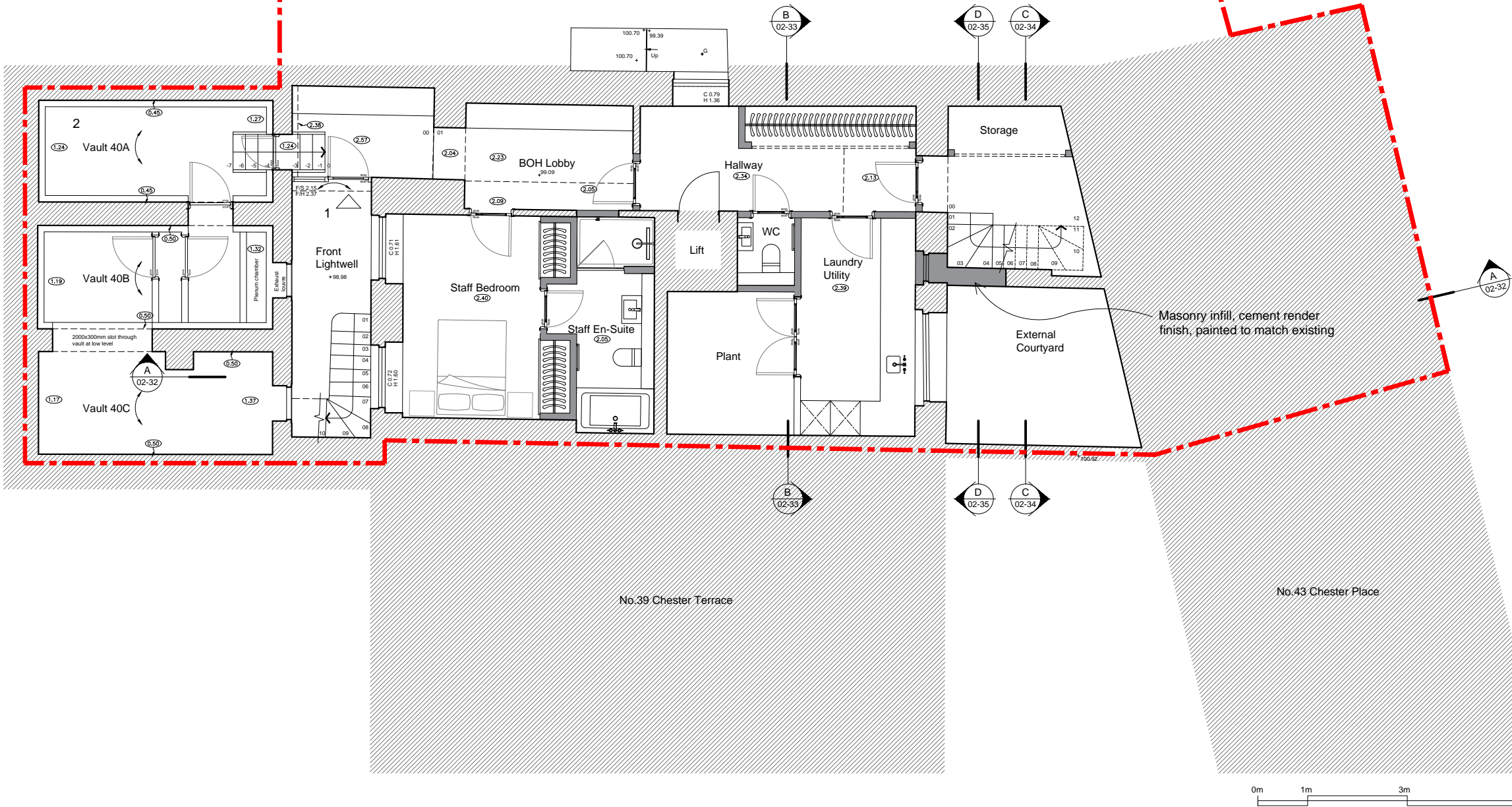
Entrance

Existing wall to remain

Proposed partitions

Material Key

- Proposed external door with with timber framed conservation style. Frames to be painted white.
- Proposed 600mm (TBC) within existing vaults.



P1	17/02/16	DH	Setting Out
P0	08/02/16	DH	Setting Out
REV	DATE	DRAWN	DESCRIPTION
<div><div><div></div><div></div><div></div><div></div><div></div><div></div><div></div><div></div><div></div><div></div><div></div><div></div><div></div><div></div><div></div><div></div><div></div><div></div><div></div><div></div><div></div><div></div><div></div><div></div><div></div><div></div><div></div><div></div><div></div><div></div><div></div><div></div><div></div><div></div><div></div><div></div><div></div><div></div><div></div><div></div><div></div><div></div><div></div><div></div><div></div><div></div><div></div><div></div><div></div><div></div><div></div><div></div><div></div><div></div><div></div><div></div><div></div><div></div><div></div><div></div><div></div><div></div><div></div><div></div><div></div><div></div><div></div><div></div><div></div><div></div><div></div><div></div><div></div><div></div><div></div><div></div><div></div><div></div><div></div><div></div><div></div><div></div><div></div><div></div><div></div><div></div><div></div><div></div><div></div><div></div><div></div><div></div><div></div><div></div><div></div><div></div><div></div><div></div><div></div><div></div><div></div><div></div><div></div><div></div><div></div><div></div><div></div><div></div><div></div><div></div><div></div><div></div><div></div><div></div><div></div><div></div><div></div><div></div><div></div><div></div><div></div><div></div><div></div><div></div><div></div><div></div><div></div><div></div><div></div><div></div><div></div><div></div><div></div><div></div><div></div><div></div><div></div><div></div><div></div><div></div><div></div><div></div><div></div><div></div><div></div><div></div><div></div><div></div><div></div><div></div><div></div><div></div><div></div><div></div><div></div><div></div><div></div><div></div><div></div><div></div><div></div><div></div><div></div><div></div><div></div><div></div><div></div><div></div><div></div><div></div><div></div><div></div><div></div><div></div><div></div><div></div><div></div><div></div><div></div><div></div><div></div><div></div><div></div><div></div><div></div><div></div><div></div><div></div><div></div><div></div><div></div><div></div><div></div><div></div><div></div><div></div><div></div><div></div><div></div><div></div><div></div><div></div><div></div><div></div><div></div><div></div><div></div><div></div><div></div><div></div><div></div><div></div><div></div><div></div><div></div><div></div><div></div><div></div><div></div><div></div><div></div><div></div><div></div><div></div><div></div><div></div><div></div><div></div><div></div><div></div><div></div><div></div><div></div><div></div><div></div><div></div><div></div><div></div><div></div><div></div><div></div><div></div><div></div><div></div><div></div><div></div><div></div><div></div><div></div><div></div><div></div><div></div><div></div><div></div><div></div><div></div><div></div><div></div><div></div><div></div><div></div><div></div><div></div><div></div><div></div><div></div><div></div><div></div><div></div><div></div><div></div><div></div><div></div><div></div><div></div><div></div><div></div><div></div><div></div><div></div><div></div><div></div><div></div><div></div><div></div><div></div><div></div><div></div><div></div><div></div><div></div><div></div><div></div><div></div><div></div><div></div><div></div><div></div><div></div><div></div><div></div><div></div><div></div><div></div><div></div><div></div><div></div><div></div><div></div><div></div><div></div><div></div><div></div><div></div><div></div><div></div><div></div><div></div><div></div><div></div><div></div><div></div><div></div><div></div><div></div><div></div><div></div><div></div><div></div><div></div><div></div><div></div><div></div><div></div><div></div><div></div><div></div><div></div><div></div><div></div><div></div><div></div><div></div><div></div><div></div><div></div><div></div><div></div><div></div><div></div><div></div><div></div><div></div><div></div><div></div><div></div><div></div><div></div><div></div><div></div><div></div><div></div><div></div><div></div><div></div><div></div><div></div><div></div><div></div><div></div><div></div><div></div><div></div><div></div><div></div><div></div><div></div><div></div><div></div><div></div><div></div><div></div><div></div><div></div><div></div><div></div><div></div><div></div><div></div><div></div><div></div><div></div><div></div><div></div><div></div><div></div><div></div><div></div><div></div><div></div><div></div><div></div><div></div><div></div><div></div><div></div><div></div><div></div><div></div><div></div><div></div><div></div><div></div><div></div><div></div><div></div><div></div><div></div><div></div><div></div><div></div><div></div><div></div><div></div><div></div><div></div><div></div><div></div><div></div><div></div><div></div><div></div><div></div><div></div><div></div><div></div><div></div><div></div><div></div><div></div><div></div><div></div><div></div><div></div><div></div><div></div><div></div><div></div><div></div><div></div><div></div><div></div><div></div><div></div><div></div><div></div><div></div><div></div><div></div><div></div><div></div><div></div><div></div><div></div><div></div><div></div><div></div><div></div><div></div><div></div><div></div><div></div><div></div><div></div><div></div><div></div><div></div><div></div><div></div><div></div><div></div><div></div><div></div><div></div><div></div><div></div><div></div><div></div><div></div><div></div><div></div><div></div><div></div><div></div><div></div><div></div><div></div><div></div><div></div><div></div><div></div><div></div><div></div><div></div><div></div><div></div><div></div><div></div><div></div><div></div><div></div><div></div><div></div><div></div><div></div><div></div><div></div><div></div><div></div><div></div><div></div><div></div><div></div><div></div><div></div><div></div><div></div><div></div><div></div><div></div><div></div><div></div><div></div><div></div><div></div><div></div><div></div><div></div><div></div><div></div><div></div><div></div><div></div><div></div><div></div><div></div><div></div><div></div><div></div><div></div><div></div><div></div><div></div><div></div><div></div><div></div><div></div><div></div><div></div><div></div><div></div><div></div><div></div><div></div><div></div><div></div><div></div><div></div><div></div><div></div><div></div><div></div><div></div><div></div><div></div><div></div><div></div><div></div><div></div><div></div><div></div><div></div><div></div><div></div><div></div><div></div><div></div><div></div><div></div><div></div><div></div><div></div><div></div><div></div><div></div><div></div><div></div><div></div><div></div><div></div><div></div><div></div><div></div><div></div><div></div><div></div><div></div><div></div><div></div><div></div><div></div><div></div><div></div><div></div><div></div><div></div><div></div><div></div><div></div><div></div><div></div><div></div><div></div><div></div><div></div><div></div><div></div><div></div><div></div><div></div><div></div><div></div><div></div><div></div><div></div><div></div><div></div><div></div><div></div><div></div><div></div><div></div><div></div><div></div><div></div><div></div><div></div><div></div><div></div><div></div><div></div><div></div><div></div><div></div><div></div><div></div><div></div><div></div><div></div><div></div><div></div><div></div><div></div><div></div><div></div><div></div><div></div><div></div><div></div><div></div><div></div><div></div><div></div><div></div><div></div><div></div><div></div><div></div><div></div><div></div><div></div><div></div><div></div><div></div><div></div><div></div><div></div><div></div><div></div><div></div><div></div><div></div><div></div><div></div><div></div><div></div><div></div><div></div><div></div><div></div><div></div><div></div><div></div><div></div><div></div><div></div><div></div><div></div><div></div><div></div><div></div><div></div><div></div><div></div><div></div><div></div><div></div><div></div><div></div><div></div><div></div><div></div><div></div><div></div><div></div><div></div><div></div><div></div><div></div><div></div><div></div><div></div><div></div><div></div><div></div><div></div><div></div><div></div><div></div><div></div><div></div><div></div><div></div><div></div><div></div><div></div><div></div><div></div><div></div><div></div><div></div><div></div><div></div><div></div><div></div><div></div><div></div><div></div><div></div><div></div><div></div><div></div><div></div><div></div><div></div><div></div><div></div><div></div><div></div><div></div><div></div><div></div><div></div><div></div><div></div><div></div><div></div><div></div><div></div><div></div><div></div><div></div><div></div><div></div><div></div><div></div><div></div><div></div><div></div><div></div><div></div><div></div><div></div><div></div><div></div><div></div><div></div><div></div><div></div><div></div><div></div><div></div><div></div><div></div><div></div><div></div><div></div><div></div><div></div><div></div><div></div><div></div><div></div><div></div><div></div><div></div><div></div><div></div><div></div><div></div><div></div><div></div><div></div><div></div><div></div><div></div><div></div><div></div><div></div><div></div><div></div><div></div><div></div><div></div><div></div><div></div><div></div><div></div><div></div><div></div><div></div><div></div><div></div><div></div><div></div><div></div><div></div><div></div><div></div><div></div><div></div><div></div><div></div><div></div><div></div><div></div><div></div><div></div><div></div><div></div><div></div><div></div><div></div><div></div><div></div><div></div><div></div><div></div><div></div><div></div><div></div><div></div><div></div><div></div><div></div><div></div><div></div><div></div><div></div><div></div><div></div><div></div><div></div><div></div><div></div><div></div><div></div><div></div><div></div><div></div><div></div><div></div><div></div><div></div><div></div><div></div><div></div><div></div><div></div><div></div><div></div><div></div><div></div><div></div><div></div><div></div><div></div><div></div><div></div><div></div><div></div><div></div><div></div><div></div><div></div><div></div><div></div><div></div><div></div><div></div><div></div><div></div><div></div><div></div><div></div><div></div><div></div><div></div><div></div><div></div><div></div><div></div><div></div><div></div><div></div><div></div><div></div><div></div><div></div><div></div><div></div><div></div><div></div><div></div><div></div><div></div><div></div><div></div><div></div><div></div><div></div><div></div><div></div><div></div><div></div><div></div><div></div><div></div><div></div><div></div><div></div><div></div><div></div><div></div><div></div><div></div><div></div><div></div><div></div><div></div><div></div><div></div><div></div><div></div><div></div><div></div><div></div><div></div><div></div><div></div><div></div><div></div><div></div><div></div><div></div><div></div><div></div><div></div><div></div><div></div><div></div><div></div><div></div><div></div><div></div><div></div><div></div><div></div><div></div><div></div><div></div><div></div><div></div><div></div><div></div><div></div><div></div><div></div><div></div><div></div><div></div><div></div><div></div><div></div><div></div><div></div><div></div><div></div><div></div><div></div><div></div><div></div><div></div><div></div><div></div><div></div><div></div><div></div><div></div><div></div><div></div><div></div><div></div><div></div><div></div><div></div><div></div><div></div><div></div><div></div><div></div><div></div><div></div><div></div><div></div><div></div><div></div><div></div><div></div><div></div><div></div><div></div><div></div><div></div><div></div><div></div><div></div><div></div><div></div><div></div><div></div><div></div><div></div><div></div><div></div><div></div><div></div><div></div><div></div><div></div><div></div><div></div><div></div><div></div><div></div><div></div><div></div><div></div><div></div><div></div><div></div><div></div><div></div><div></div><div></div><div></div><div></div><div></div><div></div><div></div><div></div><div></div><div></div><div></div><div></div><div></div><div></div><div></div><div></div><div></div><div></div><div></div><div></div><div></div><div></div><div></div><div></div><div></div><div></div><div></div><div></div><div></div><div></div><div></div><div></div><div></div><div></div><div></div><div></div><div></div><div></div><div></div><div></div><div></div><div></div><div></div><div></div><div></div><div></div><div></div><div></div><div></div><div></div><div></div><div></div><div></div><div></div><div></div><div></div><div></div><div></div><div></div><div></div><div></div><div></div><div></div><div></div><div></div><div></div><div></div><div></div><div></div><div></div><div></div><div></div><div></div><div></div><div></div><div></div><div></div><div></div><div></div><div></div><div></div><div></div><div></div><div></div><div></div><div></div><div></div><div></div><div></div><div></div><div></div><div></div><div></div><div></div><div></div><div></div><div></div><div></div><div></div><div></div><div></div><div></div><div></div><div></div><div></div><div></div><</div></div>			

Disclaimer:
This drawing has been prepared from a survey drawing that was based on rough survey measurements that were taken for OUTLINE DESIGN PURPOSES ONLY, which is NOT likely to be as precise as a full measured survey. As a result, no warranty as to be precision of the dimensions indicated or illustrated can be given. While this drawing can be used as a base drawing for construction and quotation purposes, due to the nature of the measurements on which it is based, it is VERY IMPORTANT that all dimensions are checked carefully before any work commences or any materials are ordered. If any discrepancies are noticed between this drawing and any other contract document then please contact us immediately.

Notes:

Site Boundary

Entrance

Existing wall to remain

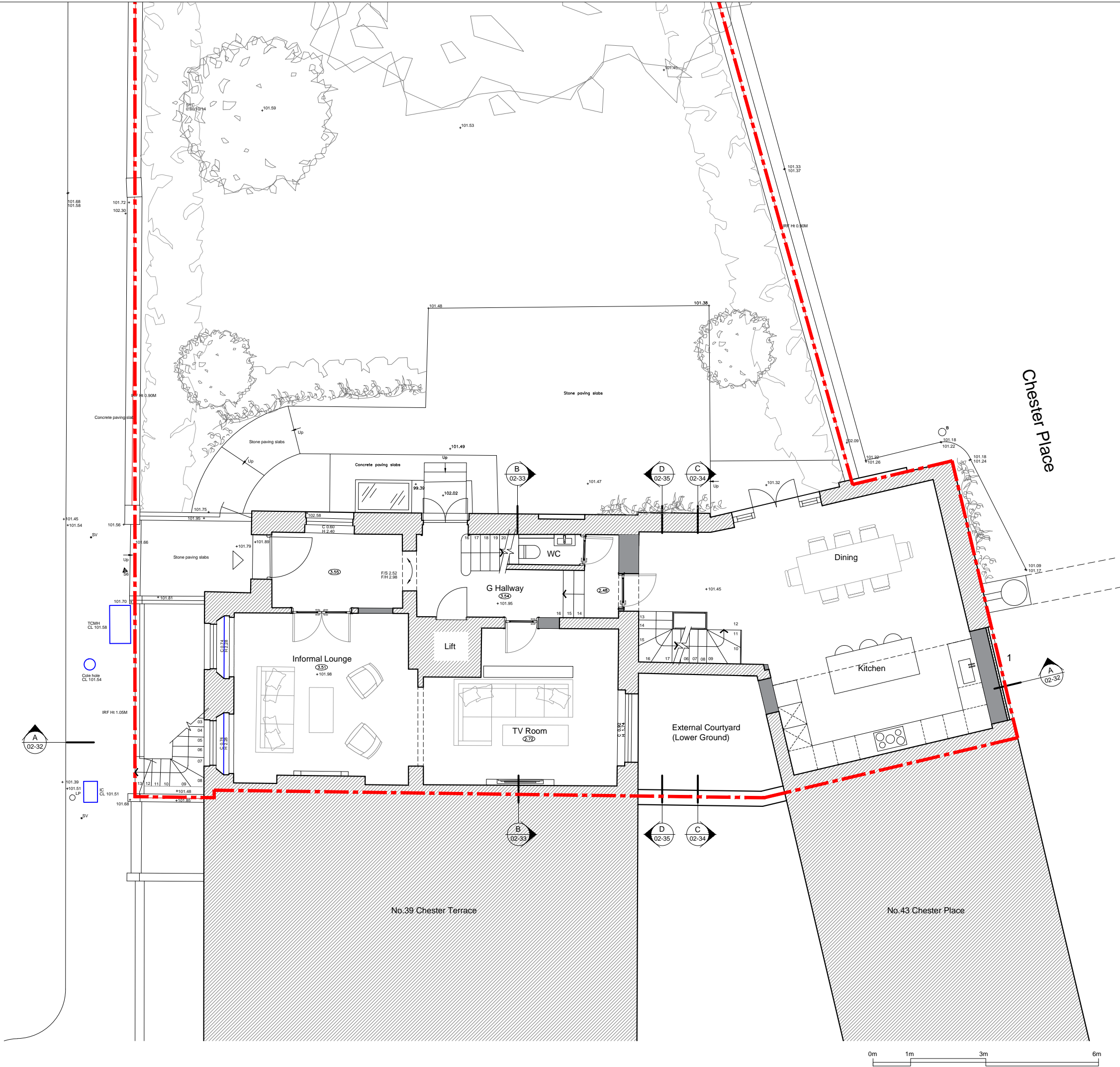
Proposed partitions

Material Key

- Conversion of garage to internal habitable space. Existing garage door to be replaced with replica. Hardwood doors painted to match existing, all detailing to match existing.

Chester Terrace

Chester Place




P1	17/02/16	DH	Setting Out
P0	08/02/16	DH	Setting Out
REV	DATE	DRAWN	DESCRIPTION
<div><div><div><div></div><div></div><div></div><div></div></div><div><div></div><div></div><div></div><div></div></div><div><div></div><div></div><div></div><div></div></div><div><div></div><div></div><div></div><div></div></div></div><div><div>concept</div><div>bespoke interiors</div></div><div><div>Concept Bespoke Interiors</div><div>33 Colville Road</div><div>London</div><div>W3 8BL</div></div></div>			
<div>Project</div> <div>40 Chester Terrace, London NW1 4ND</div>			
<div>Proposed Ground Floor GA</div>			
<div>Title</div>			
<div>Scale</div> <div>1:100 @ A3</div>			
<div>Job</div> <div>1518</div>	<div>Document Type</div> <div>DR</div>	<div>Series</div> <div>02</div>	<div>Number</div> <div>23</div>
<div></div>			<div>Revision</div> <div>P1</div>

Disclaimer:
This drawing has been prepared from a survey drawing that was based on rough survey measurements that were taken for OUTLINE DESIGN PURPOSES ONLY, which is NOT likely to be as precise as a full measured survey. As a result, no warranty as to be precision of the dimensions indicated or illustrated can be given. While this drawing can be used as a base drawing for construction and quotation purposes, due to the nature of the measurements on which it is based, it is VERY IMPORTANT that all dimensions are checked carefully before any work commences or any materials are ordered. If any discrepancies are noticed between this drawing and any other contract document then please contact us immediately.

Notes:

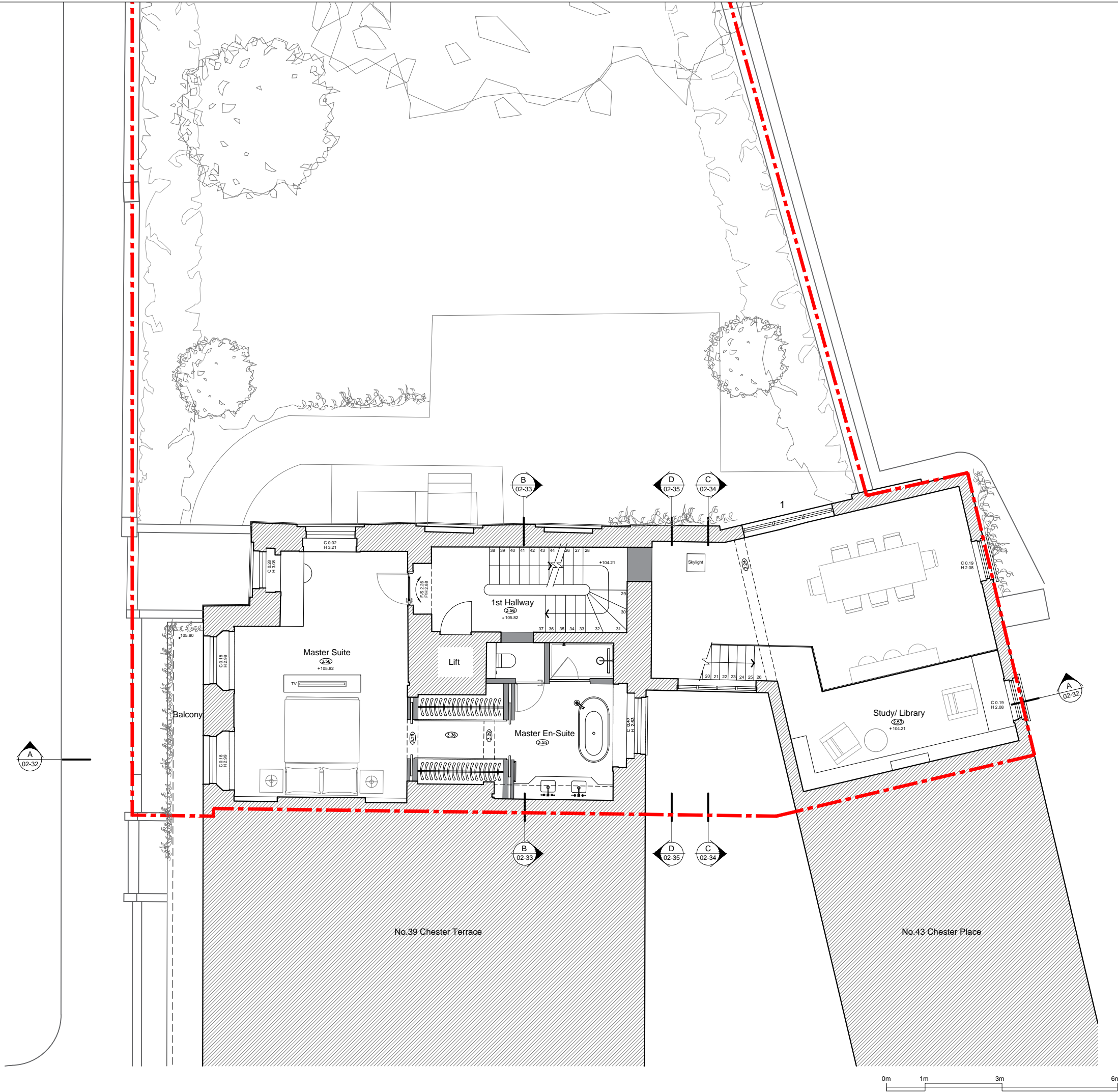
 Site Boundary

 Existing wall to remain

 Proposed partitions

Material Key

- Proposed window with etched glass, timber framed conservation style. Frames to be painted white.





P1	17/02/16	DH	Setting Out
P0	08/02/16	DH	Setting Out
REV	DATE	DRAWN	DESCRIPTION
<div><div><div></div><div></div><div></div><div></div></div><div>Concept Bespoke Interiors 33 Colville Road London W3 8BL</div></div> <div><div>concept</div><div>bespoke interiors</div></div>			
Project 40 Chester Terrace, London NW1 4ND			
Title Proposed First Floor GA			
Scale 1:100 @ A3			
Job 1518	Document Type DR	Series 02	Number 24
		Revision P1	

Disclaimer:
This drawing has been prepared from a survey drawing that was based on rough survey measurements that were taken for OUTLINE DESIGN PURPOSES ONLY, which is NOT likely to be as precise as a full measured survey. As a result, no warranty as to be precision of the dimensions indicated or illustrated can be given. While this drawing can be used as a base drawing for construction and quotation purposes, due to the nature of the measurements on which it is based, it is VERY IMPORTANT that all dimensions are checked carefully before any work commences or any materials are ordered. If any discrepancies are noticed between this drawing and any other contract document then please contact us immediately.

Notes:

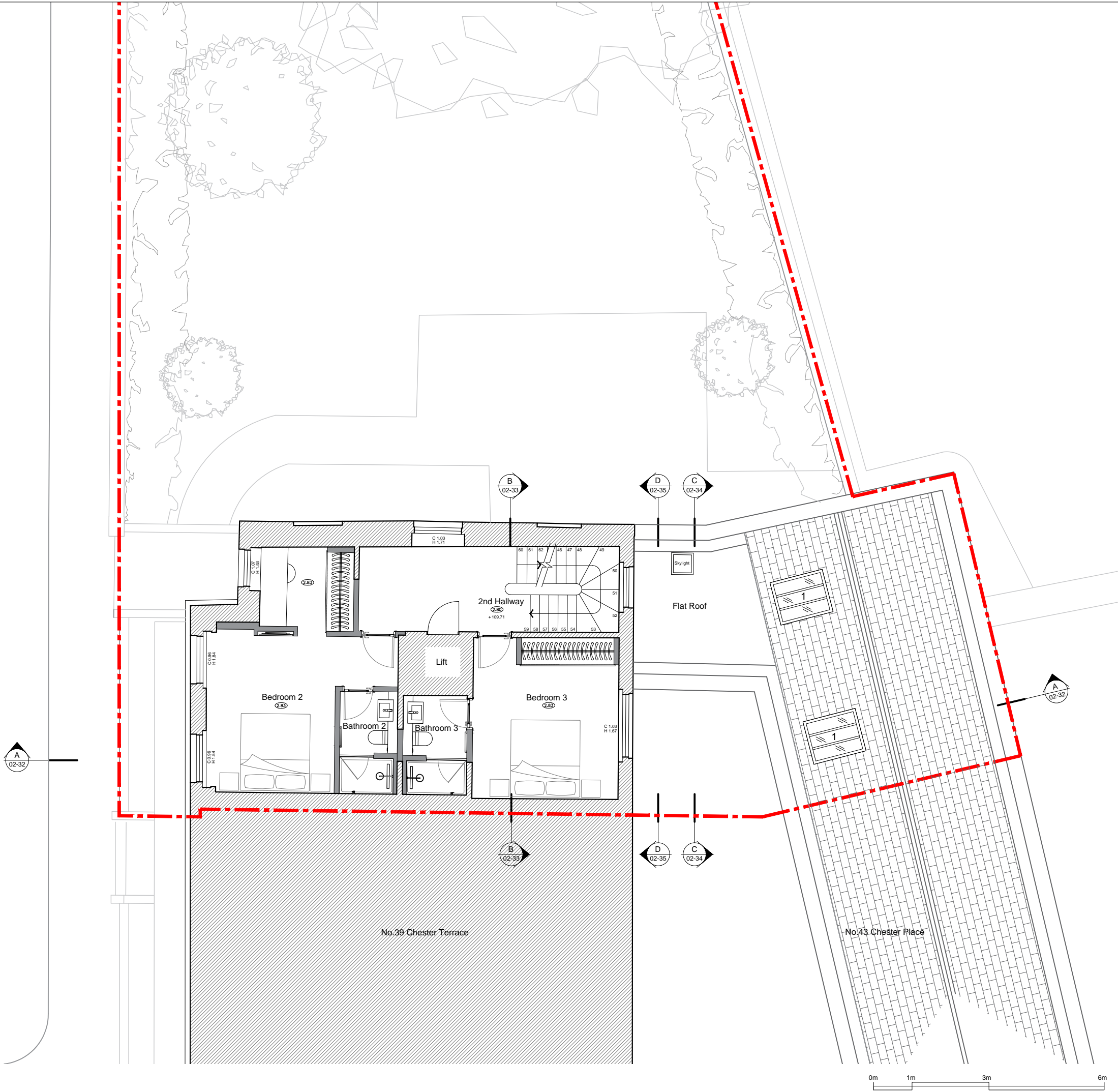
 Site Boundary

 Existing wall to remain

 Proposed partitions

Material Key

1. Conservation rooflights with etched glass, fixed shut.



P1	17/02/16	DH	Setting Out										
P0	08/02/16	DH	Setting Out										
REV	DATE	DRAWN	DESCRIPTION										
<div><div><div><div></div><div></div><div></div><div></div></div><div><div>Concept Bespoke Interiors</div><div>33 Colville Road</div><div>London</div><div>W3 8BL</div></div></div><div><div>concept</div><div>bespoke interiors</div></div></div> <div>Project 40 Chester Terrace, London NW1 4ND</div> <div>Proposed Second Floor GA</div> <div>Title</div> <div>Scale 1:100 @ A3</div> <div><table><tr><td>Job</td><td>Document Type</td><td>Series</td><td>Number</td><td>Revision</td></tr><tr><td>1518</td><td>DR</td><td>02</td><td>25</td><td>P1</td></tr></table></div>				Job	Document Type	Series	Number	Revision	1518	DR	02	25	P1
Job	Document Type	Series	Number	Revision									
1518	DR	02	25	P1									

Disclaimer:
This drawing has been prepared from a survey drawing that was based on rough survey measurements that were taken for OUTLINE DESIGN PURPOSES ONLY, which is NOT likely to be as precise as a full measured survey. As a result, no warranty as to be precision of the dimensions indicated or illustrated can be given. While this drawing can be used as a base drawing for construction and quotation purposes, due to the nature of the measurements on which it is based, it is VERY IMPORTANT that all dimensions are checked carefully before any work commences or any materials are ordered. If any discrepancies are noticed between this drawing and any other contract document then please contact us immediately.

Notes:

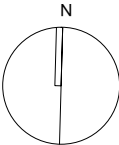
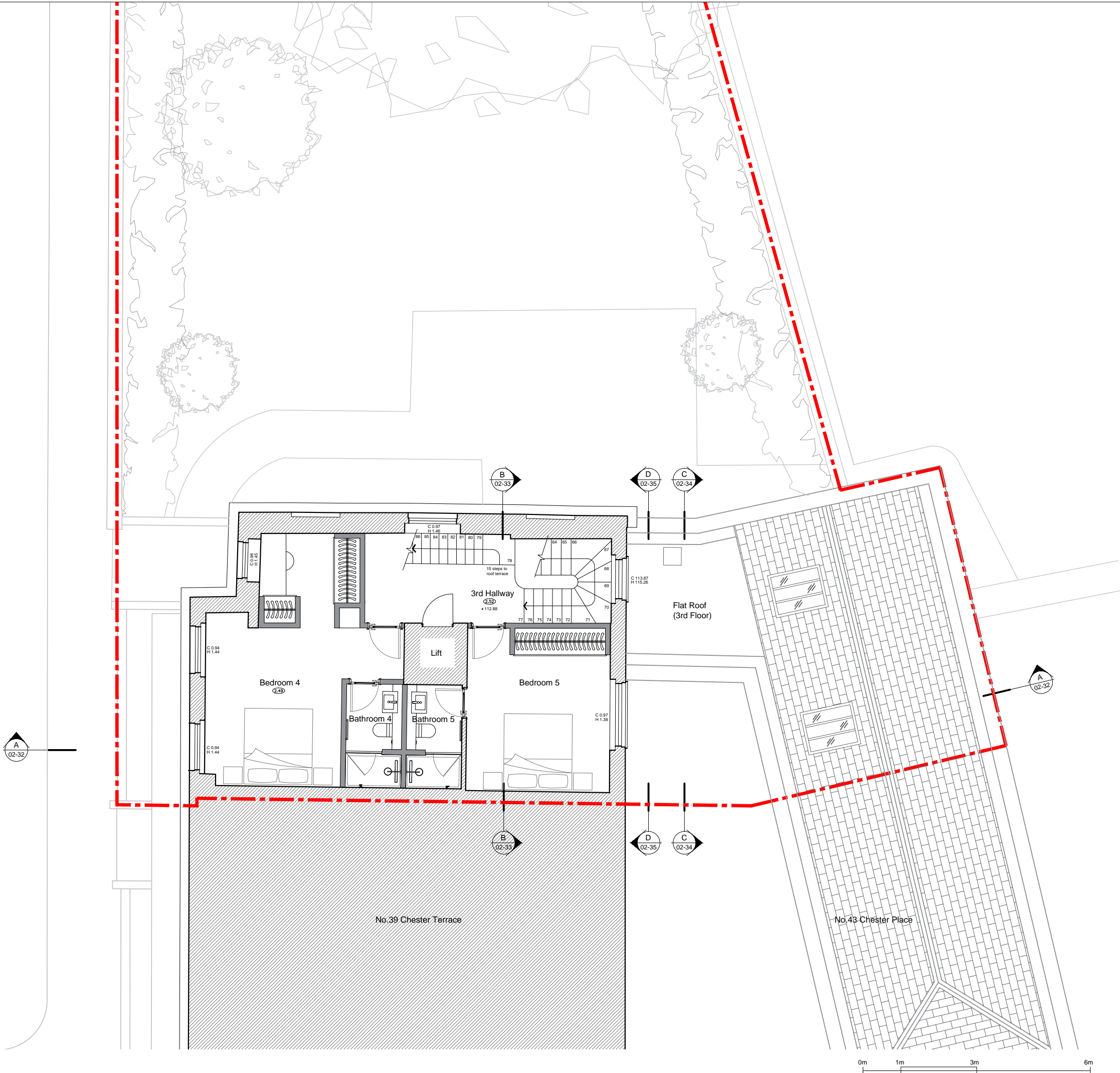
Site Boundary



Existing wall to remain



Proposed partitions

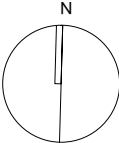



P1	17/02/16	DH	Setting Out
P0	08/02/16	DH	Setting Out
REV	DATE	DRAWN	DESCRIPTION
<div><div></div><div></div><div></div><div></div></div> <div>Concept Bespoke Interiors 33 Colville Road London W3 8BL</div> <div>concept bespoke interiors</div>			
Project 40 Chester Terrace, London NW1 4ND			
Title Proposed Third Floor GA			
Scale 1:100 @ A3			
Job 1518	Document Type DR	Series 02	Number 26
		Revision P1	

Notes:

Material Key

1. Sunken roof terrace.
2. Rooflight access hatch.



P1 P0 REV	17/02/16 08/02/16 DATE	DH DH DRAWN	Setting Out Setting Out DESCRIPTION
 <p>Concept Bespoke Interiors 33 Colville Road London W3 8BL</p> <p>concept bespoke interiors</p>			
<p>Project 40 Chester Terrace, London NW1 4ND</p>			
<p>Proposed Roof Plan</p>			
<p>Title</p>			
<p>Scale 1:100 @ A3</p>			
Job 1518	Document Type DR	Series 02	Number 27
			Revision P1

Material Key

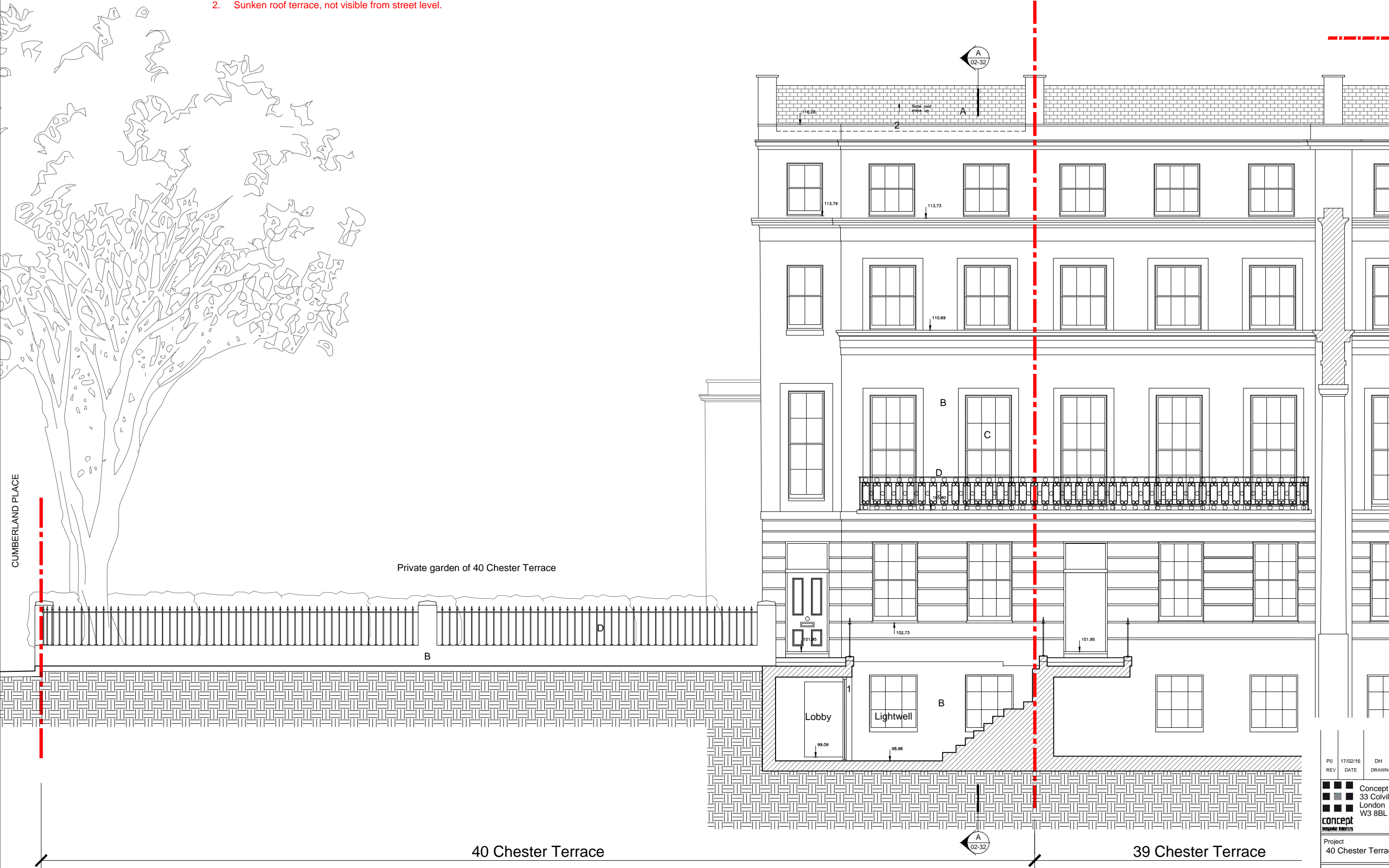
- A. Slate roof.
B. Painted masonry.
C. Timber sash & case windows.
D. Black metal railings.

1. New heritage style glass door.
2. Sunken roof terrace, not visible from street level.

Disclaimer:
This drawing has been prepared from a survey drawing that was based on rough survey measurements that were taken for OUTLINE DESIGN PURPOSES ONLY, which is NOT likely to be as precise as a full measured survey. As a result, no warranty as to the precision of the dimensions indicated or illustrated can be given. While this drawing can be used as a base drawing for construction and quotation purposes, due to the nature of the measurements on which it is based, it is VERY IMPORTANT that all dimensions are checked carefully before any work commences or any materials are ordered. If any discrepancies are noticed between this drawing and any other contract document then please contact us immediately.

Notes:

Site Boundary



P0	17/02/16	DH	Setting Out
REV	DATE	DRAWN	DESCRIPTION
<div><div><div></div><div></div><div></div><div></div></div><div>Concept Bespoke Interiors 33 Colville Road London W3 8BL</div></div> <div><div>concept</div><div>bespoke interiors</div></div>			
Project 40 Chester Terrace, London NW1 4ND			
Title Proposed West Elevation			
Scale 1:100 @ A3			
Job 1518	Document Type DR	Series 02	Number 28
		Revision P0	

Disclaimer:
This drawing has been prepared from a survey drawing that was based on rough survey measurements that were taken for OUTLINE DESIGN PURPOSES ONLY, which is NOT likely to be as precise as a full measured survey. As a result, no warranty as to be precision of the dimensions indicated or illustrated can be given. While this drawing can be used as a base drawing for construction and quotation purposes, due to the nature of the measurements on which it is based, it is VERY IMPORTANT that all dimensions are checked carefully before any work commences or any materials are ordered. If any discrepancies are noticed between this drawing and any other contract document then please contact us immediately.

Notes:

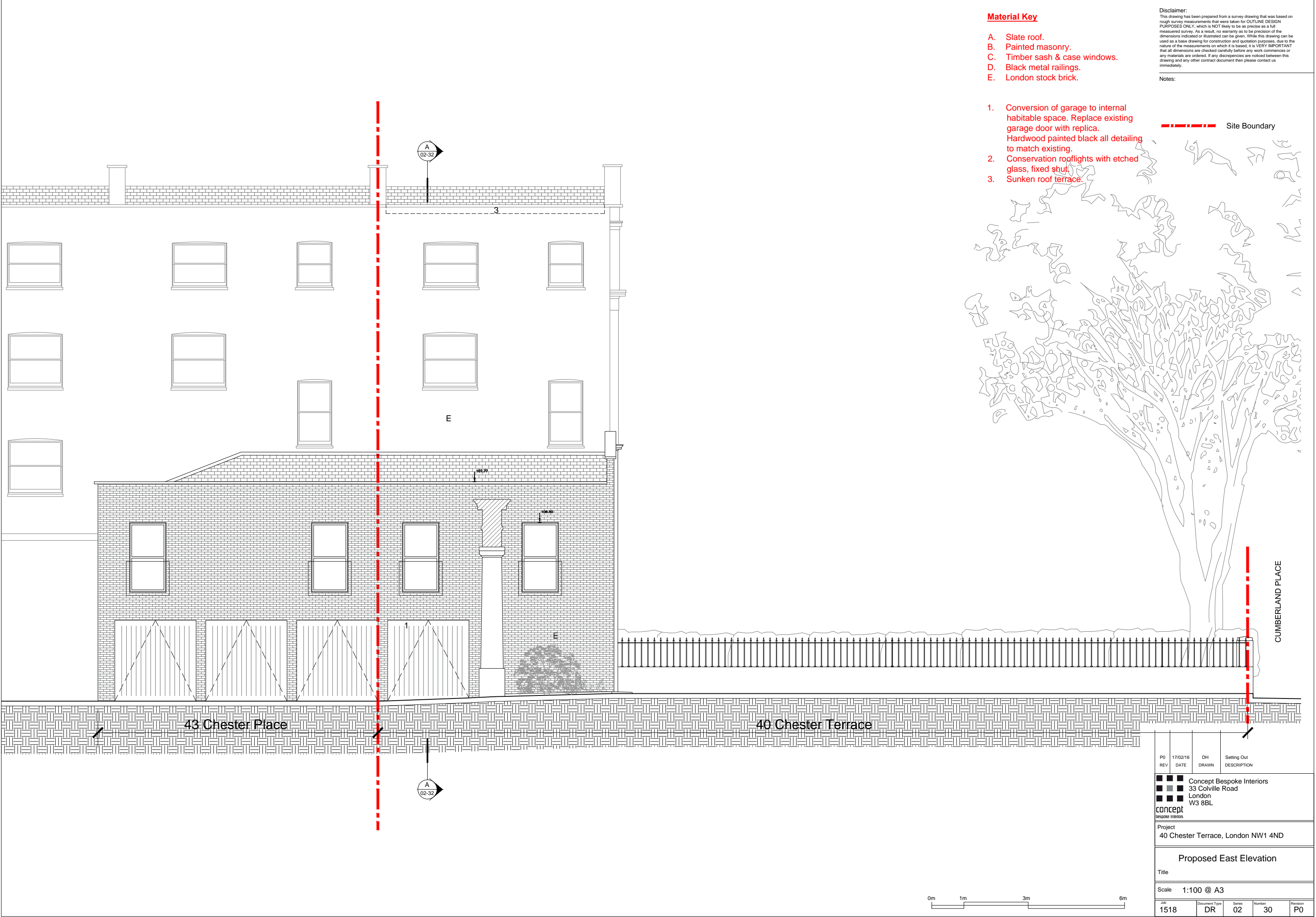
Site Boundary

Material Key

- A. Slate roof.
- B. Painted masonry.
- C. Timber sash & case windows.
- D. Black metal railings.
- E. London stock brick.



P0	17/02/16	DH	Setting Out
REV	DATE	DRAWN	DESCRIPTION
<div><div><div></div><div></div><div></div><div></div></div><div>Concept Bespoke Interiors 33 Colville Road London W3 8BL</div></div> <div><div>concept</div><div>bespoke interiors</div></div>			
Project 40 Chester Terrace, London NW1 4ND			
Proposed North Elevation			
Title			
Scale 1:100 @ A3			
Job	Document Type	Series	Number
1518	DR	02	29
			Revision
			P0



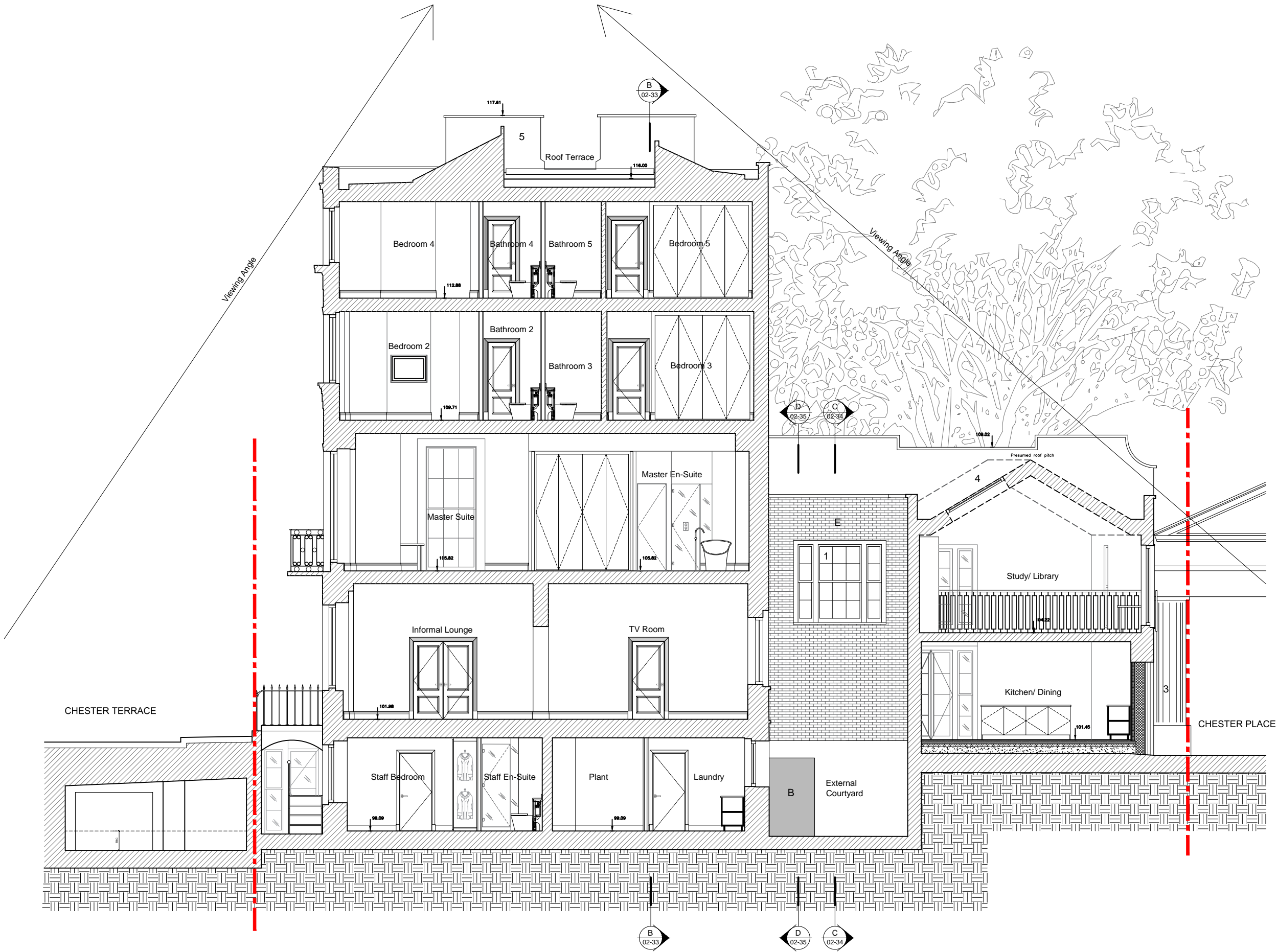
Disclaimer:
This drawing has been prepared from a survey drawing that was based on rough survey measurements that were taken for OUTLINE DESIGN PURPOSES ONLY, which is NOT likely to be as precise as a full measured survey. As a result, no warranty as to the precision of the dimensions indicated or illustrated can be given. While this drawing can be used as a base drawing for construction and quotation purposes, due to the nature of the measurements on which it is based, it is VERY IMPORTANT that all dimensions are checked carefully before any work commences or any materials are ordered. If any discrepancies are noticed between this drawing and any other contract document then please contact us immediately.

Notes:

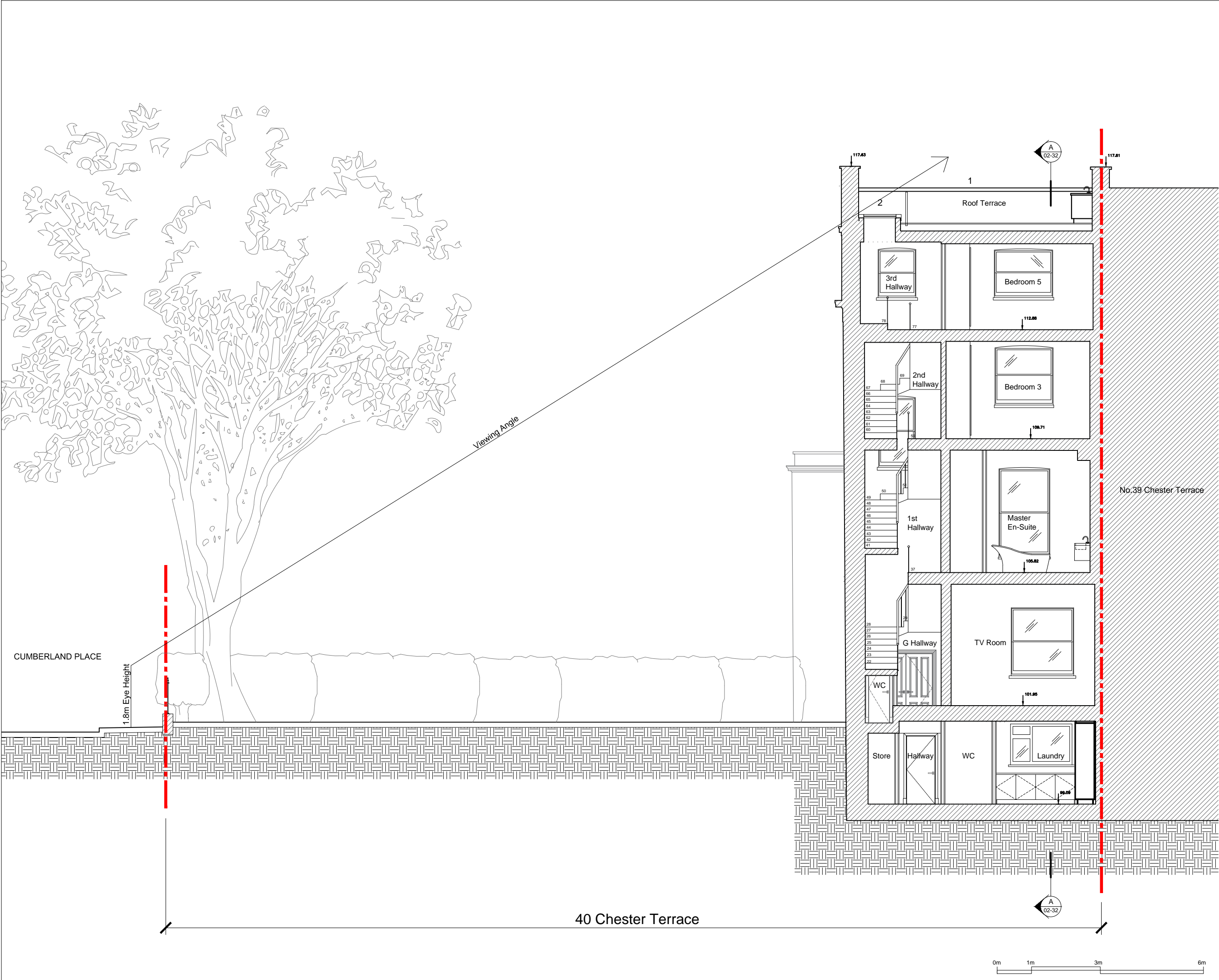
Site Boundary

Material Key

- B. Painted masonry.
E. London stock brick.
1. Proposed window with etched glass, timber framed conservation style. Frames to be painted white.
2. -
3. Conversion of garage to internal habitable space. Retain existing garage door.
4. Conservation rooflights with etched glass, fixed shut.
5. Sunken roof terrace.



P0 REV	xx/02/16 DATE	DH DRAWN	Setting Out DESCRIPTION
<div><div><div></div><div></div><div></div><div></div><div></div><div></div></div><div>Concept Bespoke Interiors 33 Colville Road London W3 8BL</div></div>			
concept bespoke interiors			
Project 40 Chester Terrace, London NW1 4ND			
Proposed Section A-A			
Title			
Scale 1:100 @ A3			
Job 1518	Document Type DR	Series 02	Number 32
			Revision P0



Disclaimer:
This drawing has been prepared from a survey drawing that was based on rough survey measurements that were taken for OUTLINE DESIGN PURPOSES ONLY, which is NOT likely to be as precise as a full measured survey. As a result, no warranty as to be precision of the dimensions indicated or illustrated can be given. While this drawing can be used as a base drawing for construction and quotation purposes, due to the nature of the measurements on which it is based, it is VERY IMPORTANT that all dimensions are checked carefully before any work commences or any materials are ordered. If any discrepancies are noticed between this drawing and any other contract document then please contact us immediately.

Notes:

Site Boundary

Material Key

- 1. Sunken roof terrace.
- 2. Rooflight access hatch.

P0	xx/02/16	DH	Setting Out
REV	DATE	DRAWN	DESCRIPTION
<div><div><div></div><div></div><div></div><div></div></div><div>Concept Bespoke Interiors 33 Colville Road London W3 8BL</div></div> <div><div>concept</div><div>bespoke interiors</div></div>			
Project 40 Chester Terrace, London NW1 4ND			
Proposed Section B-B			
Title			
Scale 1:100 @ A3			
Job	Document Type	Series	Number
1518	DR	02	33
		Revision	P0

Disclaimer:
This drawing has been prepared from a survey drawing that was based on rough survey measurements that were taken for OUTLINE DESIGN PURPOSES ONLY, which is NOT likely to be as precise as a full measured survey. As a result, no warranty as to precision of the dimensions indicated or illustrated can be given. While this drawing can be used as a base drawing for construction and quotation purposes, due to the nature of the measurements on which it is based, it is VERY IMPORTANT that all dimensions are checked carefully before any work commences or any materials are ordered. If any discrepancies are noticed between this drawing and any other contract document then please contact us immediately.

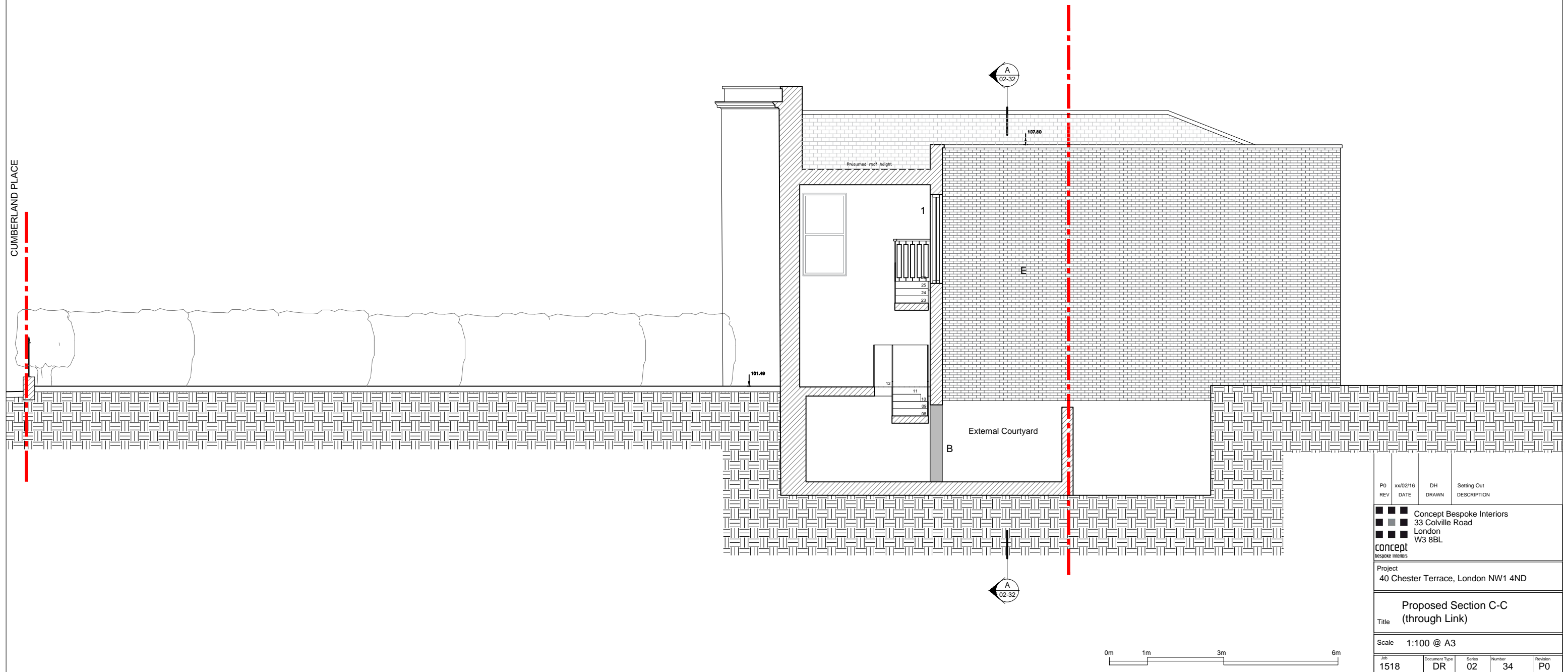
Notes:

Abstract

Material Key

- A. Slate roof.
- B. Painted masonry.
- C. Timber sash & case windows.
- D. Black metal railings.
- E. London stock brick.

1. New window with etched glass, timber framed conservation style. Frames to be painted white.



Disclaimer:
This drawing has been prepared from a survey drawing that was based on rough survey measurements that were taken for OUTLINE DESIGN PURPOSES ONLY, which is NOT likely to be as precise as a full measured survey. As a result, no warranty as to the precision of the dimensions indicated or illustrated can be given. While this drawing can be used as a base drawing for construction and quotation purposes, due to the nature of the measurements on which it is based, it is VERY IMPORTANT that all dimensions are checked carefully before any work commences or any materials are ordered. If any discrepancies are noticed between this drawing and any other contract document then please contact us immediately.

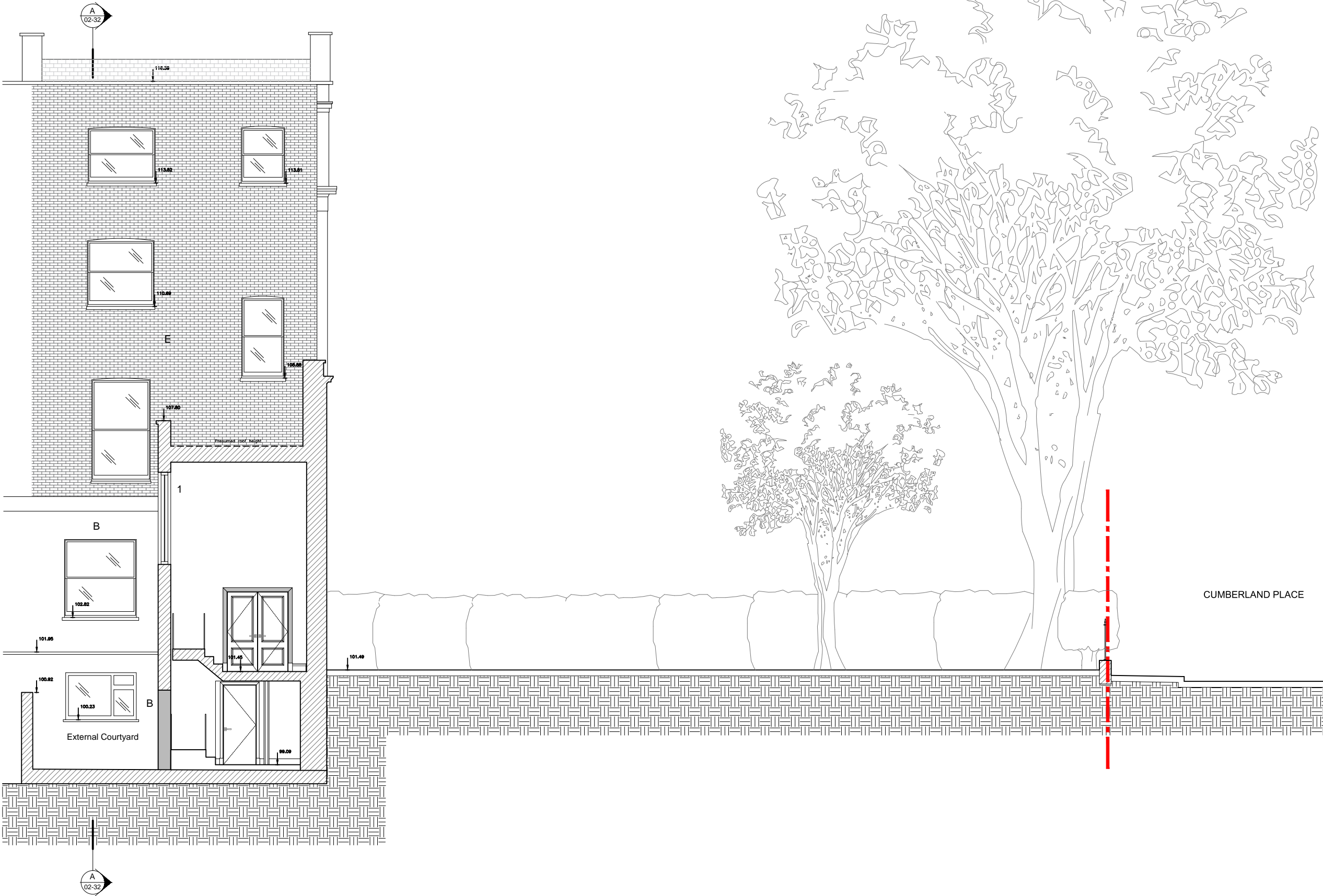
Notes:

Site Boundary

Material Key

- A. Slate roof.
B. Painted masonry.
C. Timber sash & case windows.
D. Black metal railings.
E. London stock brick.

1. New window with etched glass, timber framed conservation style. Frames to be painted white.



P0	xx/02/16	DH	Setting Out
REV	DATE	DRAWN	DESCRIPTION
■ ■ ■	Concept Bespoke Interiors		
■ ■ ■	33 Colville Road		
■ ■ ■	London		
■ ■ ■	W3 8BL		
concept bespoke interiors			
Project 40 Chester Terrace, London NW1 4ND			
Title Proposed Section D-D (through Link)			
Scale 1:100 @ A3			
Job 1518	Document Type DR	Series 02	Number 35
			Revision P0