

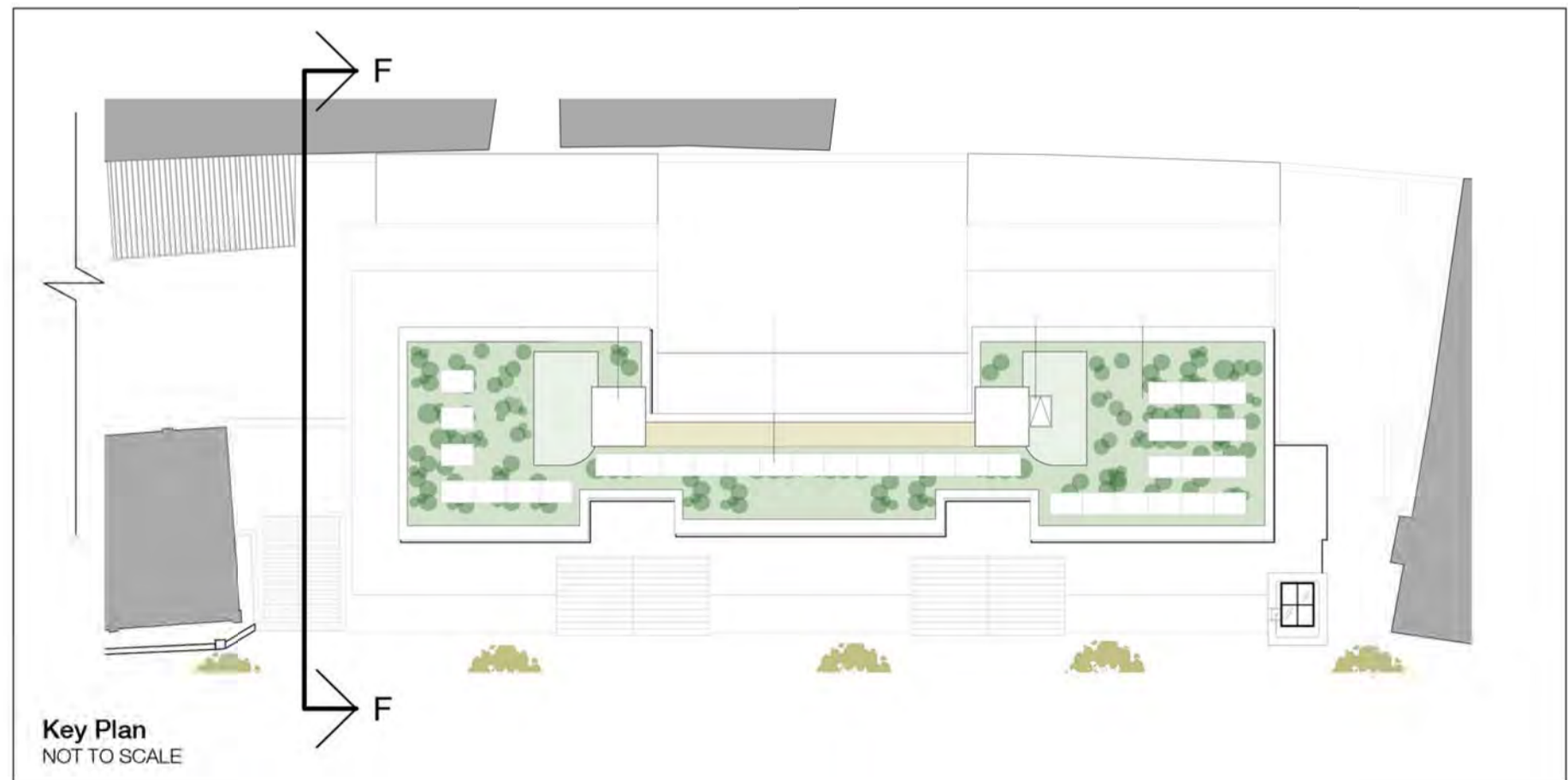


NOTES:

- 1 Lift overrun to be clad in copper to match upper floor facades
- 2 Fourth and Fifth floors to be clad in treated copper / bronze with traditional standing seam details
- 3 Flank elevations windows at 4th & 5th floor to be double or triple glazed with anodised aluminium frames to complement copper and back painted glass spandrel panels above FCL
- 4 Treated Aluminium cap flashings to parapets to match window frames
- 5 New facades to 3rd (and 4th where shown) floor level to be clad with brickwork
- 6 Windows to be glazed with coloured anodised aluminium frames to complement copper
- 7 Spandrel panels with treated copper finish adjacent to windows
- 8 Cantilevered protruding balconies
- 9 Perforated metal balustrades to 1100mm above FFL with treated copper / bronze finish
- 10 1200mm high walls between gardens with 600mm trellis above
- 11 Structure of gable roofs to be rebuilt with coverings (clay roof tiles) to match the existing
- 12 Parapet level raised with brickwork & copings to match existing to give existing facade dominance in scale
- 13 Retained facade to be refurbished with brickwork and stonework made good or replaced on a like-for-like basis and elevation repointed. Additional insulation to be added to inner face of existing wall
- 14 Windows to retained facade to be replaced with timber sash double glazed windows to match existing
- 15 Chimney to be retained and restored as required
- 16 Drainpipe and hopper to be replaced with new cast iron to match heritage of the building
- 17 Obscure glazing to bottom pains of windows at 2nd floor level where windows to Aldwych building are opposite
- 18 Apex of roof and parapet line shown dashed
- 19 Biodiversity roof to rear flat roof of little house
- 20 Brick flank wall raised and extended with brickwork to match existing to appear as party wall mansard extension from corner view

Amendments:

Profile of consented scheme



This drawing replaces and supersedes consented PDP drawing no. 1588(PL)215 rev.P3

Disclaimer  
Do not scale from this drawing.  
Check all dimensions on site before fabrication or setting out.  
This document is copyright and may not be reproduced without permission of the owner.

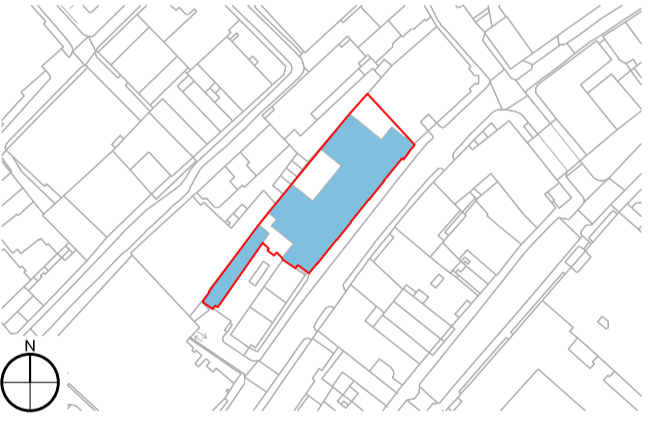
Notes

Key

00	Issue for NMA	April 2016	RPP	RPP
Rev	Notes	Date	Dwn	Iss

Consultants  
Structural Engineer: AKT II  
M&E Engineer: Scotch & Partners  
Planning: DP9  
Daylight - Sunlight/ROL: 2 Point Surveyors  
Cost: Core 5  
Building Control: HCD  
Fire: JGA

Key / Location



Robin Partington & Partners

Castlewood  
85 New Oxford Street  
London  
WC1A 1DG  
+44 20 7419 3500  
mail@rpplondon.com  
www.rpplondon.com

Client  
**Londonewcastle**  
The Courtyard Building  
17 Evelyn Yard  
London W1T 1AU

Project <b>Parker House</b>			
Drawing Title South West Flank Section Elevation F - F			
Scale	Drawn By	Issued By	
1:100 @ A1	1:200 @ A3	RPP	RPP
Project No.	Drawing No.	Revision	
16002	A_PL_205	00	