



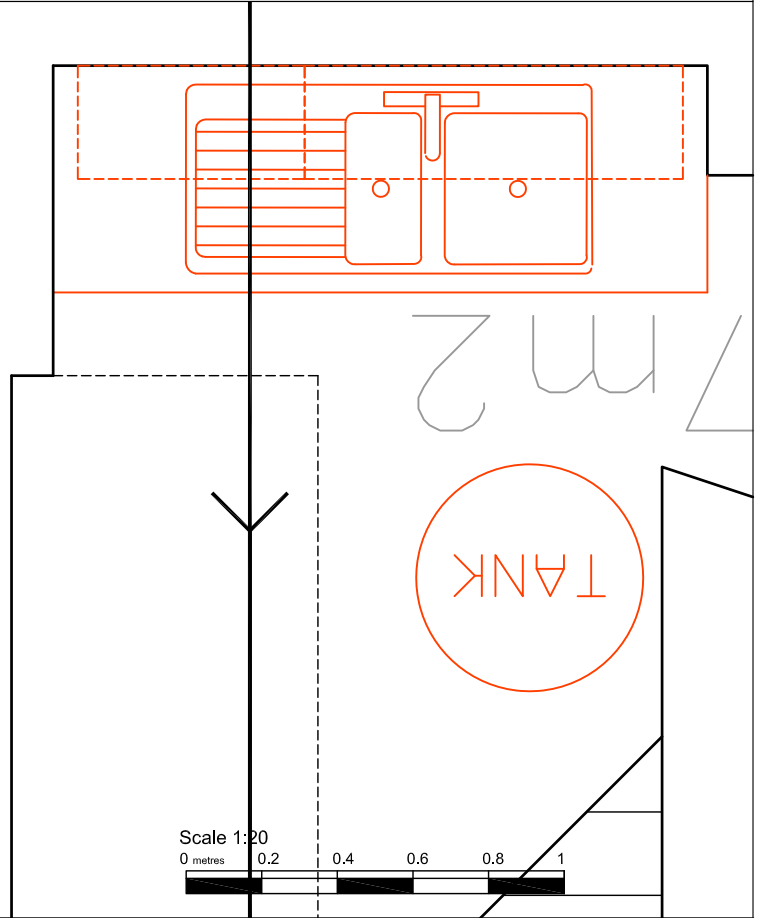
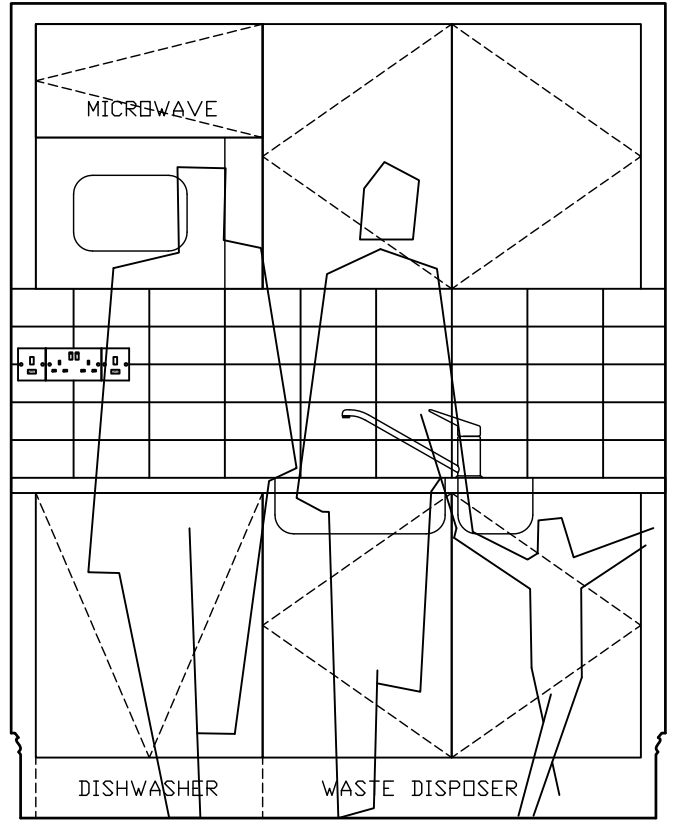
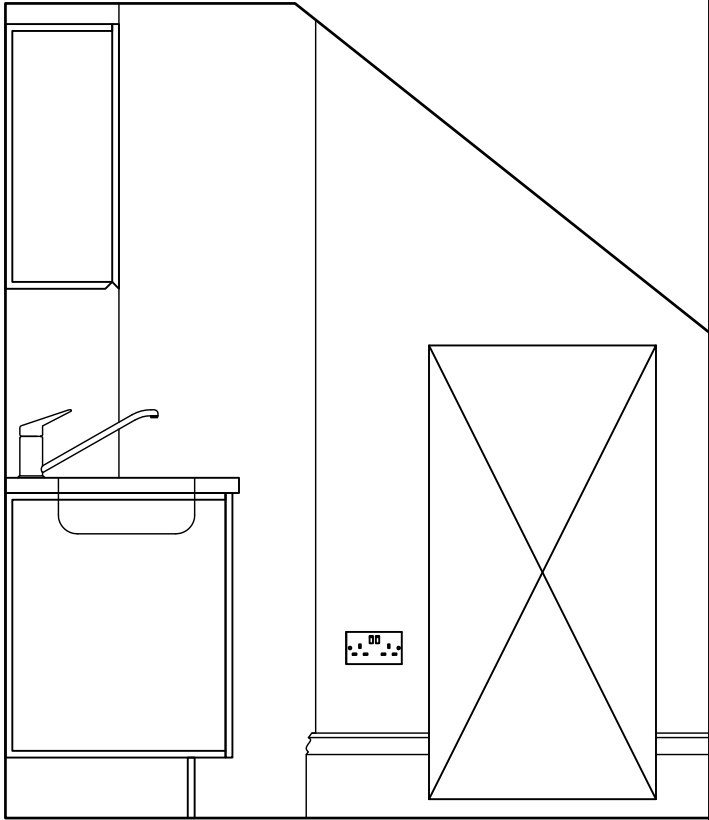
Gregory Munson RIBA . architect

REVISIONS
A 16.10.15

Detail drawings
see Schedule of Works
Remove modern boiler room

30 Museum Street, WC1A 1LH
for P Athill Esq.

SCALE	DATE	DWG.No	REV
1:20@A3	25.09.15	B1	A



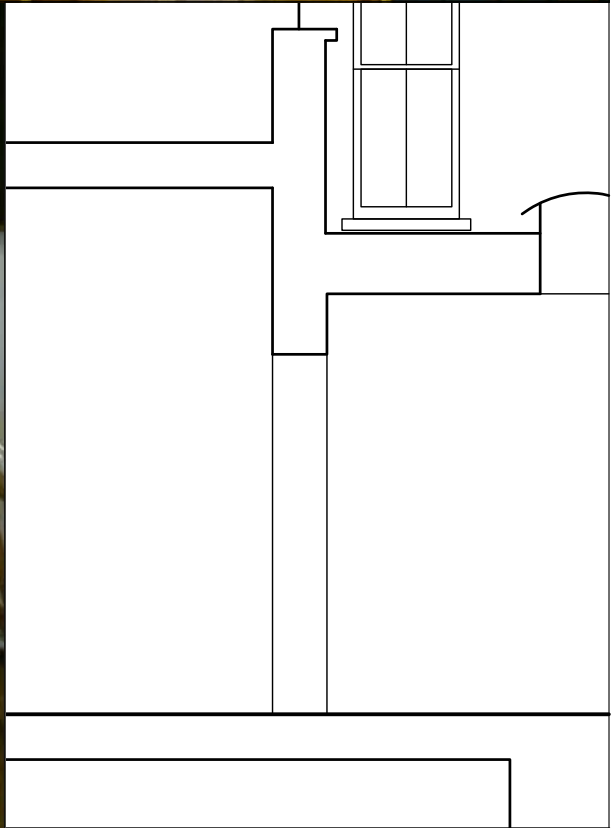
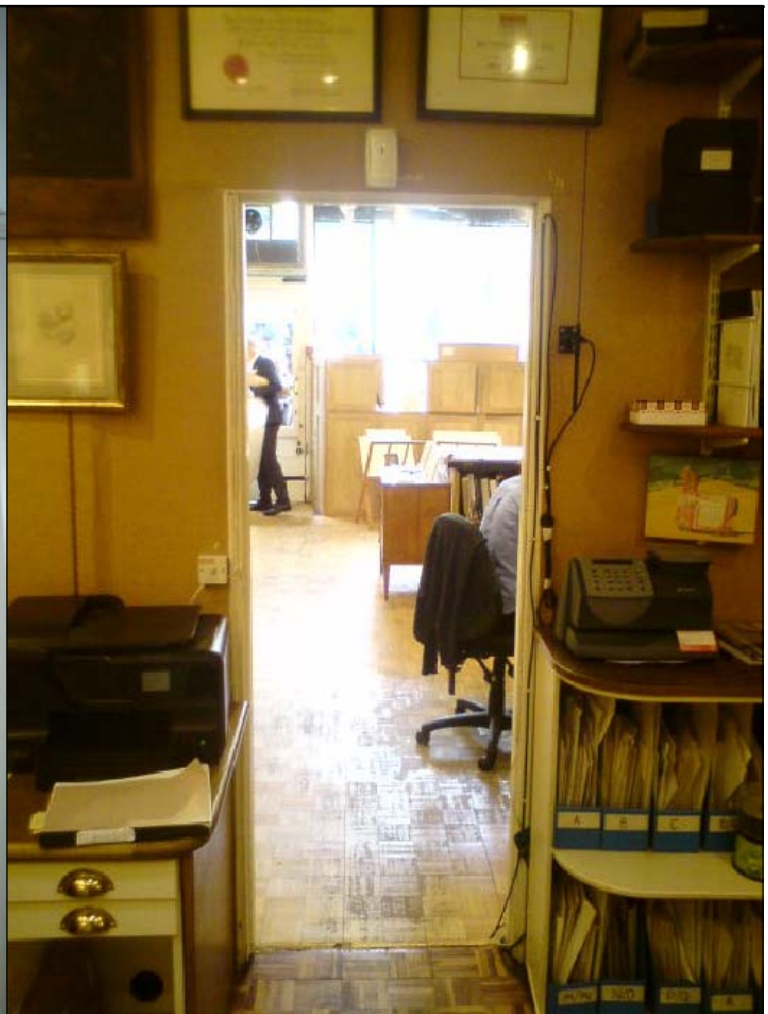
Gregory Munson RIBA . architect

REVISIONS
A 16.10.15

Detail drawings
see Schedule of Works
Basement Teapoint

30 Museum Street, WC1A 1LH
for P Athill Esq.

SCALE	DATE	DWG.No	REV
1:20@A3	25.09.15	B2	A



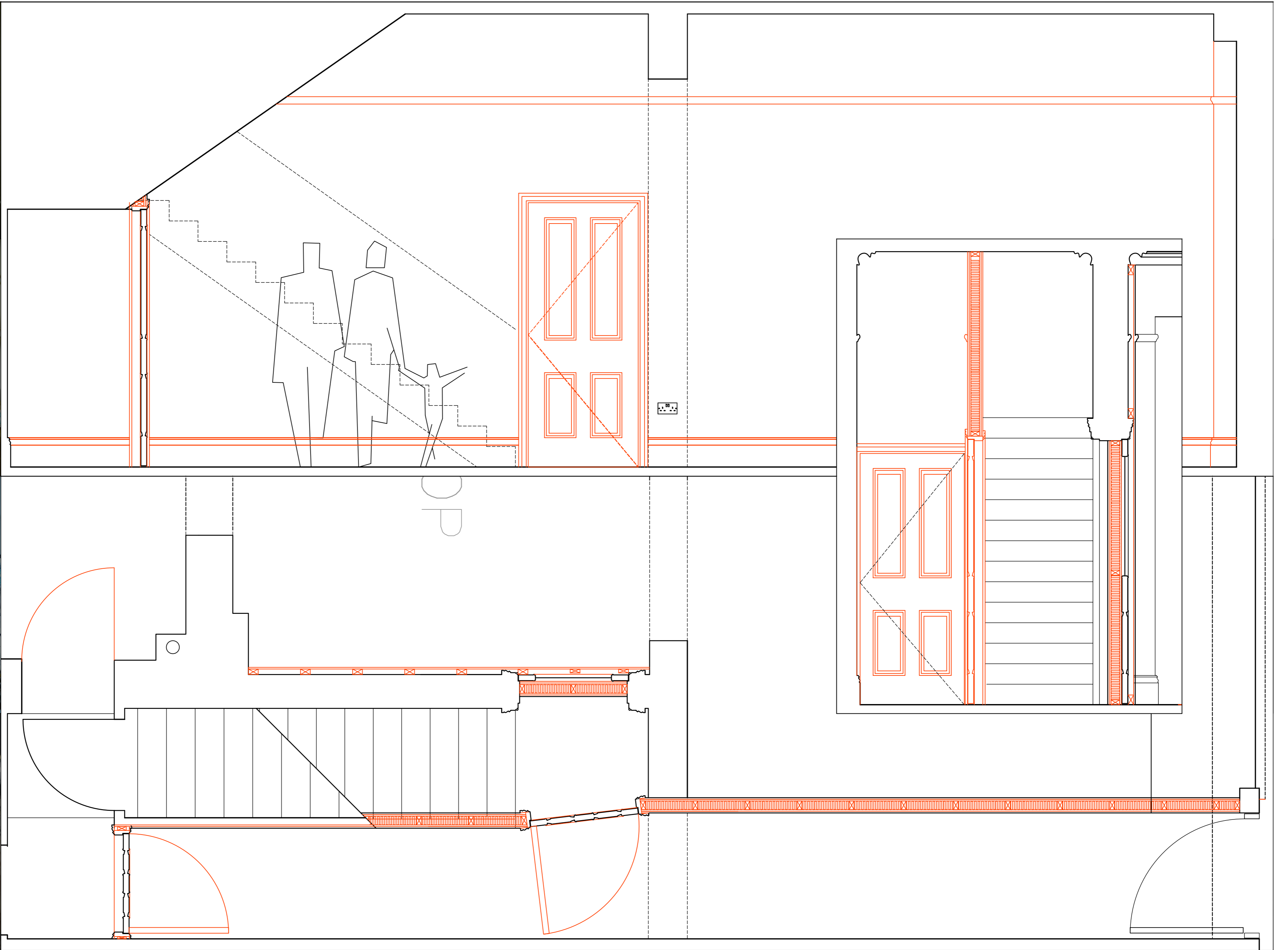
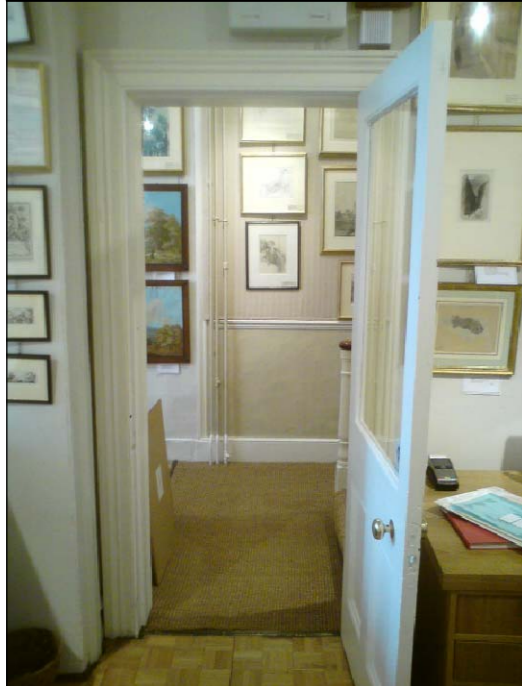
Gregory Munson RIBA . architect

REVISIONS
A 16.10.15

Detail drawings
see Schedule of Works
Remove modern doorway

30 Museum Street, WC1A 1LH
for P Athill Esq.

SCALE	DATE	DWG.No	REV
1:20@A3	25.09.15	G1	A



Gregory Munson RIBA . architect

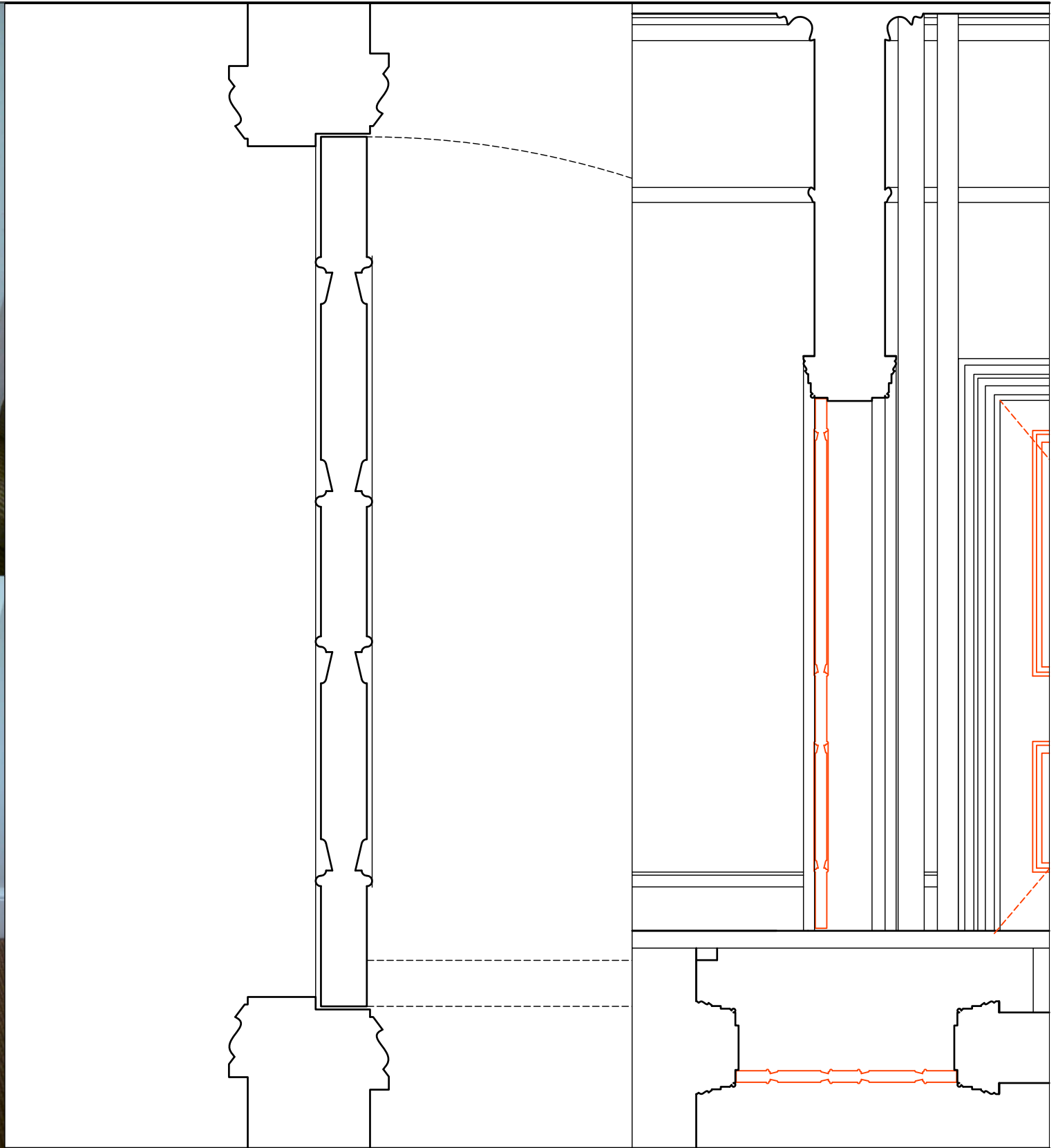
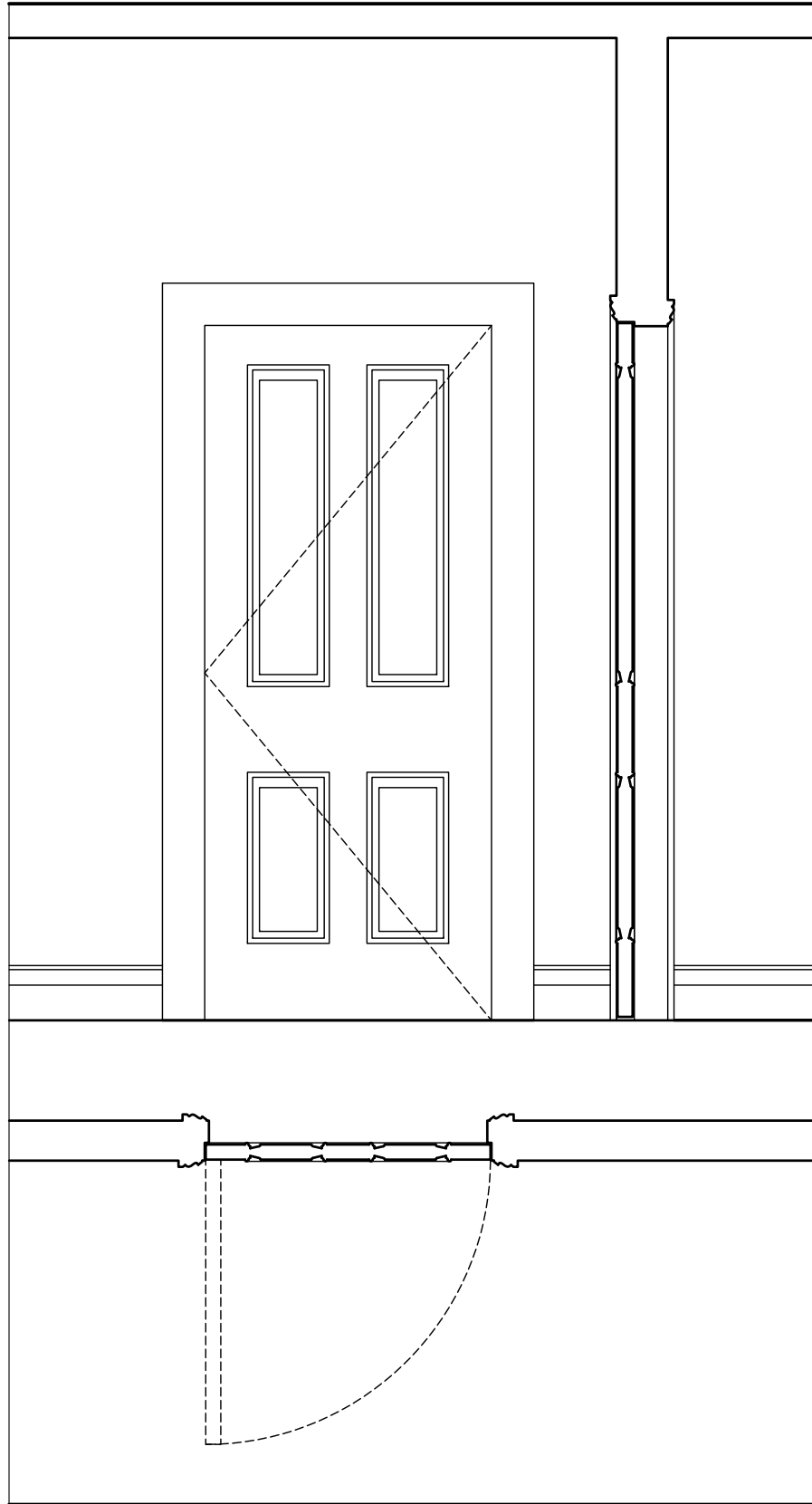
Scale 1:20
0 metres 0.2 0.4 0.6 0.8 1

REVISIONS
A 16.10.15
B 23.02.16

Detail drawings
see Schedule of Works
Entrance works

30 Museum Street, WC1A 1LH
for P Athill Esq.

SCALE	DATE	DWG.No	REV
1:20@A2	23.02.16	G2,G3,G4	B



Gregory Munson RIBA . architect

Scale 1:20
0 metres 0.2 0.4 0.6 0.8 1

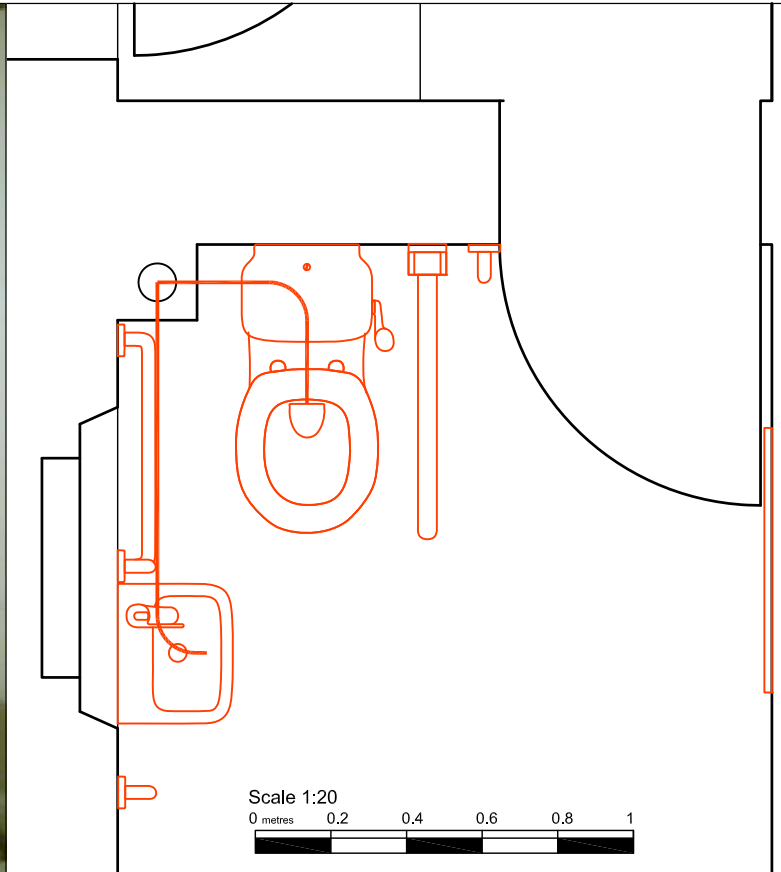
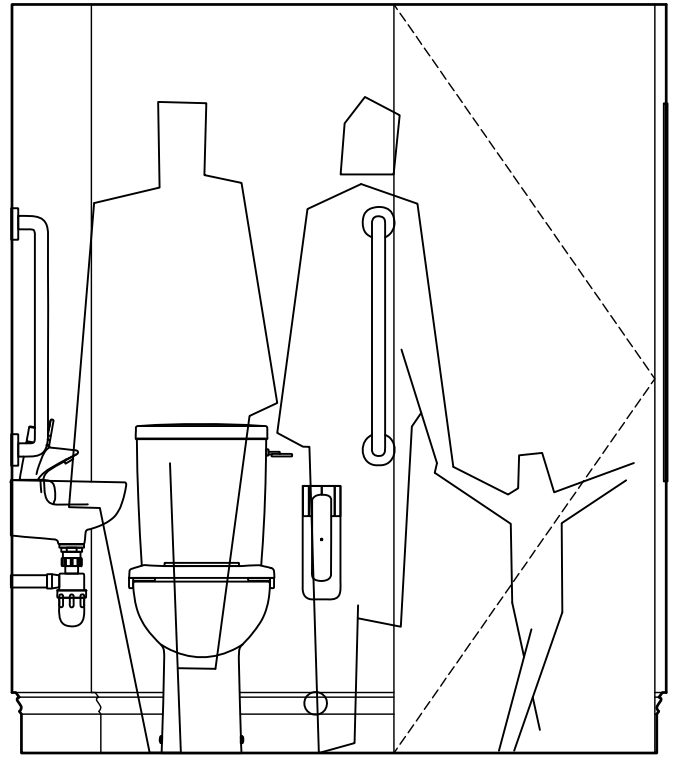
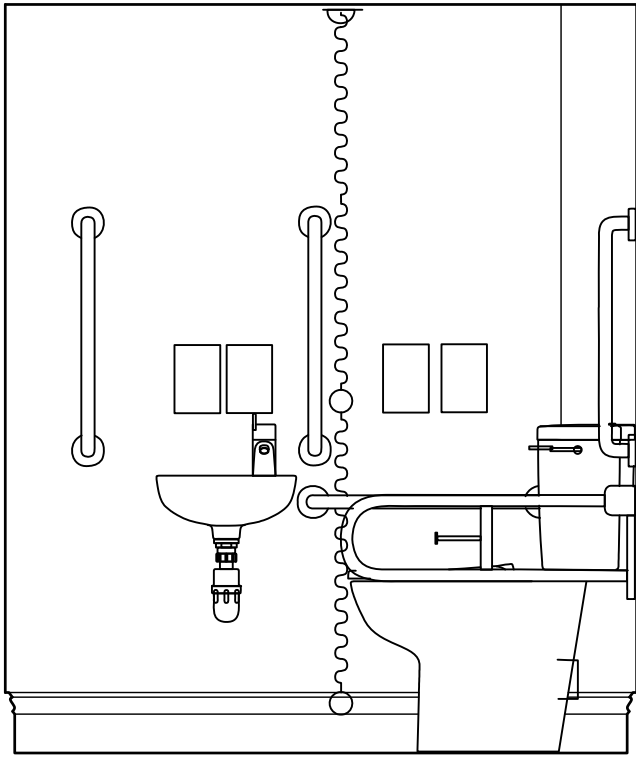
REVISIONS

A 16.10.15
B 20.12.15

Detail drawings
see Schedule of Works
Internal doors

30 Museum Street, WC1A 1LH
for P Athill Esq.

SCALE	DATE	DWG.No	REV
1:20@A3	25.09.15	G5,F4,S2,S3	B



Gregory Munson RIBA . architect

REVISIONS A 16.10.15	Detail drawings see Schedule of Works Shop toilet	30 Museum Street, WC1A 1LH for P Athill Esq.		
		SCALE 1:20@A3	DATE 25.09.15	DWG.No G6

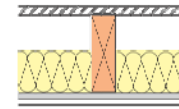


BS

Table 2b - Indirect fix plasterboard to new or existing solid timber joist floors
Solutions to satisfy the requirements of BS 476: Part 21: 1987

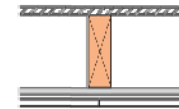


1



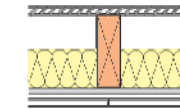
23mm thick (softwood or chipboard) floor boarding over minimum 188mm x 32mm timber joists at 600mm centres. Gyprock RB2 SureFix Bars fixed to underside of joists at 480mm centres and at perimeter with ceiling linings as in table fixed into the bars only. 100mm cover above in the cavity.

2



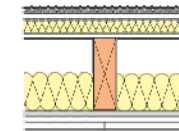
23mm thick (softwood or chipboard) floor boarding over minimum 188mm x 32mm timber joists at 600mm centres. Gyprock RB2 Resistant Bars fixed to underside of joists at 480mm centres and at perimeter with ceiling linings as in table fixed into the bars only.

3



23mm thick (softwood or chipboard) floor boarding over minimum 188mm x 32mm timber joists at 600mm centres. Gyprock RB2 Resistant Bars fixed to underside of joists at 480mm centres and at perimeter with ceiling linings as in table fixed into the bars only. 100mm cover above in the cavity.

4



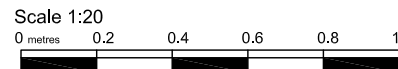
Typical platform floor construction (comprising walking surface of 18mm thick wood board flooring, spot-bonded with Gyprock Resistant Bars at 300mm centres to a substrate of Gyprock Mark laid on 18mm thick Sound Densifying Floor Mat, laid on a minimum of 18mm wood-based sheet sub-block nailed to the joists) over minimum 188mm x 32mm timber joists at 600mm centres. Gyprock RB2 Resistant Bars fixed to underside of joists at 480mm centres and at perimeter with ceiling linings as in table fixed into the bars only. 100mm cover above in the cavity.

Detail	Nominal floor depth mm	Board type	Ceiling lining thickness mm	Maximum loadbearing ratio	Sound insulation $R_w (R_p + Ctr)$ Airborne dB	Sound insulation $L_{w, impact}$ Impact dB	System reference
80 minutes fire resistance BS							
1	240	WallBoard	1 x 12.5	100%	41	76	C08006
80 minutes fire resistance BS							
2	258	FireLine	2 x 12.5	100%	45	72	C08031
3	263	SoundBloc	2 x 15	100%	54	80	C08038
4	315	SoundBloc	2 x 15	100%	54 (53)	54	C08040

NB The fire resistance and sound insulation performances are for imperious partitions, walls and ceilings incorporating boards with all joints taped and filled, or dimmed according to British Gyproc's recommendations. The quoted performances are achieved only if British Gyproc components are used throughout, and the Company's fixing recommendations are strictly observed. Any variation in the specification should be checked with British Gyproc.

NB When boards are fixed direct to timber joists, Gyprock Drywall Timber Bars should be used instead of nail-fixing to minimise the risk of fixing defects occurring.

NBS work section K10 - Plasterboard drylinings / partitions / ceilings; K11 - Rigid sheet flooring / sheathing / sarking / decking / linings / castings; K20 - Timber board flooring / sarking / linings / castings

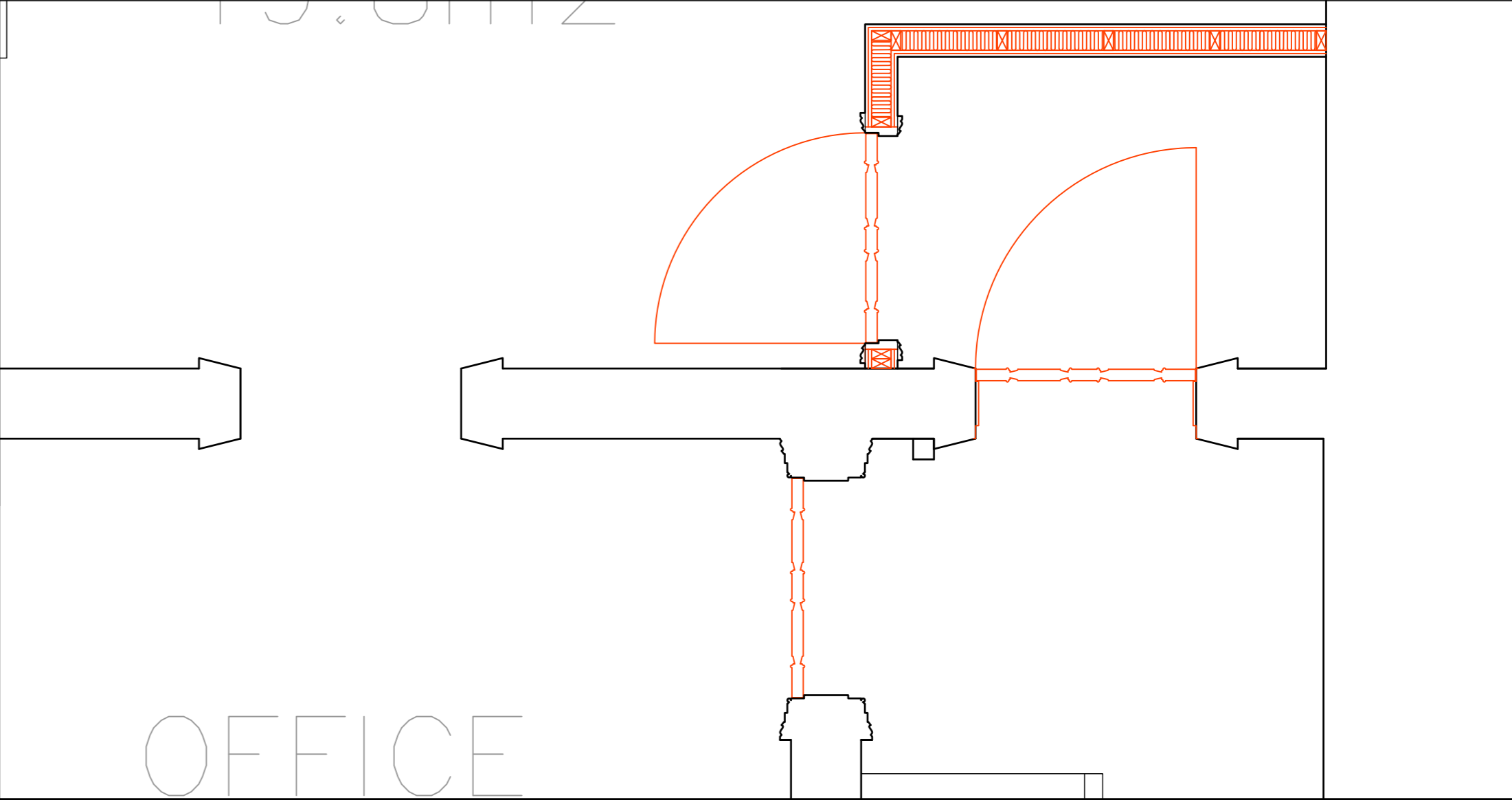


REVISIONS
A 16.10.15

Detail drawings
see Schedule of Works
Fire and acoustic separation

30 Museum Street, WC1A 1LH
for P Athill Esq.

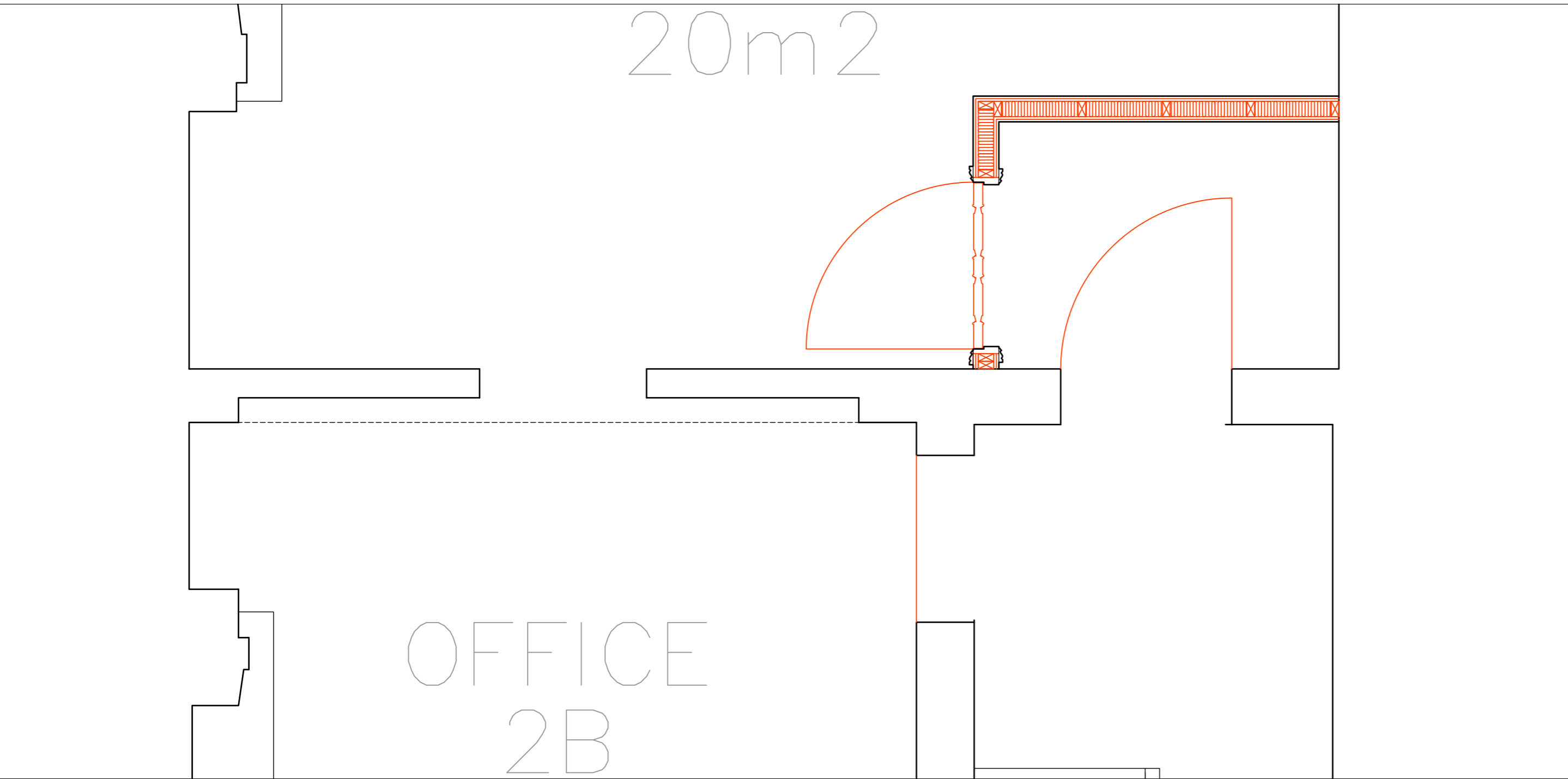
SCALE 1:20@A3	DATE 25.09.15	DWG.No F1	REV A
------------------	------------------	--------------	----------



Gregory Munson RIBA . architect

Scale 1:20
0 metres 0.2 0.4 0.6 0.8 1

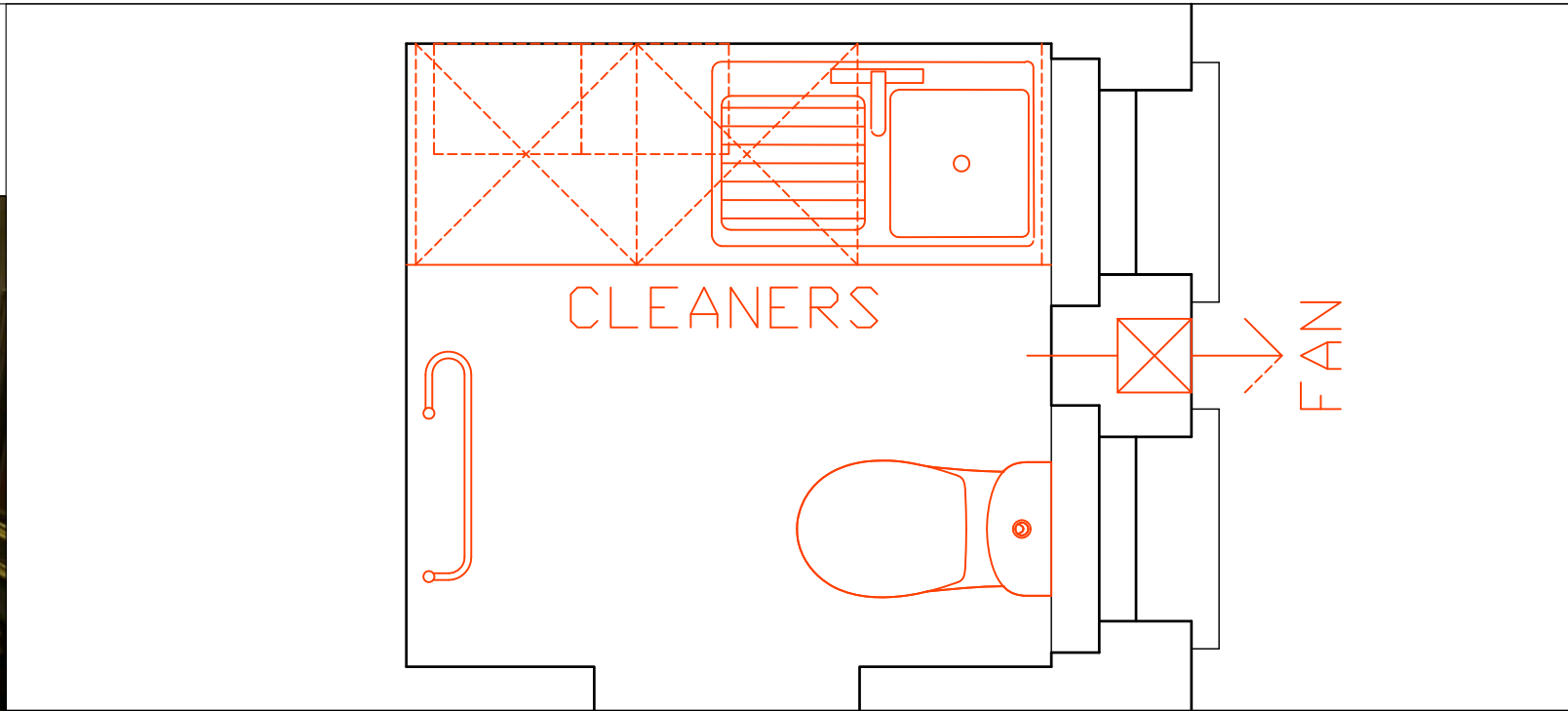
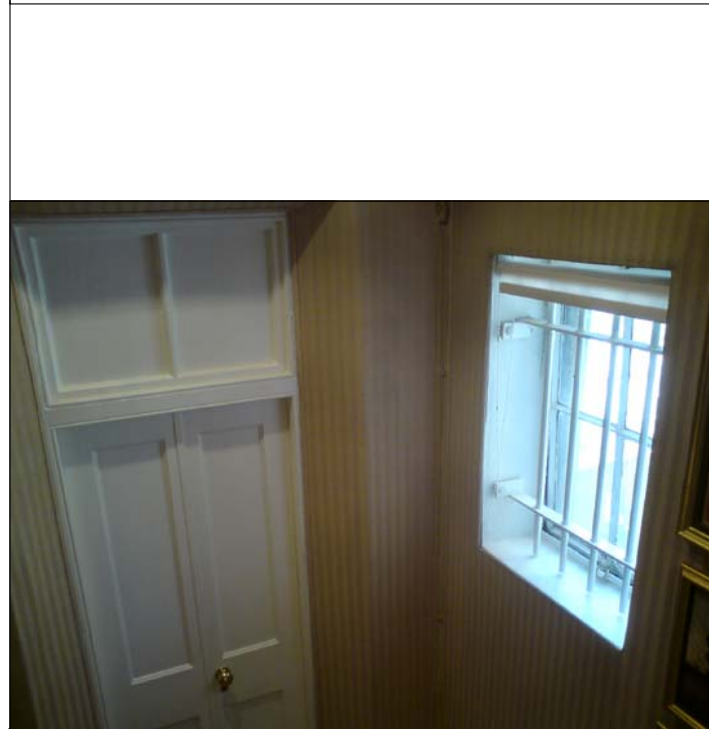
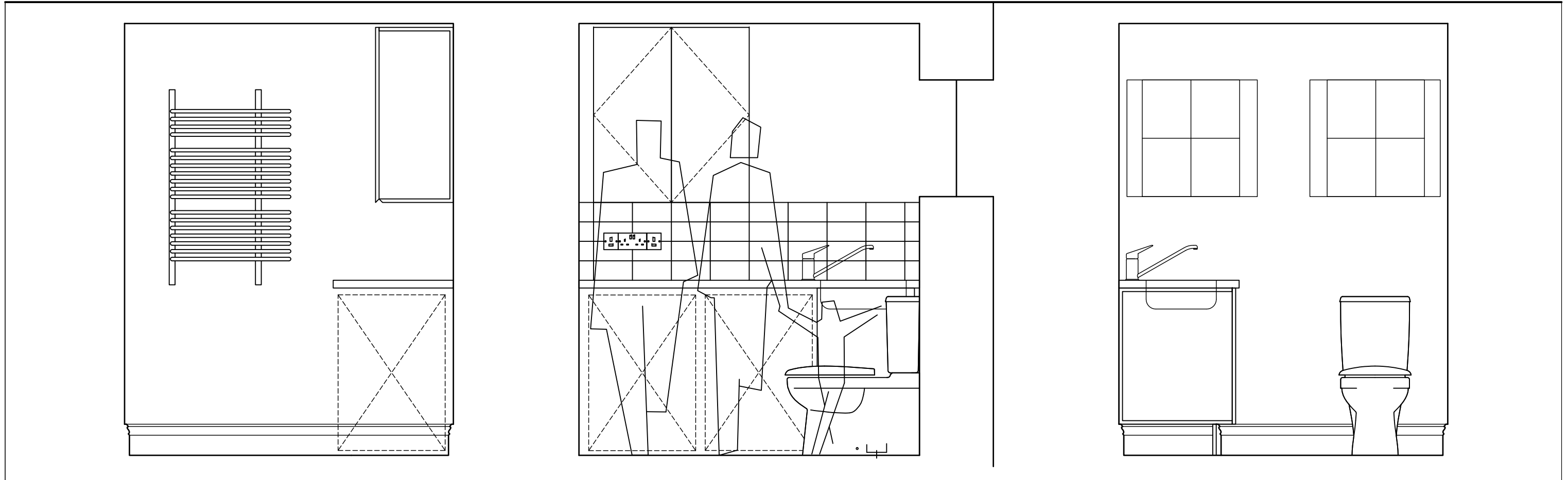
REVISIONS	Detail drawings see Schedule of Works		30 Museum Street, WC1A 1LH for P Athill Esq.	
	SCALE	DATE	DWG.No	REV
	1:20@A2	15.04.16	F4F7F8	



Gregory Munson RIBA . architect

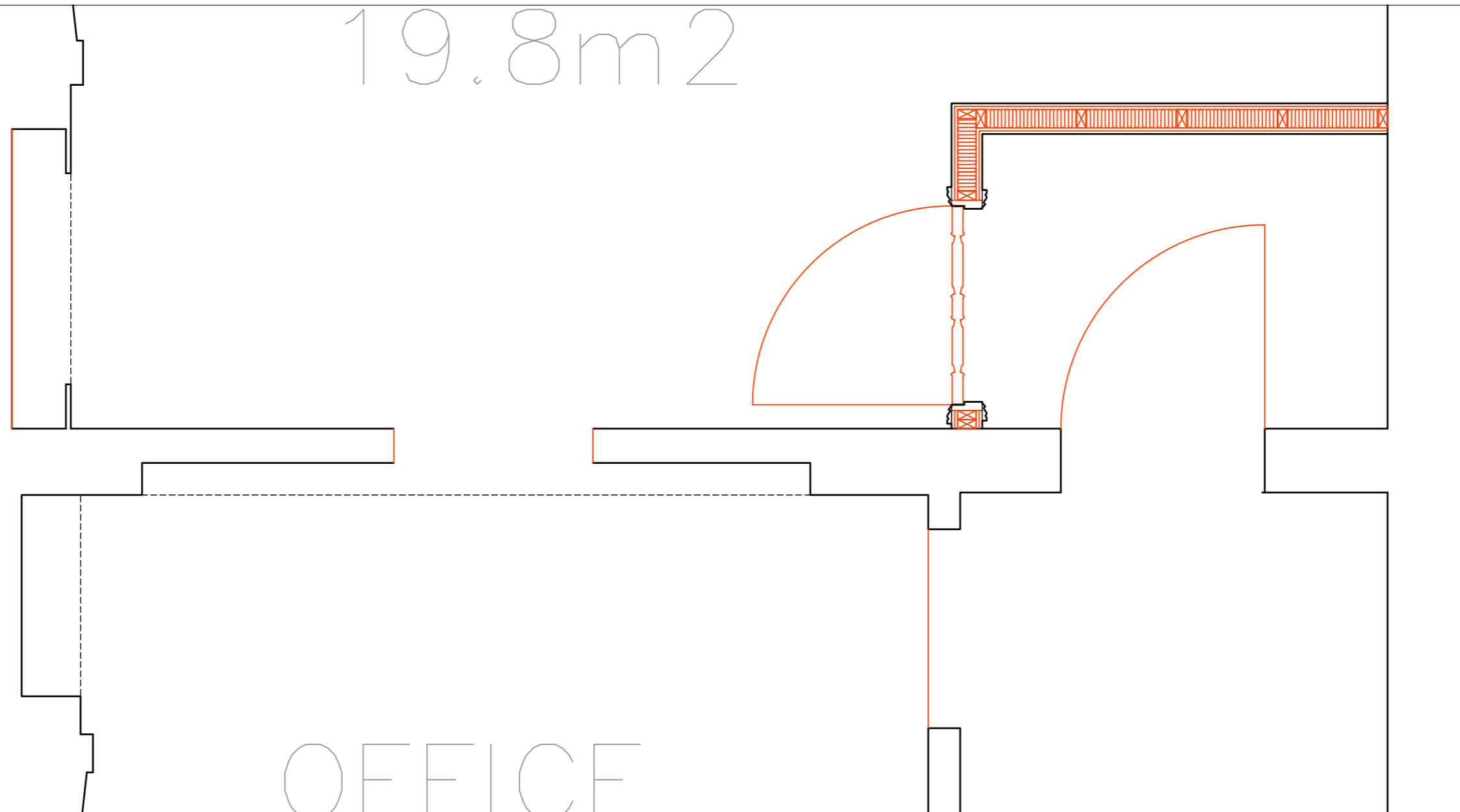
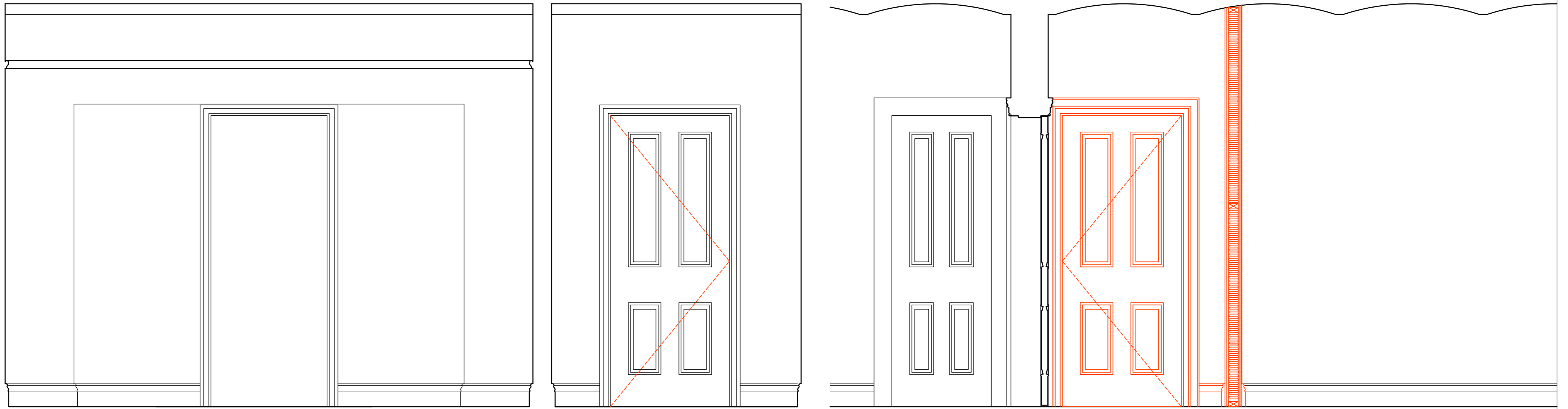
Scale 1:20
0 metres 0.2 0.4 0.6 0.8 1

REVISIONS	Detail drawings see Schedule of Works Doors and lobby		30 Museum Street, WC1A 1LH for P Athill Esq.	
	SCALE	DATE	DWG.No	REV
	1:20@A2	15.04.16	S2,S5,S6,S7	



Gregory Munson RIBA . architect

Scale 1:20 0 metres 0.2 0.4 0.6 0.8 1	REVISIONS A 16.10.15	Detail drawings see Schedule of Works Utility	30 Museum Street, WC1A 1LH for P Athill Esq.		
			SCALE 1:20@A3	DATE 25.09.15	DWG.No S4



Gregory Munson RIBA . architect

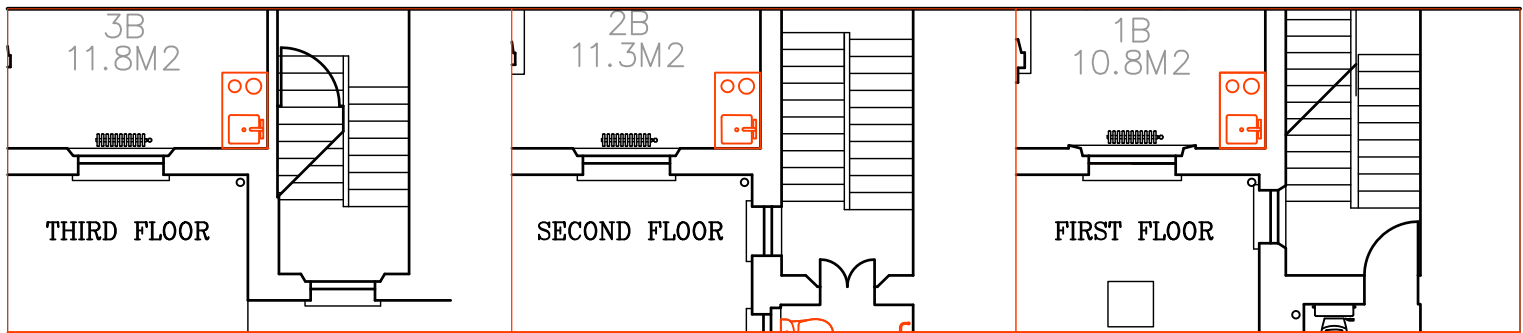
Scale 1:20
0 metres 0.2 0.4 0.6 0.8 1

REVISIONS

Detail drawings
see Schedule of Works
Doors, doorway, lobby

30 Museum Street, WC1A 1LH
for P Athill Esq.

SCALE	DATE	DWG.No	REV
1:20@A2	15.04.16	T4,T5,T6,T7	-



Gregory Munson RIBA . architect

REVISIONS -	Detail drawings see Schedule of Works Teapoints 1 per office	30 Museum Street, WC1A 1LH for P Athill Esq.		
		SCALE 1:100	DATE 16.04.16	DWG.No 010