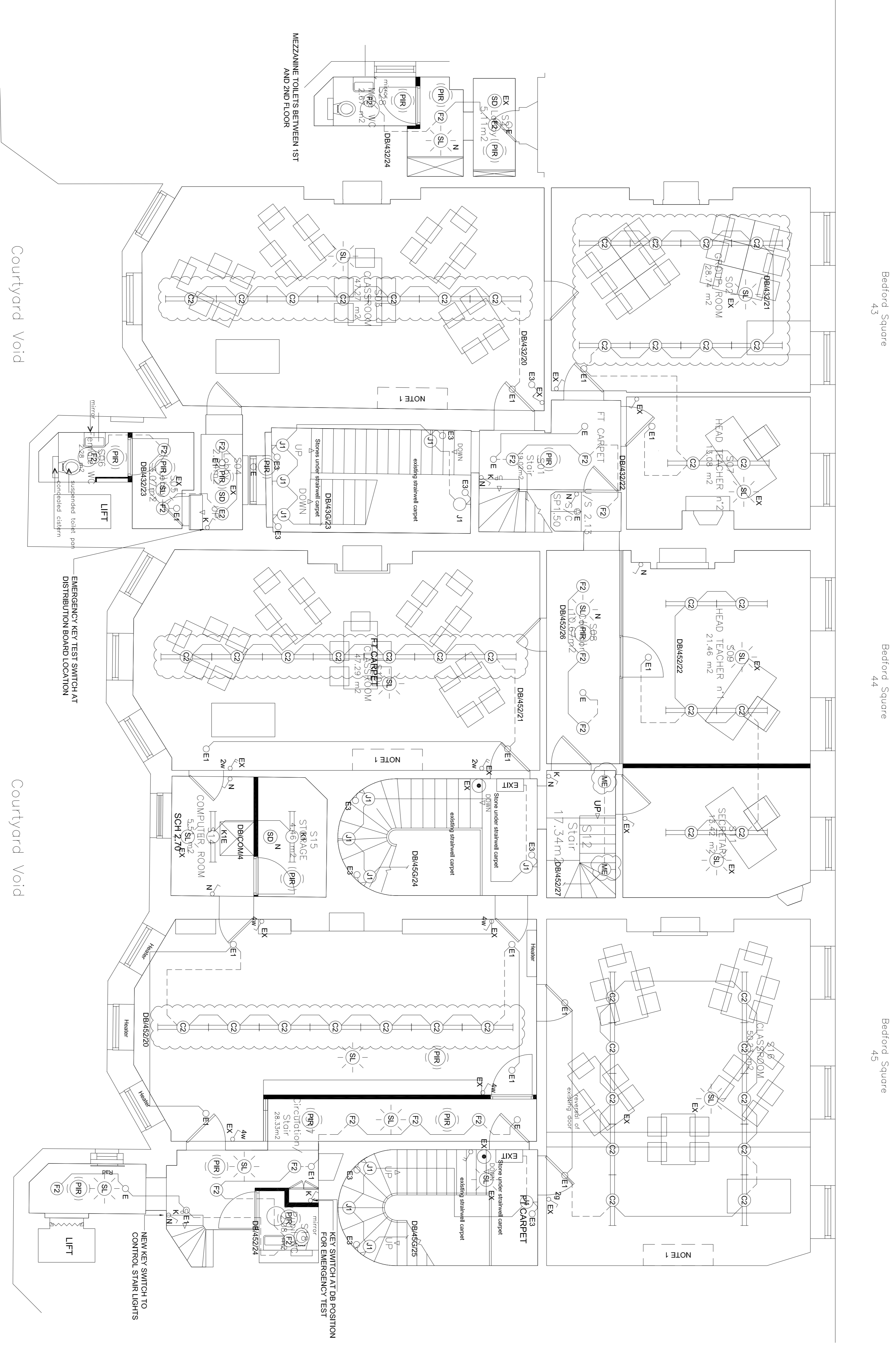


**COPYRIGHT** ©  
 FIGURED DIMENSIONS ONLY ARE TO BE USED. FOR OTHER CHECKED ON SITE PRIOR TO THE COMMENCEMENT OF WORK. DISCREPANCIES, AMBIGUITIES OR DIFFERENCES BETWEEN SBILLS OF QUANTITIES TO BE REFERRED TO CA WITHOUT DELAY. DO NOT SCALE THIS DRAWING.

- NOTES:**
- DASHED BOUNDARY INDICATES TEACHING WALL POSITION. REFER POWER DRAWINGS FOR ADDITIONAL DETAILS. LIGHTING TO BE INTEGRAL WITH THE WALLS. REFER TO THE LIGHTING POSITIONS AND CABLE ROUTES.
  - WALL LIGHTS OTHER THAN THOSE SPECIFICALLY NOTED SHALL BE STRIPPED OUT AND THE POINTS BLANKED OFF. THIS GENERALLY APPLIES TO ALL WALL LIGHTS.
  - NO.4-45 ARE LISTED AND ANY NEW ROUTES FOR CABLEING, AND NEW HOLES, ETC MUST BE APPROVED BY HERITAGE. STAIR LIGHTING WILL REQUIRE NEW CHASES. ALL DRIPS TO BE WITHIN PERMITS.
  - REMOVE EXISTING FIRE ALARMS GENERALLY WHERE ADDITIONAL BEACONS ARE REQUIRED. RETAIN EXISTING BASES AND RETAIN HEADS.
  - LIFT SPECIALIST TO RENEW LIFT SHAFT LIGHTING. WHERE ZONE 4 ARE SUPPLIED FROM TO SHOW STAIR LIGHTING TO BE CONTROLLED VIA KEY SWITCHING.



Rev	Date	Description	Drawn	Checked
1	08.06.15	REVISED PRICING ISSUE	JDS/M	JDS/M
0	26.05.15	FOR PRICING	JDS/M	JDS/M

**ARCHITECTS LAYOUTS**

**Instia Ltd**  
 Building Services Contractors  
 100 Bedford Square  
 London WC1R 4EJ  
 Tel: 020 8135 2509  
 Fax: 020 8135 2500

**PROJECT:**  
 43-45 BEDFORD SQUARE

**Client:**  
 MBS

**Title:**  
 SECOND FLOOR LEVEL  
 LIGHTING AND FIRE ALARM  
 SERVICES LAYOUT

**Scale:** 1:50 @ A1  
**Drawn:** SM  
**Date:** APRIL 15

**Dwg No:** P3284-E-012

**REVISION:** 1