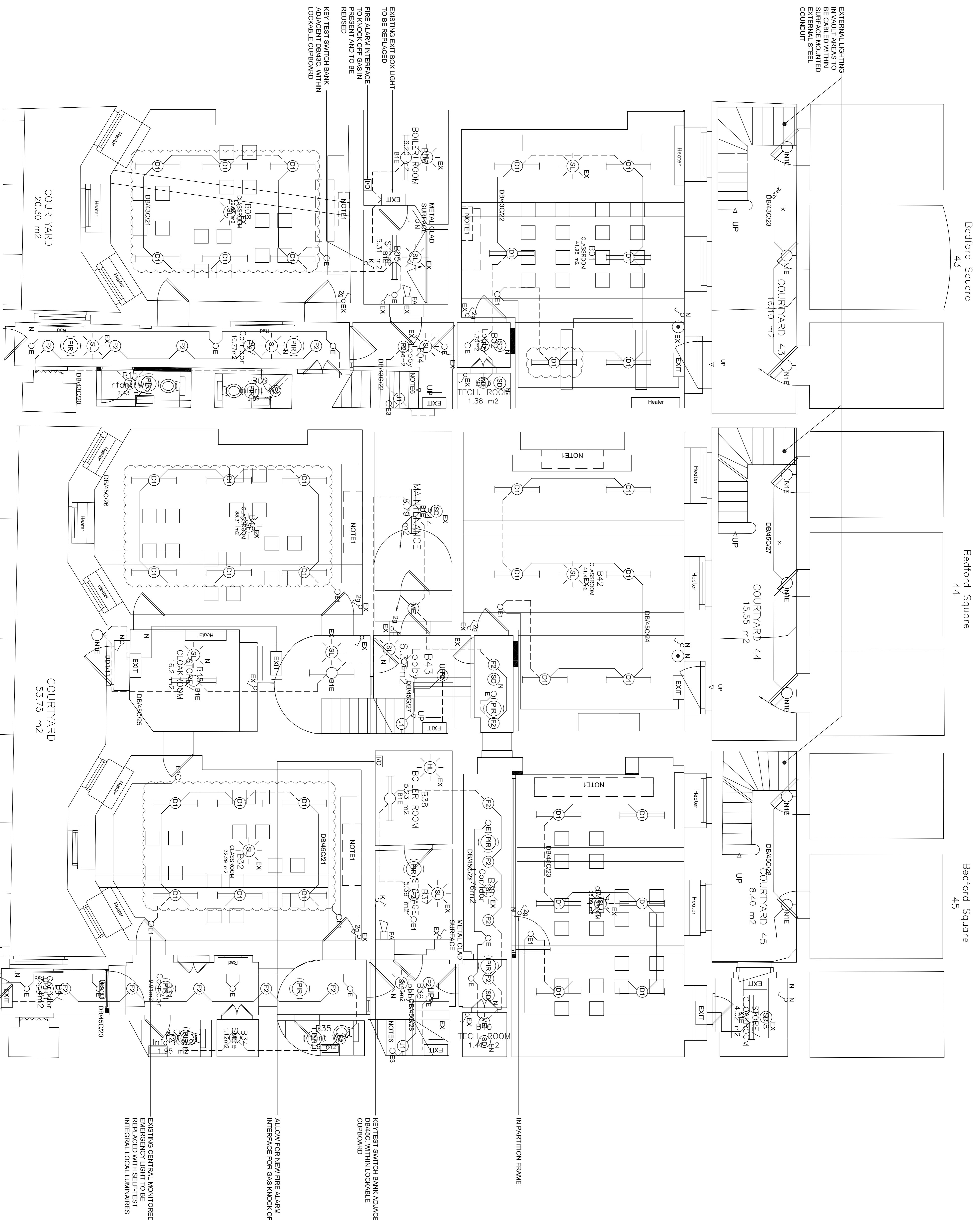


COPYRIGHT ©
 FIGURED DIMENSIONS ONLY ARE TO BE USED. FOR OTHER DIMENSIONS, REFER TO THE COMMENCEMENT OF WORK DISCREPANCIES, AMBIGUITIES OR DIFFERENCES BETWEEN SCHEDULES OF QUANTITIES TO BE REFERRED TO CA WITHOUT DELAY DO NOT SCALE THIS DRAWING.

- NOTES:**
1. DASHED BOUNDARY INDICATES TEACHING WALL POSITION. REFER POWER DRAWINGS FOR ADDITIONAL DETAILS. LIGHTING TO BE INTEGRAL WITH PARTITION FRAME.
 2. WHERE POSSIBLE REUSE EXISTING LIGHTING POSITIONS AND CABLE ROUTES.
 3. WALL LIGHTS, OTHER THAN THOSE SPECIFICALLY NOTED, SHALL BE STRIPPED OUT AND THE POINTS BLANKED OFF. THIS GENERALLY APPLIES TO ALL EXISTING LIGHTING POSITIONS.
 4. FOR CABLING, AND NEW HOLES, ETC MUST BE APPROVED BY HERITAGE. STAIR LIGHTING WILL REQUIRE NEW CHASSES. ALL DRIPS TO BE WITHIN REUSE EXISTING FIRE ALARMS GENERALLY.
 5. WHERE ADDITIONAL BEACONS ARE REQUIRED, RETAIN EXISTING BASES AND RETAIN HEADS.
 6. LIFT SPECIALIST TO RENEW LIFT SHAFT LIGHTING.
 7. WHERE ZONE ARE STRIPPED FROM, TO SHOW STAIR LIGHTING TO BE CONTROLLED VIA KEY SWITCHING.



EXTERNAL LIGHTING IN VAULT AREAS TO BE CABLED WITHIN SURFACE MOUNTED EXTERNAL STEEL CONDUIT

EXISTING EXIT BOX LIGHT TO BE REPLACED
 FIRE ALARM INTERFACE TO KNOCK OFF GAS IN PRESENT AND TO BE REUSED
 KEY TEST SWITCH BANK ADJACENT DB43C, WITHIN LOCKABLE CURBOARD

ALLOW FOR NEW FIRE ALARM INTERFACE FOR GAS KNOCK OFF

EXISTING CENTRAL MONITORED EMERGENCY LIGHT TO BE REPLACED WITH SELF-TEST INTEGRAL LOCAL LUMINAIRES

KEY TEST SWITCH BANK ADJACENT DB45C, WITHIN LOCKABLE CURBOARD

IN PARTITION FRAME

Instia Ltd
 Building Services Contractors
 100, The Quadrant, London, W1 8PF
 Tel: 020 8135 2509 Fax: 020 8135 2500

PROJECT:
 43-45 BEDFORD SQUARE

Client:
 MBS

Rev	Date	Description	Drawn	Checked
1	08.06.15	REVISED PRICING ISSUE	JDS/M	JDS/M
0	26.05.15	FOR PRICING	JDS/M	JDS/M

ARCHITECTS LAYOUTS

Title:
 COURTYARD LEVEL LIGHTING AND FIRE ALARM SERVICES LAYOUT

Scale: 1:50 @ A1
Drawn: SM
Date: APRIL 15

Dwg No: P3284-E-009

REVISION: 1