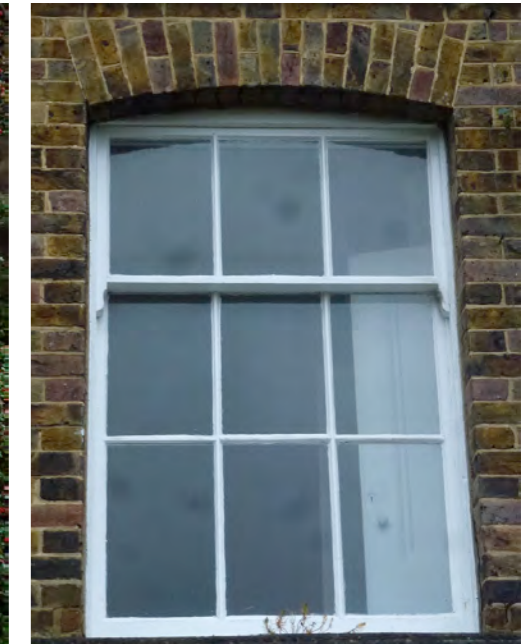


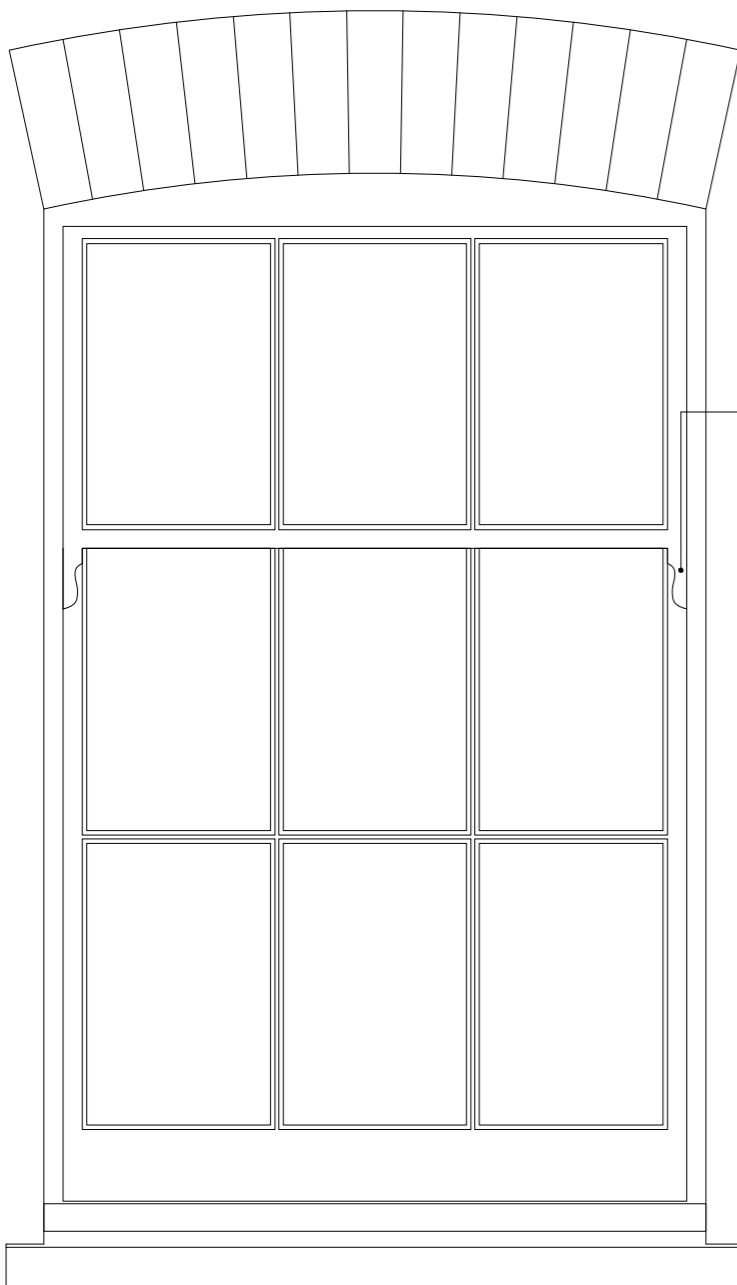
OCTOBER 2015



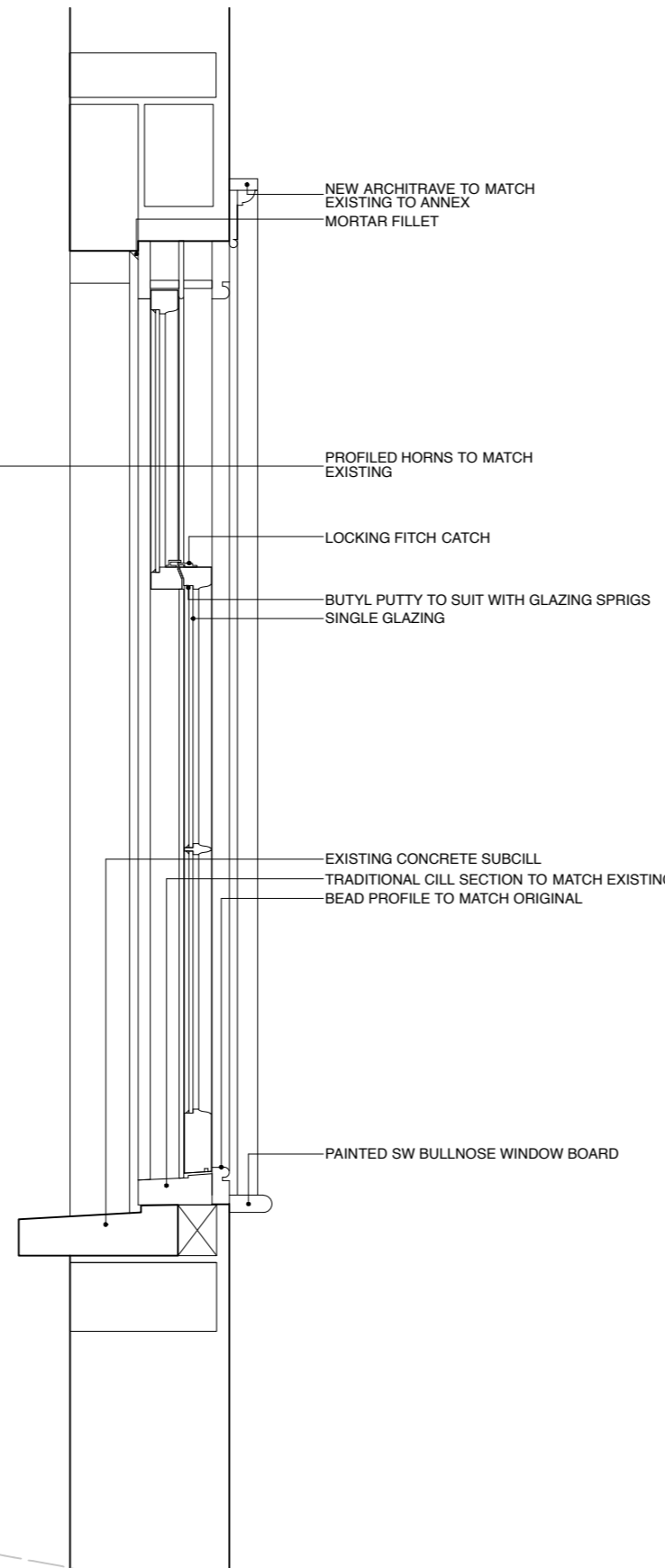
CASEMENT TO BE REPLACED



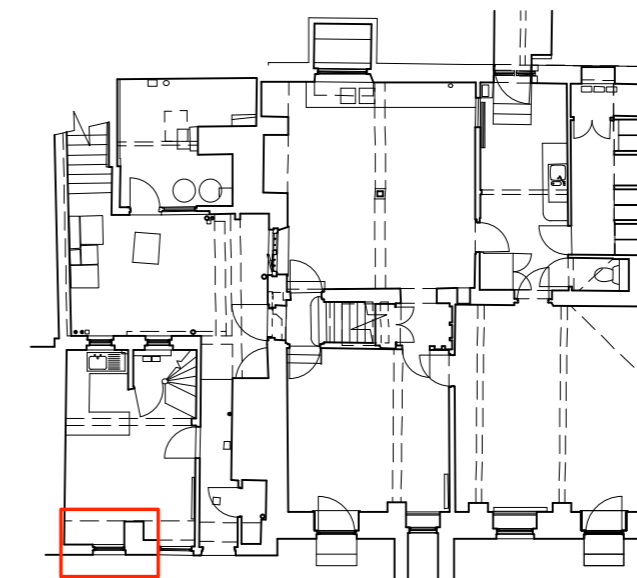
WCU2 TO BE COPIED



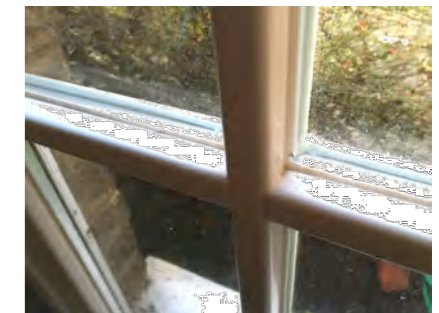
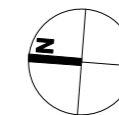
### EXTERNAL ELEVATION



### SECTION



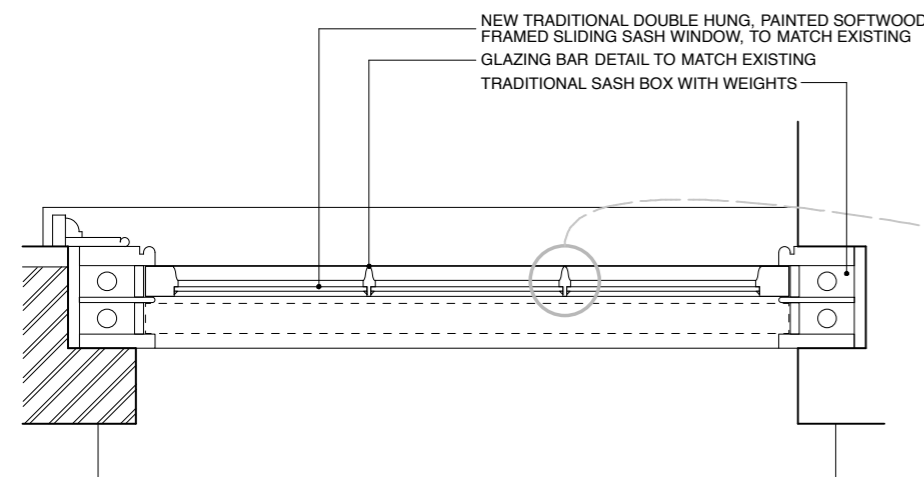
### LOCATION PLAN 1:200



EXISTING CASEMENT GLAZING BARS

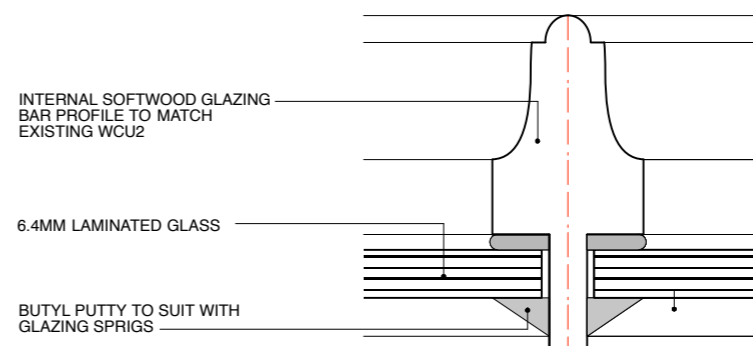


WCU2 GLAZING BARS TO BE COPIED



### PLAN

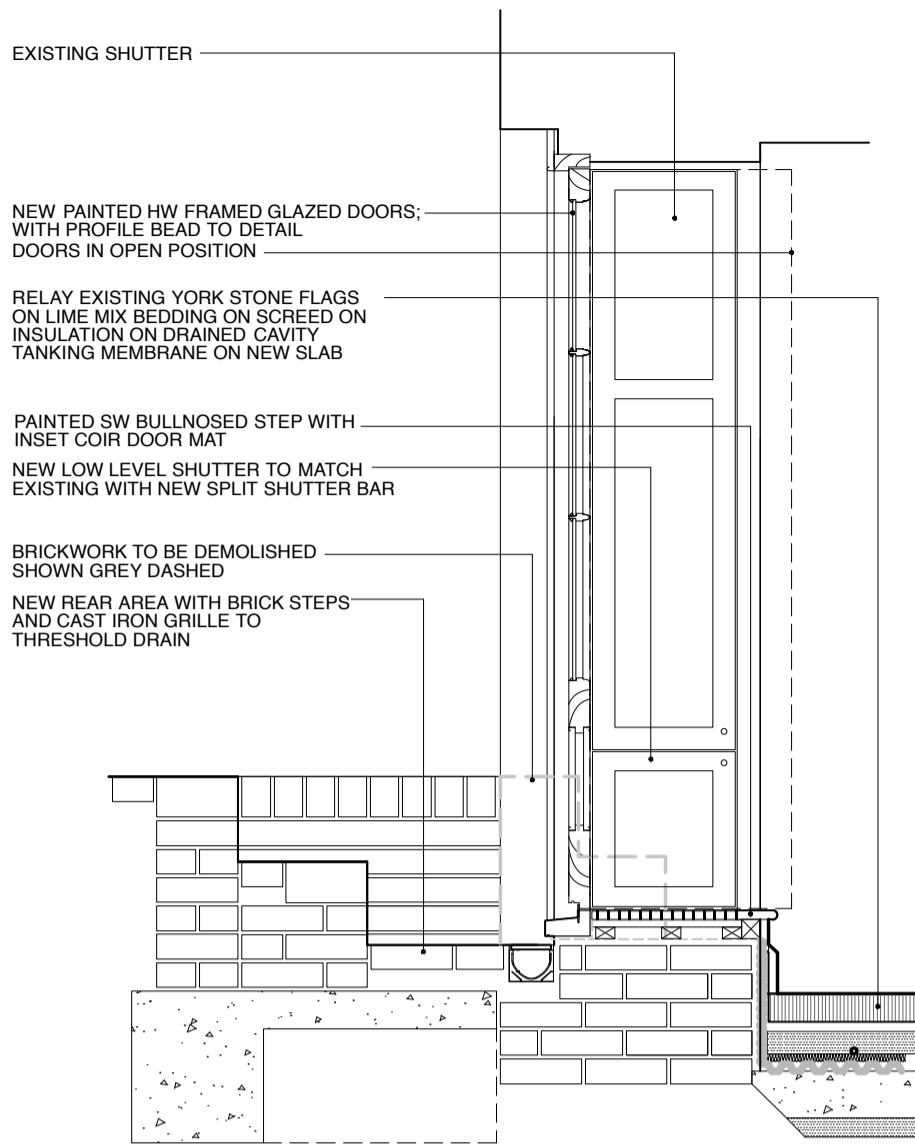
### GLAZING BAR DETAIL 1:1



**Lisa Shell architects**  
Architects  
 www.lisashellarchitects.co.uk

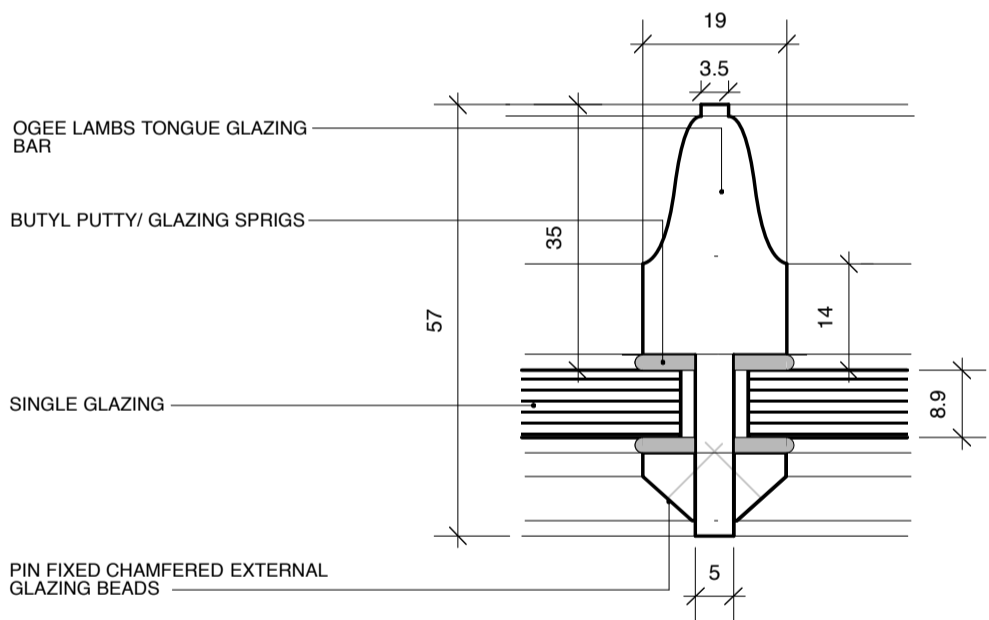
**4 THE GROVE  
 LONDON N6**  
**LOWER GROUND FLOOR  
 EXTENSION KITCHEN  
 NEW WINDOW WLC2  
 GRO/CO/103/A**  
 1:10/1:1 @ A3  
 DO NOT SCALE FROM THIS DRAWING  
 REFER ALL DISCREPANCIES TO ARCHITECT

29/04/16  
 ISSUE TO **PLANNING**  
 FOR **APPROVAL**

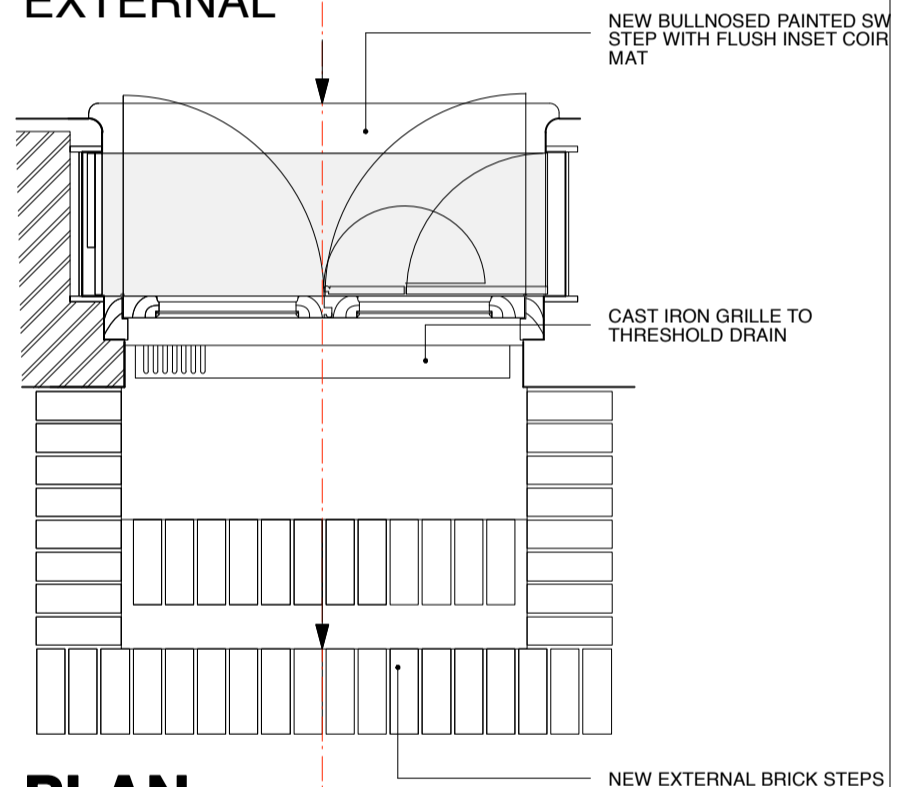


**SECTION**

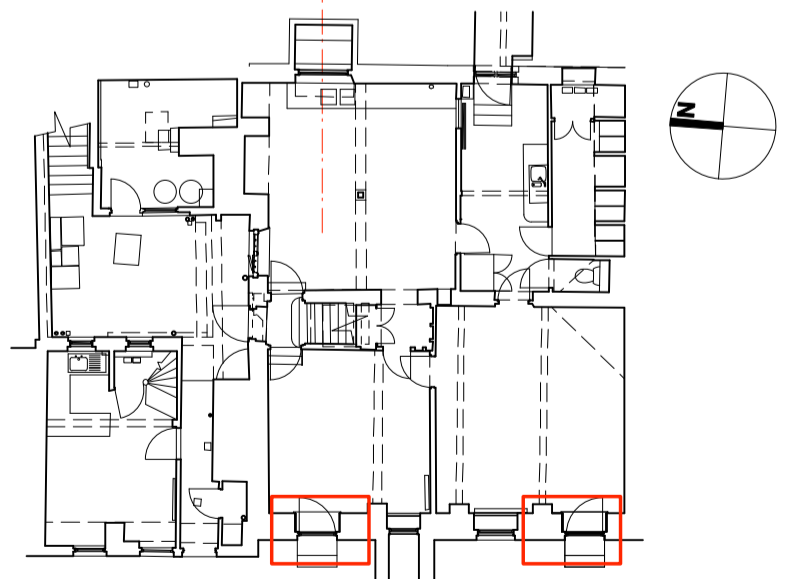
**DETAIL 1:1**



**ELEVATION EXTERNAL**

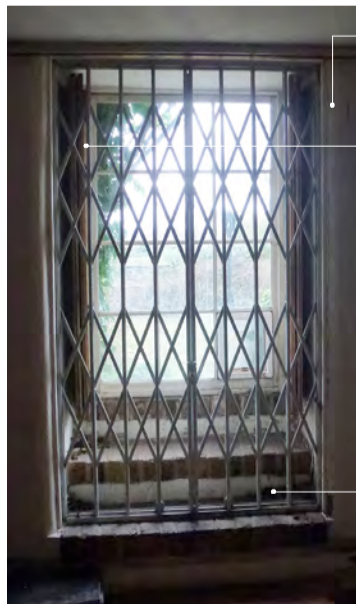


**PLAN**



**LOCATION PLAN 1:200**

OCTOBER 2015



MODERN GLAZED DOORS AND SECURITY SHUTTERS INSTALLED C. 1999 REF LISTED BUILDING CONSENT LE9800685R1

ORIGINAL SHUTTERS TO BE RETAINED

BRICK STEPS TO INTERIOR

**Lisa Shell architects**

www.lisashellarchitects.co.uk

**REVISIONS/ ISSUE**

29/04/16 A  
ISSUE TO CAMDEN PLANNING FOR PLANNING PERMISSION

**4 THE GROVE LONDON N6**

LOWER GROUND FLOOR

**FAMILY & PLAYROOM**

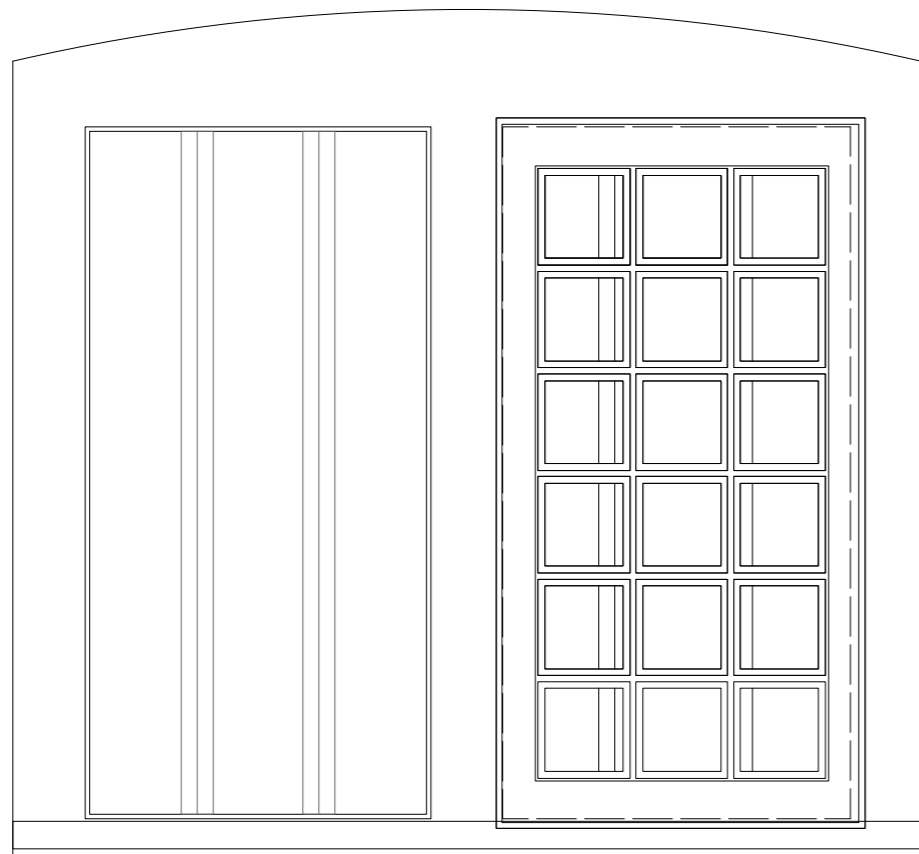
**NEW DOORS WL3 & WL5**  
**GRO/CO/101/A**

1:20 @ A3

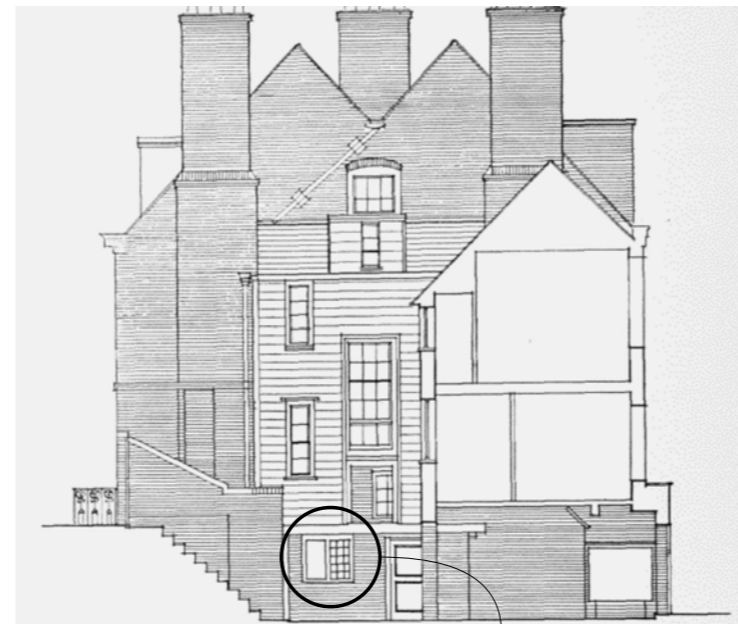
DO NOT SCALE FROM THIS DRAWING  
REFER ALL DISCREPANCIES TO ARCHITECT

# EXTERNAL ELEVATION

OCTOBER 2015

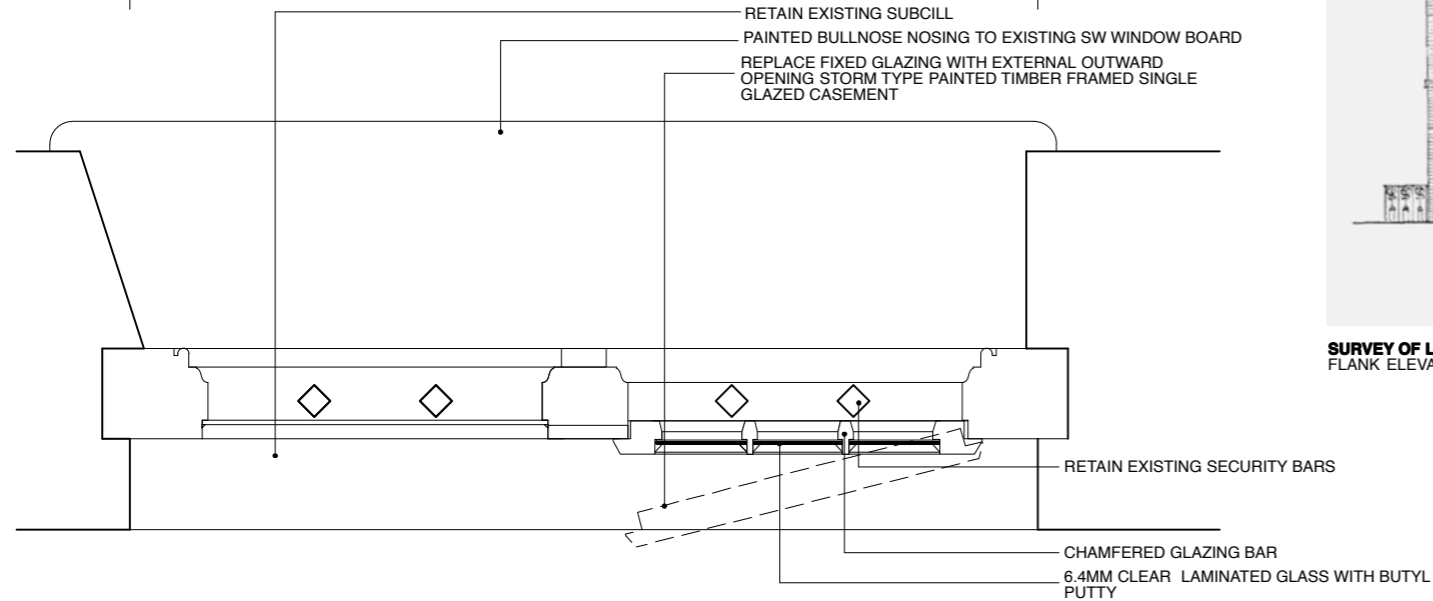


OCTOBER 2015



SURVEY OF LONDON 1936  
FLANK ELEVATION

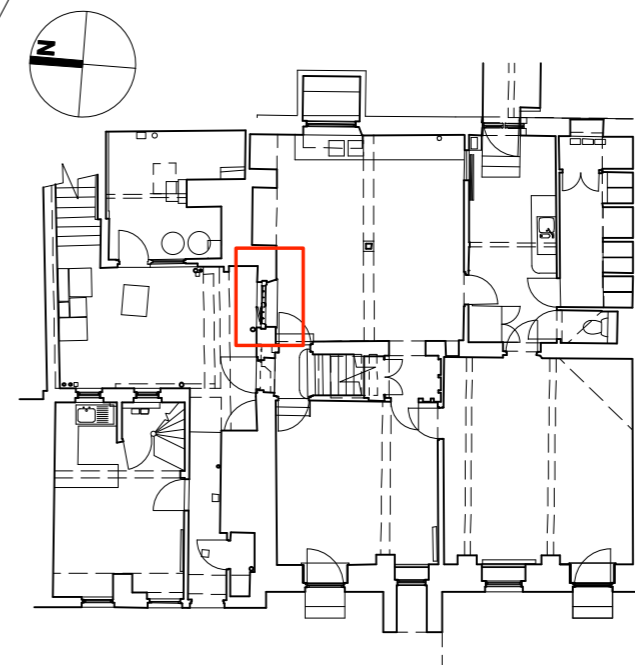
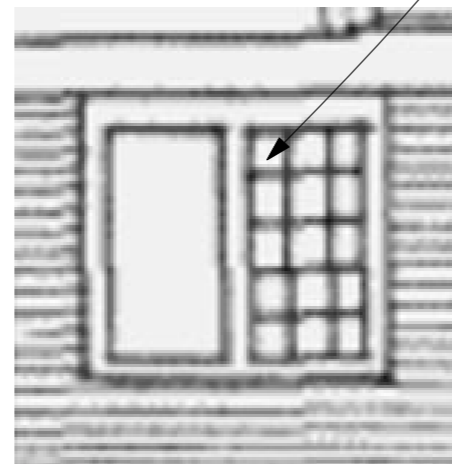
RETAIN EXISTING SUBCILL  
PAINTED BULLNOSE NOSING TO EXISTING SW WINDOW BOARD  
REPLACE FIXED GLAZING WITH EXTERNAL OUTWARD  
OPENING STORM TYPE PAINTED TIMBER FRAMED SINGLE  
GLAZED CASEMENT



RETAIN EXISTING SECURITY BARS

CHAMFERED GLAZING BAR  
6.4MM CLEAR LAMINATED GLASS WITH BUTYL  
PUTTY

## PLAN



LOCATION PLAN  
1:200

**Lisa Shell**  
architects  
www.lisashellarchitects.co.uk

4 THE GROVE  
LONDON N6

LOWER GROUND FLOOR  
KITCHEN  
NEW WINDOW WL11  
**GRO/CO/102/A**

1:10 @ A3  
DO NOT SCALE FROM THIS DRAWING  
REFER ALL DISCREPANCIES TO ARCHITECT

### REVISIONS/ ISSUE

29/04/16 A  
ISSUE TO **PLANNING**  
FOR **APPROVAL**