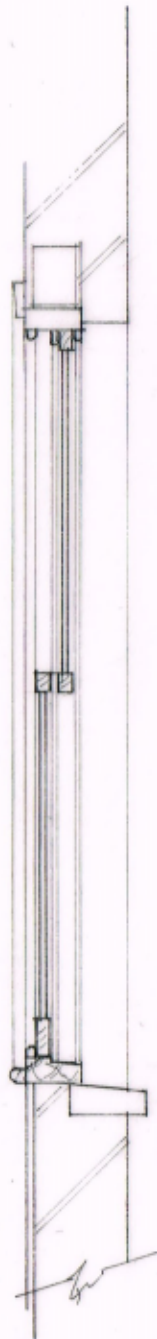


existing lintel
 architrave
 18mm staff bead

ex 150 x 75mm h.w.
 cill
 s.w. cill nosing



existing brick arch
 150x 75 s.w. head

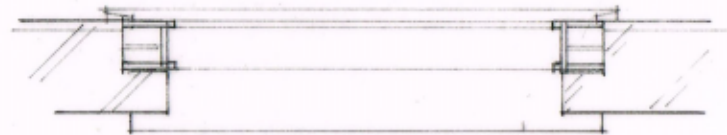
ex 40x40 mm s.w. top, mid
 and side rails rebated for
 double glazed panes

ex 100 x 40 s.w. bottom
 rail

existing stone sub cills

TYPICAL VERTICAL SECTION

timber weight boxes



external brick wall

TYPICAL HORIZONTAL SECTION

EXISTING UPVC FRAMED DOUBLE GLAZED WINDOWS AT FIRST FLOOR LEVEL TO BE REMOVED AND ORIGINAL BRICK REVEALS EXPOSED.

NEW TIMBER FRAMED VERTICAL SLIDING SASH WINDOWS TO BE FITTED TO EXISTING REVEALS WITH ALL TIMBER SECTIONS TO MATCH RETAINED WINDOWS AT SECOND FLOOR LEVEL.

TIMBER RAILS TO BE FITTED WITH STEPPED DOUBLE GLAZED PANES WITH TOUGHENED GLASS TO LOWER PANES. GLAZING TO COMPRISE 4 MM PANES AND 10MM ARGON FILLED VOID BETWEEN.

BOX FRAMES FITTED WITH CAST AND LEAD WEIGHTS TO COMPENSATE FOR ADDITIONAL GLASS LOAD CONNECTED TO SASHES WITH WAX COATED SAH CORD AND STEEL PULLIES.

	date	comment
REV. A		
Location		Drwg. No.
1 Tasker road		TR/PL/04
London NW3 2YR		
Project		Drawn:
First Floor Front Window		XUR
Renewal		
Drawing Title		Scale:
Typical sections		1:20 @ A3
brampton		
surveyors & planning consultants		
111a George Lane		
London E18 1AN		
t: 020 8989 5100		