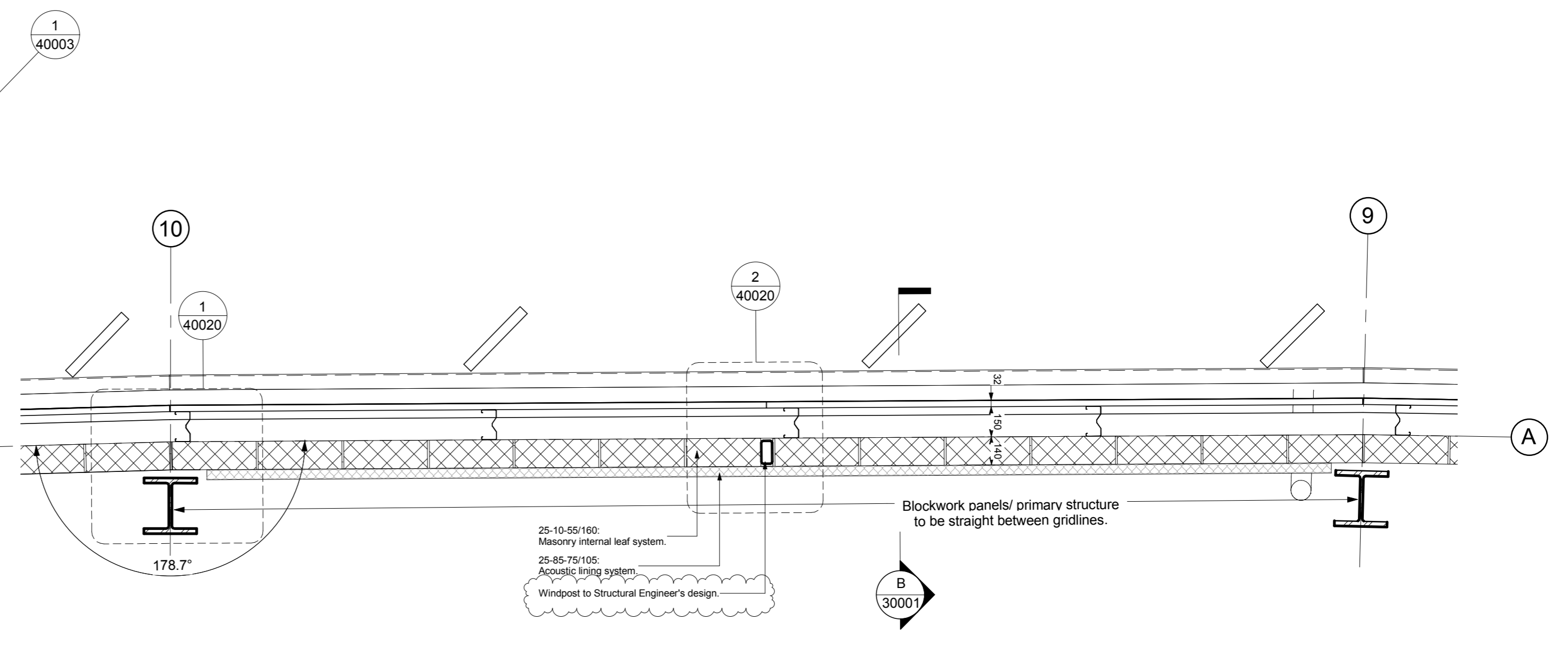
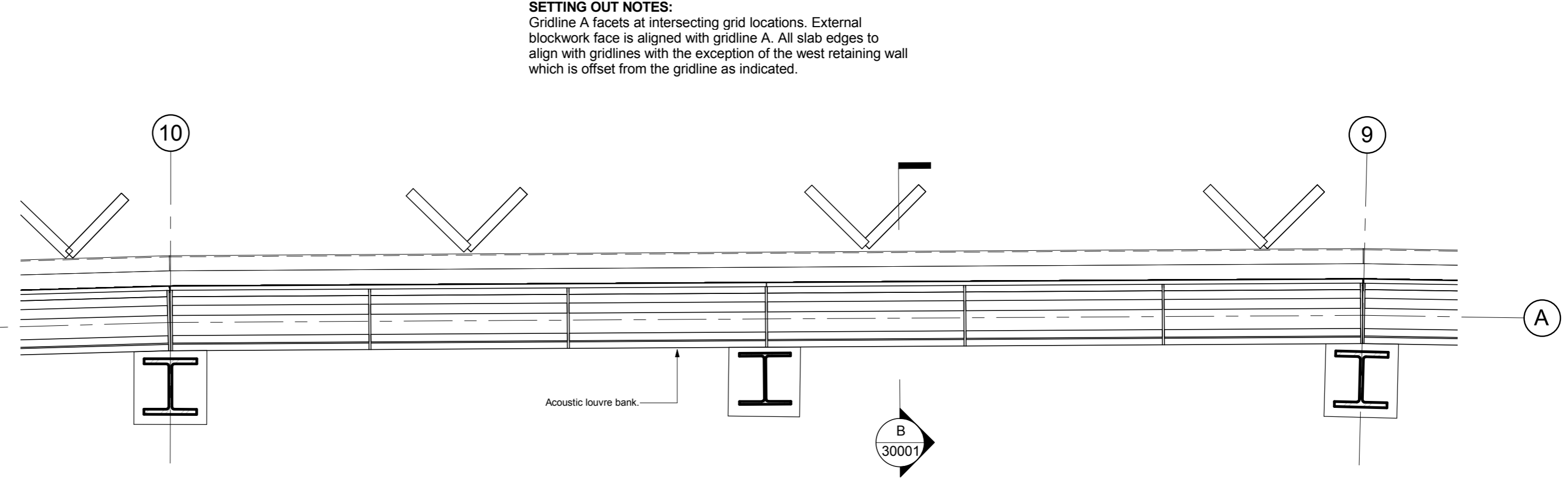


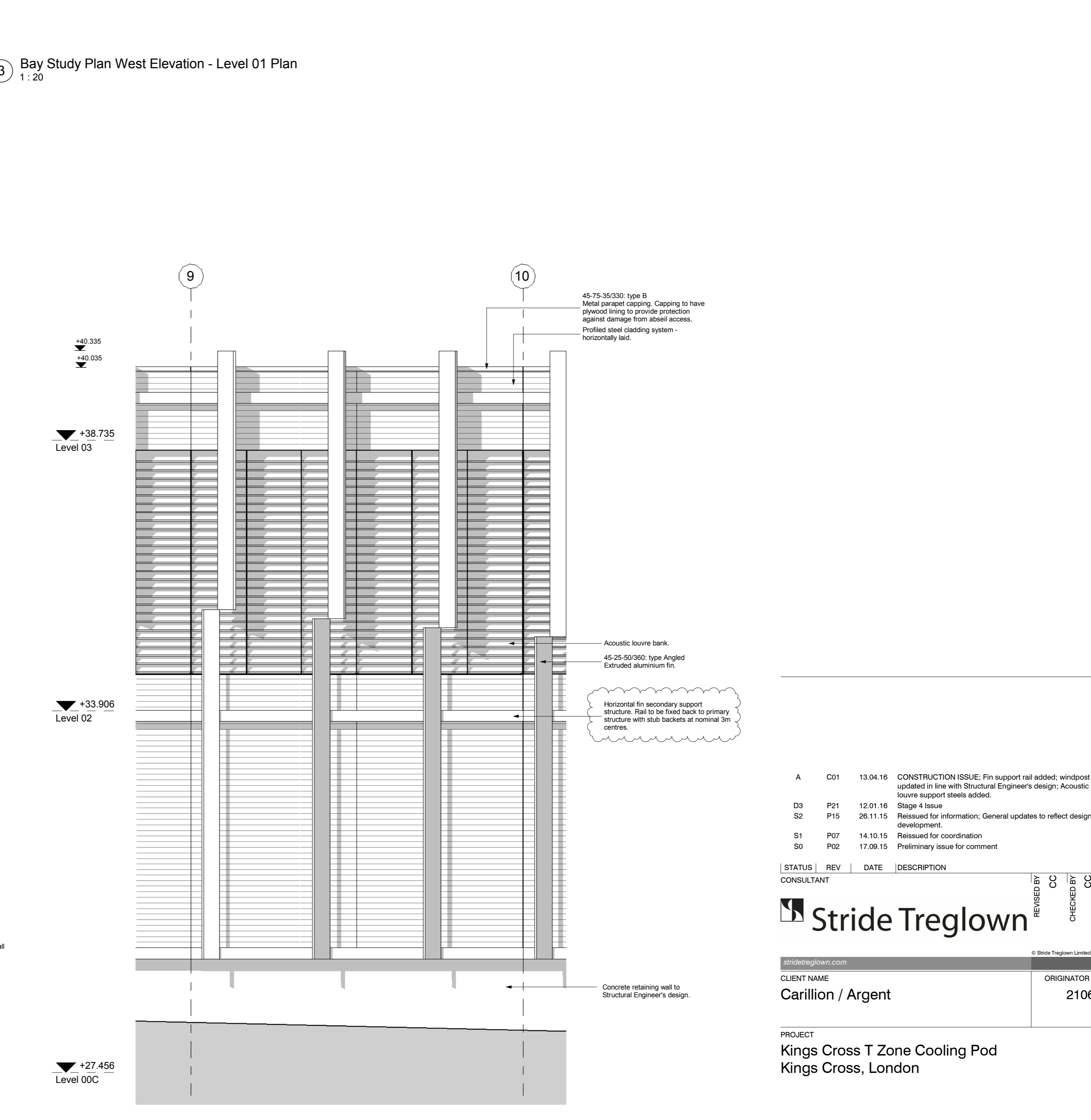
1 Bay Study - West Elevation Section
1:20



2 Bay Study Plan West Elevation - Level 00 Plan
1:20



3 Bay Study Plan West Elevation - Level 01 Plan
1:20



4 Bay Study Elevation West Elevation
1:50

SETTING OUT NOTES:
Gridline A facets at intersecting grid locations. External blockwork face is aligned with gridline A. All slab edges to align with gridlines with the exception of the west retaining wall which is offset from the gridline as indicated.

STATUS	REV	DATE	DESCRIPTION
A	C01	13.04.16	CONSTRUCTION ISSUE: Fin support rail added; windpost updated in line with Structural Engineer's design; Acoustic louvre support steels added.
D3	P21	12.01.16	Stage 4 Issue
	P15	26.11.15	Reissued for information; General updates to reflect design development.
S1	P07	14.10.15	Reissued for coordination
S0	P02	17.09.15	Preliminary issue for comment

Stride Treglown

CLIENT NAME: Carillion / Argent
ORIGINATOR NO: 21062

PROJECT: Kings Cross T Zone Cooling Pod
Kings Cross, London

DRAWING TITLE: Bay Study - West Elevation 1

SUITABILITY STATUS	SCALE
A Construction	As indicated @ A1
PROJECT ORIGINATOR ZONE LEVEL TYPE ROLE CLASS NUMBER	REVISION
KXC-STL-XX-XX-DR-A-XXXX-31005	C01