

36 Great James St

- ① Existing Kitchen and fittings removed
- ② Non original flagstone floor removed along with Underfloor heating installation
- ③ Non original plasterboard ceiling removed throughout
- ④ Plasterboard partition removed
- ⑤ Non original wall to stair removed to investigate structure between
- ⑥ Existing utility fittings removed
- ⑦ Non original window and door set removed along with precast cill
- ⑧ Non original window removed along with precast cill
- ⑨ Non original internal door removed
- ⑩ Demolish wall and make ready for new opening

REV	DATE (dd.mm.yyyy)	DESCRIPTION
-	18.12.2015	Planning Issue
A	24.02.2016	Revision to Lower Ground Demolition Plan
B	17.03.2016	Revised to retain existing annex
C	31.03.2016	Revision to Lower Ground Demolition Plan

DO NOT SCALE FROM THIS DRAWING. ALL DIMENSIONS ARE TO BE CHECKED ON SITE. ALL OMISSIONS AND DISCREPANCIES TO BE REPORTED TO THE ARCHITECT IMMEDIATELY. THIS DRAWING IS TO BE READ IN CONJUNCTION WITH ALL CONSULTANTS' INFORMATION. QUINN ARCHITECTS LTD RETAIN COPYRIGHT OF ALL INFORMATION IN THIS DRAWING.

REV PLAN

Name

- ① All existing panelling maintained
- ② All existing cornices maintained
- ③ Existing staircase maintained and stripped using poultice paint removal system to reveal the original carving.
- ④ Non original handrail to basement removed
- ⑤ Existing plasterboard linings removed to floor and ceilings
- ⑥ Existing non original flagstone flooring removed along with underfloor heating system
- ⑦ Demolish wall and make ready for new opening
- ⑧ Non original external timber doorset removed
- ⑨ Non original timber windows removed
- ⑩ Non original internal door removed
- ⑪ Existing glazed balustrade removed
- ⑫ External non original flagstone slabs removed
- ⑬ Existing Fire alarm sander/panel removed
- ⑭ Modern Render finish removed from Terrace party wall to expose brickwork
- ⑮ Non original staircase removed

Notes

Quinn Architects

Rochelle School Arnold Circus London E2 7ES
+44 (0)20 7613 3843 www.quinnuk.com

DRAWING TITLE

Lower Ground & Ground Floor Demolition Plans

SCALE
1:50 @ A1 / 1:100 @ A3

DRAWN BY
NF

DATE
DEC 2015

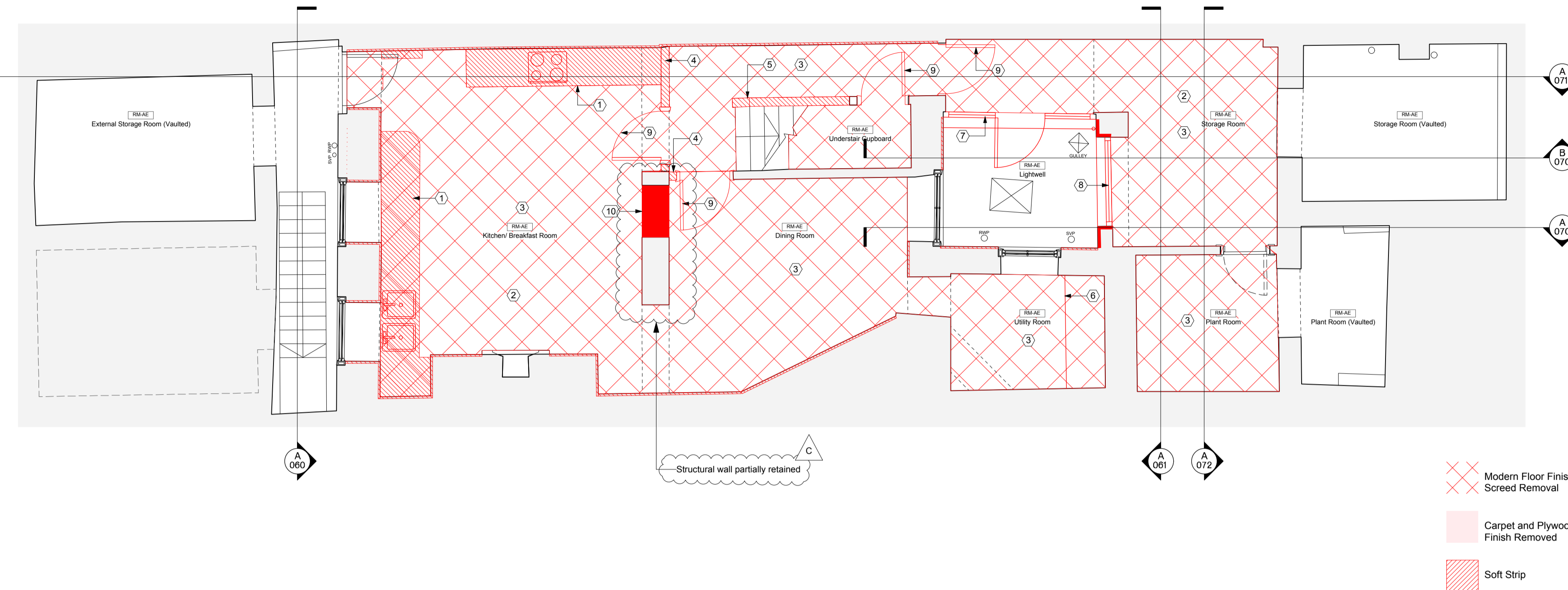
CHECKED BY
LQ

DRAWING STATUS
PLANNING

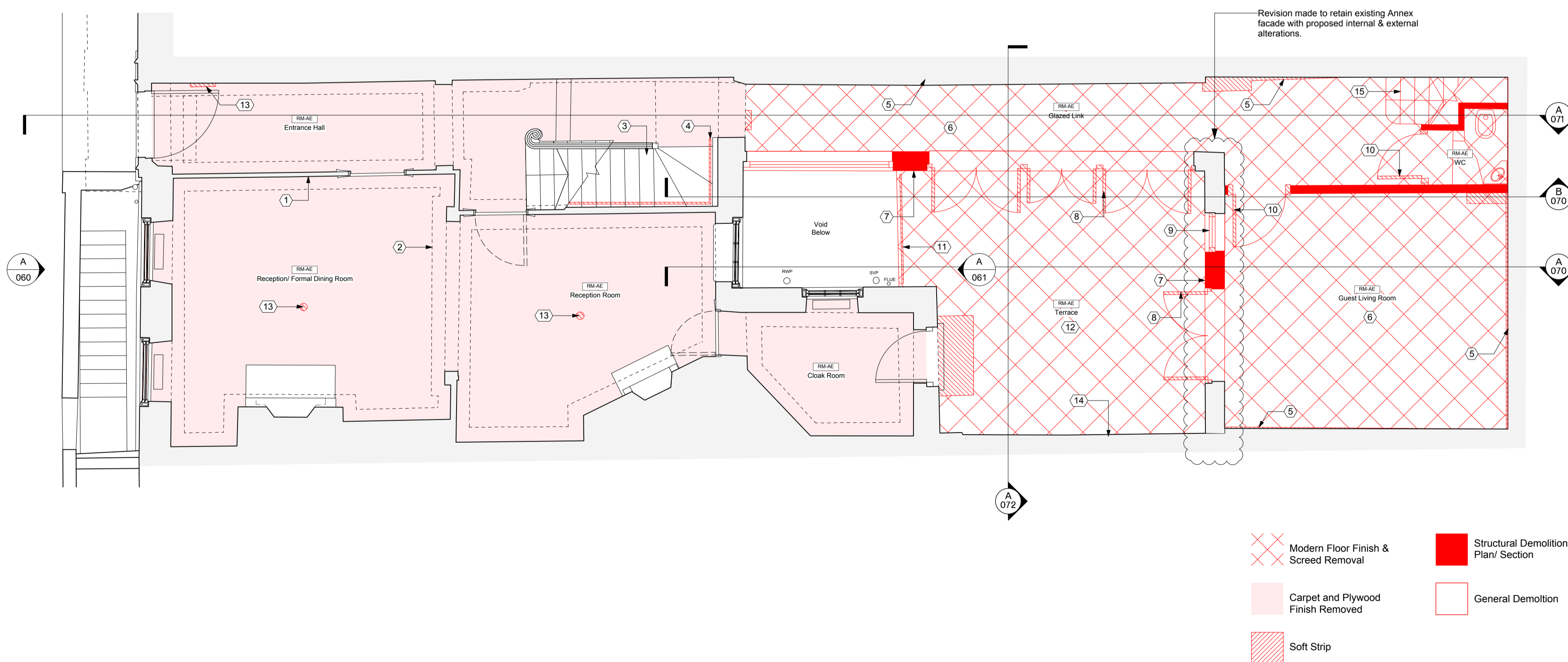
PROJECT NO.
QA149

DRAWING NO.
053

REV
C



A Lower Ground Floor Demolition Plan
1:50 @ A1 / 1:100 @ A3



B Ground Floor Demolition Plan
1:50 @ A1 / 1:100 @ A3