

Notes

1. Drawing shows design intent only by HD.
2. Detailed canopy design by specialist.
3. Structural integration and interactions to be designed and coordinated by the specialist, structural engineer and coordinated with shopfront specialist.
4. All dims are approximate and need to be checked and confirmed on site.
5. Light fittings, type, location and specification to be designed by lighting specialist.
6. Text content, type, logo, colour and any additional requirements to be designed and coordinated by branding specialist.



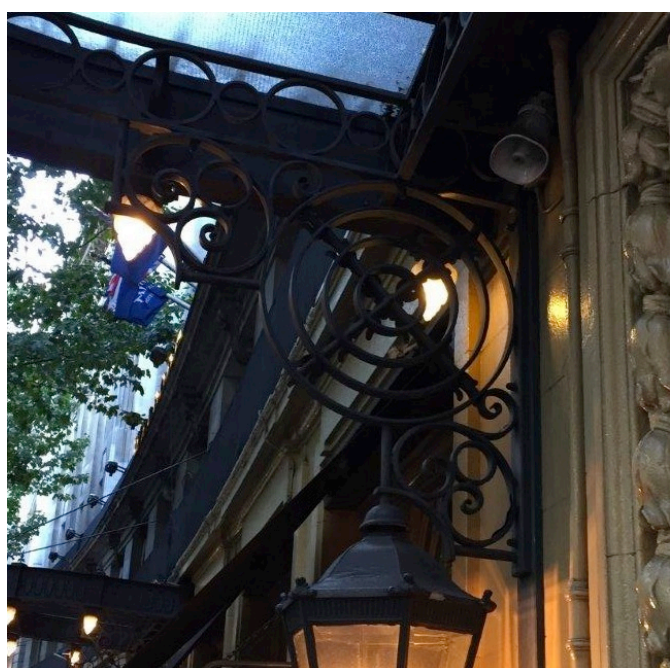
A Detail A  
Fluted architrave moulding - first floor chapel window



B Detail B  
Flower motif - first floor chapel window cornice



C Detail C  
Proposed wall lantern with integrated mini spot lights



D Detail D  
Proposed decorative side canopy support

P2	16/03/16	Canopy drainage discharge location and note
P1	01/12/15	Issued for planning
C1	16/10/15	Issued for Construction (canopy extended to 1.2m, text above canopy removed)
I1	29/09/15	Issued for Information

Revisions

PLANNING

**HARPER  
DOWNIE**  
CREATIVE  
ARCHITECTURE

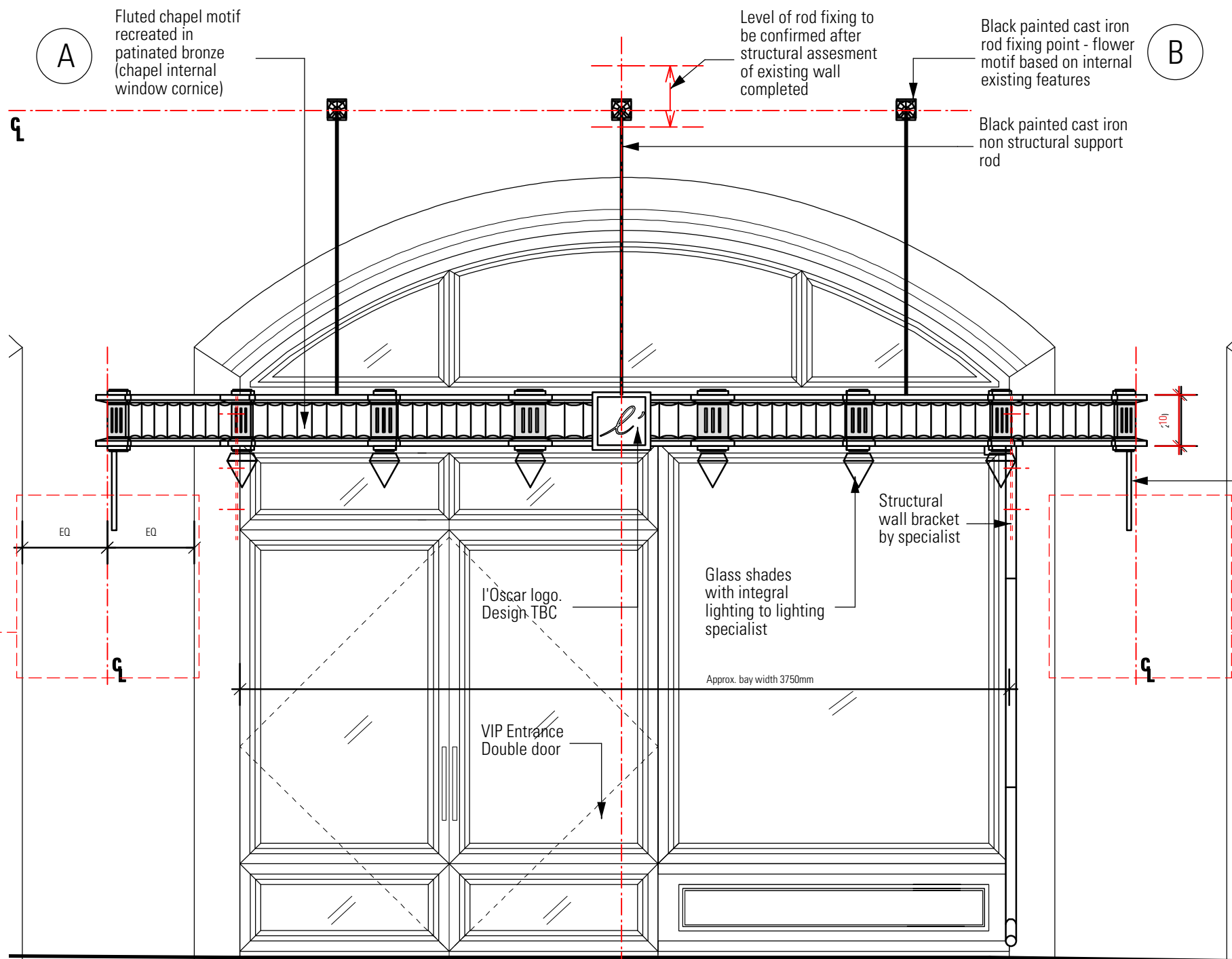
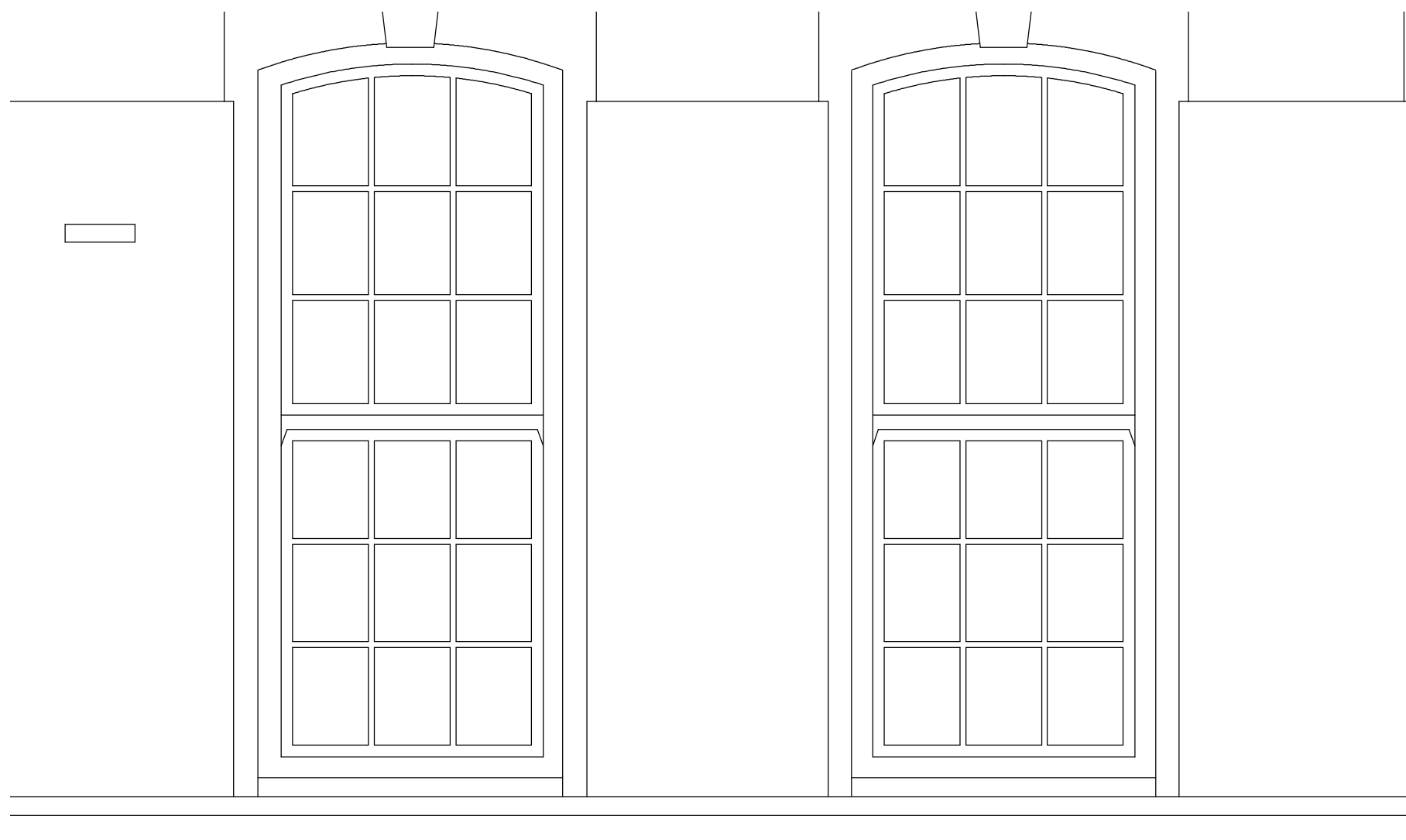
Gate House  
1 St John's Square  
London EC1M 4DH  
  
T +44 20 7490 7674  
studio@harperdownie.com  
www.harperdownie.com

Client  
Havza Ltd

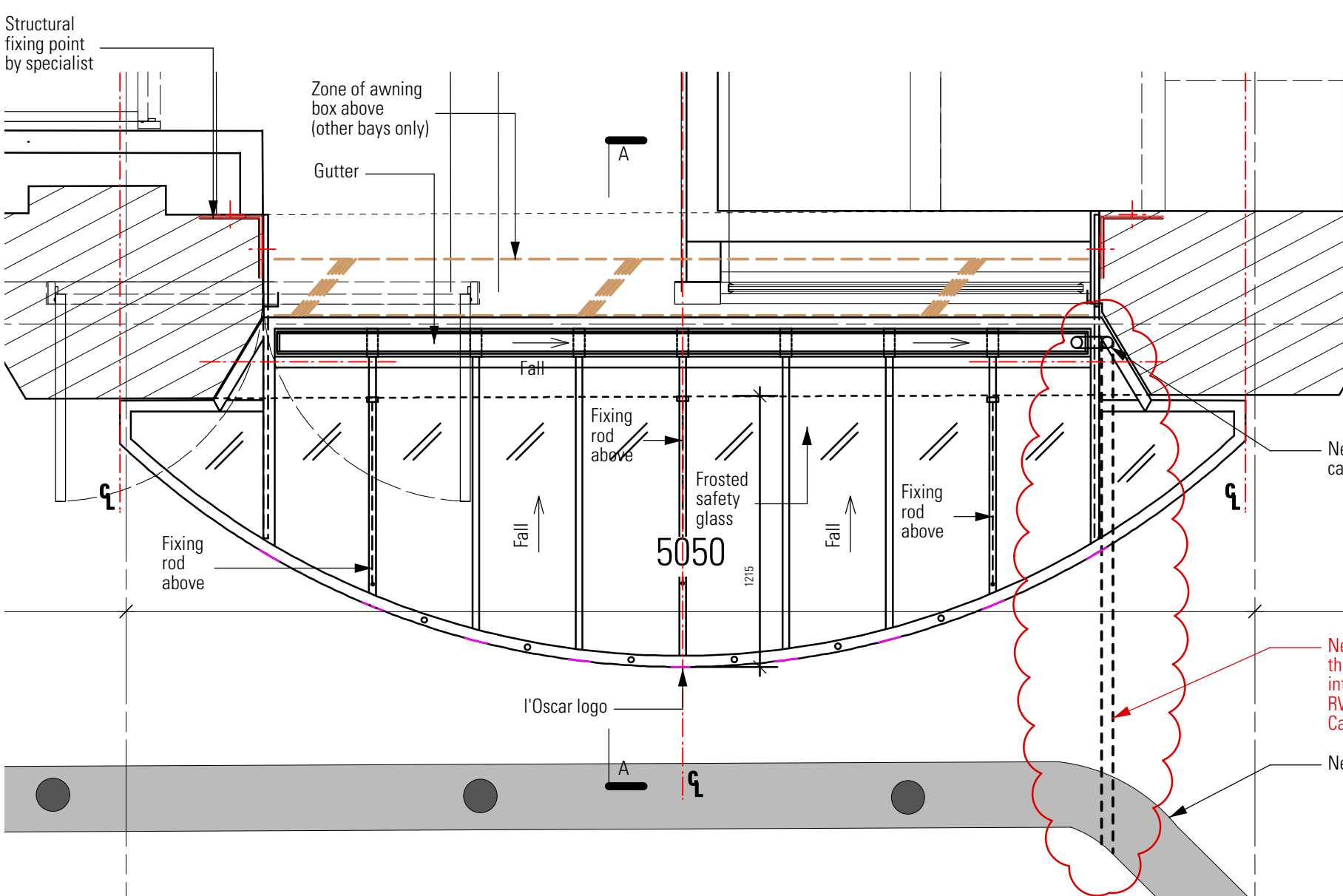
Project  
2-6 Southampton Row

Drawing Title  
Design Intent for Entrance Canopy  
VIP Entrance  
Catton Street

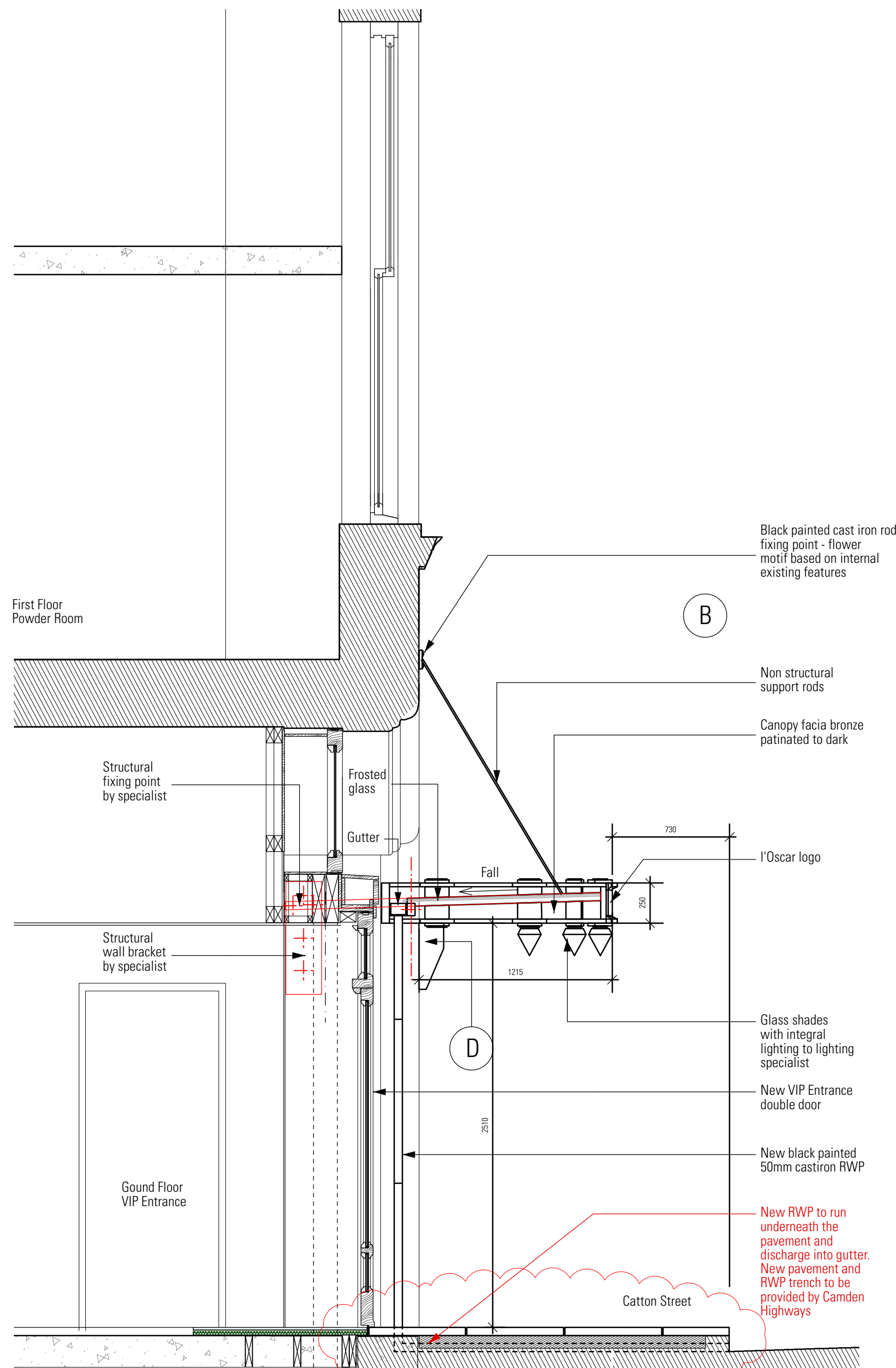
Status	Drawn	Checked
Planning	IG	MM
Scale	Date	
A1 - 1:25, A3 - 1:50	Sept 2015	
Drwg. No.	Revision	
586EW102	P2	



1 Elevation  
1:25@A1, 1:50@A3



3 Plan View Ground Floor  
1:25@A1, 1:50@A3



2 Section A-A  
1:25@A1, 1:50@A3



Photo 01  
Existing Entrance

VIP Entrance  
Catton Street