

# OMD

1-4 NORTH CRESCENT CHENIES STREET, LONDON

MAR 2016



3RD FLOOR: Dan's Office

DWG NO.	DWG TITLE	REVISION
GA.1	<b>PROPOSED GENERAL ARRANGEMENT PLAN</b> - PROPOSED GENERAL LAYOUT	-
KS.1	<b>PROPOSED KEY SCHEDULE PLAN</b> - PROPOSED WALL & FLOOR FINISHES, - PROPOSED FLOOR AREAS - INTERNAL ELEVATIONS KEY - PROPOSED SPECIFICATION NOTES	-
LLS.1	<b>PROPOSED <u>DESIGN INTENT</u> LOW LEVEL SERVICES PLAN</b> - PROPOSED POWER SUPPLY - PROPOSED DATA SUPPLY - PROPOSED DRAINAGE RUNS - PROPOSED SPECIFICATION QUANTITIES AND NOTES	-
RCP.1	<b>PROPOSED <u>DESIGN INTENT</u> REFLECTIVE CEILING PLAN</b> - PROPOSED SMOKE DETECTORS - PROPOSED LIGHT FIXTURES - PROPOSED PIR FIXTURES - PROPOSED CEILING HEIGHTS & FINISHES - PROPOSED SPECIFICATION QUANTITIES AND NOTES	-
SO.1	<b>PROPOSED SETTING OUT PLAN</b> - SETTING OUT OF ALL NEW PARTITIONS	-
IE.1	<b>PROPOSED INTERNAL ELEVATIONS</b>	-

**EXISTING STRUCTURE**  
THIS IS A GRADE II LISTED BUILDING.  
ALL ORIGINAL STRUCTURE TO REMAIN.  
ALL EXISTING SECONDARY STRUCTURE TO REMAIN  
WHERE INDICATED AND ANY NEW OPENINGS OR  
DISTURBED EXISTING SURFACES TO BE MADE  
GOOD WHEREVER APPROPRIATE

**SUSPENDED TIMBER CEILING**  
- 2NO. LAYERS AND FIRE LINE PLASTERBOARD WITH  
2.5MM SKIM FINISH, FIXED ON  
- 75MM X 40MM TIMBER JOISTS/BATTENS  
SPANNING THE SHORTER DISTANCE (BETWEEN  
EXISTING MASONRY TO NEW PARTITION OR  
BETWEEN PARTITIONS)  
- ACOUSTIC INSULATION IN BETWEEN JOISTS

- FIRE SEPARATION ABOVE

**INTERNAL WALLS**  
NON-LOAD BEARING PARTITIONS TO CONSIST OF 75  
x 50MM TIMBER STUDS AT 400MM C/CS WITH:  
- INTERMEDIATE HORIZONTAL NOGGINS @  $\frac{1}{3}$  HEIGHT,  
OR 1200MM CENTERS FROM THE GROUND)  
- 75MM MINERAL WOOL (10KG/M2) ACOUSTIC  
SOUNDPROOF INSULATION QUILT TIGHTLY PACKED  
IN ALL VOIDS WITHIN TIMBER STUD WORK  
- FACING OF 12.5 MM PLASTERBOARD, TAPED AND  
JOINTED, COMPLETE WITH BEADS AND STOPS,  
WITH 2.5MM SKIM FINISH TO BOTH SIDES.  
- 100 X 10MM FLAT EDGE PROFILE SKIRTING  
BOARDS PAINTED WHITE  
- CLIENT TO CONFIRM WHETHER SKIRTINGS ARE TO

BE FACE FIXED OR FLUSH

**DOORS**  
30MIN FIRE DOORS WITH INTUMESCENT STRIPS TO  
THREE SIDES IN FRAME WHERE INDICATED.  
- 1.5 PAIR HINGES TO ALL DOORS  
- LOCKING HANDLES TO MEET BS7950 FOR  
ENHANCED SECURITY PERFORMANCE.

**GLAZING**  
ALL NEW GLAZED PANES TO BE TOUGHENED  
SAFETY GLASS WITH MANIFESTATIONS IN  
ACCORDANCE WITH THE CURRENT BUILDING  
REGULATION REQUIREMENTS.

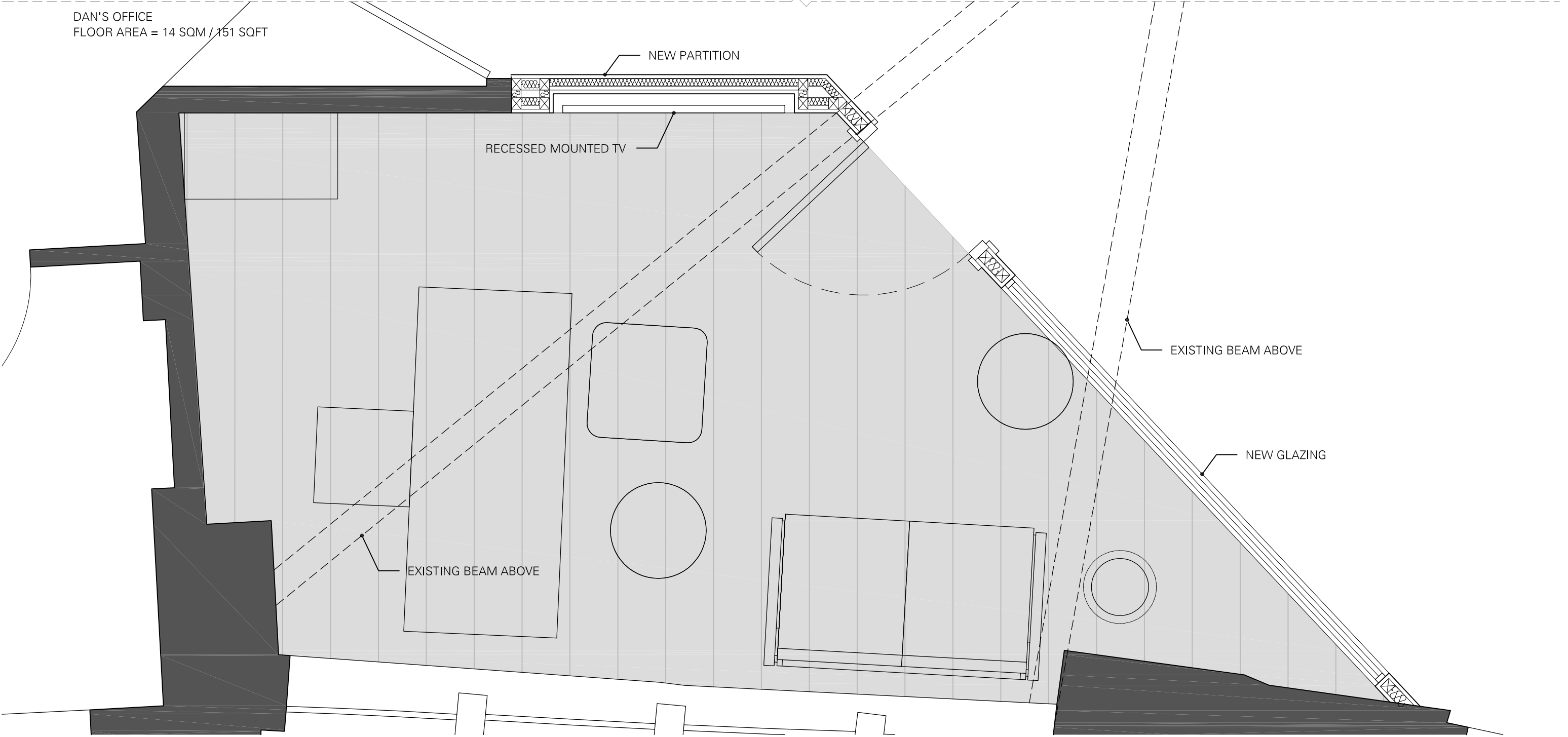
**ELECTRICAL**  
ALL ELECTRICAL WORK TO BE DESIGNED,  
INSTALLED, (INSPECTED, AND TESTED) BY A  
COMPETENT AND REGISTERED ELECTRICIAN AND IN  
ACCORDANCE WITH THE REQUIREMENTS SET OUT  
IN PART P (ELECTRICAL SAFETY) OF THE APPROVED  
DOCUMENTS.

**GENERAL**  
THE CONTRACTOR IS RESPONSIBLE FOR CHECKING  
LEVELS, DIMENSIONS, TOLERANCES AND  
REFERENCES. ANY DISCREPANCIES ARE TO BE  
VERIFIED WITH THE ARCHITECT BEFORE  
PROCEEDING WITH THE WORKS ON SITE OR  
OFF-SITE FABRICATION.  
ALL WORKS ARE TO COMPLY WITH THE CURRENT

BUILDING REGULATIONS AND GOOD BUILDING  
PRACTICE.  
  
THE CONTRACTOR SHALL ALLOW IN HIS PRICE FOR  
ALL DETAILS WHETHER SHOWN ON THE DRAWINGS  
OR NOT, WHICH MAY BE CONSIDERED NECESSARY  
TO ENSURE A NEAT STRUCTURALLY SOUND BUILD.




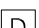
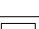
EXISTING STRUCTURE  
TO REMAIN

BREAK LINE




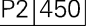
PROJECT TITLE		DRAWING TITLE	OPTION	CLIENT APPROVAL	REVISION										DRAWN BY		DATE		<div>triflecreative*</div> <div>+ 44 20 3002 5491</div> <div>hello@triflecreative.com</div> <div>http://www.triflecreative.com</div>
OMD UK		THIRD FLOOR	VERSION		No			DATE			BY			IKE O.		15 MAR 2016			
INTERNAL WORKSPACE REFURBISHMENT		DAN'S OFFICE											CHECKED BY		JEANYOUNG I.				
SITE		GENERAL ARRANGEMENT											APPROVED BY		1:20@A3				
1-4 NORTH CRESCENT CHENIES STREET, LONDON		PLAN		TENDER									EMMA M.		DRAWING NO.		SHEET NO.		
														GA.01					





ELECTRICAL SCHEDULE	
	TWIN POWER SOCKET
	TWIN DATA SOCKET
	POWER SOCKET: WHITE FACE PLATE
	DATA OUTLET TO CONNECT TO NETWORK/SERVER RACK: WHITE FACEPLATE
	NUMBER OF SOCKETS

SERVICES LAYOUT IS INDICATIVE ONLY  
AND ILLUSTRATES THE DESIGN INTENT

EXAMPLES OF KEY TYPICAL COMBINATIONS:

-  = 2 NO. POWER (P) SOCKETS + 2 NO. DATA (D) OUTLETS
-  = 2 NO. POWER SOCKETS (P) CENTRED AT [450] MM HEIGHT ABOVE FINISHED FLOOR LEVEL

- TYPE 1**
- 
- FLOOR BOX TYPE 1
- 2NO. TWIN POWER SOCKETS
  - 4NO. DATA OUTLETS TO CONNECT TO SERVER RACK
  - 1NO. HDMI + 1NO. VGA + 1NO. USB OUTLET TO TO CONNECT TO WALL MOUNTED TV SCREEN

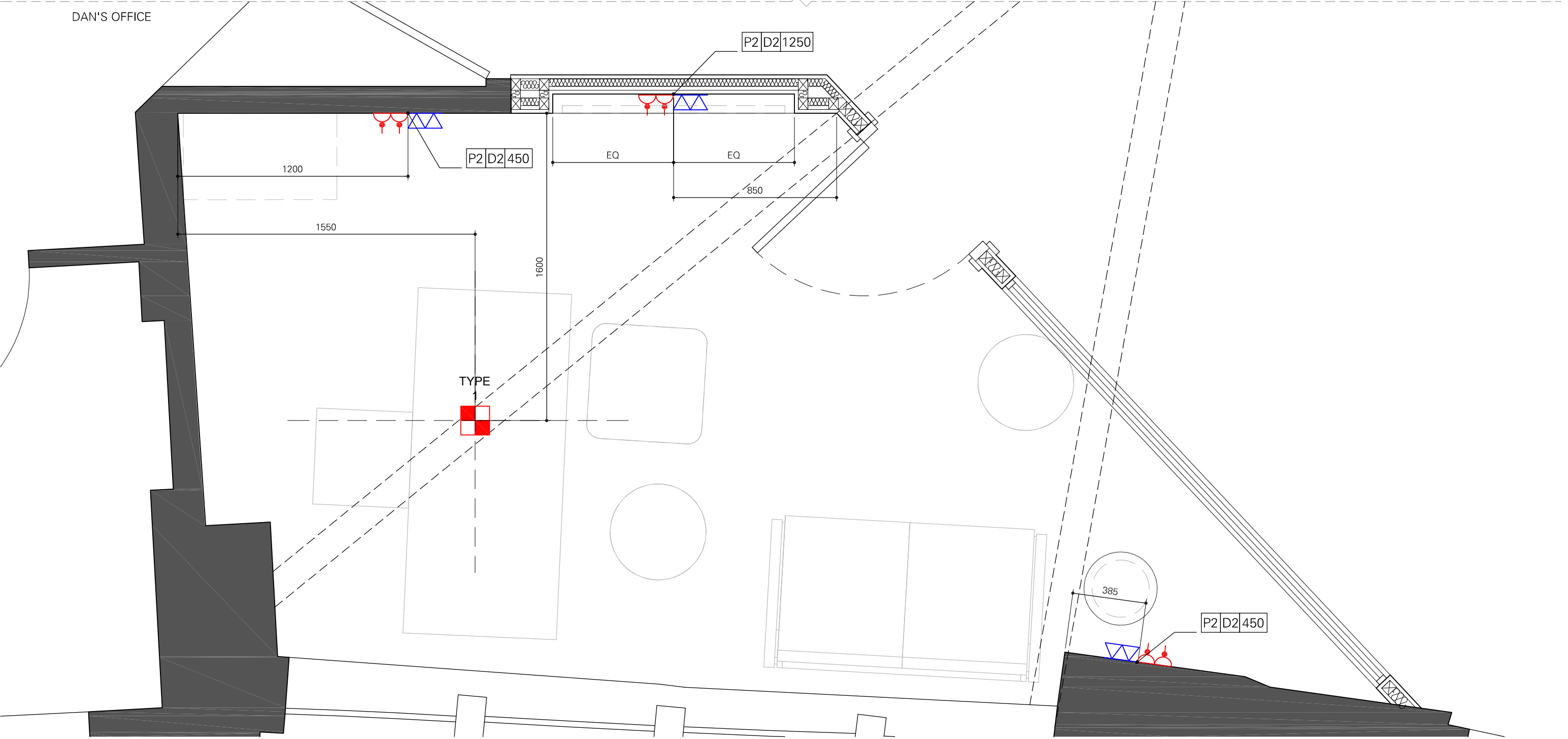
- TYPE 2**
- 
- FLOOR BOX TYPE 2
- 3NO. TWIN POWER SOCKETS

**FIRE/SMOKE SYSTEM**

UNLESS ADVISED OTHERWISE BY FIRE SPECIALIST/CONSULTANT, THE FIRE DETECTION AND FIRE ALARM SYSTEM TO BE CONNECTED TO THE EXISTING SYSTEM AND/OR FITTED WITH A GRADE A CATEGORY LD2 AS DESCRIBED IN BS 5839-6:2004, WITH DETECTORS SITED IN ACCORDANCE WITH THE RECOMMENDATIONS SET OUT IN BS 5839-1:2002 FOR A CATEGORY L2 SYSTEM.

SMOKE AND HEAT DETECTORS SHALL BE POWERED BY PROPRIETARY MAINS WITH BATTERY BACK UP UP TO BS5446 AND PART 3:2000 TO GRADE D CATEGORY LD3 STANDARD.

BREAK LINE



PROJECT TITLE		DRAWING TITLE	OPTION	CLIENT APPROVAL	REVISION										DRAWN BY		DATE		<div>triflecreative*</div> <div>+ 44 20 3002 5491</div> <div>hello@triflecreative.com</div> <div>http://www.triflecreative.com</div>
OMD UK		THIRD FLOOR	VERSION		No			DATE			BY			IKE O.		15 MAR 2016			
INTERNAL WORKSPACE REFURBISHMENT		DAN'S OFFICE											CHECKED BY		JEANYOUNG I.				
SITE		LOW LEVEL SERVICES													1:20@A3				
1-4 NORTH CRESCENT CHENIES STREET, LONDON		PLAN		TENDER									APPROVED BY			EMMA M.			
																	DRAWING NO.	SHEET NO.	
																	LLS.01		



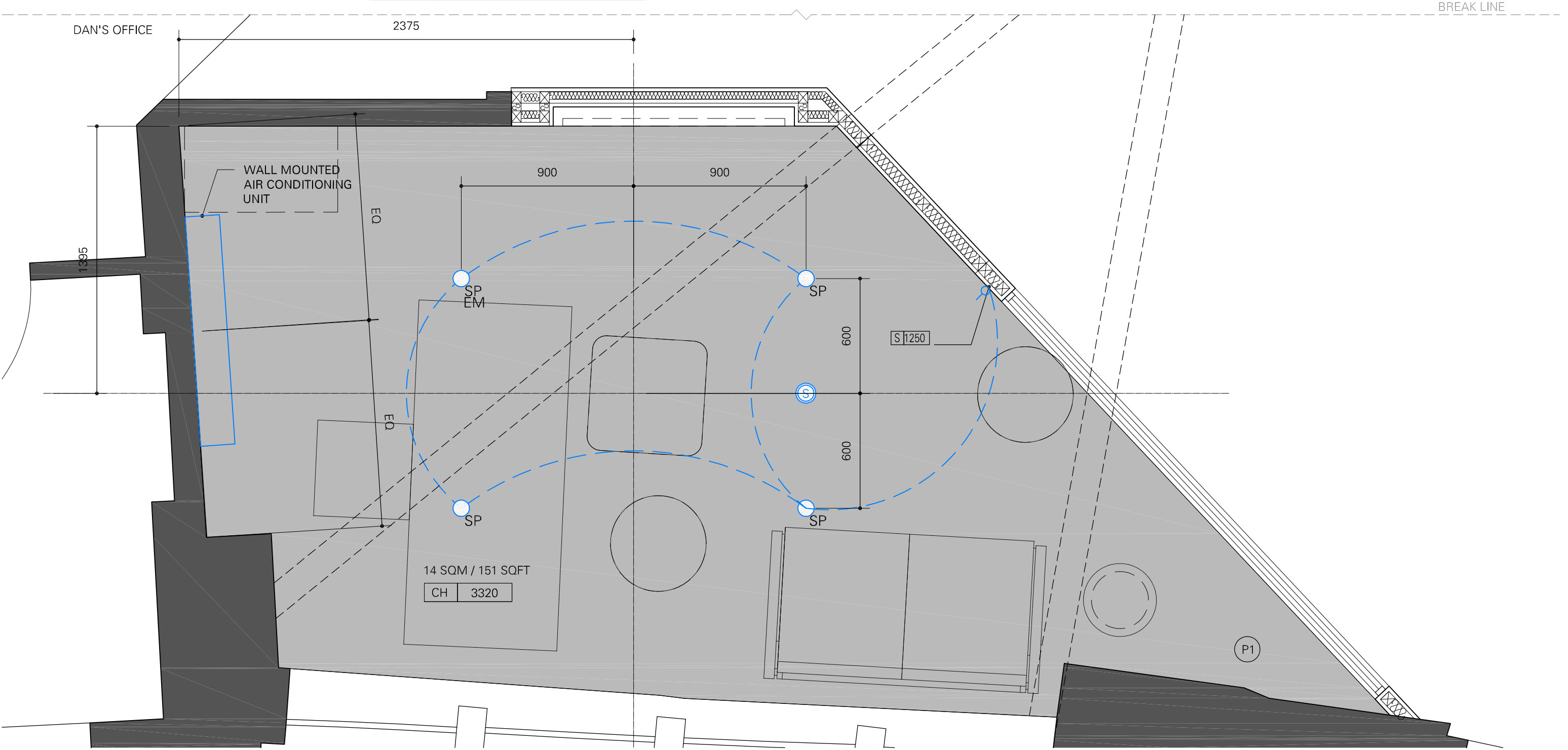
LUMINAIRE KEY		
ITEM	Q	DESCRIPTION
<div><div></div><div>SP</div></div>	4	RECESSED CEILING SPOT LIGHTS - DESIGN, SPECIFICATION, LOCATION TO BE AFFIRMED BY LIGHTING SPECIALIST

LIGHTING LAYOUT IS INDICATIVE ONLY

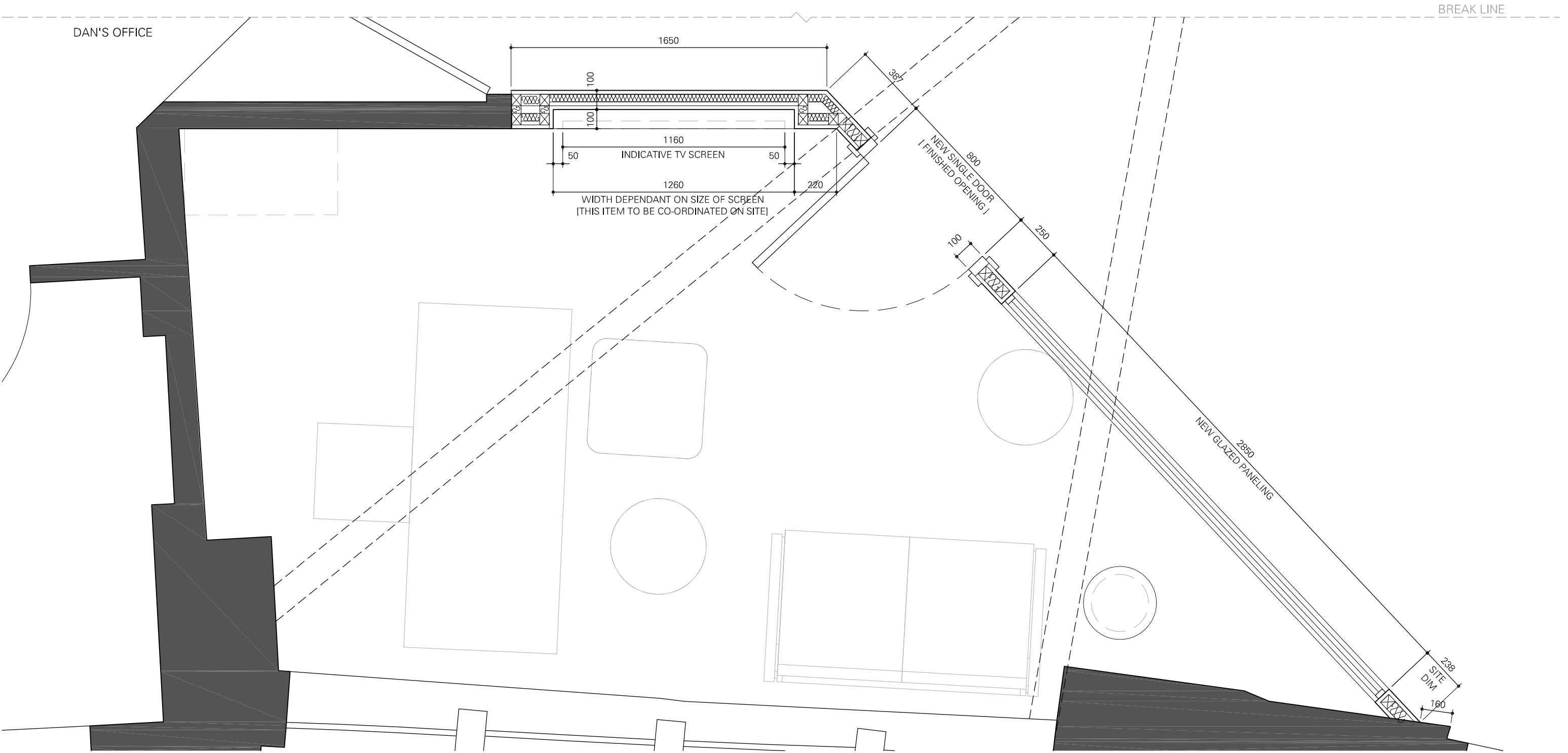
LUMINAIRE KEY		
ITEM	Q	DESCRIPTION
<div><div></div><div>S</div></div>	1	SMOKE/HEAT DETECTOR AND SOUNDER - TO BE SPECIFIED BY FIRE SPECIALIST/CONSULTANT - DESIGN, QUANTITY, AND POSITIONING TO BE VARIED BY SPECIALIST
<div><div></div><div>EM</div></div>	1	EMERGENCY LIGHTING TO THE SATISFACTION OF BUILDING CONTROL

CEILING SCHEDULE	
<div><div></div><div>P1</div></div>	PAINT FINISH, COLOUR: WHITE - RAL9010
<div><div></div></div>	NEW TIMBER OR MF CEILING

LIGHTING SCHEDULE	
<div><div></div></div>	SINGLE WAY LIGHT SWITCH - 1150MM ABOVE FFL



PROJECT TITLE		DRAWING TITLE	OPTION	CLIENT APPROVAL	REVISION										DRAWN BY		DATE		<div>triflecreative*</div> <div>+ 44 20 3002 5491</div> <div>hello@triflecreative.com</div> <div>http://www.triflecreative.com</div>
OMD UK		THIRD FLOOR	VERSION		No			DATE			BY			IKE O.		15 MAR 2016			
INTERNAL WORKSPACE REFURBISHMENT		DAN'S OFFICE											CHECKED BY		SCALE				
SITE		REFLECTED CEILING											JEANYOUNG I.		1:20@A3				
1-4 NORTH CRESCENT CHENIES STREET, LONDON		PLAN	TENDER												APPROVED BY	DRAWING NO.		SHEET NO.	
															EMMA M.	RCP.01			



PROJECT TITLE		DRAWING TITLE		OPTION	CLIENT APPROVAL	REVISION								DRAWN BY		DATE		<div>triflecreative*</div> <div>+ 44 20 3002 5491</div> <div>hello@triflecreative.com</div> <div>http://www.triflecreative.com</div>
OMD UK		THIRD FLOOR		VERSION		No			DATE		BY		IKE O.		15 MAR 2016			
INTERNAL WORKSPACE REFURBISHMENT		DAN'S OFFICE												CHECKED BY		JEANYOUNG I.		
SITE		SETTING OUT PLAN														APPROVED BY		
1-4 NORTH CRESCENT CHENIES STREET, LONDON														EMMA M.		1:20@A3		
				TENDER											DRAWING NO.		SHEET NO.	
															RCP.01			



EXISTING  
STRUCTURE



PROPOSED  
STRUCTURE



EXISTING FABRIC TO REMAIN  
AND TO BE MADE GOOD WHEREVER APPROPRIATE



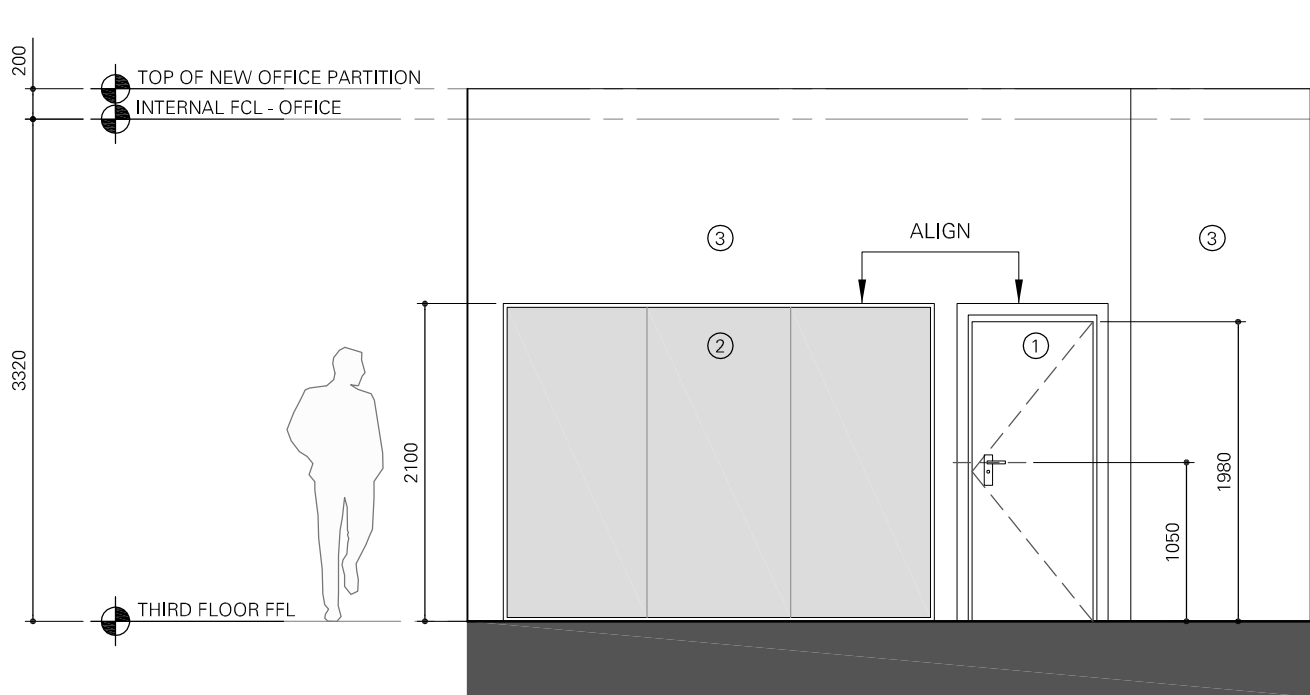
NEW TIMBER DOOR WITH:  
- KEYED LOCK (ON OUTSIDE OF OFFICE)  
- THUMB TURN (ON INSIDE OF OFFICE)  
- 50MM X 20MM ARCHITRAVES (COLOUR: RAL 9005)  
- SELF CLOSERS



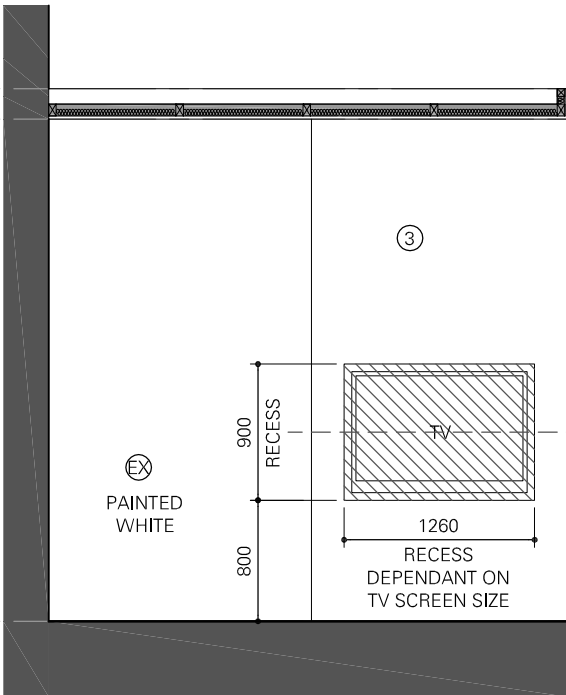
TOUGHENED GLASS PARTITIONING  
WITHIN ANODISED ALUMINIUM FRAME  
FRAME FINISH (POWDER COATED -  
FINISH COLOUR: RAL 9005)



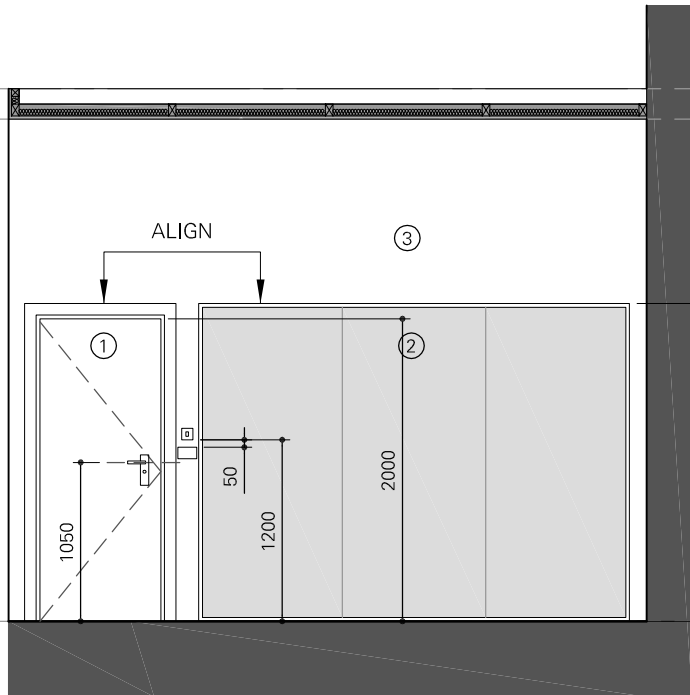
NEW TIMBER STUD PARTITION  
WITH FACES PAINTED WHITE  
- ACOUSTIC INSULATION WITHIN  
PARTITION CAVITY



0 EXTERNAL ELEVATION  
SCALE: 1:50 @A3



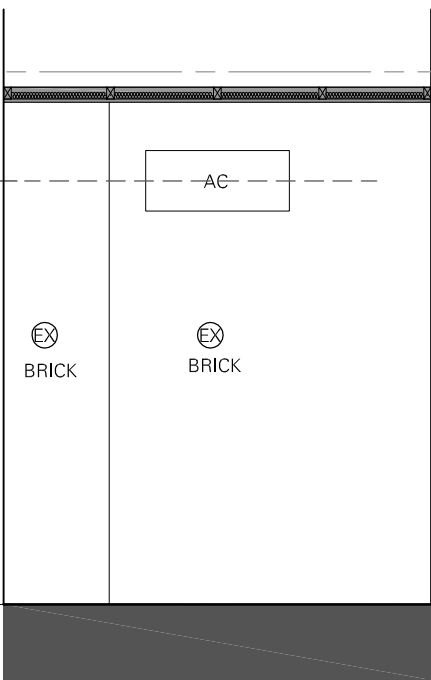
1 DAN'S OFFICE (INSIDE)  
SCALE: 1:50 @A3



2 DAN'S OFFICE (INSIDE)  
SCALE: 1:50 @A3



3 DAN'S OFFICE (INSIDE)  
SCALE: 1:50 @A3



4 DAN'S OFFICE (INSIDE)  
SCALE: 1:50 @A3

PROJECT TITLE  
**OMD UK**  
INTERNAL WORKSPACE REFURBISHMENT  
SITE  
1-4 NORTH CRESCENT CHENIES STREET, LONDON

DRAWING TITLE  
**THIRD FLOOR  
DAN'S OFFICE  
PROPOSED INTERNAL  
ELEVATIONS**

OPTION  
VERSION  
**TENDER**

CLIENT APPROVAL

REVISION  
No DATE BY  
- - -

DRAWN BY  
CHECKED BY  
APPROVED BY  
IKE O.  
JEANYOUNG I.  
EMMA M.

DATE  
SCALE  
DRAWING NO.  
SHEET NO.  
15 MAR 2016  
1:50@A3  
IE.01

**triflecreative\***  
+ 44 20 3002 5491  
hello@triflecreative.com  
http://www.triflecreative.com

# OMD

1-4 NORTH CRESCENT CHENIES STREET, LONDON

MAR 2016



3RD FLOOR: Aki's Office

DWG NO.	DWG TITLE	REVISION
GA.2	<b>PROPOSED GENERAL ARRANGEMENT PLAN</b> - PROPOSED GENERAL LAYOUT	-
KS.2	<b>PROPOSED KEY SCHEDULE PLAN</b> - PROPOSED WALL & FLOOR FINISHES, - PROPOSED FLOOR AREAS - INTERNAL ELEVATIONS KEY - PROPOSED SPECIFICATION NOTES	-
LLS.2	<b>PROPOSED <u>DESIGN INTENT</u> LOW LEVEL SERVICES PLAN</b> - PROPOSED POWER SUPPLY - PROPOSED DATA SUPPLY - PROPOSED DRAINAGE RUNS - PROPOSED SPECIFICATION QUANTITIES AND NOTES	-
RCP.2	<b>PROPOSED <u>DESIGN INTENT</u> REFLECTIVE CEILING PLAN</b> - PROPOSED SMOKE DETECTORS - PROPOSED LIGHT FIXTURES - PROPOSED PIR FIXTURES - PROPOSED CEILING HEIGHTS & FINISHES - PROPOSED SPECIFICATION QUANTITIES AND NOTES	-
SO.2	<b>PROPOSED SETTING OUT PLAN</b> - SETTING OUT OF ALL NEW PARTITIONS	-
IE.2	<b>PROPOSED INTERNAL ELEVATIONS</b>	-



THIS IS A GRADE II LISTED BUILDING.  
ALL ORIGINAL STRUCTURE TO REMAIN.  
ALL EXISTING SECONDARY STRUCTURE TO REMAIN  
WHERE INDICATED AND ANY NEW OPENINGS OR  
DISTURBED EXISTING SURFACES TO BE MADE  
GOOD WHEREVER APPROPRIATE

- 2NO. LAYERS AND FIRE LINE PLASTERBOARD WITH 2.5MM SKIM FINISH, FIXED ON
- 75MM X 40MM TIMBER JOISTS/BATTENS SPANNING THE SHORTER DISTANCE (BETWEEN EXISTING MASONRY TO NEW PARTITION OR BETWEEN PARTITIONS)
- ACOUSTIC INSULATION IN BETWEEN JOISTS

- INTERMEDIATE HORIZONTAL NOGGINS @  $\frac{1}{3}$  HEIGHT, OR 1200MM CENTERS FROM THE GROUND)
- 75MM MINERAL WOOL (10KG/M2) ACOUSTIC SOUNDPROOF INSULATION QUILT TIGHTLY PACKED IN ALL VOIDS WITHIN TIMBER STUD WORK
- FACING OF 12.5 MM PLASTERBOARD, TAPED AND JOINTED, COMPLETE WITH BEADS AND STOPS, WITH 2.5MM SKIM FINISH TO BOTH SIDES.
- 100 X 10MM FLAT EDGE PROFILE SKIRTING BOARDS PAINTED WHITE
- CLIENT TO CONFIRM WHETHER SKIRTINGS ARE TO

- 1.5 PAIR HINGES TO ALL DOORS
- LOCKING HANDLES TO MEET BS7950 FOR ENHANCED SECURITY PERFORMANCE.

ALL NEW GLAZED PANES TO BE TOUGHENED  
SAFETY GLASS WITH MANIFESTATIONS IN  
ACCORDANCE WITH THE CURRENT BUILDING  
REGULATION REQUIREMENTS.

ALL ELECTRICAL WORK TO BE DESIGNED,  
INSTALLED, (INSPECTED, AND TESTED) BY A  
COMPETENT AND REGISTERED ELECTRICIAN AND IN  
ACCORDANCE WITH THE REQUIREMENTS SET OUT  
IN PART P (ELECTRICAL SAFETY) OF THE APPROVED  
DOCUMENTS.

THE CONTRACTOR IS RESPONSIBLE FOR CHECKING LEVELS, DIMENSIONS, TOLERANCES AND REFERENCES. ANY DISCREPANCIES ARE TO BE VERIFIED WITH THE ARCHITECT BEFORE PROCEEDING WITH THE WORKS ON SITE OR OFF-SITE FABRICATION. ALL WORKS ARE TO COMPLY WITH THE CURRENT

THE CONTRACTOR SHALL ALLOW IN HIS PRICE FOR ALL DETAILS WHETHER SHOWN ON THE DRAWINGS OR NOT, WHICH MAY BE CONSIDERED NECESSARY TO ENSURE A NEAT STRUCTURALLY SOUND BUILD.

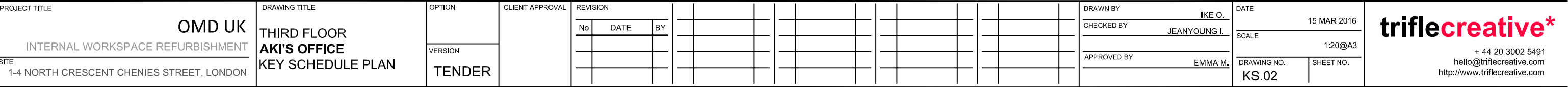




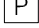

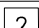
PROJECT TITLE		DRAWING TITLE		OPTION	CLIENT APPROVAL		REVISION				DRAWN BY		DATE		<div>triflecreative*</div> <div>+ 44 20 3002 5491</div> <div>hello@triflecreative.com</div> <div>http://www.triflecreative.com</div>
OMD UK		THIRD FLOOR		VERSION			No				CHECKED BY		15 MAR 2016		
INTERNAL WORKSPACE REFURBISHMENT		AKI'S OFFICE					DATE				JEANYOUNG I.		SCALE		
SITE		GENERAL ARRANGEMENT									APPROVED BY		1:20@A3		
1-4 NORTH CRESCENT CHENIES STREET, LONDON		PLAN									EMMA M.		DRAWING NO.		
				TENDER									GA.02		SHEET NO.

WALL FINISHES SCHEDULE	
EX	EXISTING FINISH TO REMAIN; MADE GOOD WHEREVER APPROPRIATE
P1	PLASTERED WITH PAINT FINISH. COLOUR: WHITE - RAL9010
P2	PLASTERED WITH PAINT FINISH. COLOUR: BLACK - RAL9005

SKIRTINGS	
	- ALL SKIRTING TO BE 100MM (HIGH) X 20MM FLAT PROFILE SKIRTING - FLUSH SKIRTING TO ALL NEW PARTITIONING

FLOOR FINISHES SCHEDULE			
	T1	NEW FLOORING TO PHONE BOOTHS - TO BE CONFIRMED	
	T2	NEW FLOORING TO MAIN OFFICE - TO BE CONFIRMED	



ELECTRICAL SCHEDULE	
	TWIN POWER SOCKET
	TWIN DATA SOCKET
	POWER SOCKET: WHITE FACE PLATE
	DATA OUTLET TO CONNECT TO NETWORK/SERVER RACK: WHITE FACEPLATE
	NUMBER OF SOCKETS

SERVICES LAYOUT IS INDICATIVE ONLY  
AND ILLUSTRATES THE DESIGN INTENT

EXAMPLES OF KEY TYPICAL COMBINATIONS:

P2	D2
----	----

 = 2 NO. POWER (P) SOCKETS + 2 NO. DATA (D) OUTLETS

P2	450
----	-----

 = 2 NO. POWER SOCKETS (P)  
CENTRED AT [450] MM HEIGHT  
ABOVE FINISHED FLOOR LEVEL

TYPE

1



FLOOR BOX TYPE 1

- 2NO. TWIN POWER SOCKETS
- 4NO. DATA OUTLETS TO CONNECT TO SERVER RACK
- 1NO. HDMI + 1NO. VGA + 1NO. USB OUTLET TO TO CONNECT TO WALL MOUNTED TV SCREEN

TYPE

2



## FLOOR BOX TYPE 2

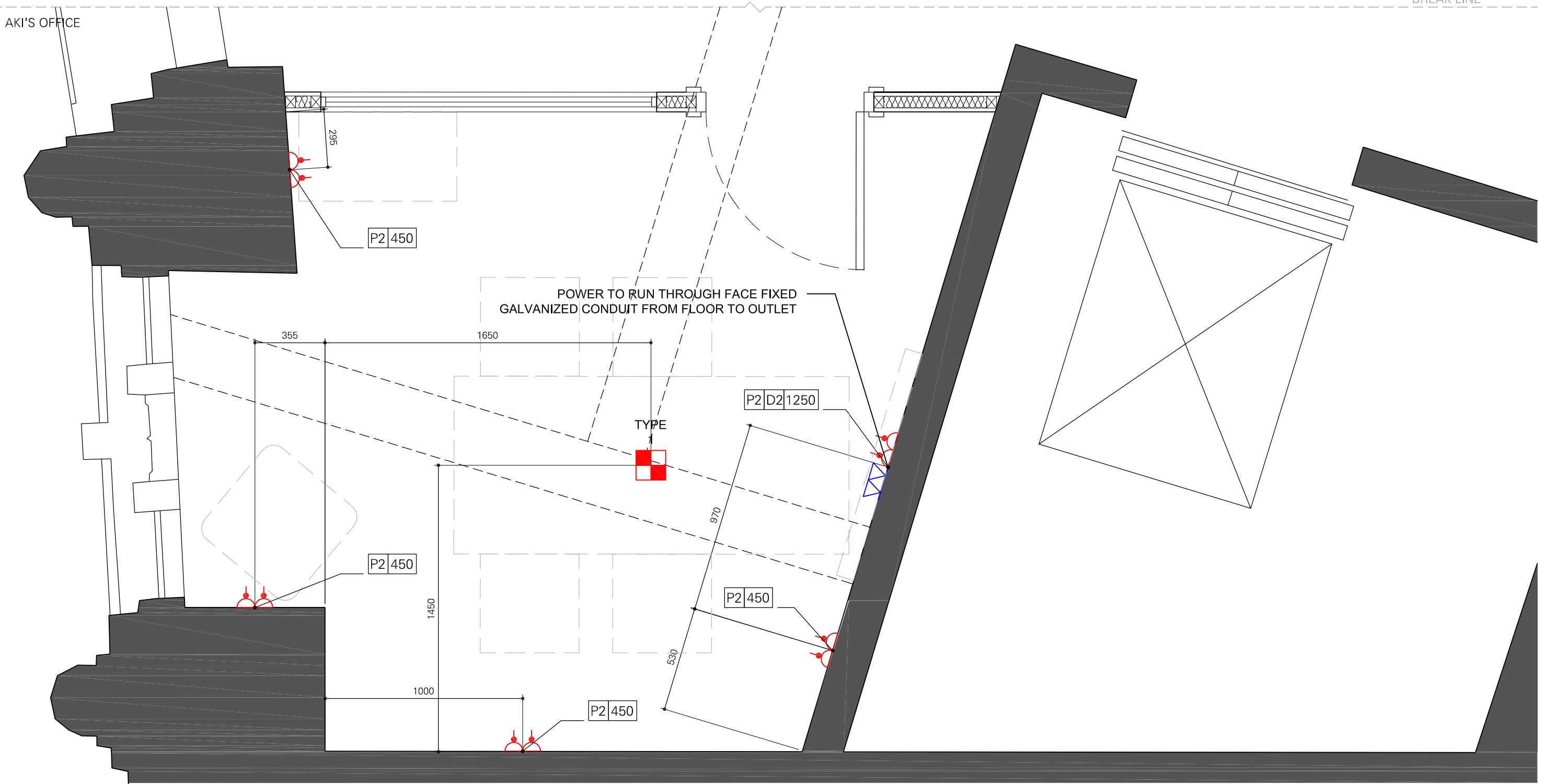
- 3NO. TWIN POWER SOCKETS

## FIRE/SMOKE SYSTEM

UNLESS ADVISED OTHERWISE BY FIRE SPECIALIST/CONSULTANT, THE FIRE DETECTION AND FIRE ALARM SYSTEM TO BE CONNECTED TO THE EXISTING SYSTEM AND/OR FITTED WITH A GRADE A CATEGORY LD2 AS DESCRIBED IN BS 5839-6:2004, WITH DETECTORS SITED IN ACCORDANCE WITH THE RECOMMENDATIONS SET OUT IN BS 5839-1:2002 FOR A CATEGORY L2 SYSTEM.

SMOKE AND HEAT DETECTORS SHALL BE  
POWERED BY PROPRIETARY MAINS WITH  
BATTERY BACK UP UP TO BS5446 AND PART  
3:2000 TO GRADE D CATEGORY LD3 STANDARD.

BREAK LINE



PROJECT TITLE		DRAWING TITLE	OPTION	CLIENT APPROVAL	REVISION								DRAWN BY		DATE		<div>triflecreative*</div> <div>+ 44 20 3002 5491</div> <div>hello@triflecreative.com</div> <div>http://www.triflecreative.com</div>	
OMD UK		THIRD FLOOR			No	DATE	BY									15 MAR 2016		
INTERNAL WORKSPACE REFURBISHMENT		AKI'S OFFICE												CHECKED BY	SCALE			
SITE		LOW LEVEL SERVICES			VERSION									APPROVED BY	1:20@A3			
1-4 NORTH CRESCENT CHENIES STREET, LONDON		PLAN			TENDER									EMMA M.	DRAWING NO. LLS.02			

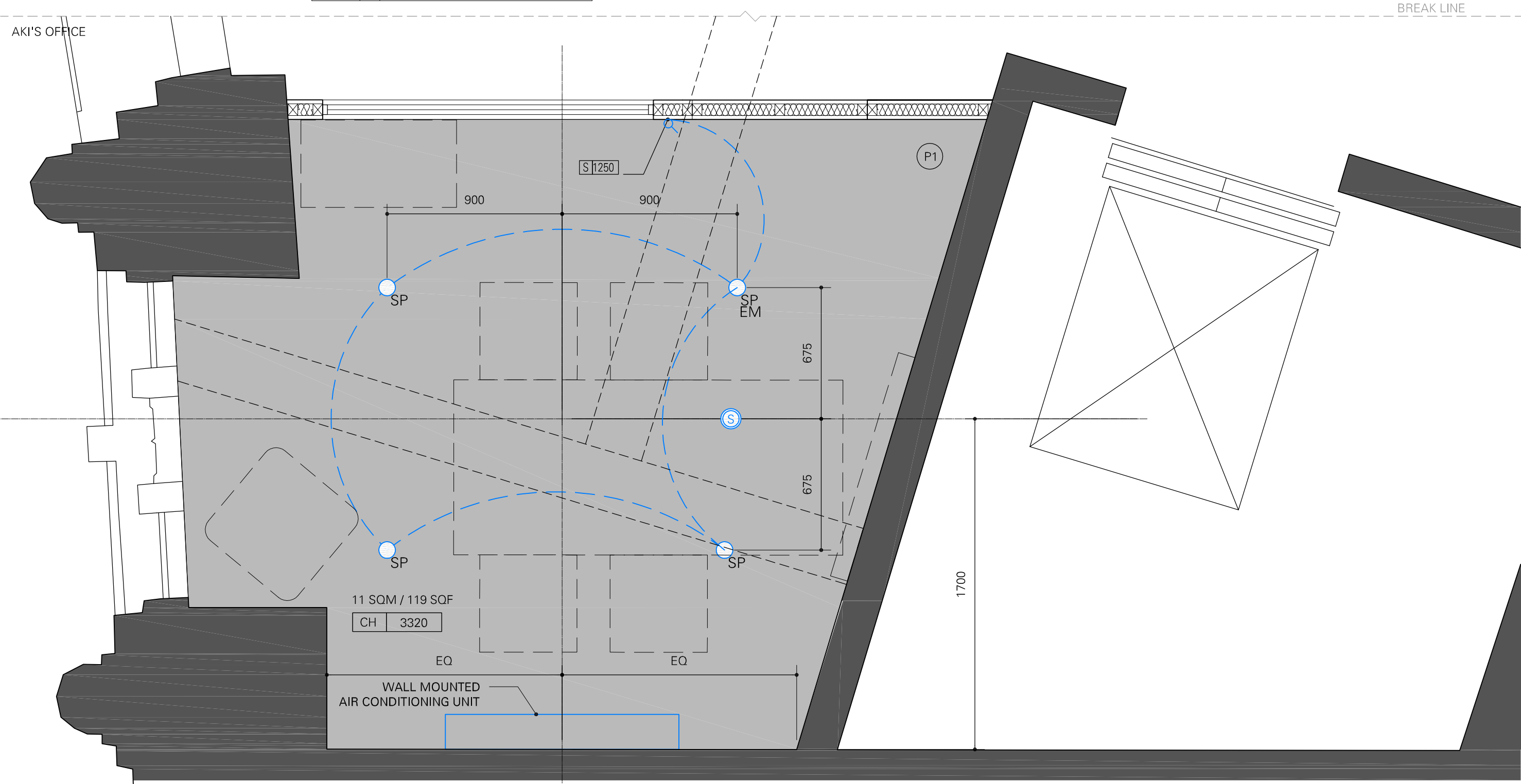
LUMINAIRE KEY		
ITEM	Q	DESCRIPTION
SP	4	RECESSED CEILING SPOT LIGHTS
		- DESIGN, SPECIFICATION, LOCATION TO BE AFFIRMED BY LIGHTING SPECIALIST

LUMINAIRE KEY		
ITEM	Q	DESCRIPTION
S	1	SMOKE/HEAT DETECTOR AND SOUNDER
		- TO BE SPECIFIED BY FIRE SPECIALIST/CONSULTANT
EM	1	EMERGENCY LIGHTING TO THE SATISFACTION OF BUILDING CONTROL

CEILING SCHEDULE	
P1	PAINT FINISH, COLOUR: WHITE - RAL9010
	NEW TIMBER OR MF CEILING

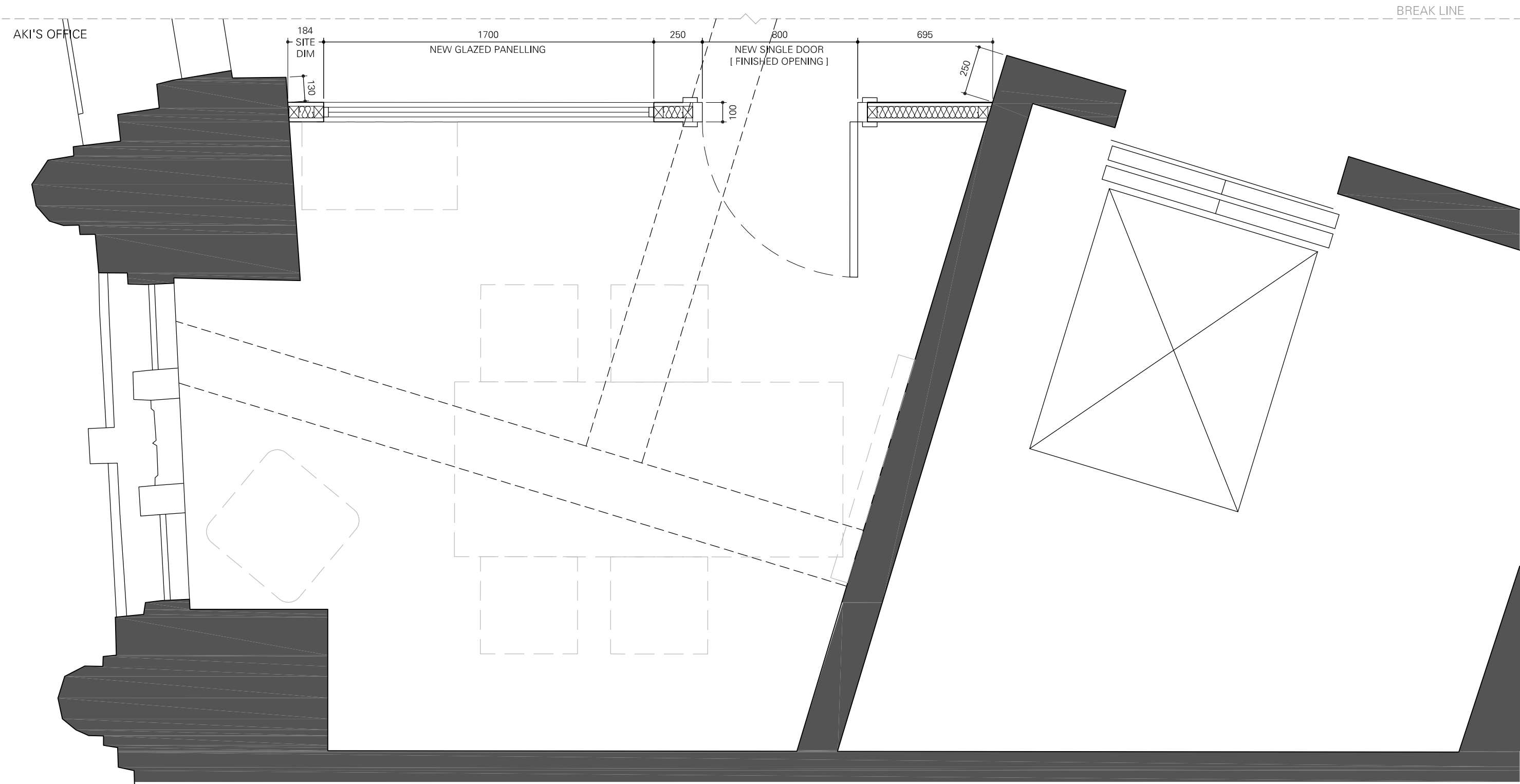
LIGHTING SCHEDULE	
	SINGLE WAY LIGHT SWITCH - 1150MM ABOVE FFL

LIGHTING LAYOUT IS INDICATIVE ONLY

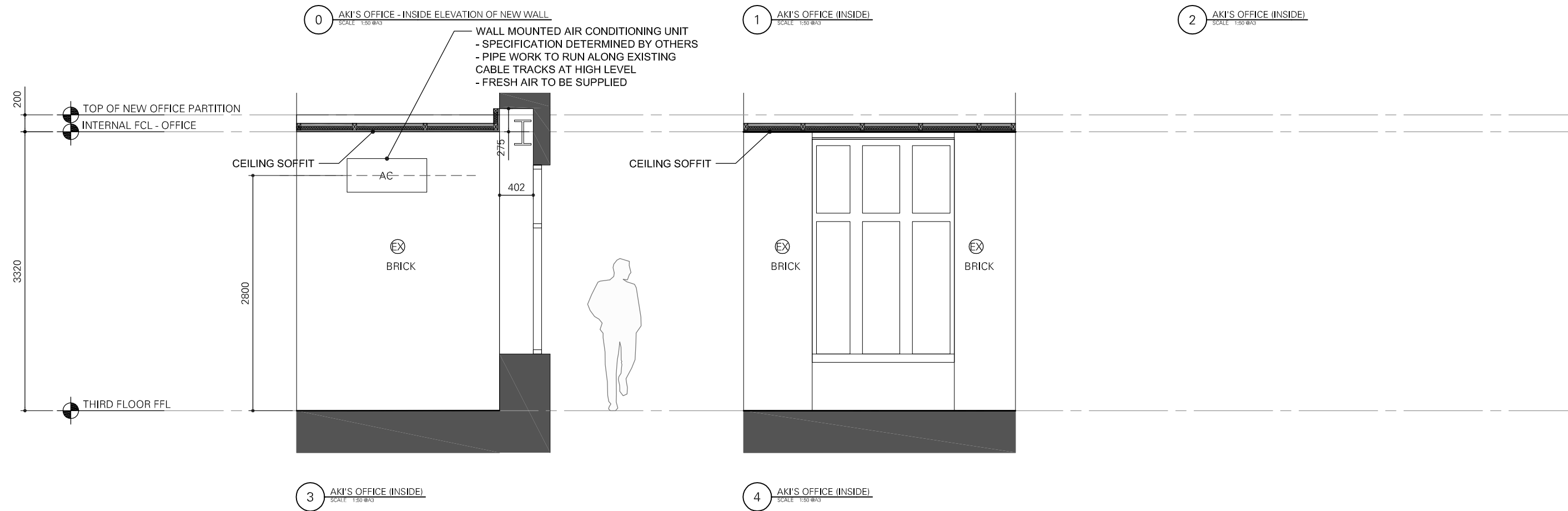
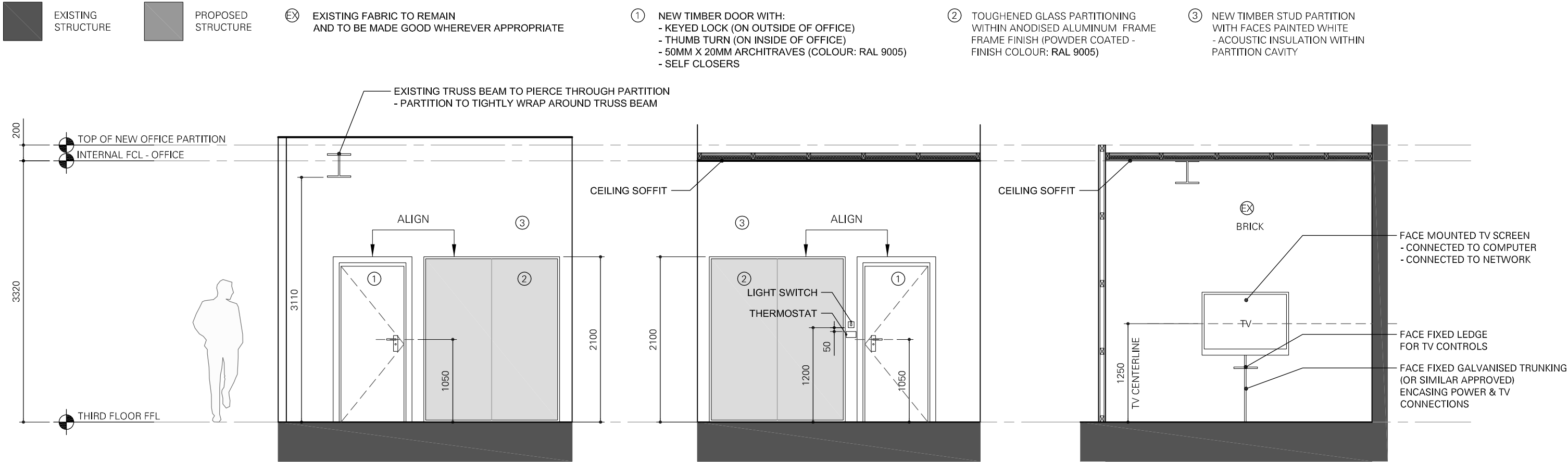


PROJECT TITLE  OMD UK  INTERNAL WORKSPACE REFURBISHMENT  SITE 1-4 NORTH CRESCENT CHENIES STREET, LONDON		DRAWING TITLE  THIRD FLOOR AKI'S OFFICE REFLECTED CEILING PLAN	OPTION	CLIENT APPROVAL	REVISION										DRAWN BY IKE O.		DATE 15 MAR 2016		<div>triflecreative*</div> <div>+ 44 20 3002 5491 hello@triflecreative.com http://www.triflecreative.com</div>		
			VERSION  TENDER		No	DATE	BY													CHECKED BY JEANYOUNG I.	SCALE 1:20@A3
																	APPROVED BY EMMA M.				





PROJECT TITLE		DRAWING TITLE		OPTION	CLIENT APPROVAL	REVISION								DRAWN BY		DATE		<div>triflecreative*</div> <div>+ 44 20 3002 5491</div> <div>hello@triflecreative.com</div> <div>http://www.triflecreative.com</div>
OMD UK		THIRD FLOOR				No	DATE	BY									15 MAR 2016	
INTERNAL WORKSPACE REFURBISHMENT		AKI'S OFFICE															SCALE	
SITE		SETTING OUT PLAN		VERSION													1:20@A3	
1-4 NORTH CRESCENT CHENIES STREET, LONDON				TENDER													DRAWING NO.	
																	SO.02	
																	SHEET NO.	



PROJECT TITLE <div>OMD UK</div> <div>INTERNAL WORKSPACE REFURBISHMENT</div> <div>SITE 1-4 NORTH CRESCENT CHENIES STREET, LONDON</div>		DRAWING TITLE <div>THIRD FLOOR AKI'S OFFICE</div> <div>PROPOSED INTERNAL ELEVATIONS</div>	OPTION <div>VERSION</div> <div>TENDER</div>	CLIENT APPROVAL	REVISION																																																																																																																																																																																																																																																																																																																																																																																																																																					
--	--	--	--	-----------------	----------	--	--	--	--	--	--	--	--	--	--	--	--	--	--	--	--	--	--	--	--	--	--	--	--	--	--	--	--	--	--	--	--	--	--	--	--	--	--	--	--	--	--	--	--	--	--	--	--	--	--	--	--	--	--	--	--	--	--	--	--	--	--	--	--	--	--	--	--	--	--	--	--	--	--	--	--	--	--	--	--	--	--	--	--	--	--	--	--	--	--	--	--	--	--	--	--	--	--	--	--	--	--	--	--	--	--	--	--	--	--	--	--	--	--	--	--	--	--	--	--	--	--	--	--	--	--	--	--	--	--	--	--	--	--	--	--	--	--	--	--	--	--	--	--	--	--	--	--	--	--	--	--	--	--	--	--	--	--	--	--	--	--	--	--	--	--	--	--	--	--	--	--	--	--	--	--	--	--	--	--	--	--	--	--	--	--	--	--	--	--	--	--	--	--	--	--	--	--	--	--	--	--	--	--	--	--	--	--	--	--	--	--	--	--	--	--	--	--	--	--	--	--	--	--	--	--	--	--	--	--	--	--	--	--	--	--	--	--	--	--	--	--	--	--	--	--	--	--	--	--	--	--	--	--	--	--	--	--	--	--	--	--	--	--	--	--	--	--	--	--	--	--	--	--	--	--	--	--	--	--	--	--	--	--	--	--	--	--	--	--	--	--	--	--	--	--	--	--	--	--	--	--	--	--	--	--	--	--	--	--	--	--	--	--	--	--	--	--	--	--	--	--	--	--	--	--	--	--	--	--	--	--	--	--	--	--	--	--	--	--	--	--	--	--	--	--	--	--	--	--	--	--	--	--	--	--	--	--	--	--	--	--	--	--	--	--	--	--	--	--	--	--	--	--	--	--	--	--	--	--	--	--	--	--	--	--	--	--	--	--	--	--	--	--	--	--	--	--	--	--	--	--	--	--	--	--	--	--	--	--	--	--	--	--	--	--	--	--	--	--	--