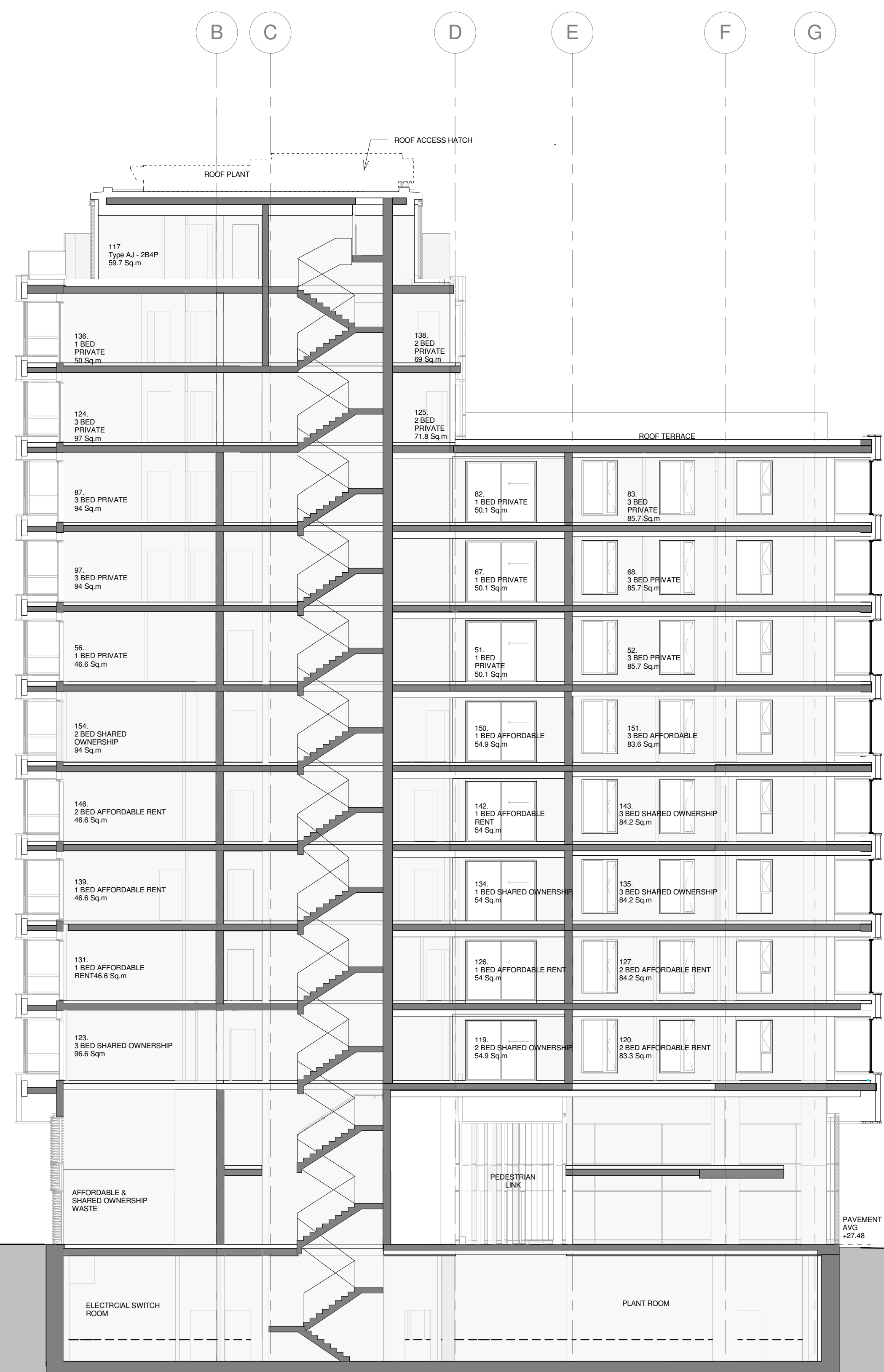
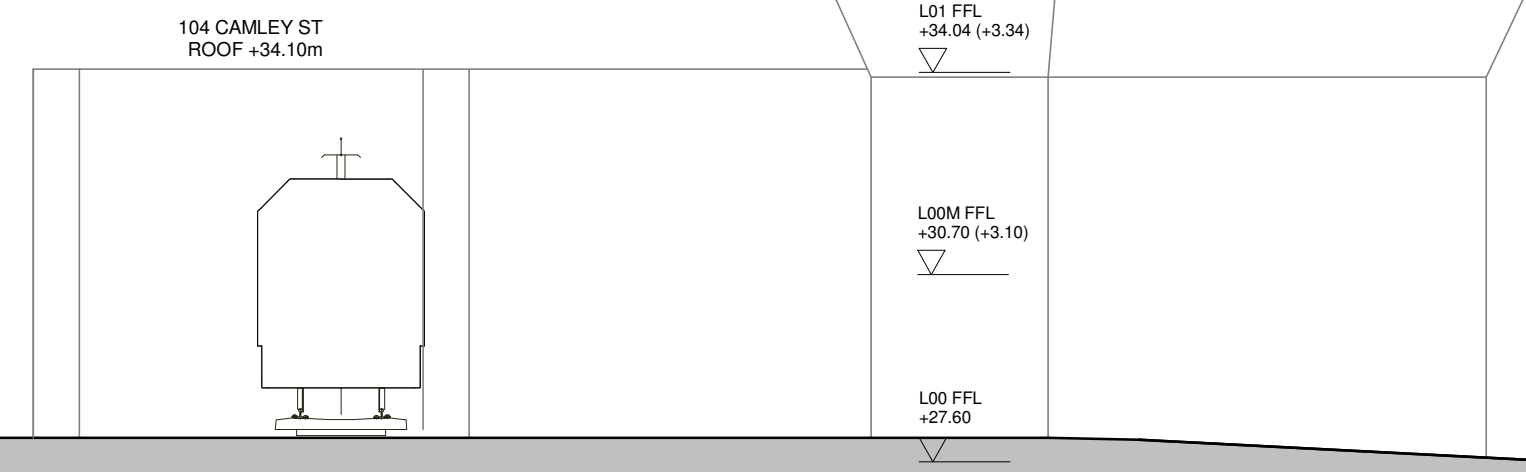


T1 ROOF +76.0m

RF FFL +68.925 (+3.42)	PARAPET LVL +69.075 (L11 FFL + 3.57)
L11 FFL +65.505 (+3.295)	L11 PARAPET LVL +65.635 (L11 FFL + 0.13)
L10 FFL +62.21 (+3.13)	
L09 FFL +59.08 (+3.13)	
L08 FFL +55.95 (+3.13)	
L07 FFL +52.82 (+3.13)	
L06 FFL +49.69 (+3.13)	
L05 FFL +46.56 (+3.13)	
L04 FFL +43.43 (+3.13)	
L03 FFL +40.30 (+3.13)	
L02 FFL +37.17 (+3.13)	SUBSTN ROOF APPROX. +36.52m EAVES APPROX. +35.46m
L01 FFL +34.04 (+3.34)	
L00M FFL +30.70 (+3.10)	
L00 FFL +27.50	
B01 B1 USE FFL +23.86	
B01 PLANT FFL +23.01	



103 CAMLEY ST. ROOF +59.875m G+9 STOREYS

+65.875m G+11 STOREYS

CAMLEY ST ROAD LEVEL AVG +27.27

PAVEMENT AVG +27.48

APPLICATION SITE BOUNDRY

This drawing must not be scaled. Figured dimensions and levels to be used. Any inaccuracies must be notified to the architect. Detail drawings and large scale drawings take precedence over smaller drawings. A1

Rev:	Chk'd:	Rev:
A General Amendments August	20.08.15	
B Issue for Planning	01.09.15	
C Issue for Planning	16.11.15	
D Levels & heights amended. Submitted for planning.	20.04.16	

Chk'd:	Rev:



Chk'd:

PRELIMINARY	
PLANNING	✓
DESIGN	
TENDER	
CONSTRUCTION	

powelldobson
ARCHITECTS

London Office: Sherwood House, Forest Road, Kew, TW9 3BY
Tel: +44 (0)208 3322 831 email: london@powelldobson.com

PDA/Job No:	DRG NO.	REV
14007	A	(05)302
VOLUME	LEVEL	OR TYPE NUMBER

Contract: 102 Camley Street
Regent
Title: Proposed Section CC

Scale: 1 : 125@A1
Date: 11/05/14
Drawn: GB
Checked: MH