



www.pyrolave-architecture.com

Pyrolave Architecture

A selection of unique projects



Product of France

Pyrolave Architecture - The Barn at Windfallwood Common Haslemere Surrey GU27 3BX. 0044 (0)1428 707154 info@pyrolave.com

www.pyrolave-architecture.com

Pyrolave Architecture Australia - 41 Heather Glen Road Yellow Rock NSW 2777 Australia. 0061 (0)2 4740 9704 info@pyrolave.com.au

www.pyrolave.com.au



The natural Volvic lava

Pyrolave products are a natural volcanic lava stone found under top soil and sediment up to 10 metres deep in the Nugere crater at Volvic France.



Contents

Production Process	3 - 8
Rain Screen Facades	9 - 16
Glazed Bricks	17 - 24
Swimming Pools	25 - 32
Hospitality and Leisure	33 - 52
Washrooms	53 - 62
Contemporary Kitchens	63 - 68
Natural Lava Flooring	69 - 80





Production Process

The blocks of lava are identified by the natural fault lines and prised apart by hand before being lifted out.

The to and fro motion of the diamond saws slice the blocks according to the thickness required.

Each piece is then cut and profiled to shape before all tooling marks are removed by hand.

Any surface imperfections are filled before the entire slab is polished down as smooth as glass and the lava receives its first kiln firing to check the sizes and stability of the final order whilst permanently bonding the fillers to the stone.

In the giant spray booths the enamels are applied by hand before the stone is returned to the kiln for its final firing.

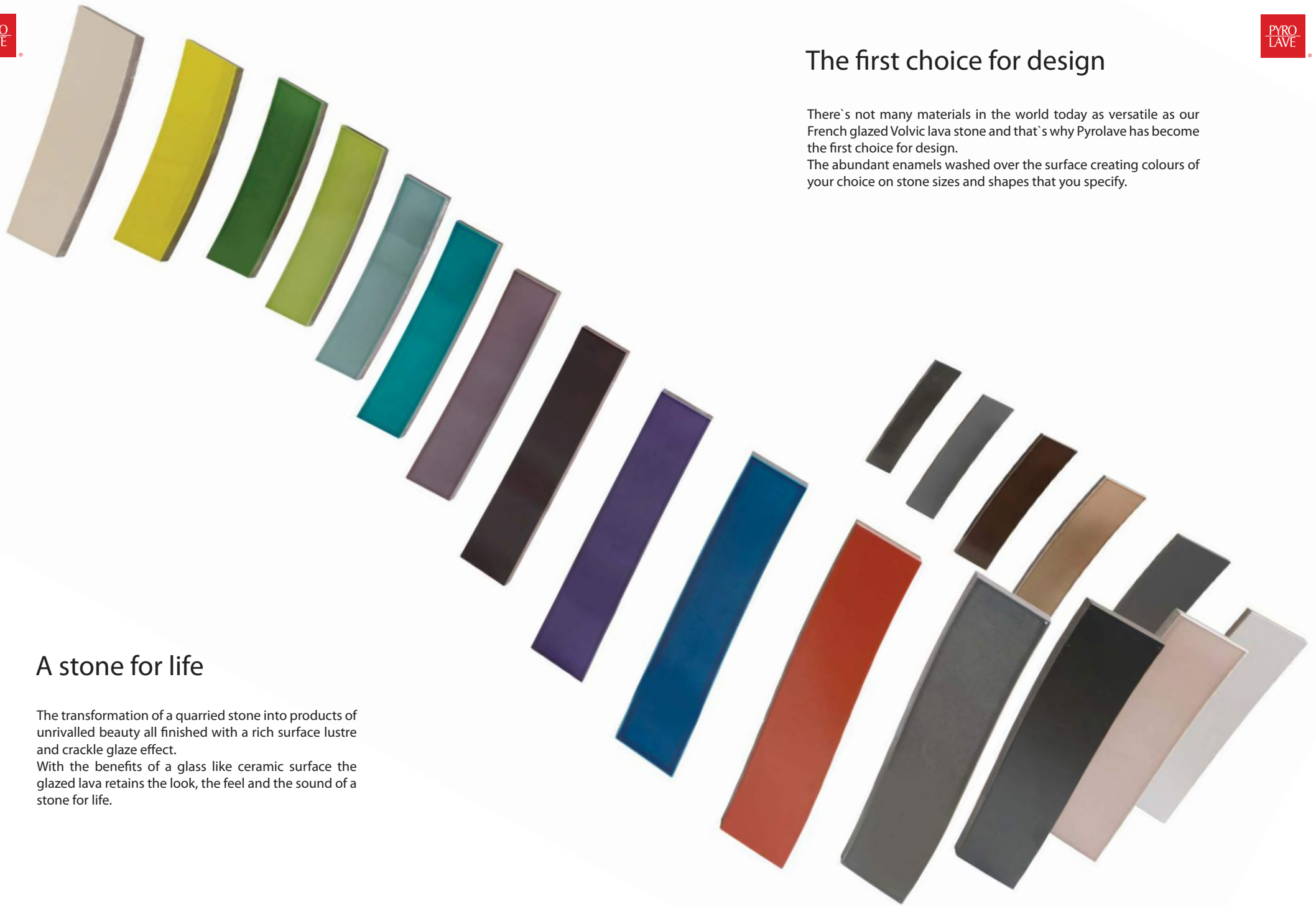


The first choice for design

There's not many materials in the world today as versatile as our French glazed Volvic lava stone and that's why Pyrolave has become the first choice for design. The abundant enamels washed over the surface creating colours of your choice on stone sizes and shapes that you specify.

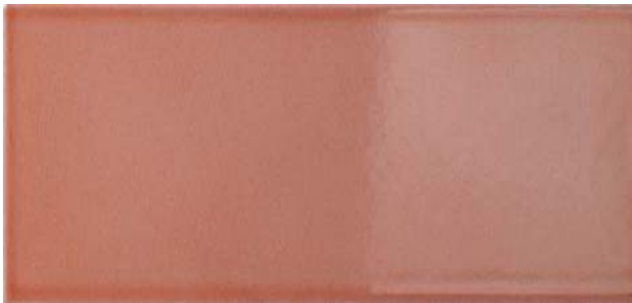
A stone for life

The transformation of a quarried stone into products of unrivalled beauty all finished with a rich surface lustre and crackle glaze effect. With the benefits of a glass like ceramic surface the glazed lava retains the look, the feel and the sound of a stone for life.



Satin matt or brilliant gloss finish

Silk to the touch the satin matt enamels are a perfect finish to create a contemporary feel to your projects. The delicate way that the enamels flow freely over the surface and gracefully envelop the stone is simply stunning.



The brilliant glossy finish with its reflective qualities is a glamorous sparkling surface giving light and energy to every application. This Pyrolave “signature” crackle finish is enhanced by the translucent enamels attracting a play of light across the surface.

Every Pyrolave project involves the collaboration of more than 100 persons within our organisation.

The creation and emotion involved in the manufacture of this bespoke stone makes every piece of Pyrolave individual and a stone to cherish for ever.



A stone to cherish for ever



Rain Screen Cladding Panels

B&Q Head Office Eastleigh UK

Pyrolave cladding panels were chosen by B&Q as feature panels upon their new head-quarters at Eastleigh in Hampshire UK.

We provided more than 200sqm in typical panel sizes of 800 x 500 x 15mm thick in 2 Kingfisher Group corporate colours.

A fibre glass mesh was fixed onto the back of each piece off-site over-lapping 2 light-weight aluminium rails that allowed the panels to be individually hung securely onto the backing structure.





Rain Screen Cladding Panels

B&Q Head Office Eastleigh UK

The unison of such traditional building materials - stone, glass, wood and steel used in an imaginative yet minimal way create a striking contemporary design by BDP Architects London. Featuring Pyrolave panels to the suspended orange box and conference room with flashes of blue to the window columns all contrasted by the wood, emphasis the linear design.



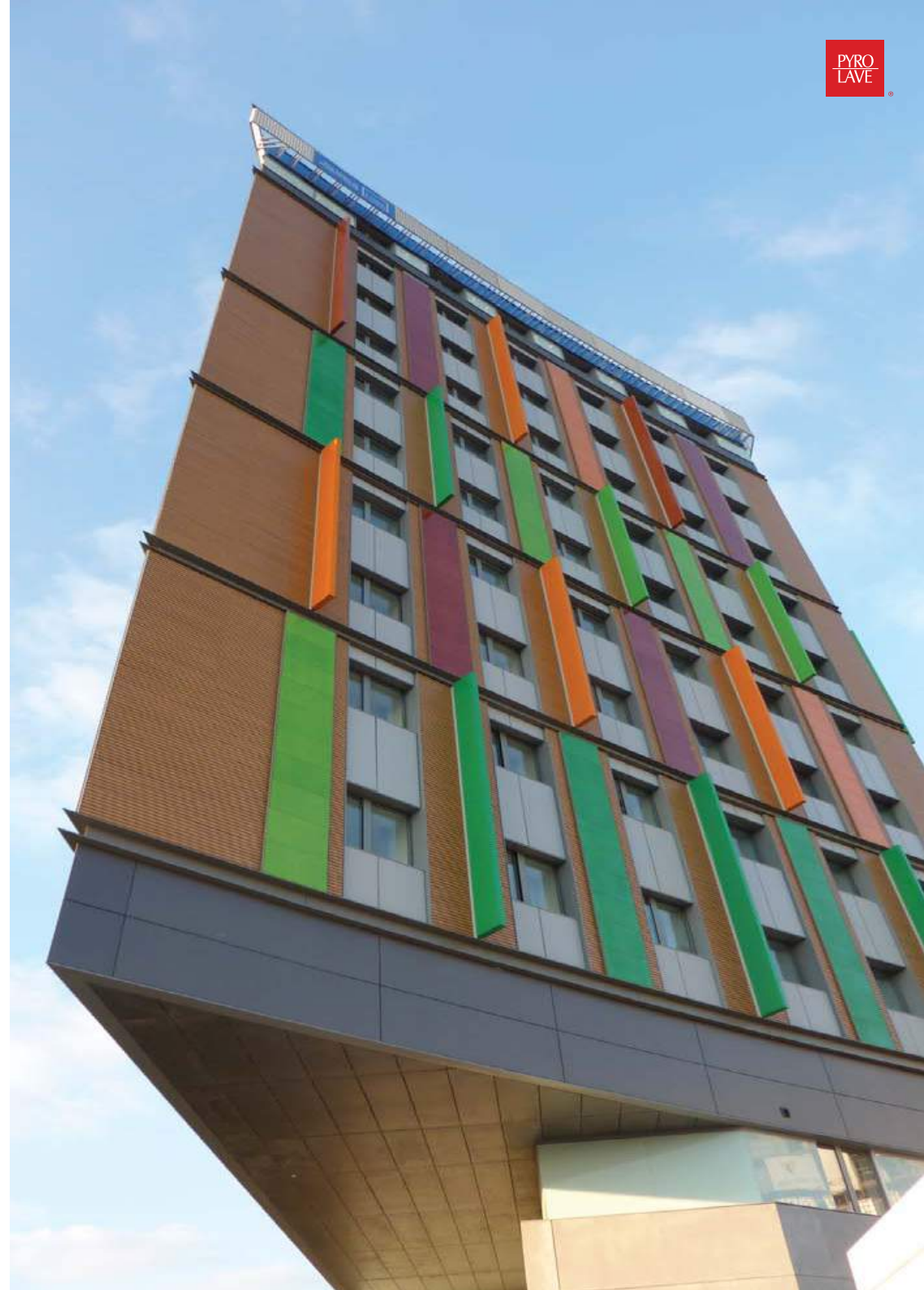
Rain Screen Cladding Panels

UNITE London

This building in London reveals all the architectural qualities of glazed Volvic lava from Pyrolave. The 2 shades of green and brown bring a real vibrancy to this rain-screen facade and are a perfect contrast to the brick and glass.

More than 650sqm of bespoke panels were supplied with a continuous kerf top and bottom to locate onto a fixing rail.

Pyrolave cladding panels are suitable for all extreme climatic conditions being resistant to frost and rain with the UV stable colours remaining clear, bright and clean.





Pyrolave Tiles

Berwick Street Market Soho

Located just above the historic fruit market in the heart of Soho lies this retail and residential development.

The architects introduced Pyrolave tiles in 4 shades of green and achieved a fresh and bright effect to the vertical panels. The vibrancy of the colours will never fade and remain self-cleaning across the climatic cycle.

We supplied 225 sqm of tiles in an equal amount of each colour to create a totally bespoke facade. Our manufacturing techniques permit the supply of short production runs allowing unique design touches.





Glazed Designer Bricks

Pyrolave have breathed new life into this traditional product by bringing to market a superb range of glazed bricks available in any of the dazzling colours associated with every Pyrolave product.

Pick & chose from the RAL or Pantone colour scales & order as many bricks as you like whether its 50 or 5000 & take delivery in 4-6 weeks.

Our glazed bricks encapsulate all the qualities of our products - strength, design, colour & versatility.



Glazed Designer Bricks (& tiles)

A contemporary solution for traditional projects.

This new product line was created by Pyrolave to fulfil an ever increasing demand for "Designer Bricks". The range offers the full scope of traditional brick shapes with both metric and imperial sizes produced to order and supported by bespoke pieces and tiles for unusual requirements.

Consider our glazed bricks for external buildings or internally for design touches.





Glazed Designer Bricks (& tiles)

River Island at The Harlequin Centre Watford UK

The Azur coloured Pyrolave glazed bricks portray all the qualities of our products - a strong material in striking colours at the heart of the design - and for our customer River Island they make the store stand out within a busy mall. The 2 outer columns were built using glazed stretchers and bull-nosed corners whilst the centre column and stall risers were clad in matching brick slips.



Glazed Designer Bricks (& tiles)

River Island at The Shires Leicester UK

The green coloured Pyrolave glazed bricks known as "River Island Green" make a seductive entrance to the fashion boutiques and show a traditional product in a contemporary setting.



Swimming Pools

If you're planning a swimming pool why not consider Pyrolave for a unique bathing experience. Our product is perfect for pool tanks, coping stones and channels when you are looking for something more than standard tiles for discerning clients.



Exercise Pool

Private client Hampshire UK

Take a dip before breakfast in this 15 metre long exercise pool clad in our Emeraude coloured tiles @ 60 x 60cm with matching coping tiles & red speed lane.



Private Pool Europe

A great use of both natural and glazed lava stone create an enticing pool and jacuzzi for this European client's villa.



Soho House Berlin

An eloquent infinity pool on the roof terrace at Soho House Berlin continues the understated luxury of this prestigious building.

Pyrolave provided 140sqm of tiles in a mixture of regular and bespoke sizes to simplify installation.



Hospitality and Leisure

Pyrolave products are an inspired choice for all hospitality and leisure sites. The material gives you the designer the most versatile tool providing size, shape and colour with an aesthetically pleasing and resistant glazed finish for every scheme.





Fortnum and Mason Piccadilly London

The Diamond Jubilee bar on the 4th floor at Fortnum and Mason Piccadilly London. This stunning regal design is topped with Pyrolave bar-counters in our brilliant antique white crackle finish.





The Waiting Room at the Crown Melbourne Australia

A stunning yet simple design has made this elegant monolithic bar an inviting place to relax and un-wind. The enormous slabs up to 150cm long form both the bar counter and risers with a floor strip to catch any drips and protect the carpet.





Bellamys of Mayfair London

Our bar counters adorn the most fashionable sites across the world being the perfect material for designers to link colour schemes and styles.

The unique qualities of Pyrolave glazed lava stone sits comfortably within every interior design from classic to contemporary.

We offer bar counters from 30 to 80mm thick with an extensive range of different edge profiles.



Met Bar Park Lane London

This amazing brilliant black Pyrolave bar counter stretches and turns for more than 10 metres starting at 150cm wide but narrowing down to just 25cm giving a great perspective view and movement in this famous London bar.



Cafe PHO

The finest Vietnamese street food is available at Cafe PHO. The striking red counters in our Vermillion colour encapsulate the spirit of the food and culture in this engaging restaurant.



Courtesy Sink

Nandos Restaurants UK

The Nandos chain of restaurants wanted to provide their customers with a convenient and attractive sink to rinse their hands during their meal. They chose one of our massive carved basins in a vibrant Abricot colour that both compliments and features within the restaurant design.



Runnymede hotel and spa Windsor UK

A soft and unusual colour palette for this restaurant at the Runnymede where more than 50 Pyrolave tables in various shapes and sizes offer the customers a cool place to dine.

Each table has a stainless steel tray base to protect the edges when assembled together for group dining.



Occasional Drinks

The Waiting Room at The Crown Melbourne

A selection of elliptical shaped tables in our ivoire colour provide a tranquil setting for after dinner drinks in this luxurious hotel.



Drinks on the terrace

Our tables can be placed outside and left all year round being resistant to sun, rain and frost. These cafe style tables are 70cm diameter for personal drinks and can be supplied up to 130cm diameter for parties of 4 or more.



Washrooms

Our washroom products include vanity troughs, basins, counters and tiles. The product is robust enough for continual use in commercial sites yet retains a delicate and personalised feel more associated with home.



Washoom

carved from a single block of stone

A truly massive vanity trough carved from a solid block @ 150 x 40 x 20cm and finished in our Citron Vert colour.



Citron Vert

Pyrolave colour range



Washroom

carved from a single block of stone

A popular contemporary choice this monolithic piece epitomises clean simple lines resisting the need for further embellishment.

These massive solid pieces of stone create a tranquil ambience in the bathroom being soft to the eye but strong to the touch.

The subtle sloping of the base allows the water to disperse freely. This model is available with additional tap holes and an optional overflow system (not shown) and will support wall mounted taps if preferred.



Parchemin

Pyrolave colour range

Washroom

carved from a single block of stone

This dramatic top has been created from a block at just 10cm thick giving a very shallow yet stylish basin of sleek appearance. An ideal model for hospitality and leisure sites for occasional hand rinsing and light use.

The inverted underside is perfect for placing onto a designer base unit or chrome wall mounted brackets and gives a particular look if fixed away from the wall.

The model shown is for wall mounted taps pressure reduced to prevent splashes but will also accommodate surface mounted sets with an open or closed waste.



Daffodil

Pyrolave colour range



Washroom

carved from a single block of stone

This hand finished curvaceous vanity top has been created from a block 10cm thick. The attractive and reflective surface in this stunning colour is an ideal centre piece for corporate washrooms.

We suggest using wall mounted taps in a chrome finish to match the unusual open slot drain which can also be supplied with the unit.

The generous proportions of the vanity top (up to 150cm long) portrays an image of design, luxury and style and a pleasure to use.



Violine

Pyrolave colour range





Kitchens for contemporary life

Malibu CA.

The simple design touches in this Malibu home are almost whimsical in the creation of dramatic sculptural shapes.





Kitchens for contemporary life

Malibu CA.

Iconic & fluid styling on these 2 elegant ying-yang stations. At 4 metres long (each made in 2 equal parts) these powerful pieces combine soft flowing lines with a monotone palette to create an individual and easy going design.



Kitchens for contemporary life

Delightful Pyrolave worktops in a crisp and clean duck egg blue featuring 2 sets of drainage ribs set into a recessed surround and neatly capped off with low level upstands.



honed (adouci)



brushed (brosse)



aged (vieilli)



Natural Volvic lava stone for contemporary life

Introducing Pyrolave "mais au naturel" - our Volvic lava stone but without the enamel as a natural stone.

We offer all typical stone finishes but here we illustrate the 3 most popular effects being honed (adouci) brushed (brosse) or aged (vieilli).

The Pyrolave natural lava is cut to all common tile shapes and sizes up to 120 x 90cm and is suitable for commercial and domestic flooring both inside or out.

The featured floor on the opposite page in a chequer board of honed and brushed effects, shows the extent of the shade variation, irregular markings and holes to expect upon every piece of natural Volvic lava.

oui, c'est Pyrolave
...mais au naturel!



Chequer board effect of brosse and adouci



Adouci (honed)



Brosse (brushed)



Boucharde (bush hammered)



Egrise



Polie (polished)



Rectifier



Sable (sanded)



Vieilli (aged)

The natural Volvic lava

The choice of 8 different stone finishes provides an effect for every application. Choose natural Volvic lava for inside or outside on domestic and commercial projects.

Pyrolave natural Volvic lava stone is a great choice for introducing subtle flooring through natural colours and textures.

The strong silent look provides a perfect neutral back-drop enhancing all other colours in the room.





The stylish Adouci finish (honed) is cool to look at yet a warm and welcome addition to any home whether your taste is country or city chic.



The brushed effect (brosse) has a very subtle textured finish that allows the natural and inherent features of the lava to blend into the over-all flooring which once again provides a striking neutral contrast to the richness of the furnishings.



The subtle hues and texture of the un-glazed lava provides a silent but interesting flooring for projects where natural and sustainable finishes are specified.

Taken straight from the quarry and polished, honed, brushed or abraded the simplicity of style and easy going colours make the perfect surface for fashion shops, hospitality and leisure or at home being a flooring that will flow from within the house out into the garden.



We are an international company completing more than 300 bespoke projects each year in Europe, Australia, the Middle East and America - where the flair and ingenuity of designers and architects continually push the boundaries of the stone every day.

We respond with an ability to understand the schemes and embrace the designs through to fruition applying our technical knowledge and organisation through our experienced team of more than 100 craftsmen.

Every Pyrolave project large or small involves the collaboration of every person in the chain from the customer and factory through to delivery and installation to create projects of breathtaking beauty that are unique in the world today.

A cool, chic and sophisticated stone with a personal touch and a little bit of attitude