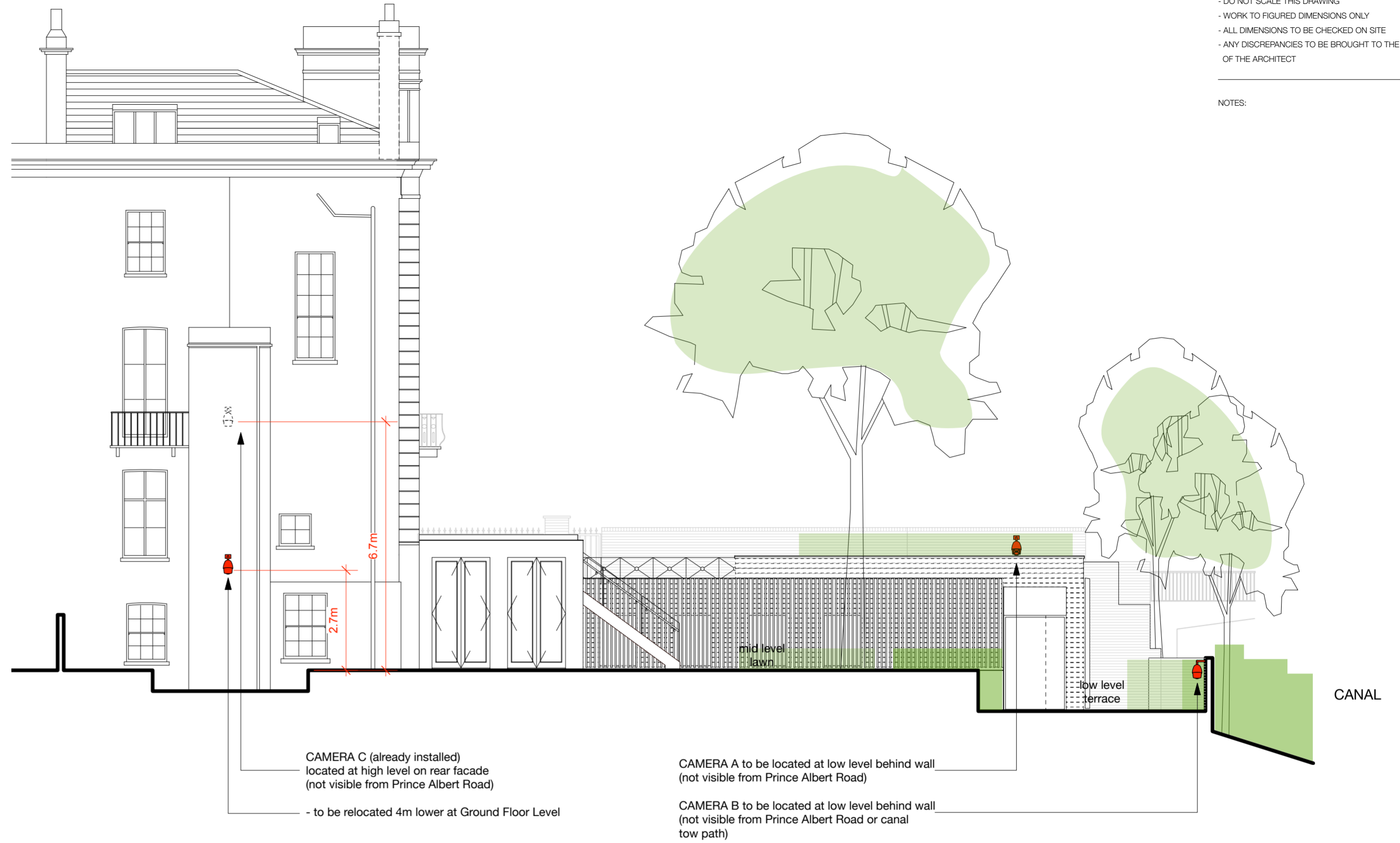


- DO NOT SCALE THIS DRAWING
 - WORK TO FIGURED DIMENSIONS ONLY
 - ALL DIMENSIONS TO BE CHECKED ON SITE
 - ANY DISCREPANCIES TO BE BROUGHT TO THE ATTENTION OF THE ARCHITECT

NOTES:

01 Section B-B



CAMERA C (already installed)
 located at high level on rear facade
 (not visible from Prince Albert Road)
 - to be relocated 4m lower at Ground Floor Level

CAMERA A to be located at low level behind wall
 (not visible from Prince Albert Road)

CAMERA B to be located at low level behind wall
 (not visible from Prince Albert Road or canal
 tow path)

CAMERA C
 (already installed)
 located at high level on
 rear facade (not visible
 from Prince Albert Road)
 - to be relocated 4m
 lower at Ground Floor
 Level

CAMERA A to be located at low level behind wall
 (not visible from Prince Albert Road)

PRINCE
 ALBERT
 ROAD

02 Section C-C



Revision	Date	Description
A	21.04.2016	Camera C position updated following Officer advice