

CLIENT:  
LATIS HOMES

TITLE:  
PROPOSED LOWER AND  
GROUND FLOOR PLAN

PROJECT:  
15 GREAT JAMES STREET

SCALE:  
1:100@A3

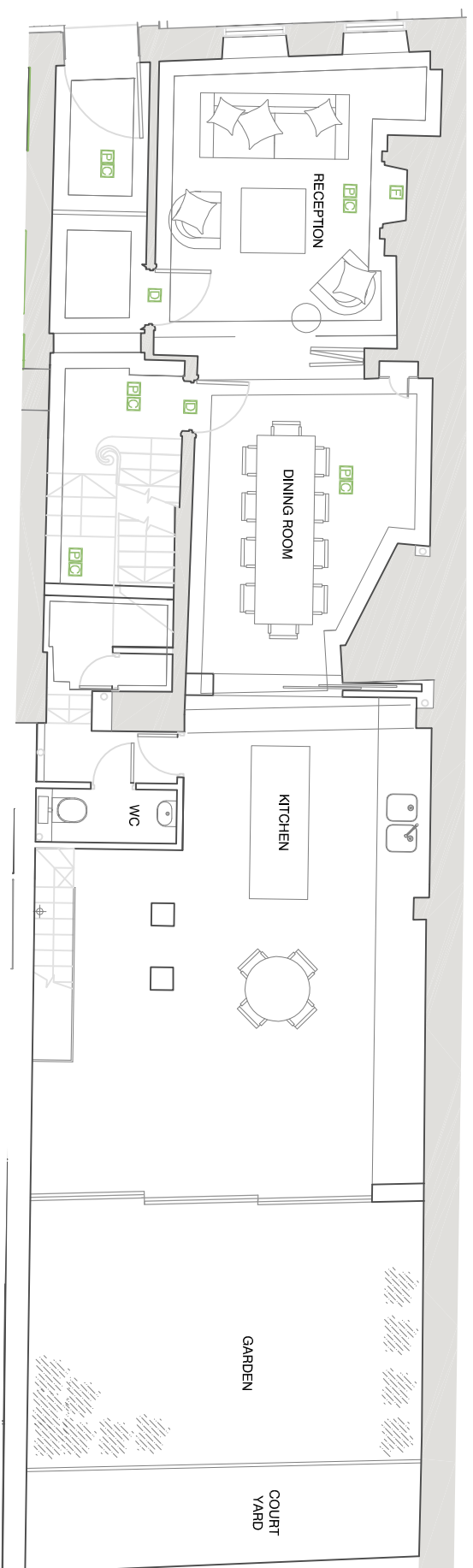
DRG NO.:  
0066\_GA\_2

REV: -

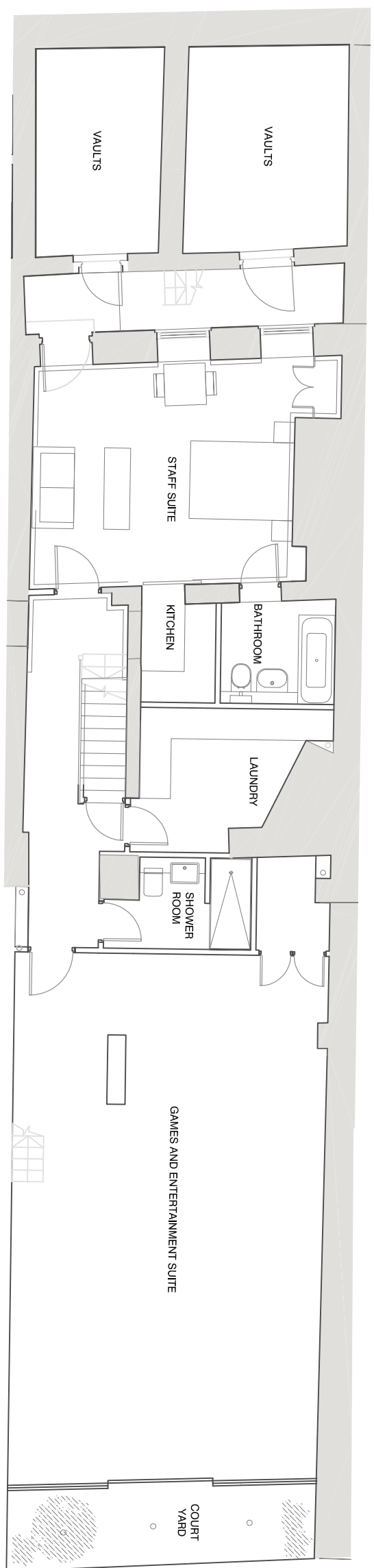
DRAWN: JA      CHECKED: KP      DATE: 21/04/2016

NOTES :

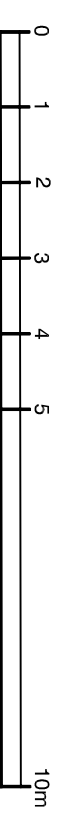
- KEY:
-  Existing panelling including window shutters
  -  Existing corridors
  -  Existing bulkheads
  -  Existing fireproof surrounds to be retained
  -  Existing panelling to be retained
  -  Existing parallel walls to be retained
  -  Existing parallel doors to be retained
  -  Existing corridors to be retained



No. 15 GROUND FLOOR PLAN



No. 15 LOWER GROUND FLOOR PLAN



This drawing is the Copy right of LATIS limited.

This drawing has been produced electronically and may have been photo reduced or enlarged when copied. Do not scale from drawing. Work only to figured dimensions.

This drawing is to be read in conjunction with relevant consultants and engineers drawings and specifications.

LATIS LIMITED  
19-21 GREAT QUEEN STREET, LONDON, WC2B 5BE  
T: +44 (0)207 439 2200  
info@latisgroup.com  
www.latis