
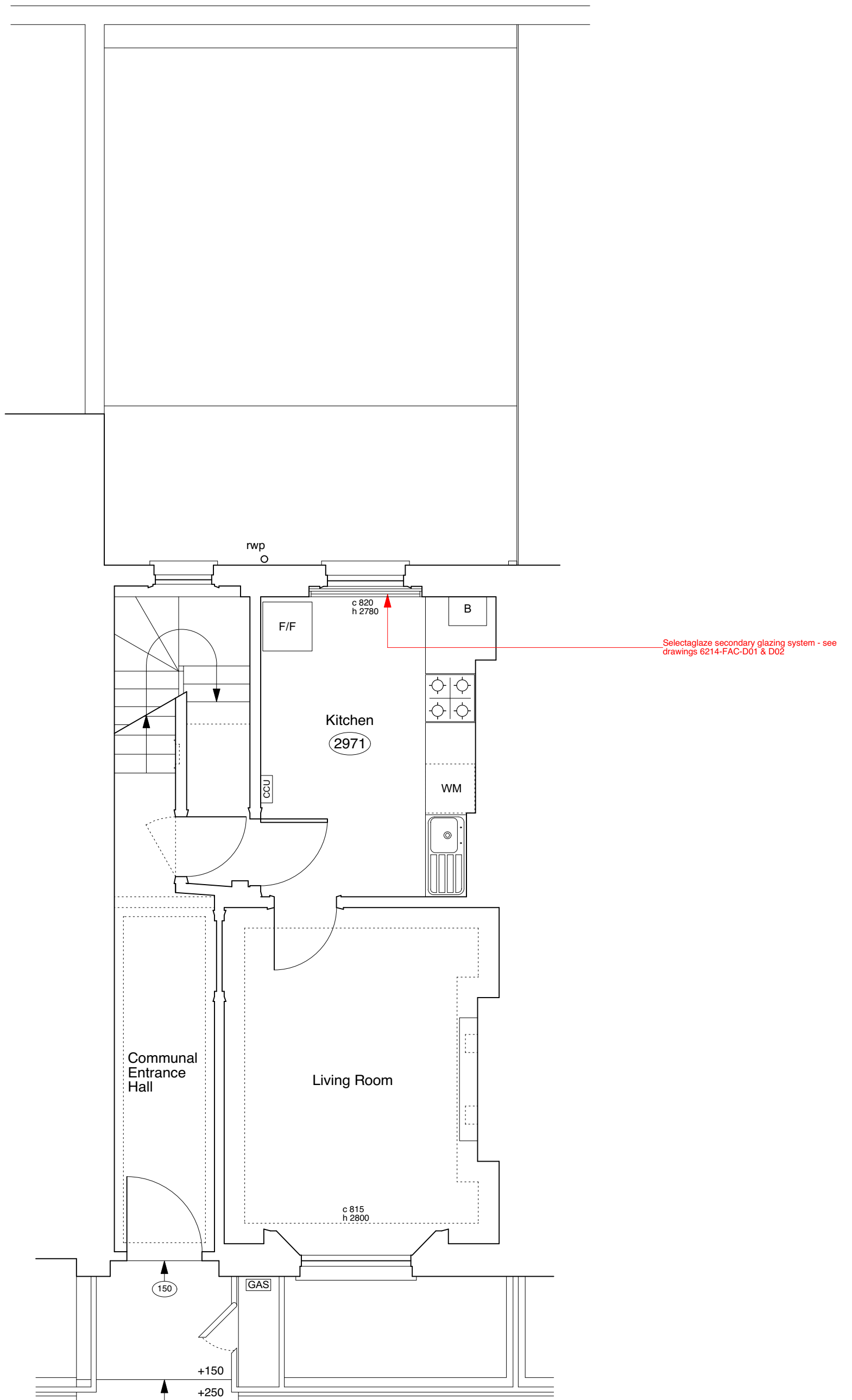
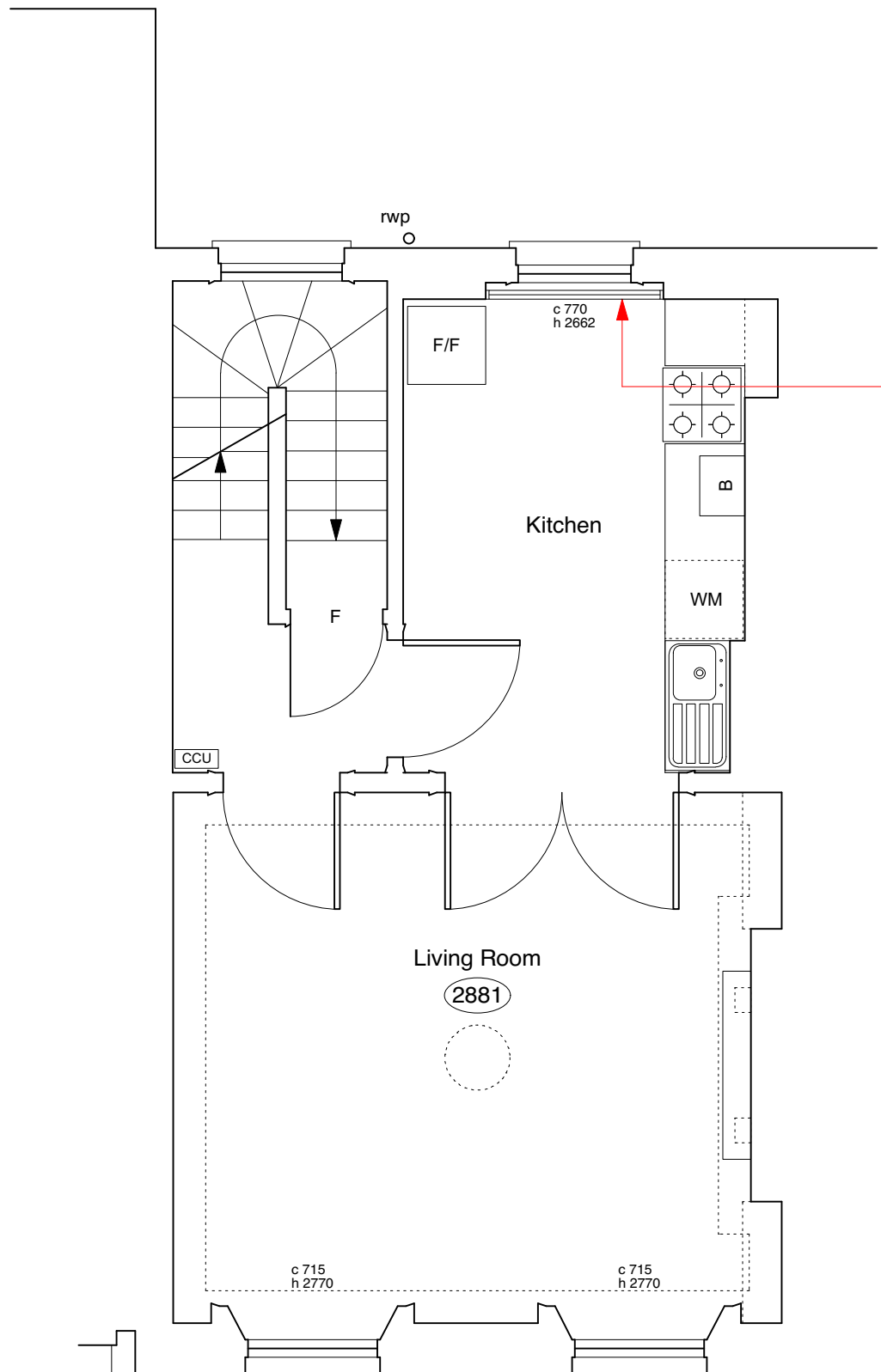


Selectglaze secondary glazing system - see drawings 6214-FAC-D01 & D02

	PROJECT 5 ARCHITECTURE LLP 8 Waterson Street London E2 8HL	job title <b>21 AMPTON STREET, LONDON WC1X 0LT</b>	scale <b>1:50 @ A3</b>	drawn <b>SA</b>	drawing no. <b>6214-AS21-P101</b>
	T: +44 (0)20 7739 9131 F: +44 (0)20 7739 3687 E: info@p5a.co.uk	drawing <b>BASEMENT PLAN - PROPOSED SECONDARY GLAZING</b>	date <b>APRIL 2016</b>	checked <b>XX</b>	





Selectaglaze secondary glazing system - see drawings 6214-FAC-D01 & D02

