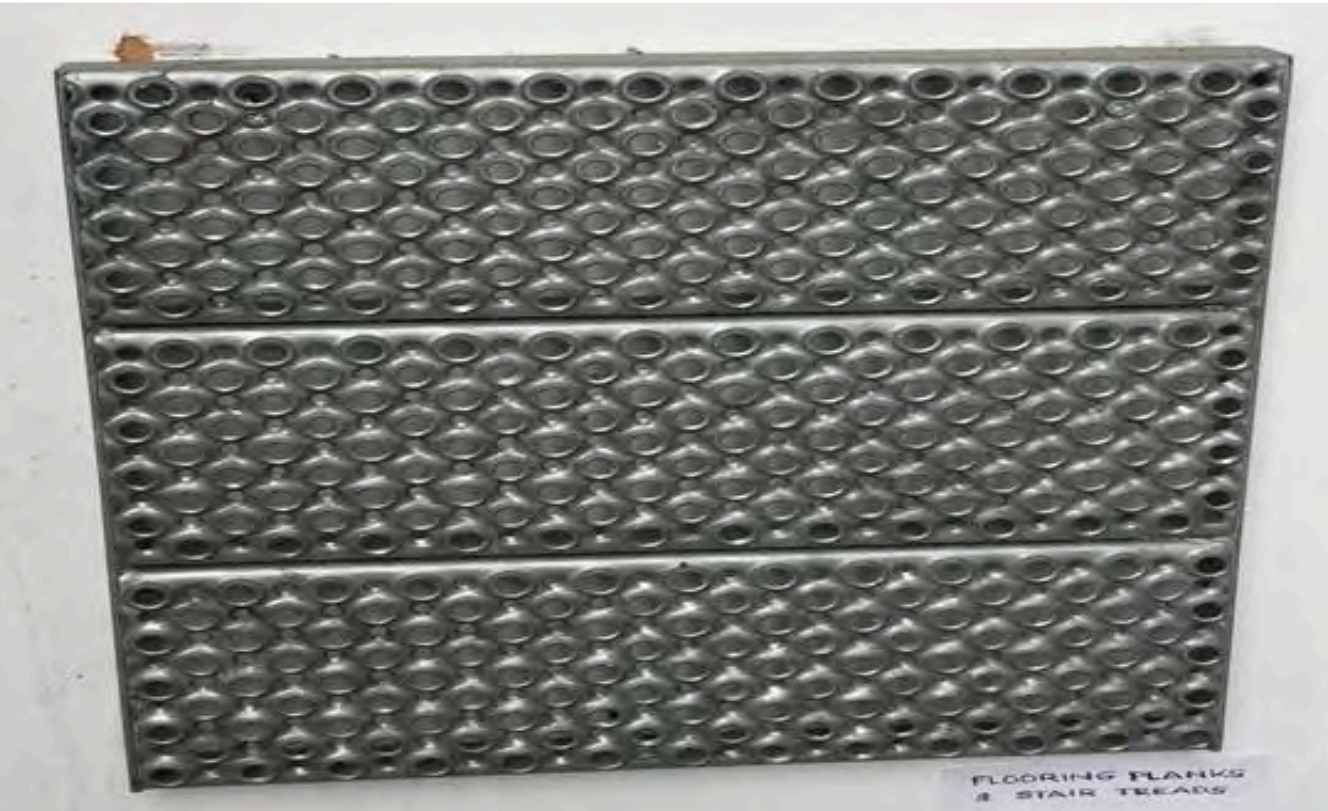




LIFT SHAFT:
POWDER COATED GALVANISED STEEL
PANELS, COLOUR RAL 7009 (green grey),
STAINLESS STEEL DOORS



STAIRS STRUCTURE:
UNCOATED GALVANISED STEEL PROFILES



STEPS AND LANDINGS:
UNCOATED GALVANISED PERFORATED
PLANKS



BALUSTRADE:
UNCOATED GALVANISED STEEL
EXPANDED METAL MESH