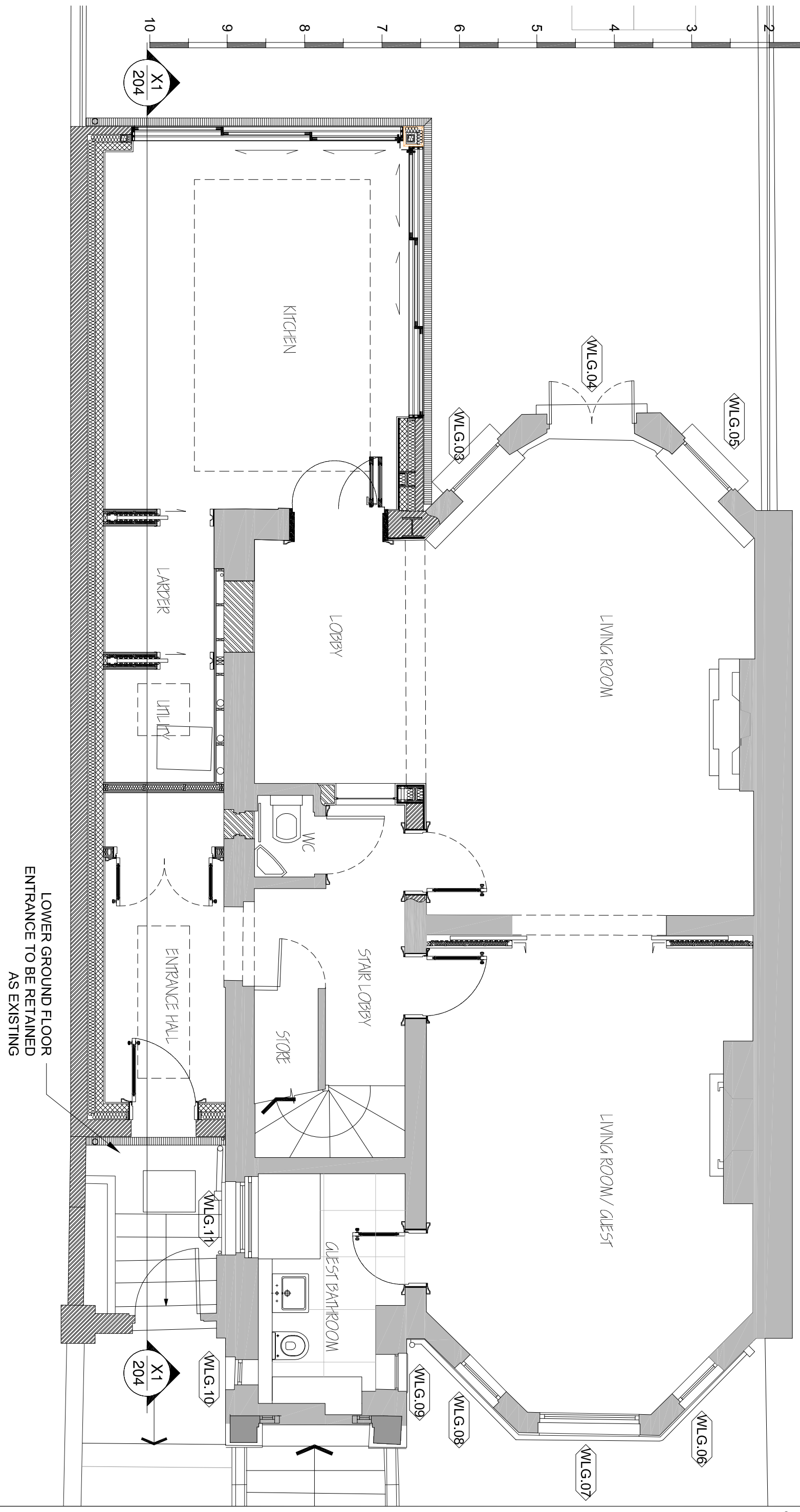


NOTE:
EXISTING TIMBER WINDOWS WLG.03-WLG.04-WLG.05 WLG.11 TO BE REFURBISHED,
PAINTED WHITE AND FITTED WITH CONSERVATION DOUBLE GLAZING TIMBER SLIM LINE
EXISTING WINDOWS -WLG.06-WLG.07 - WLG.08-WLG.09-WLG.10- TO BE REFURBISHED,
PAINTED WHITE AND FITTED WITH NEW SINGLE GLAZING



General Notes:
All dimensions and heights to be checked on site prior construction. Any discrepancies between site, drawing or specification to be reported to the architect immediately.
Do not scale drawings.
The setting out is the contractor's responsibility

Project: REDEVELOPMENT AND REFURBISHMENT OF MAISONETTE	Location: 111A KING HENRY'S ST, LONDON NW3 3QX	Scale@A1: 1:25	Date: 15.12.15
Status: PLANNING	Job No. 025	Dwg. No. 201	Rev. p2
Drawn: DS	Checked: MB	Dwg. Title: LOWER GND FLOOR AS PROPOSED	