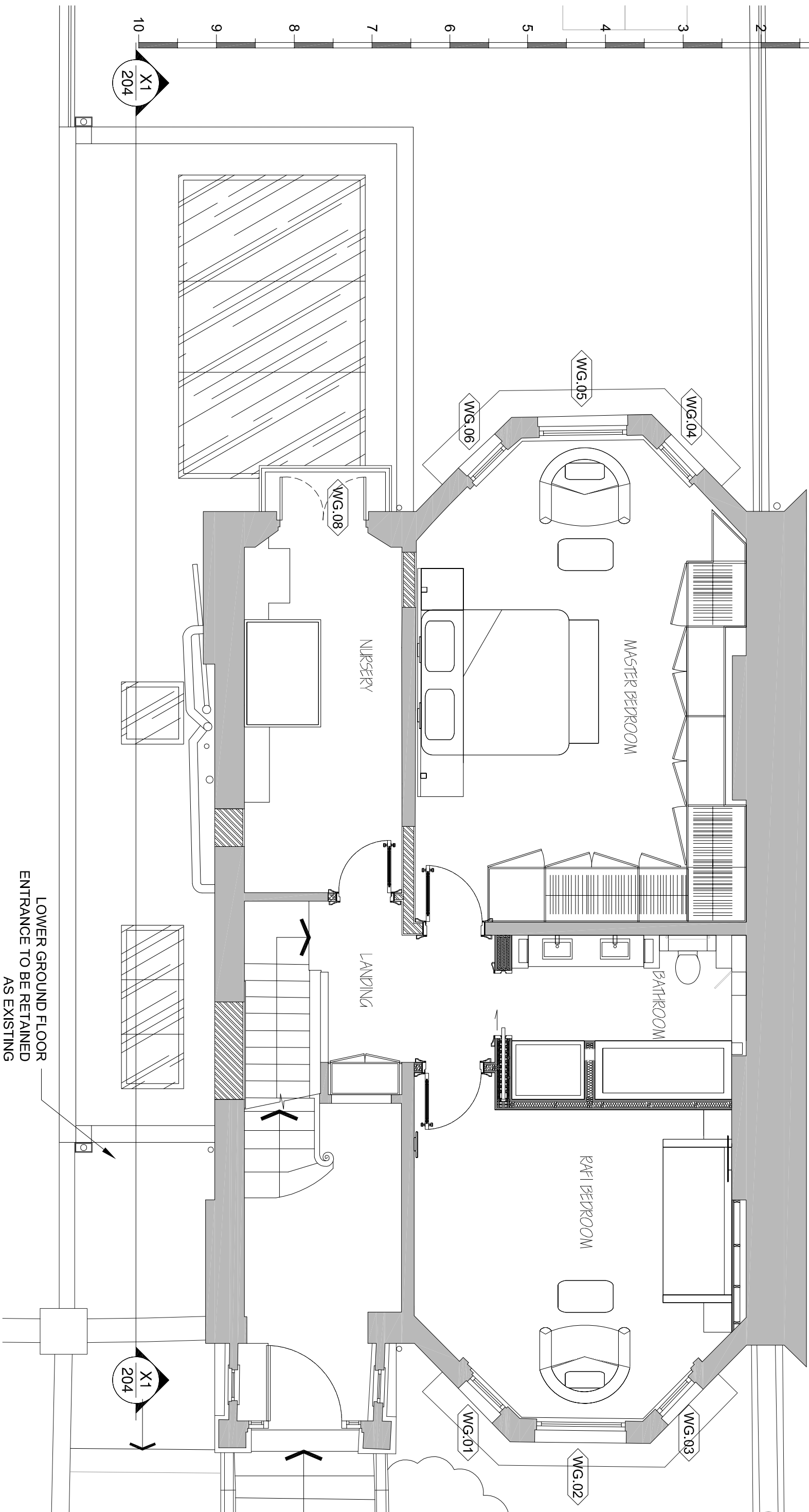


NOTE:
 EXISTING TIMBER WINDOWS WG.04-WG.05-WG.06-WG.08 TO BE REFURBISHED,
 PAINTED WHITE AND FITTED WITH CONSERVATION DOUBLE GLAZING TIMBER SLIM LINE -
 EXISTING WINDOWS WG.01-WG.02-WG.03 TO BE REFURBISHED, PAINTED WHITE AND
 FITTED WITH NEW SINGLE GLAZING



LOWER GROUND FLOOR
 ENTRANCE TO BE RETAINED
 AS EXISTING

202 UPPER GROUND FLOOR AS PROPOSED