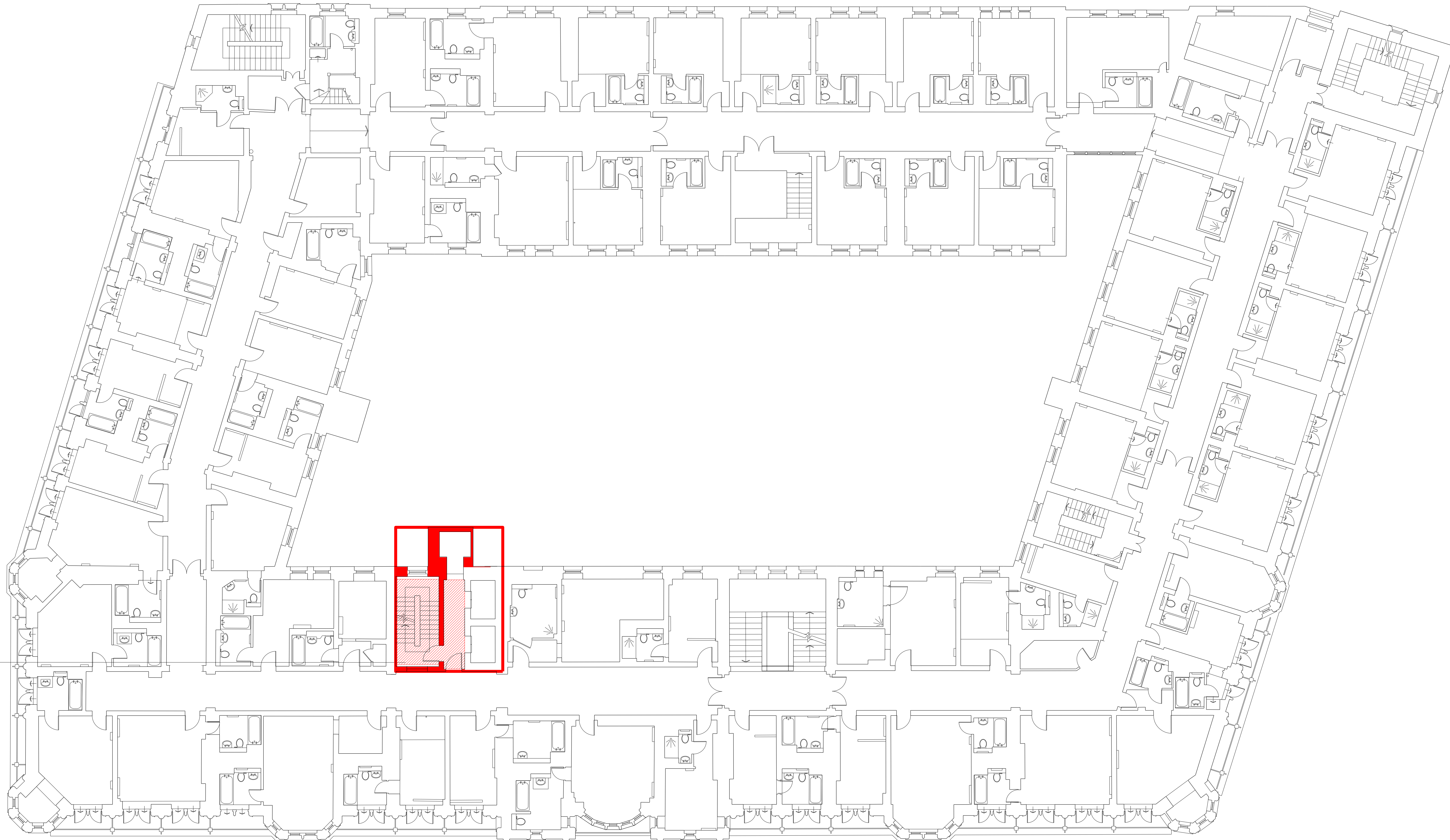


ENABLING WORKS STRIP-OUT /
DEMOLITION - LEGEND / NOTES

- Remove section of wall (full height).
- Remove section of slab/staircase/section of roof etc

E:\10089-T-01-1425-Z04\10089-T-01-1425-Z04.dwg 11/03/2016



Existing stair stripped out including ancillary fittings, such as handrails, lighting & all finishes

— Extent of Planning Application

<p>Keyplan</p>	<p>North</p>
<p>Notes:</p> <p>1. Do not scale</p> <p>2. Contractor to Check all dimensions and report omissions and errors to the Architect</p>	

<p>02 Issued for Planning 11.03.16 MG</p> <p>01 Planning Application Submission 03.02.15 ML</p> <p>No Revision Date Initial Chkd</p>
--

EPR
architects

30 Millbank
London SW1P 4DU
+44 (0) 20 7932 7600
www.epr.co.uk

Russell Hotel
Bloomsbury

Fourth Floor
Strip-out Plan

PLANNING	1: 100 @ A0	03.02.15
Project No	Type	Bldg
10089 - T - 01 - 1425 - Z04		
Number	Zone/Lvl	Rev
		02