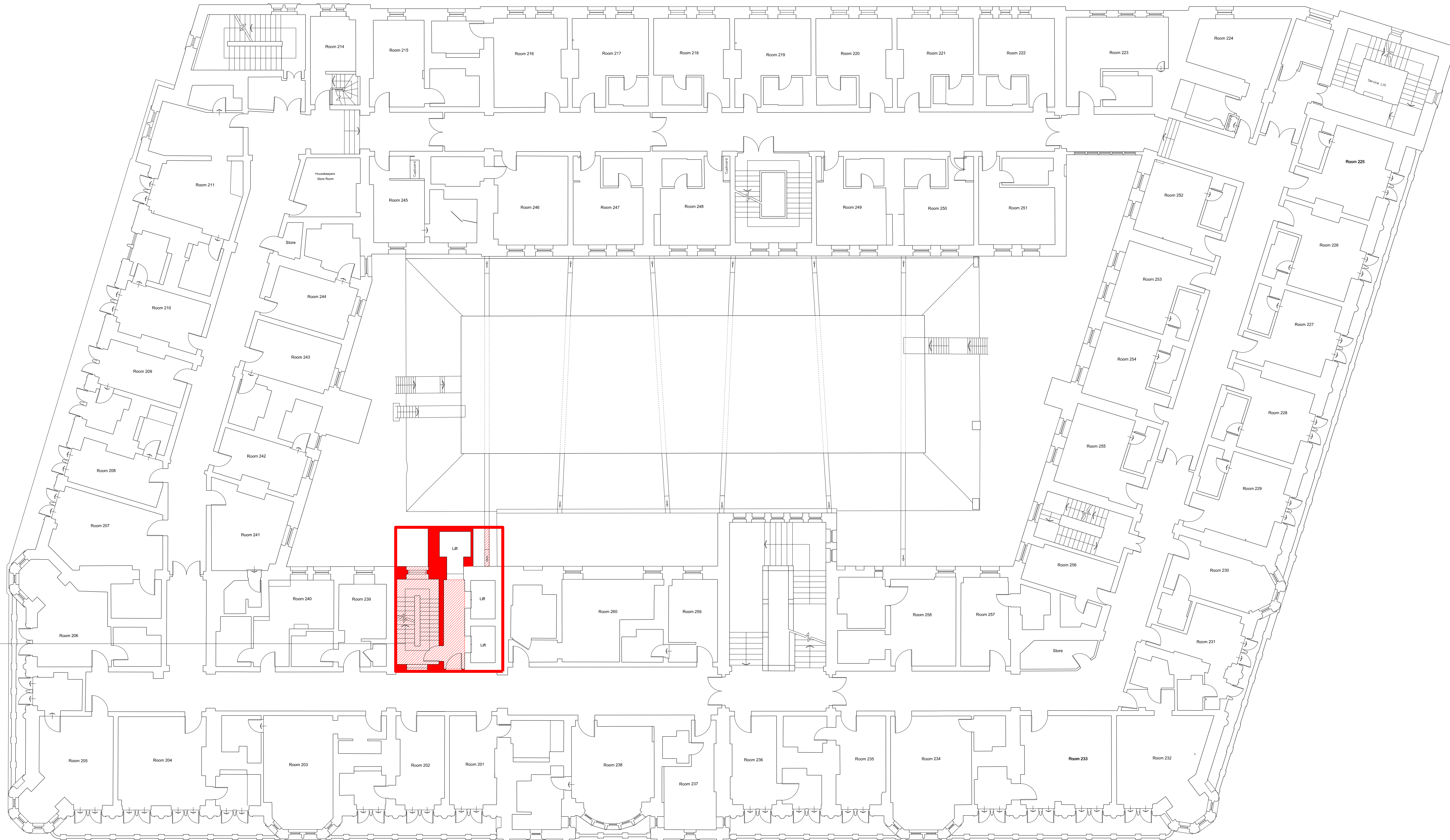


ENABLING WORKS STRIP-OUT /
DEMOLITION - LEGEND / NOTES

- Remove section of wall (full height).
- Remove section of slab/staircase/section of roof etc

E:\10089-T-01-1423-Z02\10089-T-01-1423-Z02.dwg 11/03/2016



Existing stair stripped out including ancillary fittings, such as handrails, lighting & all finishes

Keyplan	North		Extent of Planning Application
Notes: 1. Do not scale 2. Contractor to Check all dimensions and report omissions and errors to the Architect		02 Issued for Planning 11.03.16 MG 01 Planning Application Submission 03.02.15 ML No Revision Date Initial Chkd	

EPR
architects

30 Milbank
London SW1P 4DU
+44 (0) 20 7932 7600
www.epr.co.uk

Russell Hotel
Bloomsbury
Second Floor
Strip-out Plan

PLANNING		1: 100 @ A0	2016.15
Project No	Type	Bldg Number	Zone/Lvl Rev
10089 - T - 01 - 1423 - Z02			02