

GENERAL LEVEL REFERENCES
Refer to spot levels on survey drawings for specific existing levels

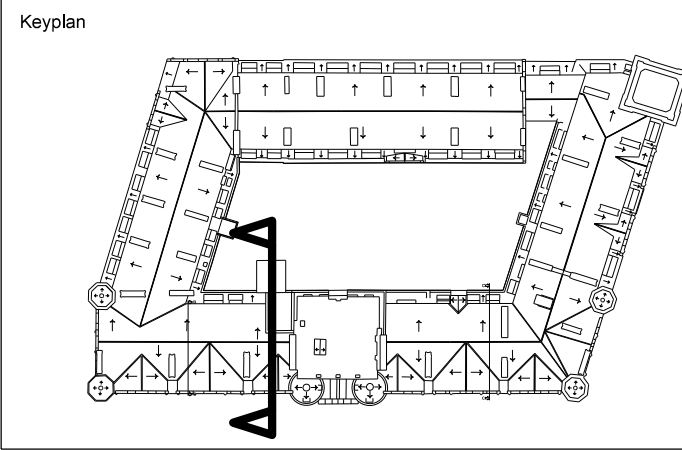
- FLAT ROOF +56.300 FFL
- RIDGE +57.400 FFL
- NINTH FLOOR +55.310 FFL
- EIGHTH FLOOR +52.570 FFL
- SEVENTH FLOOR +49.810 FFL
- SIXTH FLOOR +46.870 FFL
- FIFTH FLOOR +43.840 FFL
- FOURTH FLOOR +40.750 FFL
- THIRD FLOOR +37.440 FFL
- SECOND FLOOR +34.090 FFL
- FIRST FLOOR +30.110 FFL
- MEZZANINE FLOOR +27.240 FFL
- GROUND FLOOR +24.300 FFL
- PAVEMENT LEVEL +23.060 FFL
- BASEMENT FLOOR +20.000 FFL
- LOWER BASEMENT FL. +17.930 FFL



Section Through Existing Lift Shaft (within lightwell)



Section Through Proposed Lift Shaft



Notes:
1. Do not scale
2. Contractor to Check all dimensions and report omissions and errors to the Architect

No	Revision	Date	Initial	Chkd
04	Issued for Planning	11.03.16	MG	
03	Issued for Planning Consent	03.02.15	SC	
02	Issued for Planning Consent	19.12.14	MG	
01	Created	17.12.14	MG	
	No Revision			

EPR architects
30 Millbank
London SW1P 4DU
+44 (0) 20 7932 7600
www.epr.co.uk

Russell Hotel
Bloomsbury
Existing & Proposed Section
Lift Shafts

PLANNING 1: 100 @ A1 03.02.15
Project No. Type Btg Number Zone/Lvl Rev
10089 - T - 01 - 0505 - ZEE 04