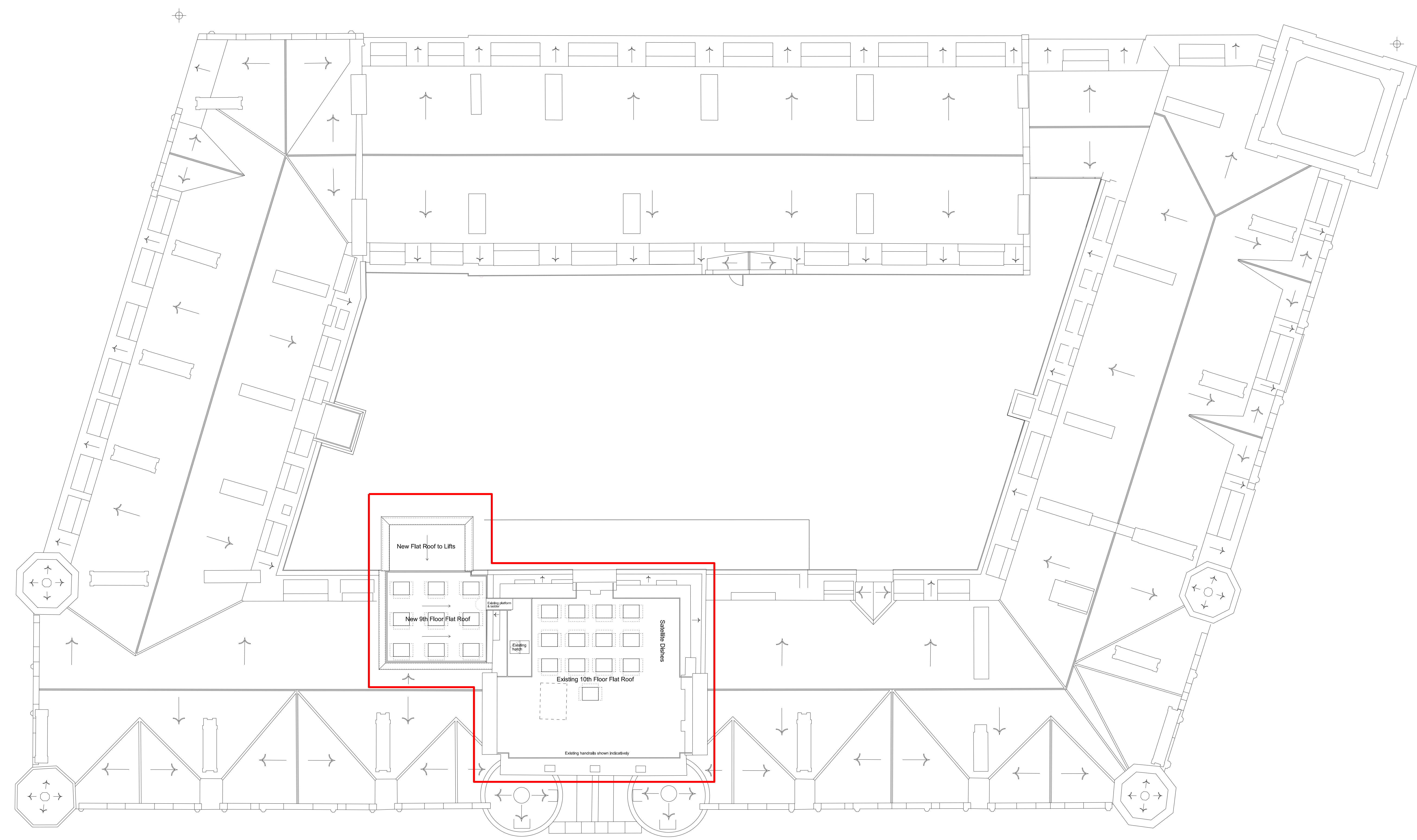


General roof scope will include restoring missing lead flashings, slate and addressing any existing roof leaks.
 Refer to Elementa information for proposed new roof plant.



Keyplan		
02 Issued for Planning 11.03.16 MG 01 Issued for planning 03.03.15 SC No Revision Date Initial Chkd		

EPR
architects

30 Millbank
London SW1P 4DU
+44 (0) 20 7932 7500
www.epr.co.uk

Russell Hotel
Bloomsbury

Proposed General Arrangement Plan
Roof Areas

PLANNING	1:100 @ A0	07.11.14
Project No	Type	Bkg Number
10089 - T - 01 - 0231 - ZXX		02