

## 4.2 Proposed Ground Floor Reception (previous Listed Building Consent ref. 2015/2013/L & Planning Permission ref. 2015/1673/P)

### 4.2.1 Reception, Concierge, Trunk Shop and Front of House Office

To the left hand side of the main entrance, the proposal is to completely reconfigure the reception area to improve the guest arrival experience, improve circulation, provide some hotel retail area and provide a direct route through to the food and beverage offering on Bernard Street.

Tara Bernerd & Partners have proposed an interior design scheme sympathetic to the sensitive historic aspects of the original interior whilst also reflecting the demands and qualities required of a high level four star hotel brand. The interior scheme throughout draws inspiration from the 'Bloomsbury Set' and the original design intent of the architect, Charles Fitzroy Doll.

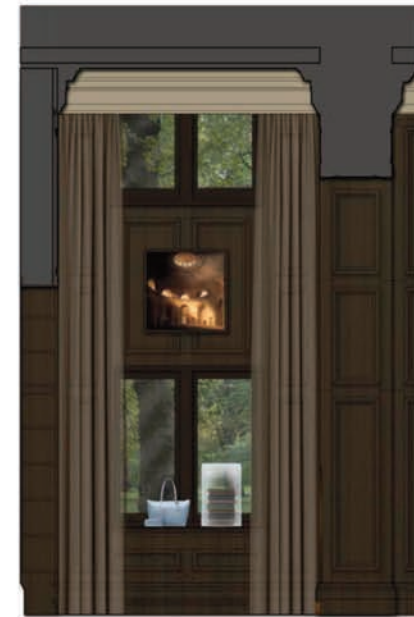
Much of the original structure in this area (including the form of the original Business Room) is retained, but the walls are opened up to provide further transparency from the street with fewer key spaces utilised for back of house. The reception desk is retained in its existing location, but with a new hotel retail outlet one side and a lounge area on the other.

The interior design proposal includes a new plasterboard ceiling with mouldings, new mosaic floor to match the lobby, inset rug, half-height shutters to windows, a fire-place with candles and new timber panelling with integrated bookshelves & retail units.



Proposed Reception Elevations - Tara Bernerd & Partners  
showing new reception and concierge desk, timber panelling with integrated shelving and fireplace in lounge area





Proposed Trunk Shop Elevations - Tara Bernerd & Partners  
showing new timber panelling and retail units



B1. TIMBER | B2. FEATURE DARK PETROL VELVET - FEATURE CURTAINS | B3. RUG | B4. ANTIQUE BRASS | B5. TAN LEATHER - CHAIRS | B6. PARQUET TIMBER FLOOR

Proposed Finishes for The Library - Tara Bernerd & Partners

#### 4.2.2 Library and Luggage Room

On the right hand side of the entrance, the proposal is to retain the existing structure with a luggage room in the area currently occupied by the concierge and luggage, and an adjacent 'library' area within the remaining back of house areas.

The 'library' is proposed as a multi-functional space that can be used as a public lounge as well as a private room operating alongside the bar, for meetings, wedding food tasting etc.

The Tara Bernerd & Partners proposal in this area follows the concept for the reception - it is fitted out with new plasterboard ceiling with mouldings, new mosaic floor to match the lobby, sliding glass doors, half-height shutters to windows, new gas fireplace and timber panelling with integrated bookshelves.

#### 4.2.3 Lobby Area, Feature Staircase & Vestibule

The proposals for this area remain as proposed in the previous planning application for the Ground Floor and Externals.





Proposed Reception Visual - Tara Bernerd & Partners