



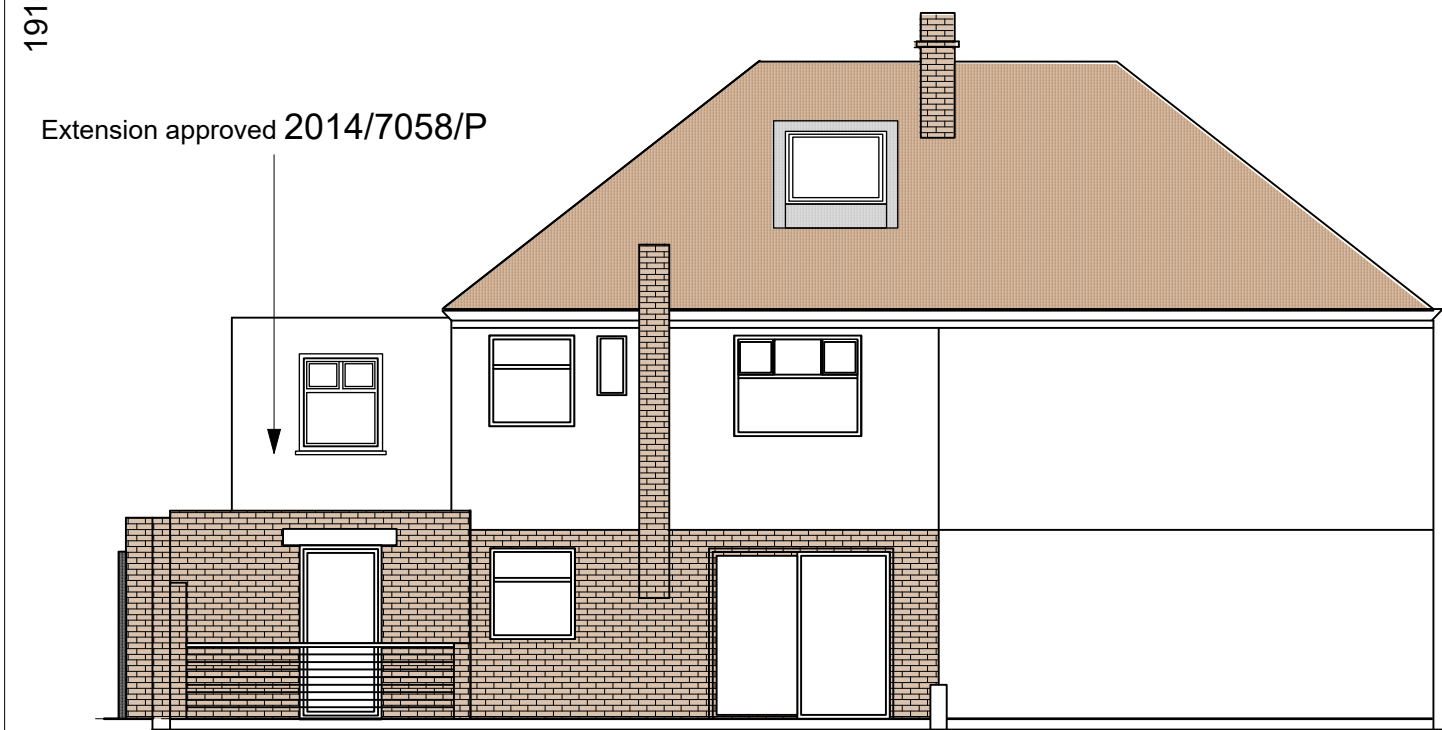
193 LEIGHTON ROAD

South Elevation

pavement light at ground level

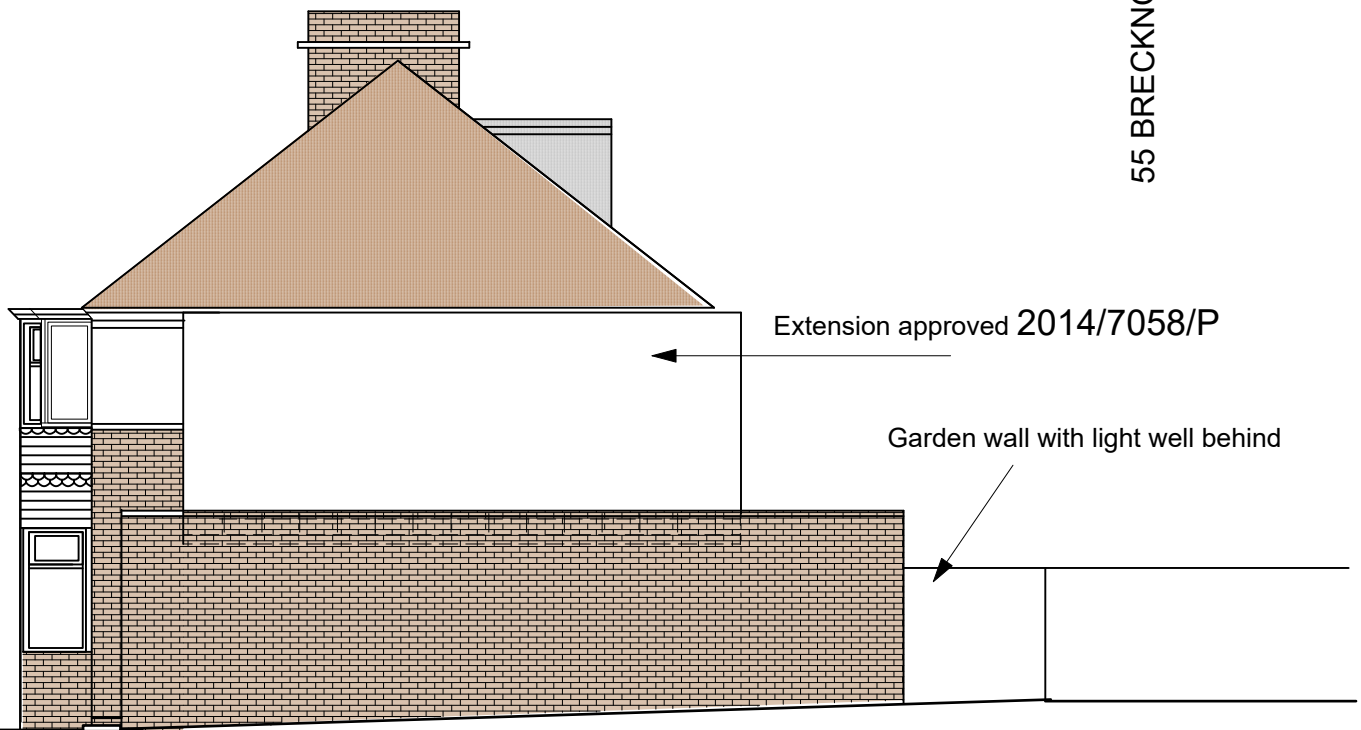
191 LEIGHTON ROAD

55 BRECKNOCK ROAD



North Elevation

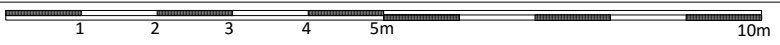
Railings to light well
timber hand rail and steel rod railings
brick garden walls



East Elevation

Extension approved 2014/7058/P

Garden wall with light well behind



193 Leighton Road, NW5 2RD

Proposed Elevations LR /P13

1/100 @ A3

Sam Stork Associates
tel: 07974355101
sam@samstork.com
www.samstork.com