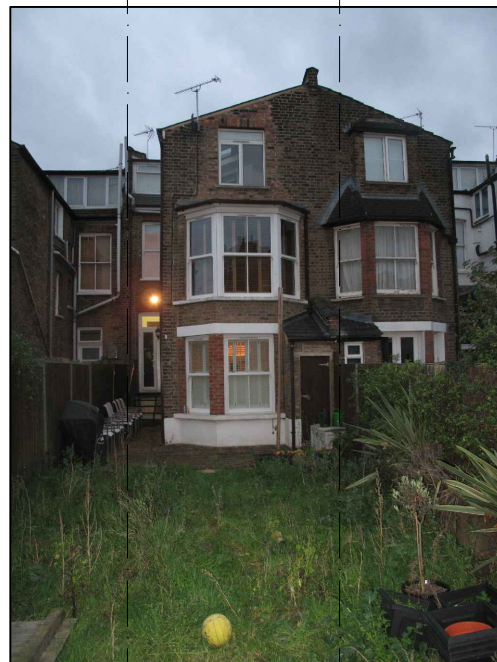
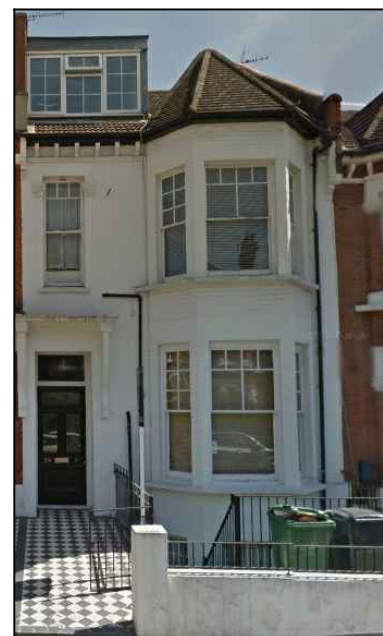


Site Context



Existing Rear Elevations

25 Holmdale Road



2013/0680/P
Approved Proposed
Scheme

25 Holmdale Road

Existing Street Elevations
with other proposed developments.

/ 08/04/16 Planning
rev date amendment
project 25 Holmdale Road

scale n/a

drawing Site Context

drawing no. PL - 500

Paul+O Architects Ltd
Unit 8, 73 Maygrove Road
NW6 2EG
t/f +44 020 7604 3818
www.paul-o-architects.com