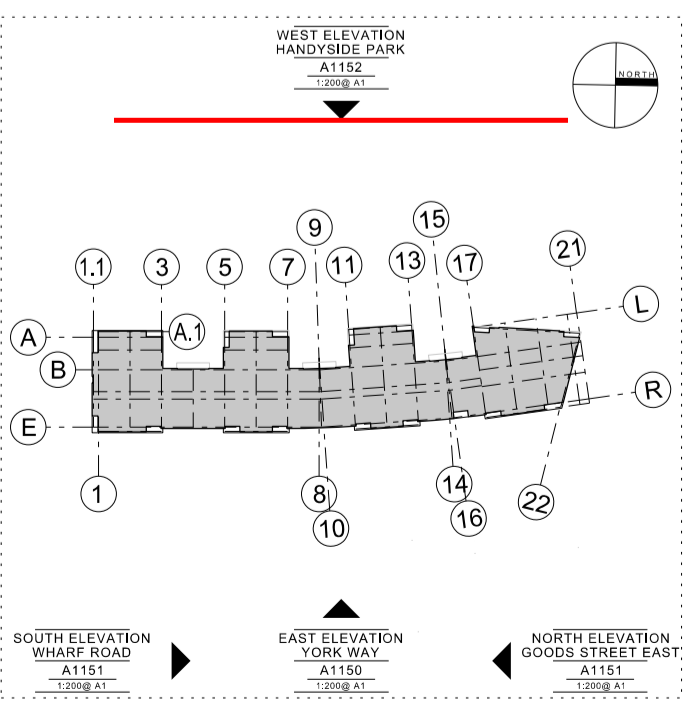


NOTES ON MATERIALS

- ① : glazed terracotta facade panels; grey palette (arrangement on elevation indicative only)
- ② : glazed terracotta facade panels; 'off white' palette (arrangement on elevation indicative only)
- ③ : pressed polished aluminium cladding
- ④ : polyester powder coated continuous aluminium channel
- ⑤ : composite aluminium-timber glazing
- ⑥ : satin anodised aluminium sliding louvre screens
- ⑦ : frameless glass balustrade with stainless steel capping rail
- ⑧ : PPC aluminium soffit and trim
- ⑨ : obscured glass privacy screen between balconies
- ⑩ : satin anodised aluminium louvre privacy screens
- ⑪ : fair faced concrete columns
- ⑫ : parapet faced in terracotta tiles with frameless glass balustrade
- ⑬ : PPC aluminium louvre
- ⑭ : glazed sliding doors
- ⑮ : glazed commercial entrances recessed with PPC aluminium frame
- ⑯ : glazed residential entrance recessed with PPC aluminium frame
- ⑰ : full height glazing with varying glazed panel widths
- ⑱ : back painted glass
- ⑲ : photovoltaic panels
- ⑳ : lift over run
- ㉑ : glazed skylight (to apt D75)
- ㉒ : roof top plant



ELEVATION 03 - HANDYSIDE PARK



Rev	Drawn	Date	Comment
0	MD	17.11.13	FINAL CONSTRUCTION ISSUE

weedon partnership architects

Hurrys Yard 176-178 Newhall Street  
T: 0121 454 4171  
architects@weedonarchitects.co.uk

KINGS CROSS CENTRAL BUILDING J  
ELEVATION 03 - HANDYSIDE PARK  
GENERAL ARRANGEMENT

Drawn TMB Date JUL 2010 FINAL ISSUE  
Checked Scale 1:200 @ A1 15946 A1152-0

Birmingham B3 1BZ  
F: 0121 455 8152  
www.weedonarchitects.co.uk