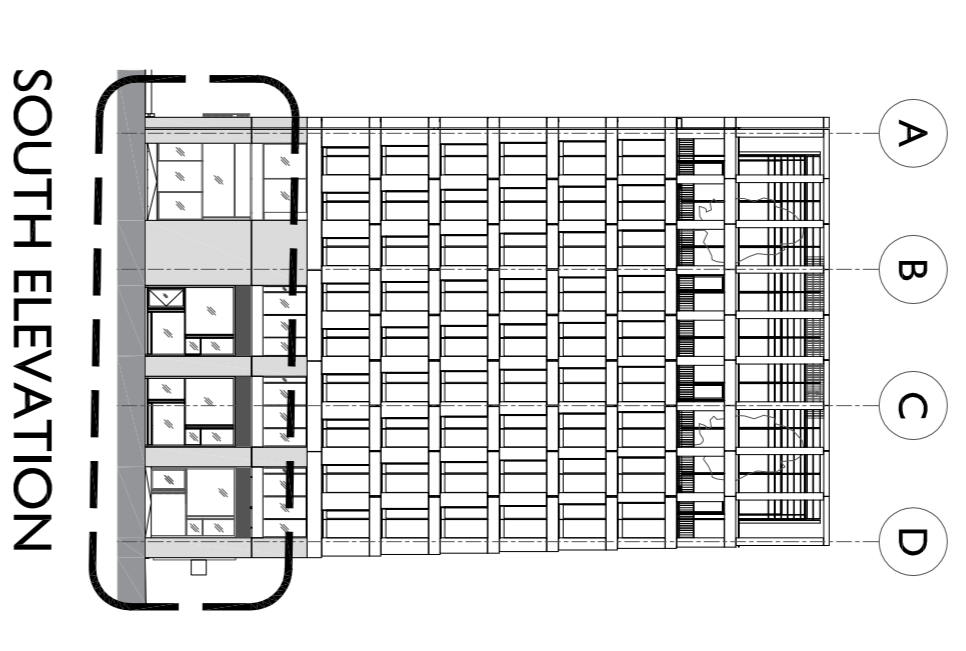
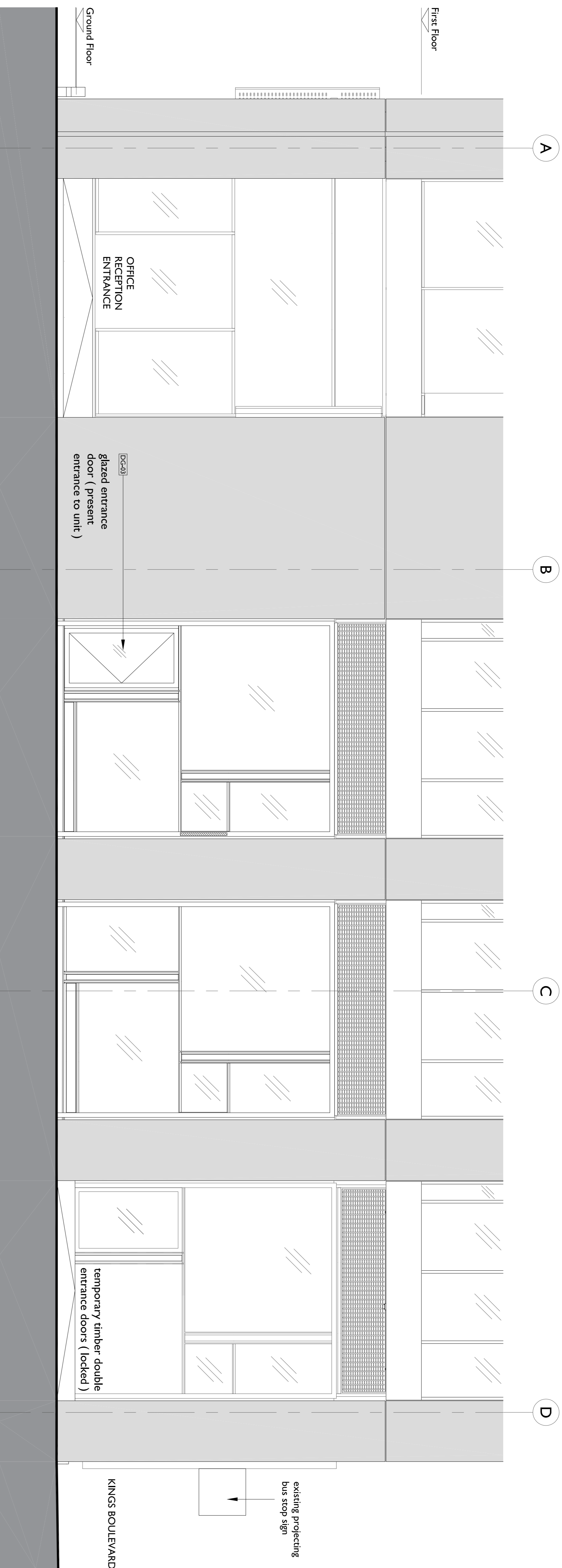
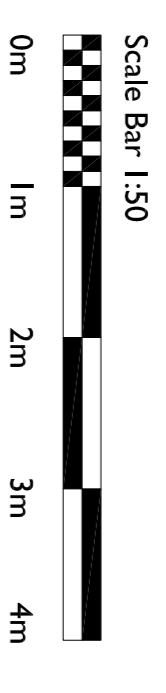
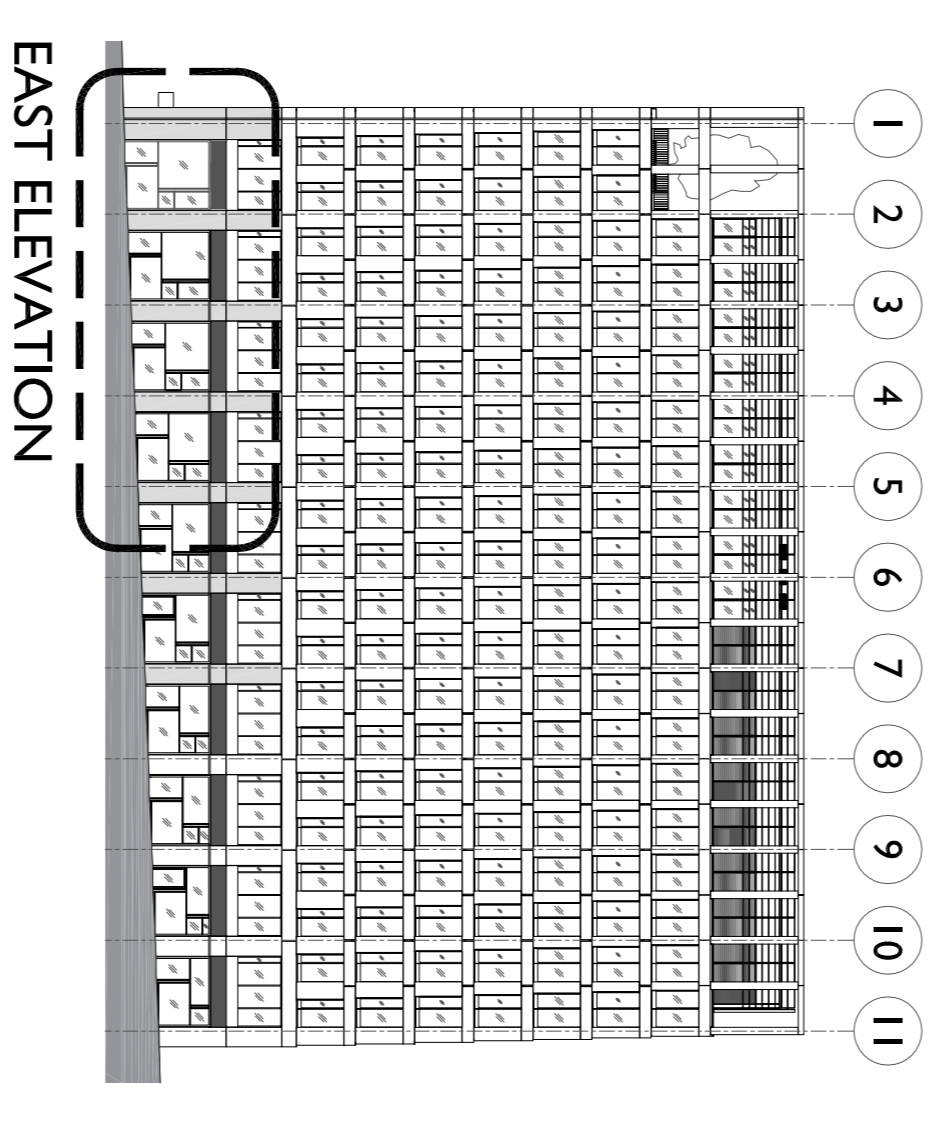
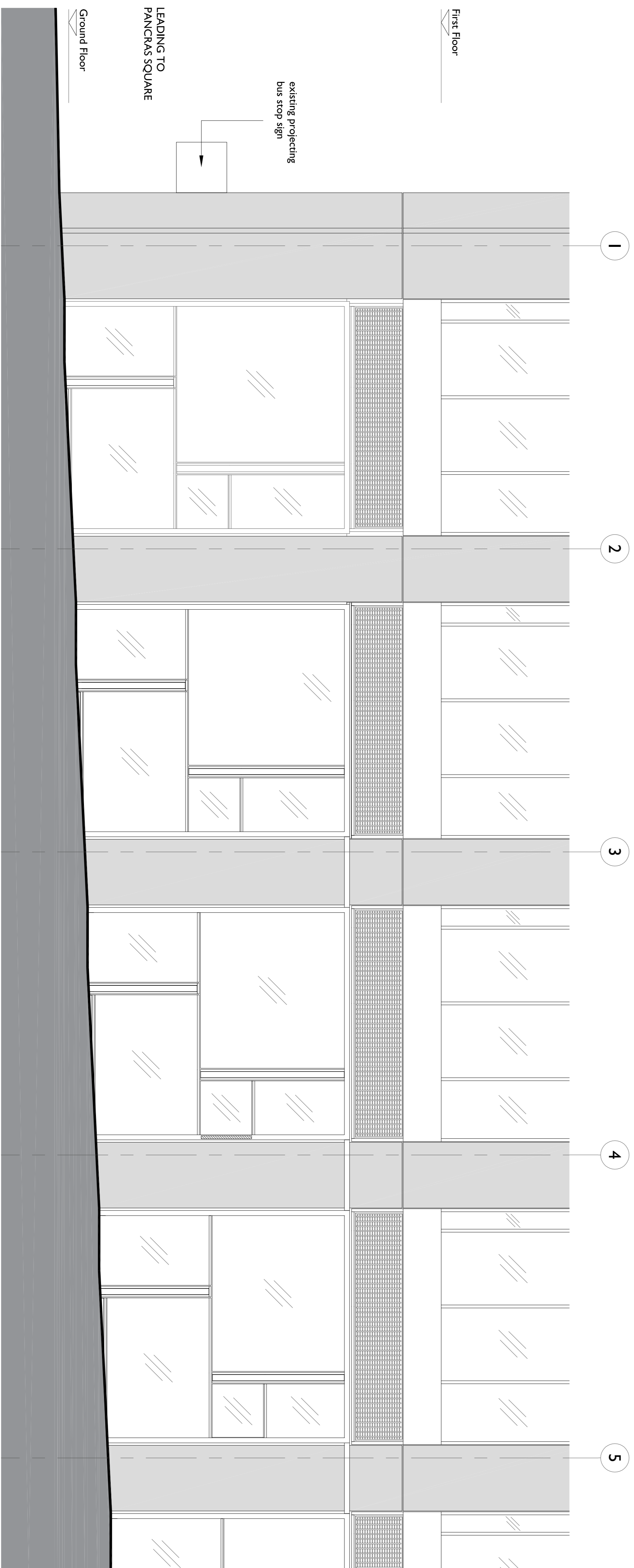


**THESE NOTES ARE IMPORTANT**  
 If you are in any doubt about something - ASK  
 This drawing must be read in conjunction with all necessary architectural, structural, services drawings and scope of works  
 This drawing is copyright protected and unless specifically agreed with Markwick Architects can only be used for the project noted in the title box below.



ELEVATION A ( SOUTH ELEVATION )



EAST ELEVATION

\* ISSUED FOR PLANNING 150416 LS TC  
 REV. DESCRIPTION DATE DRN CHKD.

**M A R K W I C K**  
**A R C H I T E C T S**  
 T H E O L D D A I R Y  
 5 1 A S T . P E T E R S S T R E E T  
 S O U T H C R O Y D O N S U R E Y C R 2 7 D G  
 T E L E P H O N E 0 2 0 8 6 8 6 2 9 5 5  
 E - M A I L m a @ m a r k w i c k a r c h i t e c t s . c o . u k

**CLIENT**  
 Nike  
**PROJECT**  
 Unit 1 - No. 2 Pancras Square  
 Kings Boulevard, London N1C 4AG  
**DRAWING TITLE**  
 Existing Elevations

**DATE** SCALE  
 April 2016 1:50 @ A1  
**DRAWING NUMBER** DRAWING REVISION  
 1522 / P / 601 \*

**DRAWN BY** CHECKED BY  
 LS TC

ELEVATION B ( EAST ELEVATION )

EXTENT OF NIKE UNIT

EXTENT OF NIKE UNIT

LEADING TO  
 PANCRAS SQUARE  
 Ground Floor

existing projecting  
 bus stop sign

First Floor

Ground Floor

OFFICE  
 RECEPTION  
 ENTRANCE

glazed entrance  
 door ( present  
 entrance to unit )

temporary timber double  
 entrance doors ( locked )

KINGS BOULEVARD

existing projecting  
 bus stop sign