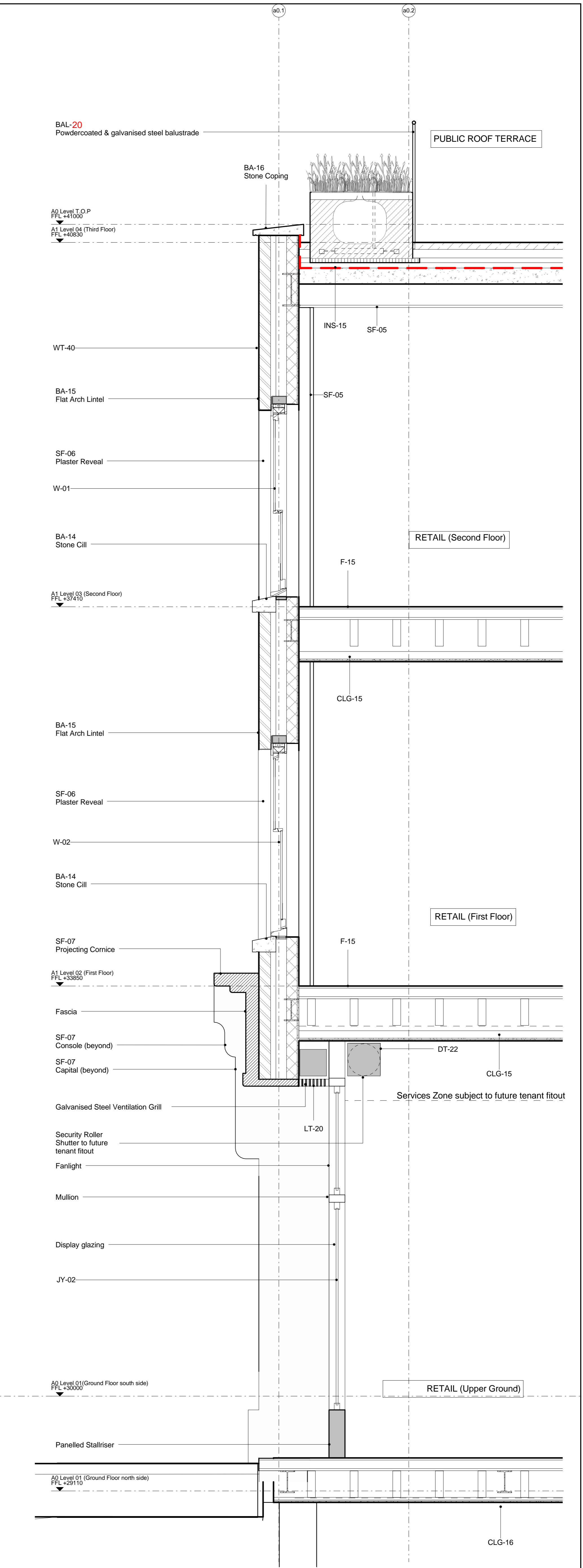




1 Typical Bay Elevation



2 Typical Bay Section

NOTE

- Grid indicative only
- Refer to Landscape Drawings for paving details and footpath levels
- Refer to A0_(21)_3000 series for brick set out and facade details
- Final Design subject to Council Review

Refer to T Sheet for specification clauses

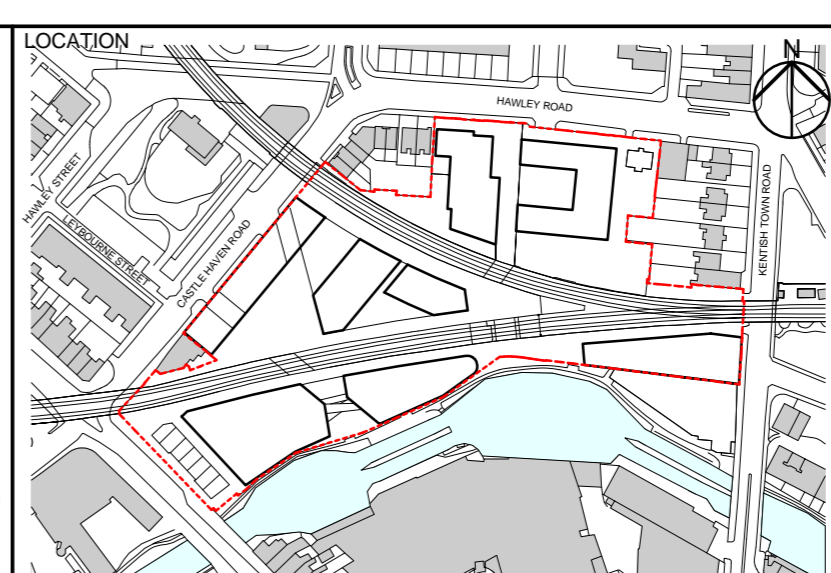
REV	DATE	DESCRIPTION
T01	26/06/15	Stage E Issue
T02	24/07/15	Stage E Drawings with TRS Sheet Codes
T03	18/12/15	Issued for ERs

CONSULTANTS	
CLIENT:	Stanley Sidings
CONTRACTOR:	-
STRUCTURAL ENGINEER:	Walsh Group
MECHANICAL ENGINEER:	Hoare Lea
COST CONSULTANT:	Gardiner & Theobald
PROJECT MANAGER:	Gardiner & Theobald
ACOUSTIC CONSULTANT:	Anup
TRANSPORT CONSULTANT:	Anup
PLANNING CONSULTANT:	Gerald Eve
LANDSCAPE ARCHITECT:	Fabrik
CDM CO-ORDINATOR:	MSA Safety

NOTE

- Do not scale from this drawing.
- All dimensions to be checked on site by the contractor and such dimensions to be his responsibility.
- Report all drawing errors, omissions and discrepancies to the architect.
- This document may be issued in an uncontrolled CAD format to enable others to use it as background information to make alterations and/or additions. In that instance the file will be accompanied by a PDF version. It is for those making such alterations and additions to ensure that they make use of current background information.

AHMM Ltd accepts no liability for any such alterations or additions to the background information or arising out of changes to background information which occur prior to alterations of additions being made.



ALLFORD HALL MONAGHAN MORRIS
 ARCHITECTS Ltd
 5-23 OLD STREET, LONDON, EC1V 9HL
 TEL 020 7251 5261 FAX 020 7251 5123 WEB WWW.AHMM.CO.UK

job title
CAMDEN LOCK VILLAGE

drawing title / location
A0 Shopfront Strategy - Typical Bay

drawn by	checked	scale	status
WH	LMD	1:20 @ A1	Issued for ERs
project	building	class	drawing number
14045	A0_(21)_	5020	T03