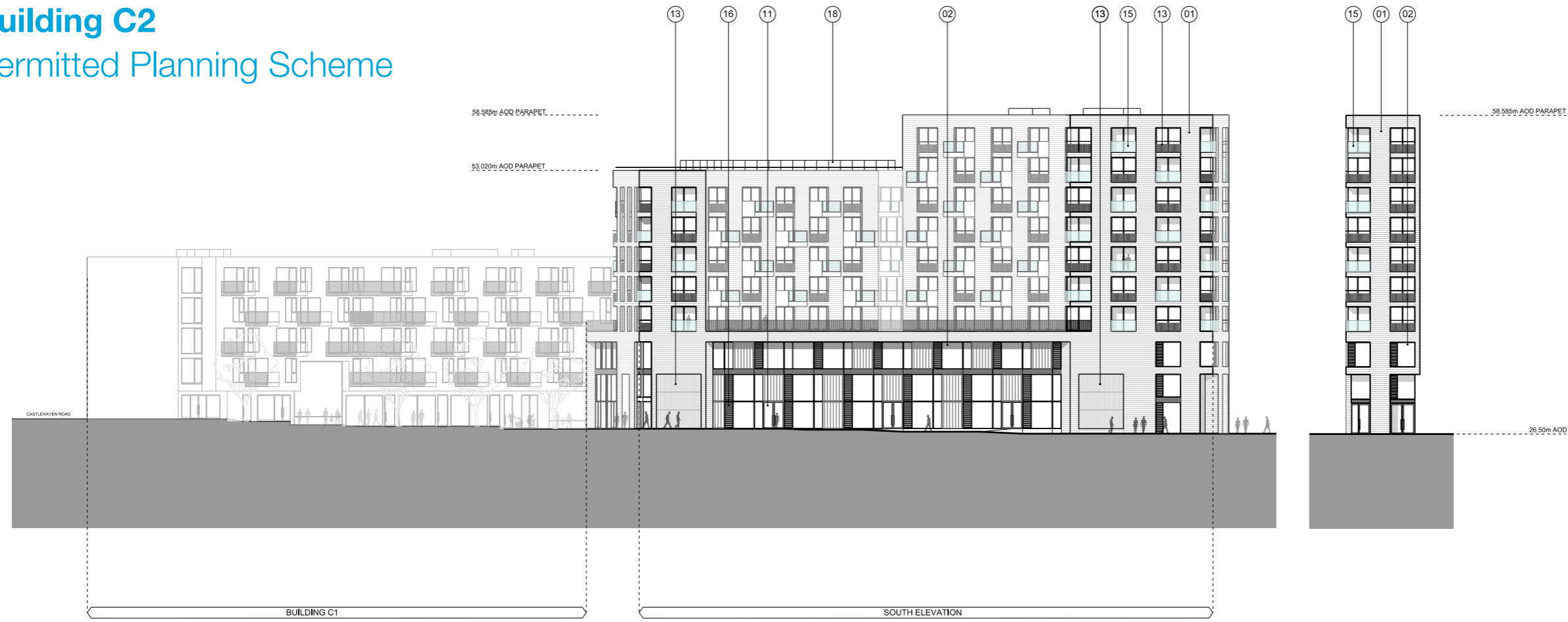


4.0 Building C2

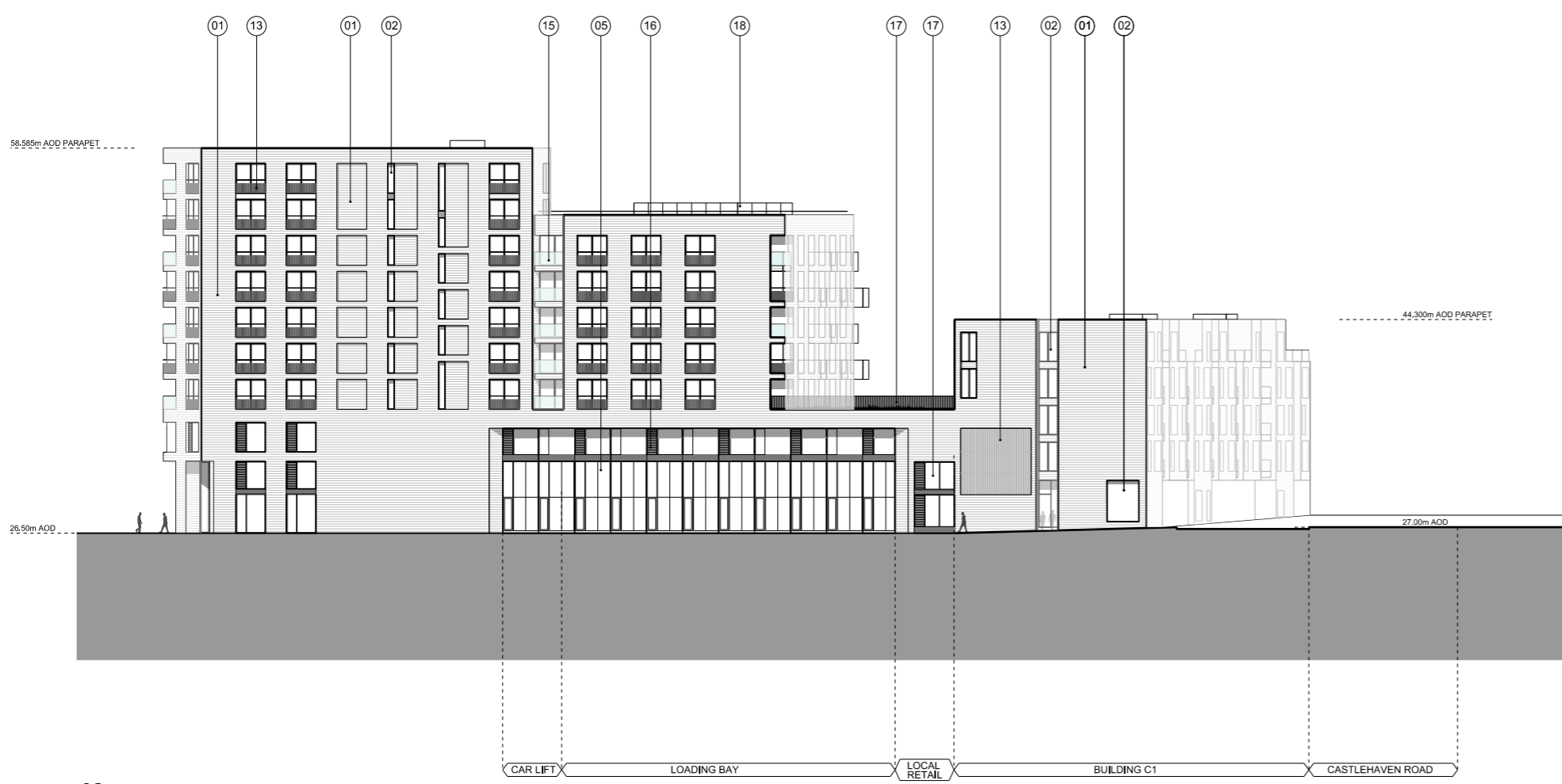
4.3 Permitted Planning Scheme



- KEY PLAN
- KEY
- 01 BRICK
 - 02 METAL FRAMED GLAZING
 - 03 TIMBER SCREEN
 - 04 METAL SHUTTERS
 - 05 METAL PANEL(S)
 - 06 METAL BRIDGE
 - 07 TIMBER BENCH
 - 08 METAL ROOF
 - 09 METAL BALUSTRADE / HANDRAIL
 - 10 TIMBER DECK
 - 11 METAL FRAMED GLAZED DOOR
 - 12 METAL FRAMED GLAZED SHOPFRONT
 - 13 VERTICAL TERRACOTTA BAGUETTES
 - 14 GREEN ROOF
 - 15 GLASS BALUSTRADE
 - 16 LOUVRE PANEL
 - 17 METAL RAILING BALUSTRADE
 - 18 METAL LOUVRE PLANT SCREEN

01 BUILDING C2_ SOUTH ELEVATION

02 BUILDING C2_ EAST END ELEVATION

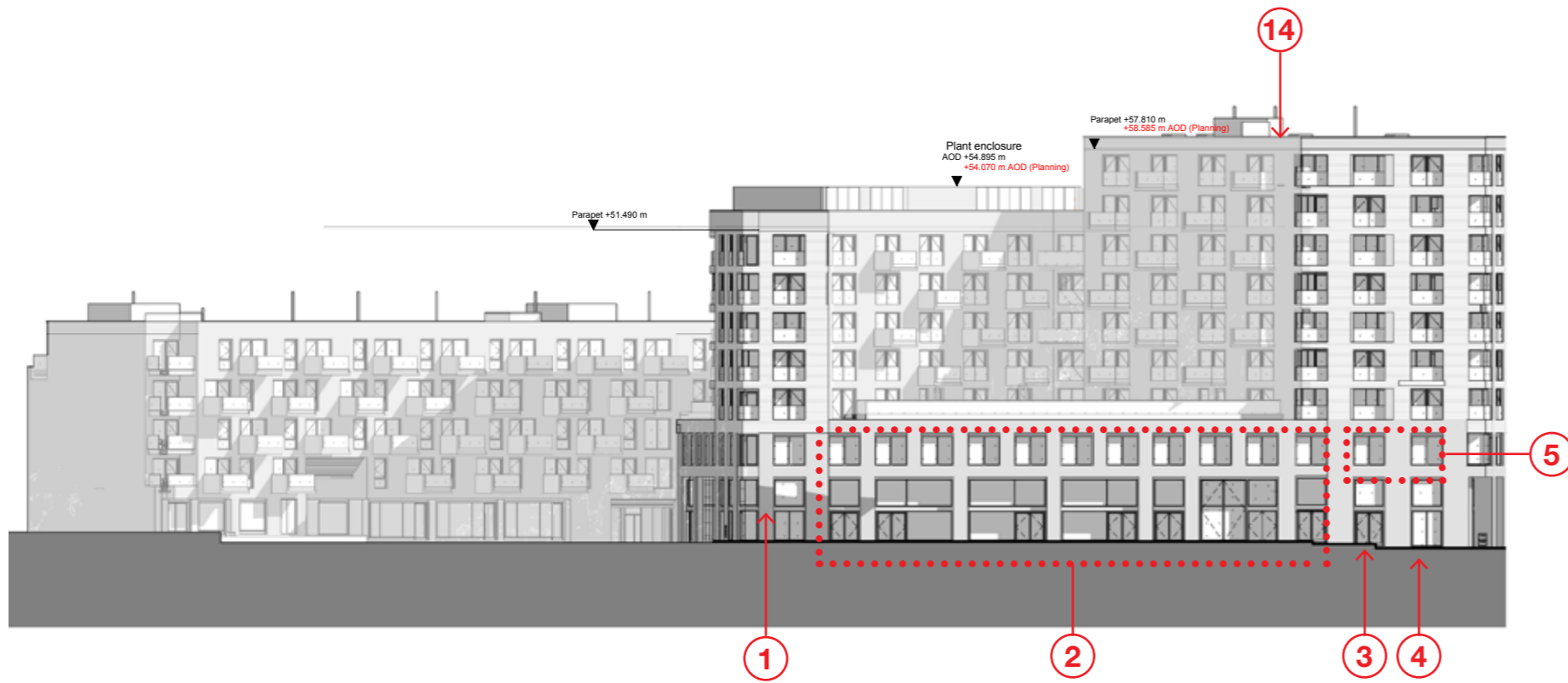


03 BUILDING C2_ NORTH ELEVATION

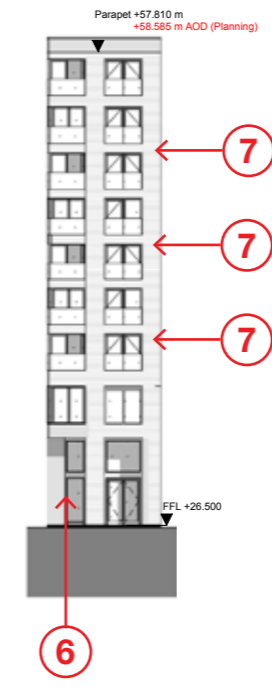
REV	DATE
-	31/08/12 PLANNING ISSUE
NOTE	
<p>1. Do not scale from this drawing, other than for Planning purposes.</p> <p>2. All dimensions to be checked on site by the contractor and such dimensions to be his responsibility.</p> <p>3. Report all drawing errors, omissions and discrepancies to the architect.</p> <p>4. This document may be issued in an uncontrolled CAD format to enable others to use it as background information to make alterations and/or additions. In that instance the file will be accompanied by a PDF version. It is for those making such alterations and additions to ensure that they make use of current background information. AHMM Ltd accepts no liability for any such alterations or additions to the background information or arising out of changes to background information which occur prior to alterations or additions being made.</p>	
<p>ALLFORD HALL MONAGHAN MORRIS</p> <p>ARCHITECTS Ltd 2ND FLOOR, BLOCK C, 5-23 OLD STREET LONDON EC1V 9HL TEL 020 7251 5261 FAX 020 7251 5123 WEB WWW.AHMM.CO.UK</p>	
<p>Job title CAMDEN LOCK VILLAGE</p>	
<p>drawing title / location BUILDING C2 PROPOSED GA ELEVATIONS</p>	
drawn by	checked scale status
CS	WL 1:250@A1; 1:500@A3 PLANNING
project	zone classification drawing no. revision
12001	C [00] 2 01 -

4.0 Building C2

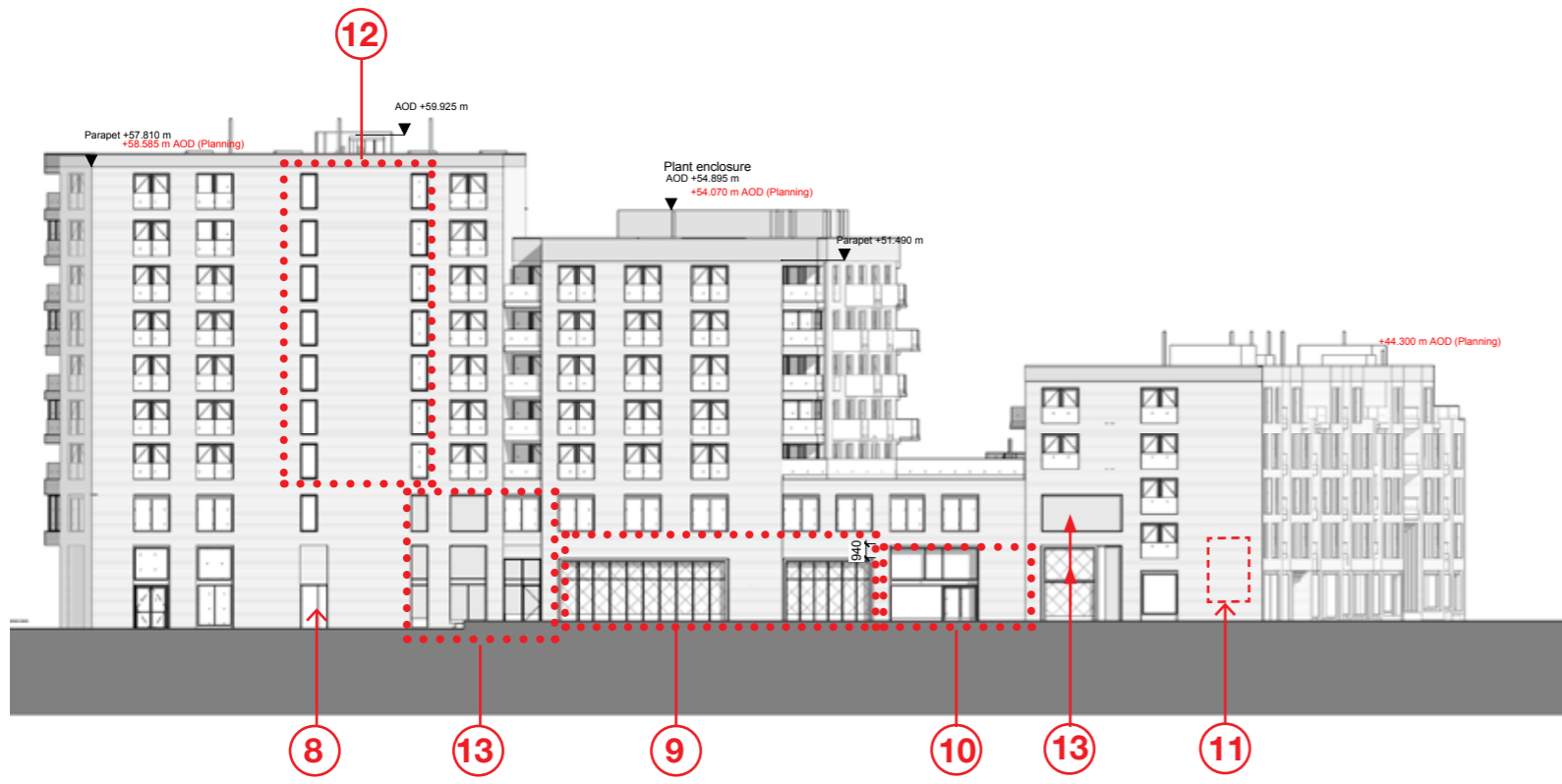
4.4 Revised Scheme



01 BUILDING C2_SOUTH ELEVATION



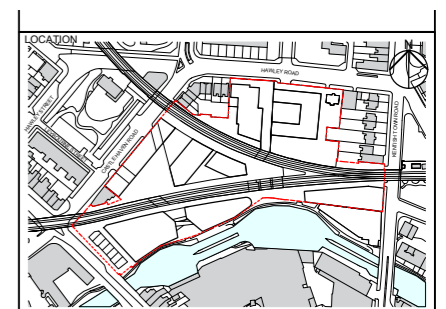
02 C2_EAST ELEVATION



03 BUILDING C2_NORTH ELEVATION

Revisions

- 1 Louvres relocated and replaced with windows to maximise cafe frontage
- 2 Change to retail shopfront design to be confirmed in planning condition discharge (refer to supporting (visuals in appendix)
- 3 Louvre relocated, window added to improve retail frontage
- 4 Additional entrance added to residential lobby to co-ordinate with security strategy
- 5 Windows added to improve daylighting to offices
- 6 Door changed to window to rationalise security strategy
- 7 Glass balustrade replaces terracotta baguettes to rationalise facade design
- 8 Fire escape to basement added to comply with fire regulations
- 9 Loading bay adjusted & shutter design improved. Refer to supporting visuals in Appendix
- 10 Retail frontage increased in width to meet condition 35 of the masterplan approval
- 11 Glazing omitted due to security requirements to allow for gates
- 12 Recessed brick and window configuration altered due to relocation of the stair cores
- 13 Louvres provision consolidated and relocated during design development to reduce presence on local space
- 14 Flues required to energy centre



ALLFORD HALL MONAGHAN MORRIS			
ARCHITECTS Ltd 5-23 OLD STREET, LONDON, EC1V 9HL TEL 020 7251 5261 FAX 020 7251 5123 WEB WWW.AHMM.CO.UK			
Job title CAMDEN LOCK VILLAGE			
drawing title / location BUILDING C2 PROPOSED GA ELEVATIONS			
drawn by	checked	scale	status
Author	Checker	: 250 @ A1	Stage E Issue
project	drawing no.	revision	
12001	CP_(00)_2010		