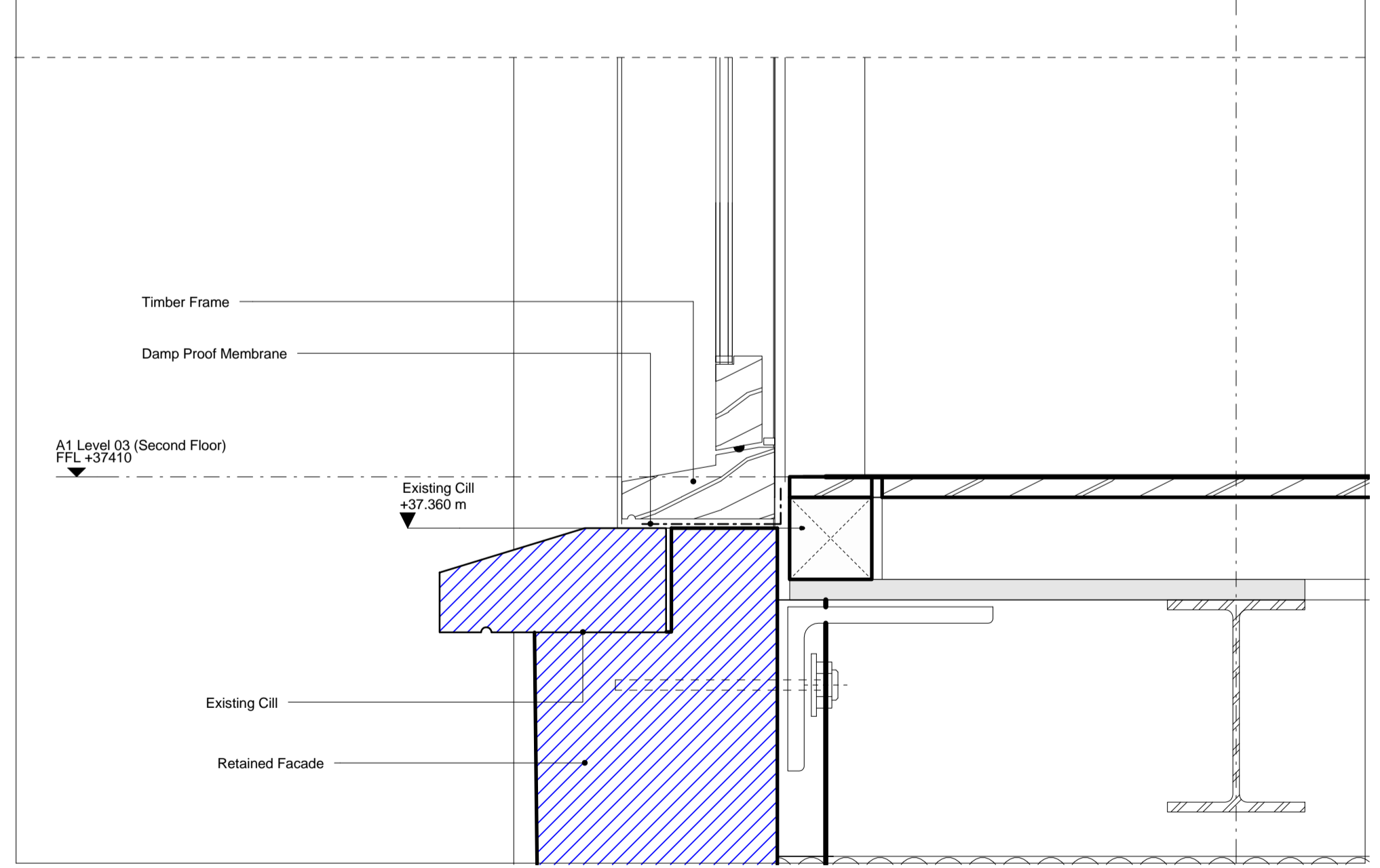
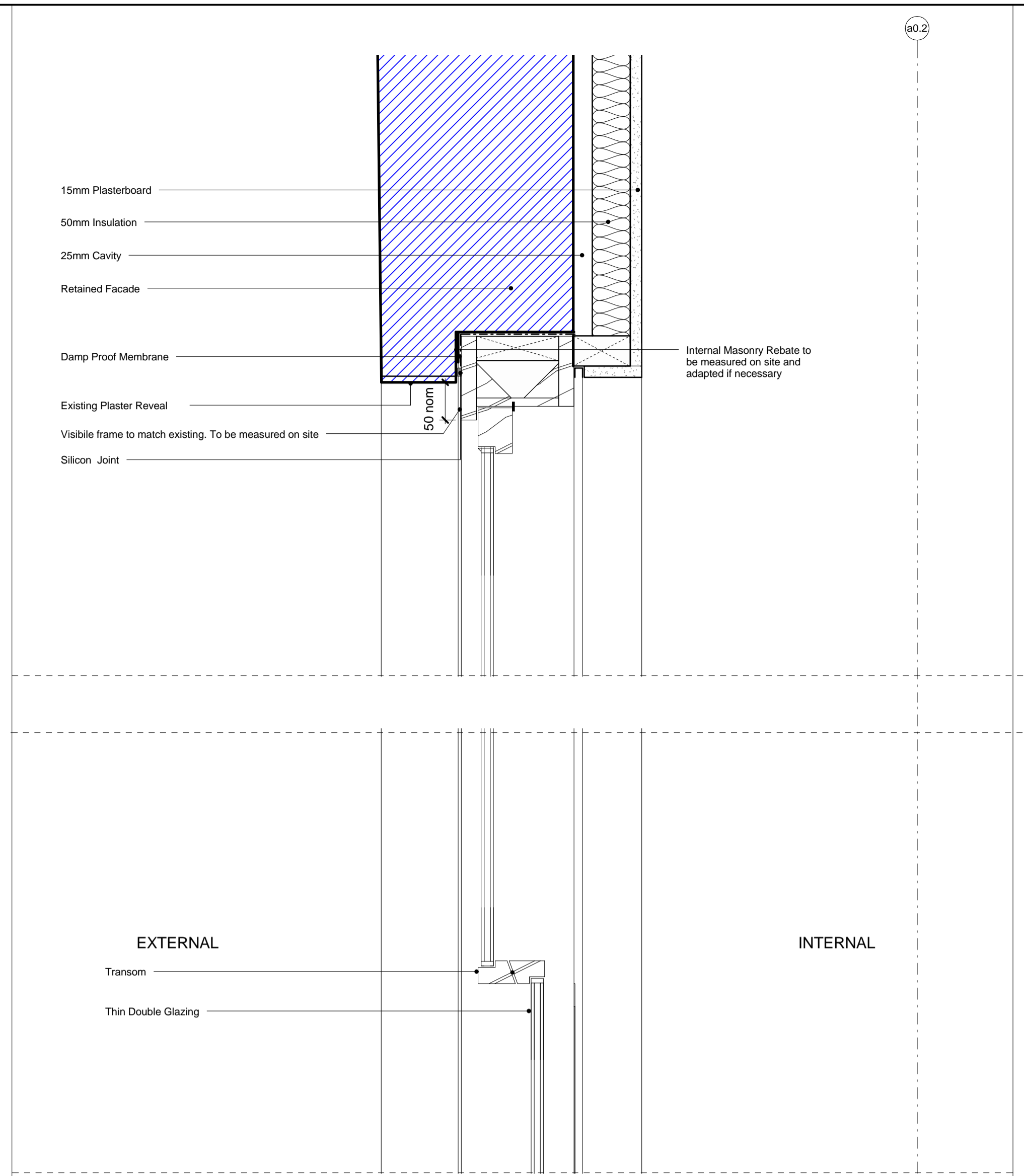
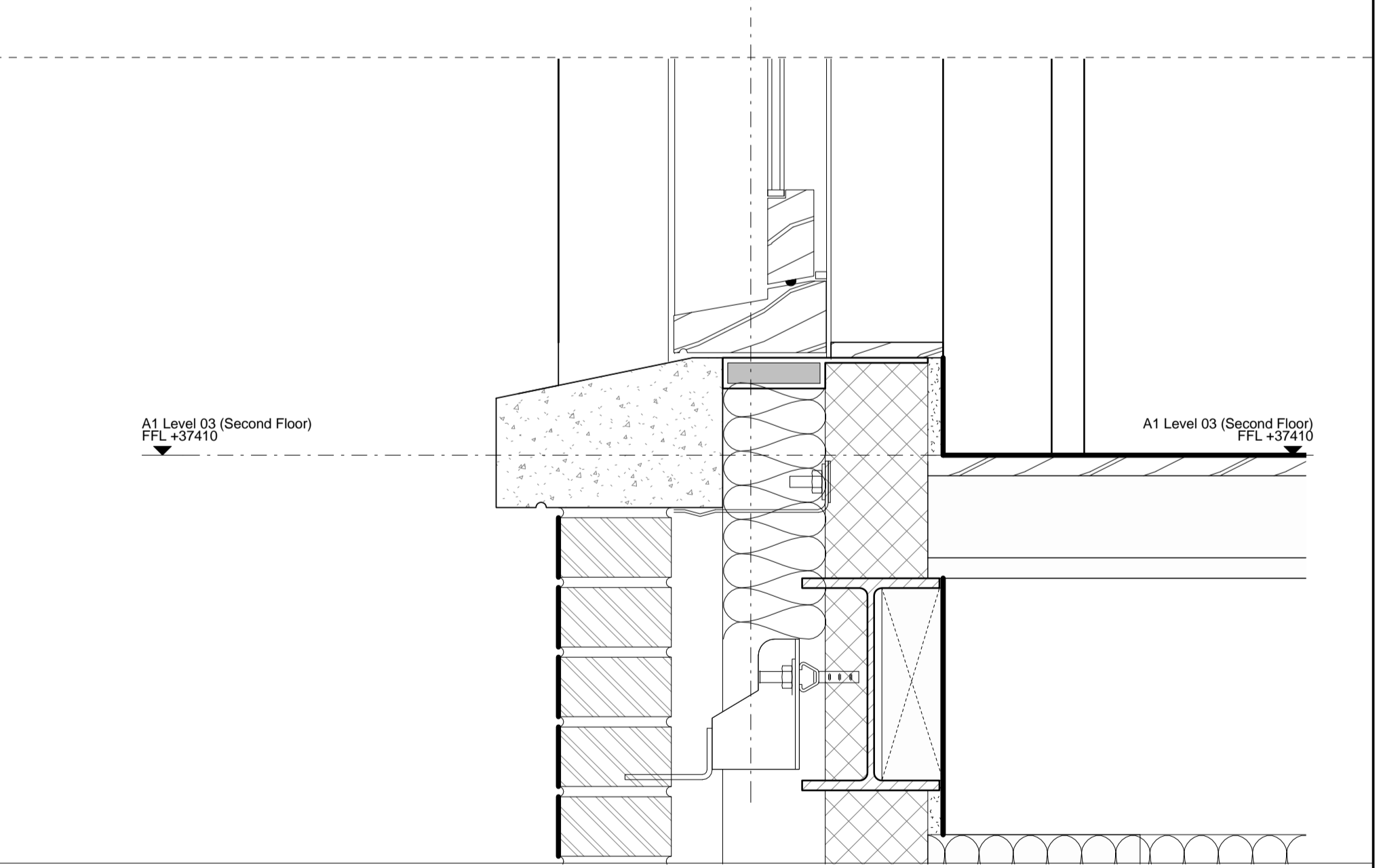
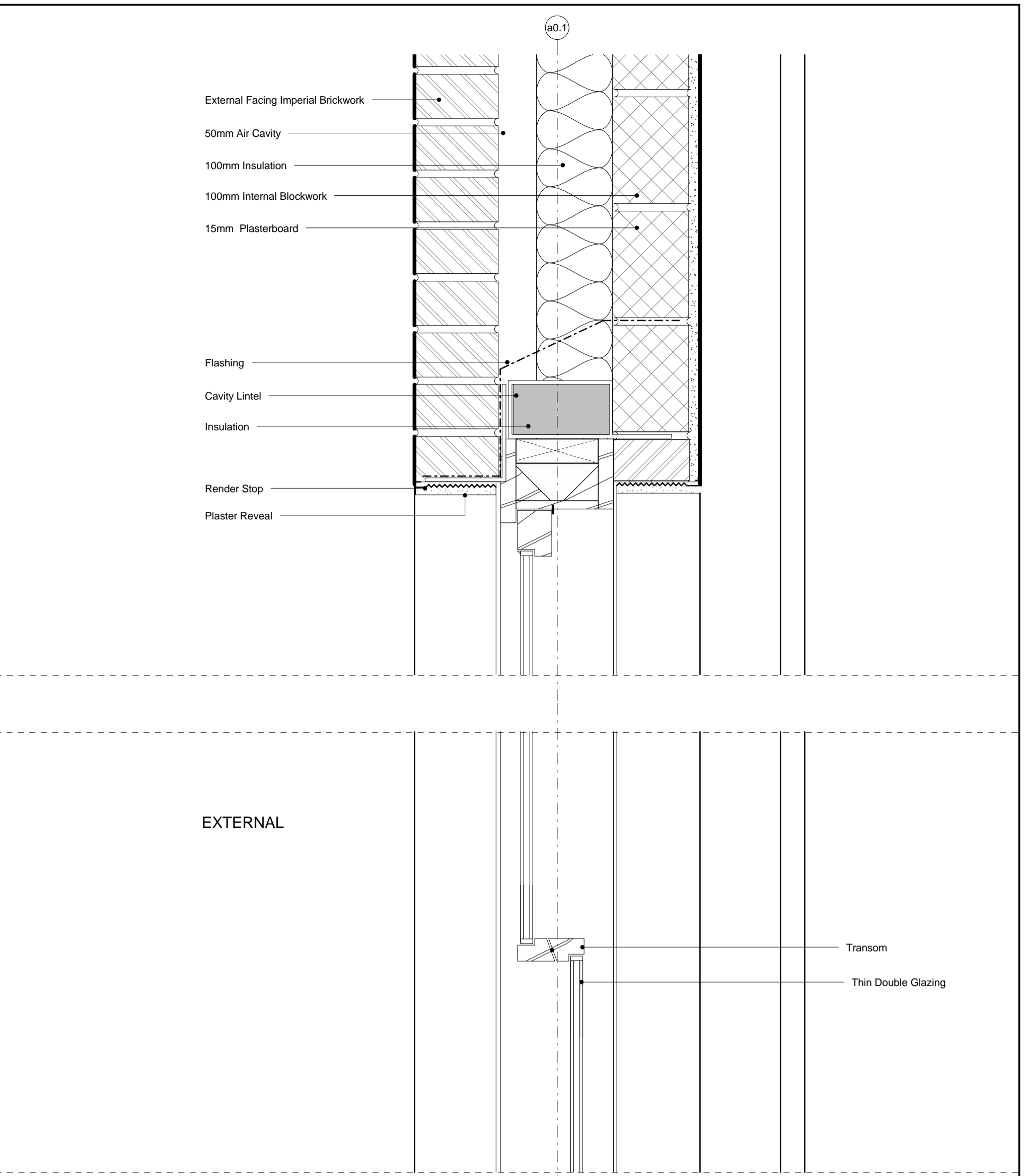


1 W-C - Typical Section Detail



2 W-A - Typical Section Detail



3 W-01 & W-02 - Typical Section Detail

KEY

	Retained Facade
	New wall

NOTE:

- Location of existing walls, openings & piers to be confirmed with Additional Survey
- Refer to A0_12 series for setout of new openings
- Grids shown indicative only
- All variation to above scope of works to be agreed prior to demolition
- All existing openings for windows to be measure on site prior to manufacture
- Variations to drawings to be agreed with Heritage Planner

Refer to T Sheet for specification clauses

REV	DATE	DESCRIPTION
T01	26/06/15	Stage E Issue
T02	18/12/15	Issued for ER's

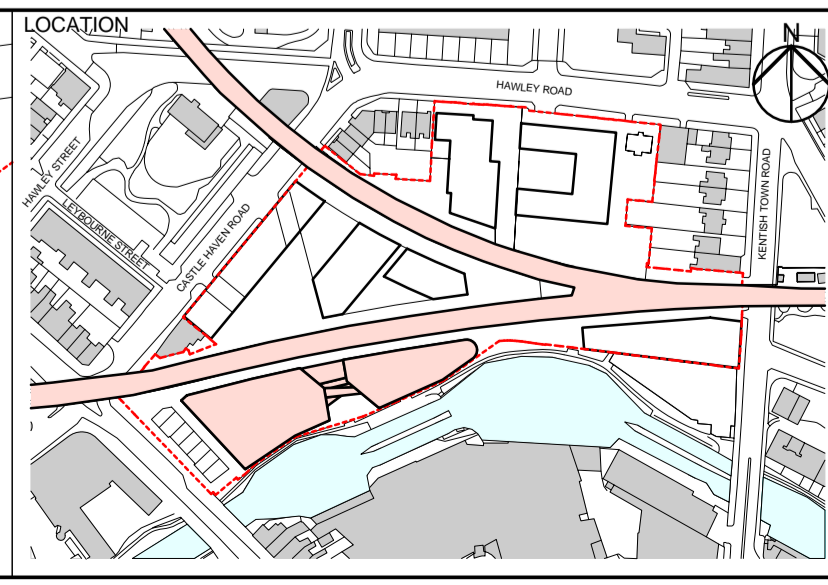
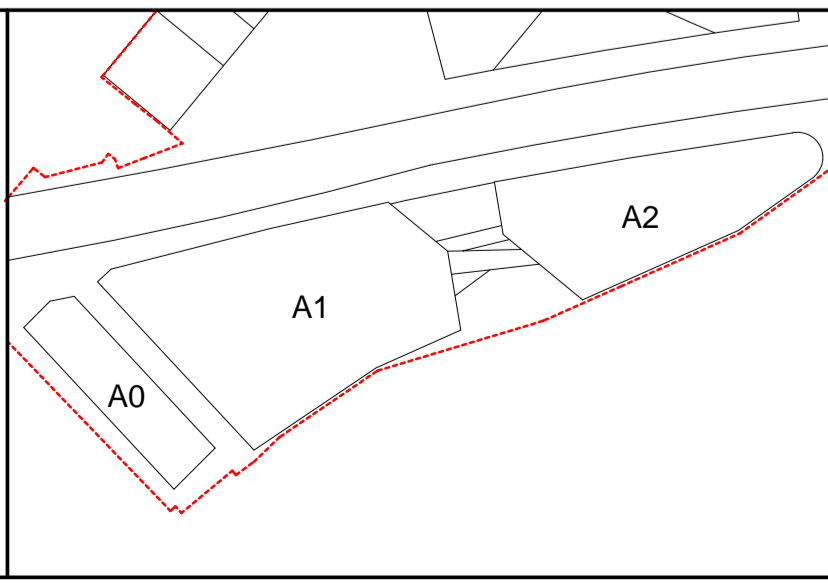
CONSULTANTS

CLIENT:	
CONTRACTOR:	
STRUCTURAL ENGINEER:	
MECHANICAL ENGINEER:	
COST CONSULTANT:	
PROJECT MANAGER:	
ACOUSTIC CONSULTANT:	
CLADDING CONSULTANT:	
SPECIFICATIONS CONSULTANT:	

NOTE

- Do not scale from this drawing.
- All dimensions to be checked on site by the contractor and such dimensions to be his responsibility.
- Report all drawing errors, omissions and discrepancies to the architect.
- This document may be issued in an uncontrolled CAD format to enable others to use it as background information to make alterations and/or additions. In that instance the file will be accompanied by a PDF version. It is for those making such alterations and additions to ensure that they make use of current background information.

AHMM Ltd accepts no liability for any such alterations or additions to the background information or arising out of changes to background information which occur prior to alterations of additions being made.



ALIFORD HALL MONAGHAN MORRIS
 ARCHITECTS Ltd
 5-23 OLD STREET, LONDON, EC1V 9HL
 TEL 020 7251 5261 FAX 020 7251 5123 WEB WWW.AHMM.CO.UK

job title
CAMDEN LOCK VILLAGE
 Typical Window Sections

drawing title / location

drawn by	checked	scale	status
WH	LMD	As indicated @ A1	Issued for ER's
project	zone	CI/SIB	drawing no.
14045	AX_(31)_	2001	

revision
 T01