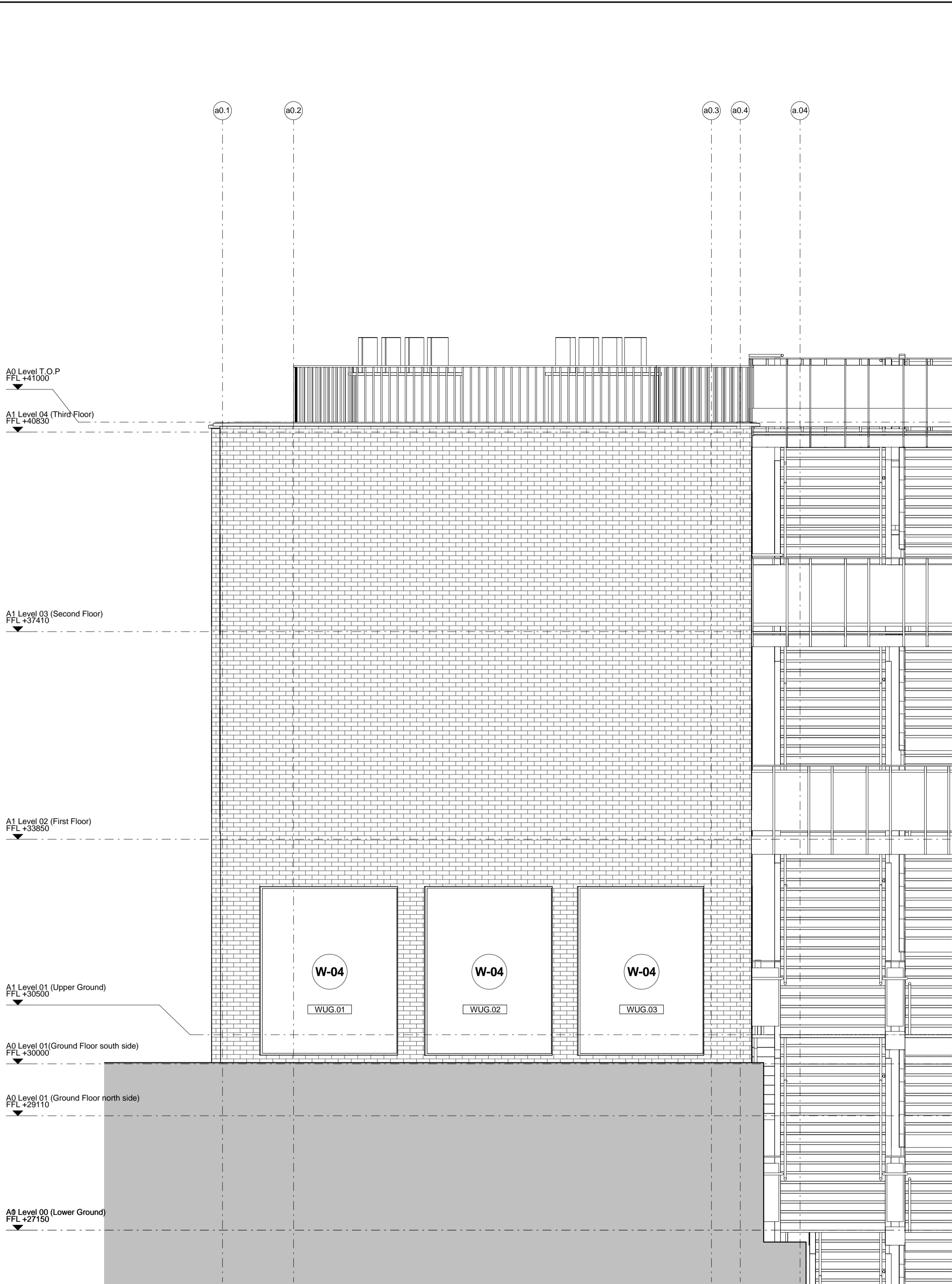


1 Window Scope - A0 North Elevation



2 Window Scope - A0 South Elevation

NOTES		NEW WINDOW TYPES		REV		DATE		DESCRIPTION		CONSULTANTS		NOTE		LOCATION		ALLFORD HALL MONAGHAN MORRIS	
<div>W-01</div>	Window Type	<div>W2.01</div>	Window Number	W-01	Timber Sash with double glazing	T01	26/06/15	Stage E Issue	1. Do not scale from this drawing.	STRUCTURAL ENGINEER: MECHANICAL ENGINEER: COST CONSULTANT: PROJECT MANAGER: ACOUSTIC CONSULTANT: CLADDING CONSULTANT: SPECIFICATIONS CONSULTANT:	1. Do not scale from this drawing. 2. All dimensions to be checked on site by the contractor and such dimensions to be his responsibility. 3. Report all drawing errors, omissions and discrepancies to the architect. 4. This document may be issued in an uncontrolled CAD format to enable others to use it as background information to make alterations and/or additions. In that instance the file will be accompanied by a PDF version. It is for those making such alterations and additions to ensure that they make use of current background information. AHMM Ltd accepts no liability for any such alterations or additions to the background information or arising out of changes to background information which occur prior to alterations of additions being made.			ARCHITECTS Ltd 5-23 OLD STREET, LONDON, EC1V 9HL TEL 020 7251 5261 FAX 020 7251 5123 WEB WWW.AHMM.CO.UK			
	<div>EW2.01</div>		Replacement Windows	W-02	Timber Sash with double glazing	T02	18/12/15	Issued for ER's									
			1. Final Design for Shopfront Glazing subject to Council Review 2. Refer to AX_(32) series for doors to A0 3. Refer to AX_(31)_1000 for new windows 4. Refer to MX_(71) series for gate details 4. All existing openings for windows to be measure on site prior to manufacture 5. Variations to drawings to be agreed with Heritage Planner REPLACEMENT WINDOW TYPES W-A Timber Sash with double glazing W-B Timber Sash with double glazing W-C French Doors with Fanlight, double glazing	W-03 Fixed glazing W-04 Operable shopfront glazing W-05 Crittal windows W-06 Hansen Millenium (Refer to 21 series for details) W-07 Hansen Millenium (Refer to 21series for details) W-08 Rooflight System (Refer to 27 series for details) W-09 Crittal Window adjacent to Stair 02 W-10 Fixed Glazing adjacent to Stair 03 W-10 Fixed Glazing adjacent to Platform Lift	Refer to T Sheet for specification clauses												