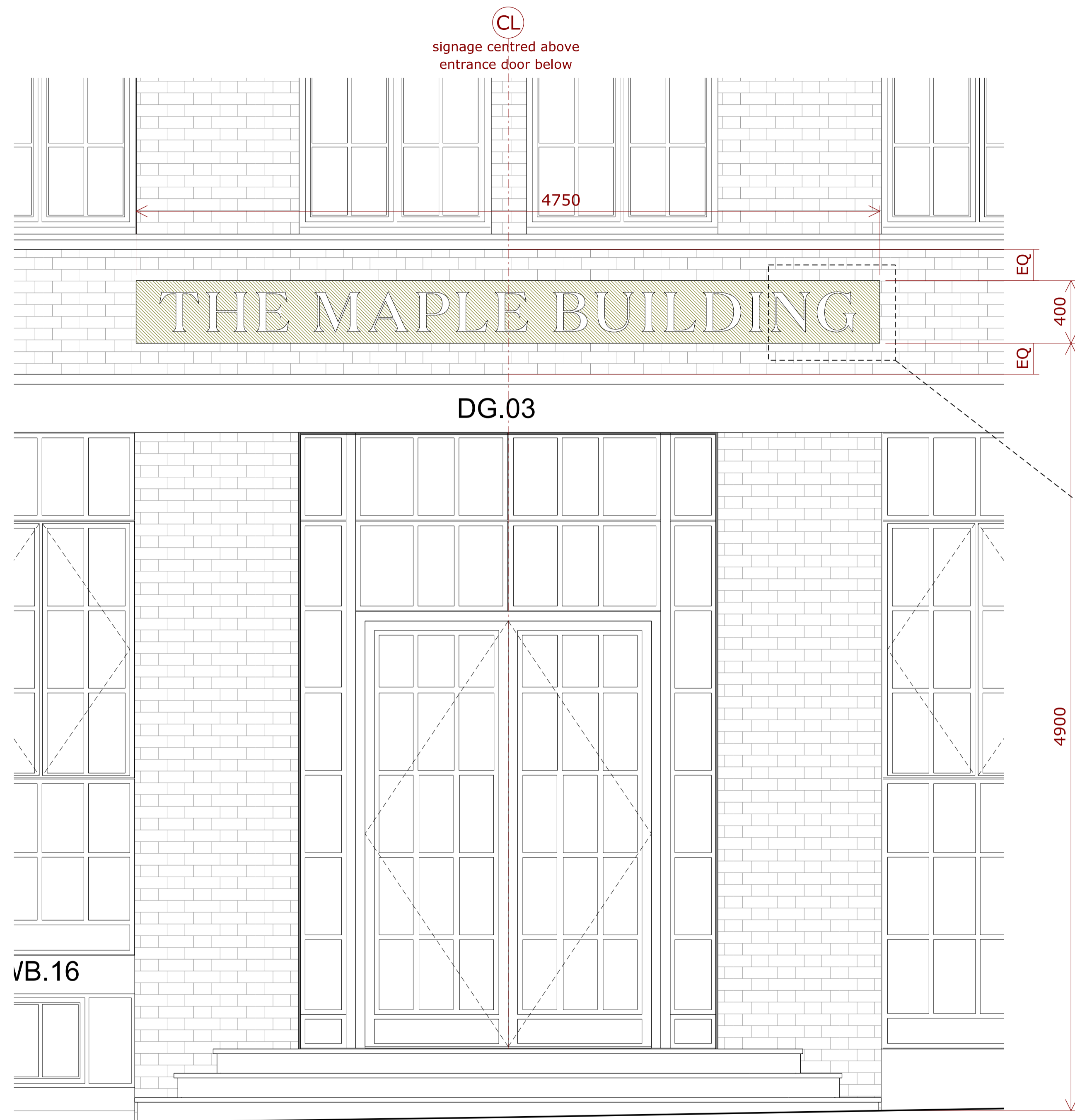


PLANNING

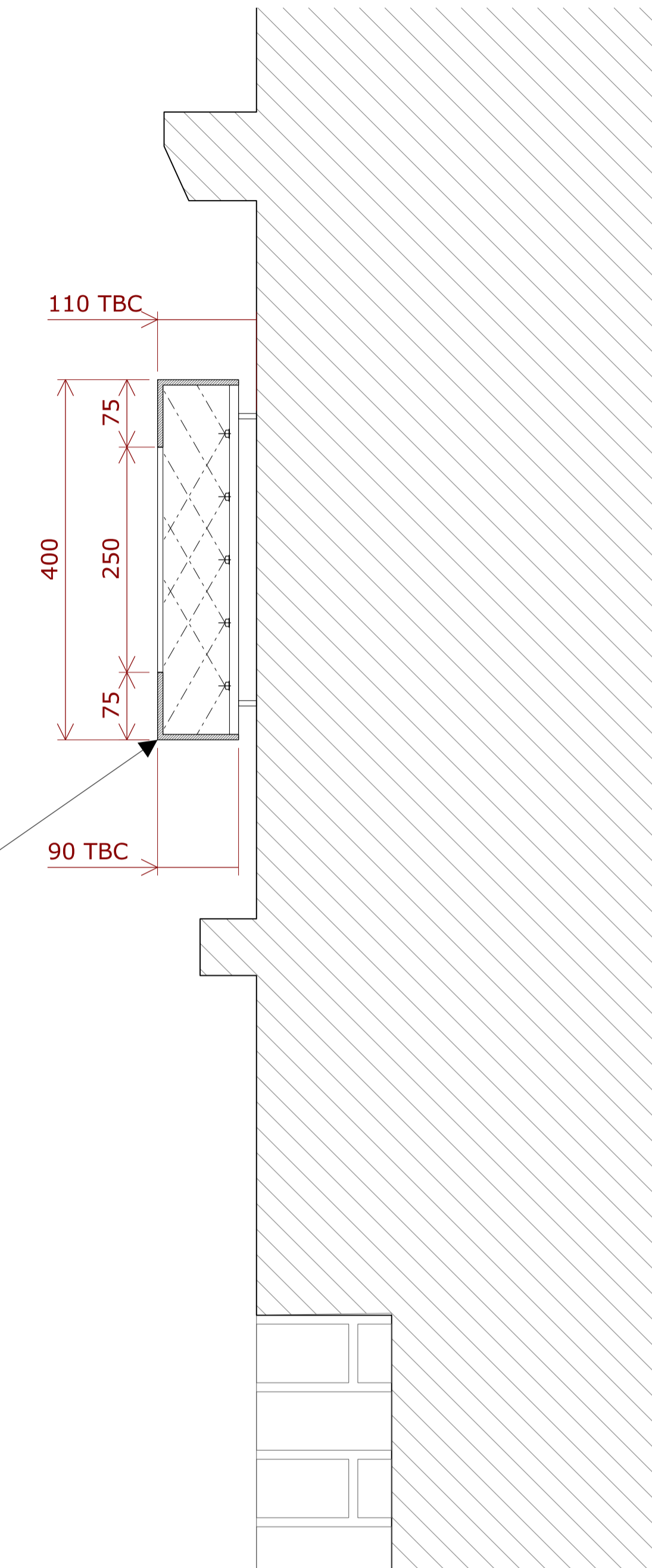


1 East elevation as proposed
152_438 Scale 1:20 @ A1



Proposed Signage:
Fascia sign formed in folded metal signage tray in bronze finish with 250mm high 'The Maple Building' lettering fret cut to centre with opal diffuser inserts.
Suitably fixed to existing masonry facade on pins in finish to match signage.
Internally rear illuminated with IP rated LED strip lighting suitably located to ensure even light distribution and illumination of lettering.

2 Sectional Detail and Part Elevation
152_438 Scale 1:5 @ A1



P1	15.03.2016	Planning Issue 1
Rev	Date	Note

Acoustic Engineer
Gillieron Scott Acoustic Design

Interior Design
Gordon-Duff + Linton

Project Management / Quantity Surveyor
Stace LLP

Services
Synergy Consulting

Structures
Fluid Structures

Client
Linton Property Developments Ltd
The Linton Group,
14 Basil Street, Knightsbridge, London, SW3 1AJ

Project title
LINTON HOUSE

Drawing Title

External Signage

Scale @ A1 **1:20 & 1:5 @A1**

Project No.	Drawing no.	Revision
152	438	P1

Status	Date of Issue
PLANNING	MAR 2016



Clive Sall Architecture Ltd.

2 Providence Yard
Ezra Street
London E2 7RJ

Copyright CLIVE SALL ARCHITECTURE LTD

