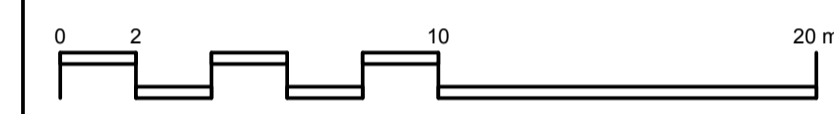
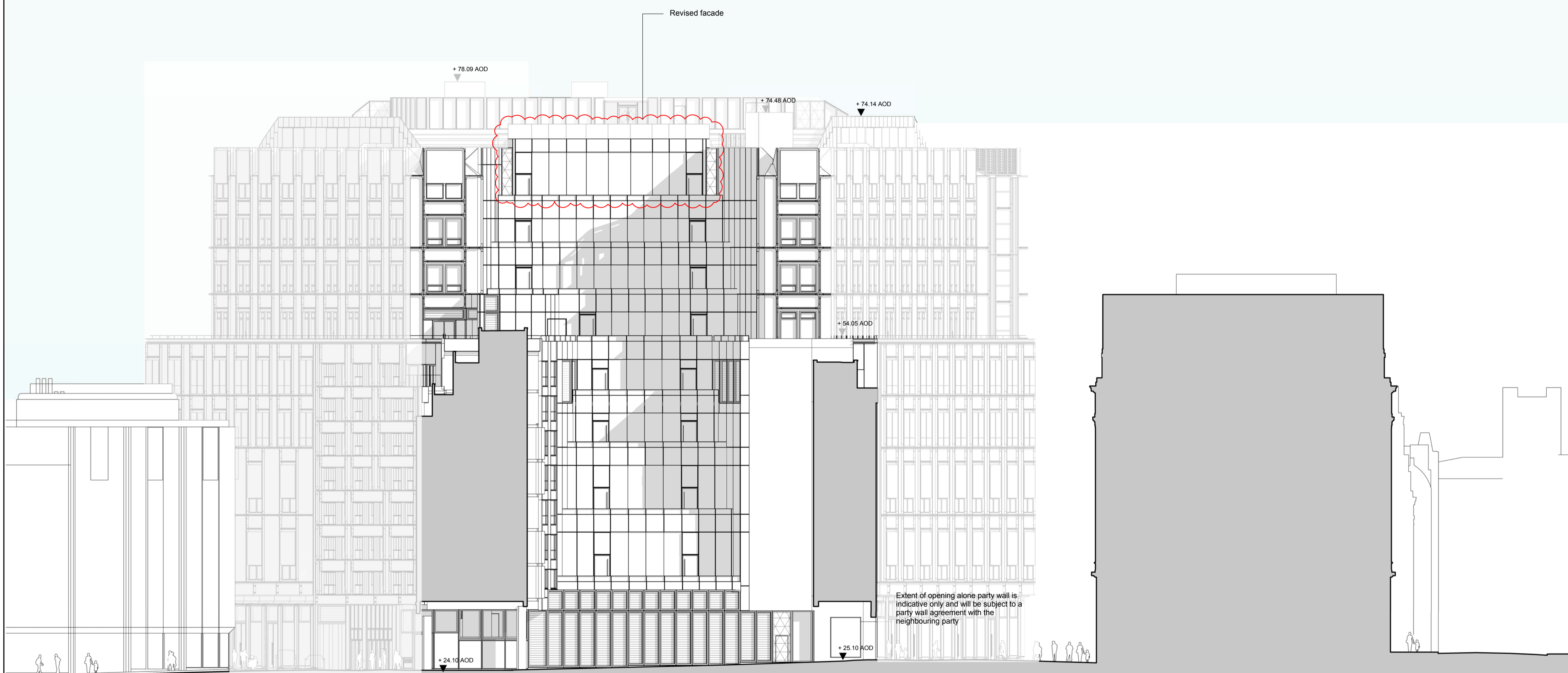


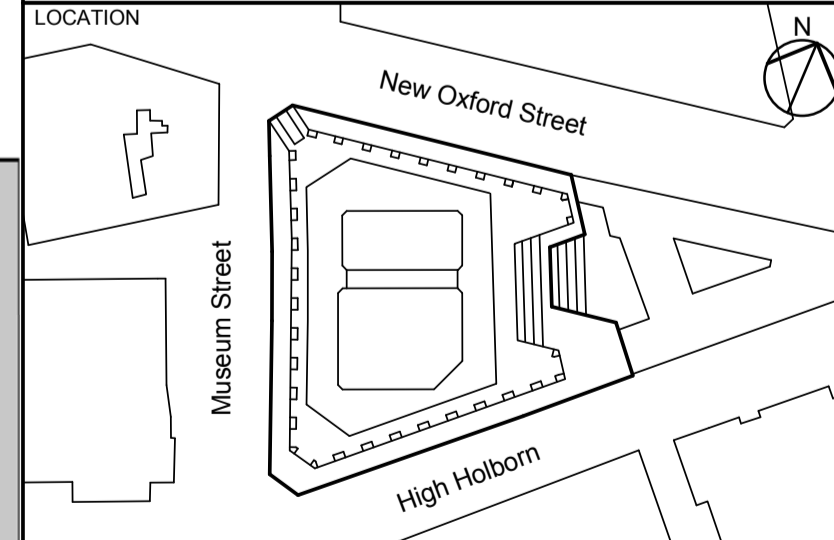
Plant shown are indicative only



| REV | DATE | DESCRIPTION |
|-----|--------|---------------------|
| P01 | 300514 | PLANNING DRAFT |
| P02 | 030714 | PLANNING DRAFT |
| P03 | 260814 | PLANNING SUBMISSION |
| P04 | 051214 | PLANNING AMENDMENT |
| P05 | 080116 | NMA 01 |
| P06 | 080416 | NMA 02 |

| CONSULTANTS | |
|----------------------|------------------------|
| CLIENT: | New Oxford Street Ltd. |
| CONTRACTOR: | Laing O'Rourke |
| PROJECT MANAGER: | Gardiner & Theobald |
| STRUCTURAL ENGINEER: | Anup Structures |
| MECHANICAL ENGINEER: | Anup M&E |
| ACOUSTIC CONSULTANT: | Anup Acoustics |
| CLADDING CONSULTANT: | Anup Facades |
| COST CONSULTANT: | Arcadis |
| LANDSCAPE ARCHITECT: | Gillespies |

- NOTE
1. Do not scale from this drawing.
 2. All dimensions to be checked on site by the contractor and such dimensions to be his responsibility. Report all drawing errors, omissions and discrepancies to the architect.
 3. This document may be issued in an uncontrolled CAD format to enable others to use it as background information to make alterations and/or additions. In that instance the file will be accompanied by a PDF version. It is for those making such alterations and additions to ensure that they make use of current background information.
 4. AHMM Ltd accepts no liability for any such alterations or additions to the background information or arising out of changes to background information which occur prior to alterations of additions being made.
 5. Landscape shown is indicative only. Please refer to Landscape Consultant's report for details.



ALFORD HALL MONAGHAN MORRIS
 ARCHITECTS Ltd
 MORELANDS, 5-23 OLD STREET LONDON EC1V 9HL
 TEL 020 7251 5261 FAX 020 7251 5123 WEB WWW.AHMM.CO.UK

job title
The Post Building
 drawing title / location
East Elevation - Proposed

| drawn by | checked | scale | status |
|----------|-------------|--------------|----------|
| FB | MM | 1 : 200 @ A1 | PLANNING |
| project | drawing no. | revision | |
| 12141 | PL_(00)_303 | P06 | |