

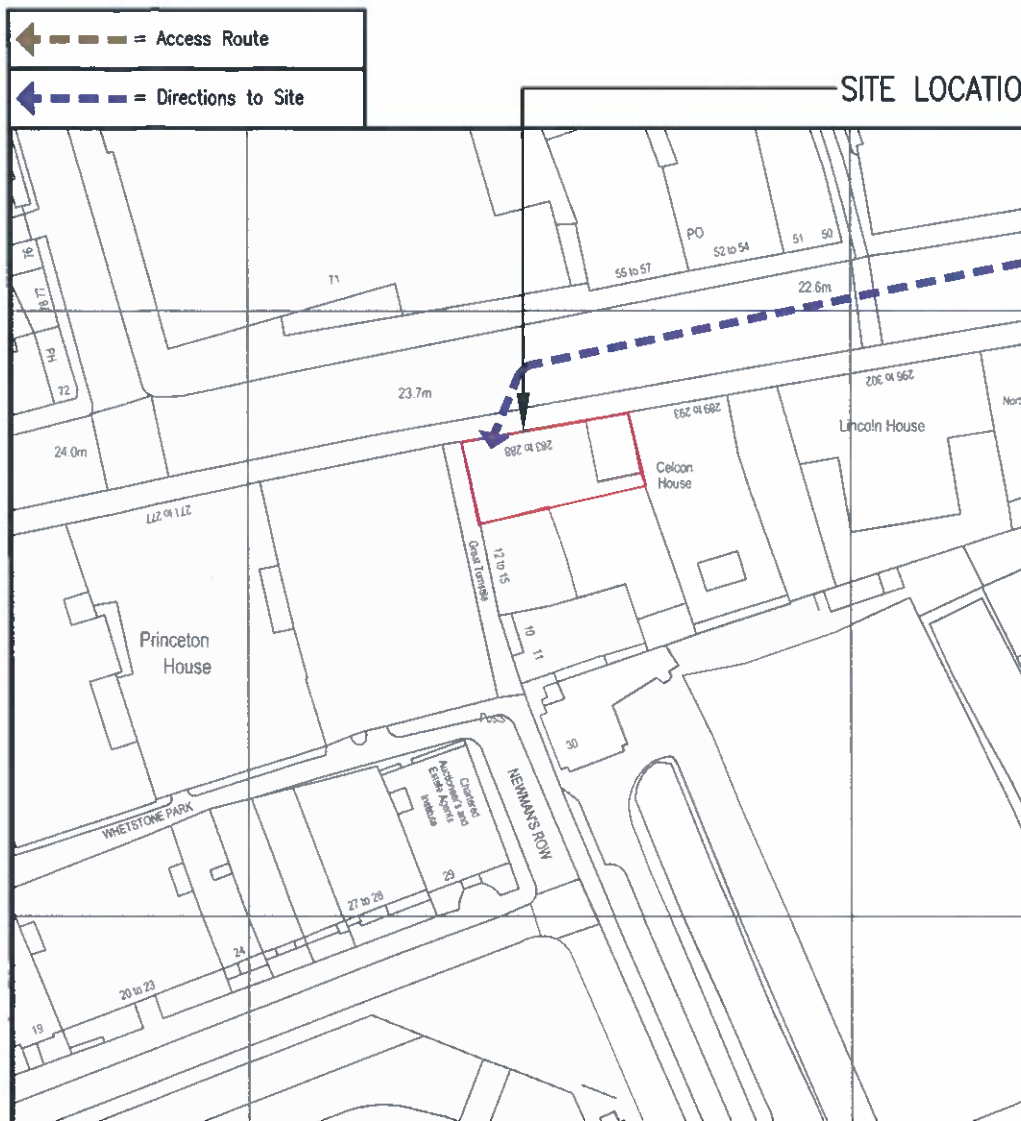


SITE LOCATION

0 1km 2km  
Scale

**SITE LOCATION**  
(Scale 1:50000)

Ordnance Survey map extract based upon Landranger map series with the permission of the controller of Her Majesty's Stationery Office  
Mono Consultants Limited licence no. ES100017753  
Crown copyright.



SITE LOCATION

**DETAILED SITE LOCATION**  
(Scale 1:1250)

Based upon Ordnance Survey map extract with the permission of the Controller of Her Majesty's Stationery Office.  
Crown copyright.  
Mono Consultants Limited licence no. ES100017753  
Promap licence no. A152065A0001



SITE PHOTOGRAPH

Notes:  
1 ALL DIMENSIONS ARE IN MM UNLESS NOTED OTHERWISE

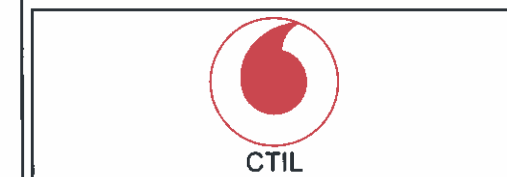
N.G.R. E: 530862 N: 181571

**DIRECTIONS:**  
FROM THE END OF THE M4 HEAD SOUTH EAST ON THE A4 TOWARDS THE A3220 WARWICK ROAD. AT THE ROUNDABOUT TAKE THE 2ND EXIT ONTO THE A40. CONTINUE ONTO MARYLEBONE ROAD AND TURN RIGHT AT EVERS Holt STREET. FOLLOW THE A4200 ENTERING TOLL ZONE (WOBURN PLACE). TURN LEFT AT THE A40/THEOBOLDS ROAD, RIGHT AT DRAKE STREET AND ARRIVE AT HIGH HOLBORN.

A	Issued for Approval	AJM	PM	01.02.16
REV	MODIFICATION	BY	CH	DATE

**mono #**

MONO CONSULTANTS LIMITED  
No. 58 Cygnet Court  
Timothy's Bridge Road  
Stratford-upon-Avon  
Warwickshire  
CV37 9NW  
t. 44 (0)1789 206500  
f. 44 (0)1789 206529  
www.monoconsultants.com



Cell Name	Opt
WHERSTONE PARK	SOR 7516

Cell ID No		
CTIL	Host	Sharer
13733922	(TEF) 004868	(VF) 80449

**Site Address / Contact Details**

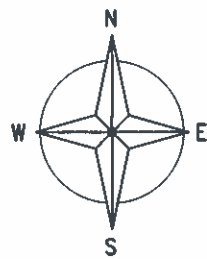
NEW PENDERAL HOUSE  
283 HIGH HOLBORN  
LONDON  
GREATER LONDON  
WC1R 5DJ

Drawing Title: SITE LOCATION MAPS

Purpose of issue: **PLANNING**

Drawing Number: 100

Scale:	As Shown	Drawn:	AJM	Date:	01.02.16	Issue:	A
Checked:	PM	Date:	01.02.16	Approved:	AKB	Date:	01.02.16



EXISTING G8x1 ROXTEC GLAND  
INSTALLED WITHIN BRICKWORK

EXISTING ROOF MOUNTED CABLE TRAY

EXISTING HOOPED ACCESS LADDER

EXISTING FREE STANDING HANDRAIL

EXISTING TEF 2G AND DUAL SECTOR  
3G ANTENNAS MOUNTED ON YOKE  
BRACKETS FIXED TO ELEVATION  
MOUNTED STEELWORK

EXISTING '3' ANTENNA MOUNTED  
ON WALL MOUNTED POLE

EXISTING ROOF ACCESS DOOR

EXISTING TEF 2G AND DUAL SECTOR  
3G ANTENNAS MOUNTED ON YOKE  
BRACKETS FIXED TO ELEVATION  
MOUNTED STEELWORK

HIGH HOLBORN

TARMAC FOOTPATH

NORTH ELEVATION

GROUND LEVEL  
00.0m

LOWER ROOF  
LEVEL

UPPER ROOF LEVEL  
+26.6m

MAIN ROOF LEVEL  
+23.5m

EXISTING DISUSED ANTENNA  
SUPPORT POLE FIXED TO WALL

EXISTING HOOPED ACCESS  
LADDER AND HANDRAIL

EXISTING VF ANTENNA ON A  
FACE MOUNTED SUPPORT  
POLE AND YOKE BRACKET  
C/W 1NO. ERICSSON RRU  
INSTALLED ON ANTENNA  
SUPPORT POLE

EXISTING FREE  
STANDING HANDRAIL  
EXISTING TEF 2G AND DUAL  
SECTOR 3G ANTENNAS  
MOUNTED ON YOKE BRACKETS  
FIXED TO ELEVATION  
MOUNTED STEELWORK

EXISTING '3' ANTENNA MOUNTED  
ON FREESTANDING SLEDGE

EXISTING '3' ANTENNA  
MOUNTED ON  
FREESTANDING SLEDGE

EXISTING '3' ANTENNA MOUNTED  
ON WALL MOUNTED POLE

EXISTING 1NO. ERICSSON RRU  
INSTALLED ON ANTENNA  
SUPPORT POLE

EXISTING VF ANTENNA ON A  
FACE MOUNTED SUPPORT  
POLE AND YOKE BRACKET  
C/W 1NO. ERICSSON RRU  
INSTALLED ON ANTENNA  
SUPPORT POLE

EXISTING UNUSED 150mm  
WIDE CABLE TRAY

EXISTING TEF EQUIPMENT ROOM  
AREA INDICATED BY HATCHING

Notes:  
1 ALL DIMENSIONS ARE IN MM UNLESS NOTED OTHERWISE

N.G.R. E: 530862 N: 181571

REV	MODIFICATION	BY	CH	DATE
B	Notes amended	BCL	SY	29.02.16
A	Issued for Approval	AJM	PM	01.02.16

**mono** #

MONO CONSULTANTS LIMITED  
No. 58 Cygnet Court  
Timothy's Bridge Road  
Stratford-upon-Avon  
Warwickshire  
CV37 9NW  
t. 44 (0)1789 206500  
f. 44 (0)1789 206529  
www.monoconsultants.com



Cell Name	Opt
WHERSTONE PARK	SOR 7516

Cell ID No		
CTIL	Host	Sharer
13733922	(TEF) 004868	(VF) 80449

Site Address / Contact Details

NEW PENDERAL HOUSE  
283 HIGH HOLBORN  
LONDON  
GREATER LONDON  
WC1R 5DJ

Drawing Title: EXISTING SITE PLAN

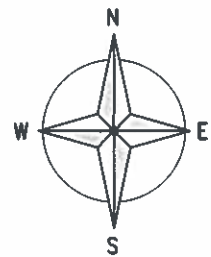
Purpose of issue: PLANNING

Drawing Number: 201

Scale: As Shown	Drawn: AJM	Date: 01.02.16	Issue:
Checked: PM	Date: 01.02.16	Approved: AKB	Date: 01.02.16
			B

EXISTING SITE PLAN  
(1:125)

The drawings comply with TEF & Vodafone Standard ICNIRP guidelines.  
Designed in accordance with Cornerstone document: CORN/09/006



EXISTING G8x1 ROXTEC GLAND INSTALLED WITHIN BRICKWORK

EXISTING ROOF MOUNTED CABLE TRAY

EXISTING HOOPED ACCESS LADDER

EXISTING FREE STANDING HANDRAIL

EXISTING TEF 2G AND DUAL SECTOR 3G ANTENNAS MOUNTED ON YOKE BRACKETS FIXED TO ELEVATION MOUNTED STEELWORK

EXISTING '3' ANTENNA MOUNTED ON WALL MOUNTED POLE

EXISTING ROOF ACCESS DOOR

EXISTING TEF 2G AND DUAL SECTOR 3G ANTENNAS MOUNTED ON YOKE BRACKETS FIXED TO ELEVATION MOUNTED STEELWORK

HIGH HOLBORN

TARMAC FOOTPATH

NORTH ELEVATION

GROUND LEVEL 00.0m

LOWER ROOF LEVEL

UPPER ROOF LEVEL +26.6m

MAIN ROOF LEVEL +23.5m

EXISTING DISUSED ANTENNA SUPPORT POLE FIXED TO WALL  
EXISTING 300mm WIDE CABLE TRAY TO ANTENNA LOCATIONS FROM ROXTEC GLAND IN PLANTROOM WALL

EXISTING HOOPED ACCESS LADDER AND HANDRAIL

EXISTING VF ANTENNA ON A FACE MOUNTED SUPPORT POLE AND YOKE BRACKET C/W 1NO. ERICSSON RRU INSTALLED ON ANTENNA SUPPORT POLE

PROPOSED VF MULTI-BAND ANTENNA, FIXED TO EXISTING SPARE ANTENNA SUPPORT POLE, C/W 1NO. RRU'S

EXISTING FREE STANDING HANDRAIL

EXISTING TEF 2G AND DUAL SECTOR 3G ANTENNAS MOUNTED ON YOKE BRACKETS FIXED TO ELEVATION MOUNTED STEELWORK

EXISTING '3' ANTENNA MOUNTED ON FREESTANDING SLEDGE

EXISTING '3' ANTENNA MOUNTED ON FREESTANDING SLEDGE

EXISTING '3' ANTENNA MOUNTED ON WALL MOUNTED POLE

EXISTING 1NO. ERICSSON RRU INSTALLED ON ANTENNA SUPPORT POLE

EXISTING VF ANTENNA ON A FACE MOUNTED SUPPORT POLE AND YOKE BRACKET C/W 1NO. ERICSSON RRU INSTALLED ON ANTENNA SUPPORT POLE

PROPOSED VF MULTI-BAND ANTENNA, FIXED TO EXISTING SPARE ANTENNA SUPPORT POLE, C/W 1NO. RRU'S

EXISTING UNUSED 150mm WIDE CABLE TRAY

EXISTING TEF EQUIPMENT ROOM AREA INDICATED BY HATCHING

Notes:  
1 ALL DIMENSIONS ARE IN MM UNLESS NOTED OTHERWISE

N.G.R. E: 530862 N: 181571

B	Notes amended	BCL	SY	29.02.16
A	Issued for Approval	AJM	PM	01.02.16

REV	MODIFICATION	BY	CH	DATE
-----	--------------	----	----	------

**mono** #

MONO CONSULTANTS LIMITED  
No. 58 Cygnet Court  
Timothy's Bridge Road  
Stratford-upon-Avon  
Warwickshire  
CV37 9NW  
t. 44 (0)1789 206500  
f. 44 (0)1789 206529  
www.monoconsultants.com



Cell Name	Opt
WHERSTONE PARK	SOR 7516

Cell ID No		
CTIL	Host	Sharer
13733922	(TEF) 004868	(VF) 80449

Site Address / Contact Details

NEW PENDERAL HOUSE  
283 HIGH HOLBORN  
LONDON  
GREATER LONDON  
WC1R 5DJ

Drawing Title: PROPOSED SITE PLAN

Purpose of issue: PLANNING

Drawing Number: 202

Scale:	As Shown	Drawn:	AJM	Date:	01.02.16	Issue:	B
Checked:	PM	Date:	01.02.16	Approved:	AKB	Date:	01.02.16

PROPOSED SITE PLAN  
(1:125)

The drawings comply with TEF & Vodafone Standard ICNIRP guidelines.  
Designed in accordance with Cornerstone document: CORN/09/006

The drawings comply with TEF & Vodafone Standard ICNIRP guidelines.  
Designed in accordance with Cornerstone document: CORN/09/006

Notes:  
1 ALL DIMENSIONS ARE IN MM UNLESS NOTED OTHERWISE

N.G.R. E: 530862 N: 181571

EXISTING VF ANTENNA ON A FACE MOUNTED SUPPORT POLE AND YOKE BRACKET C/W 1NO. ERICSSON RRU INSTALLED ON ANTENNA SUPPORT POLE

EXISTING TEF 2G AND DUAL SECTOR 3G ANTENNAS MOUNTED ON YOKE BRACKETS FIXED TO ELEVATION MOUNTED STEELWORK

ROOF LEVEL +26.6m AGL

EXISTING '3' ANTENNAS MOUNTED ON FREESTANDING SLEDGES

EXISTING HOOPED ACCESS LADDER

ROOF LEVEL +23.5m AGL

EXISTING VF ANTENNA ON A FACE MOUNTED SUPPORT POLE AND YOKE BRACKET C/W 1NO. ERICSSON RRU INSTALLED ON ANTENNA SUPPORT POLE

EXISTING '3' ANTENNAS MOUNTED ON POLE

EXISTING DISUSED ANTENNA SUPPORT POLE FIXED WALL

TOP OF EXISTING ANTENNAS 29.3m AGL

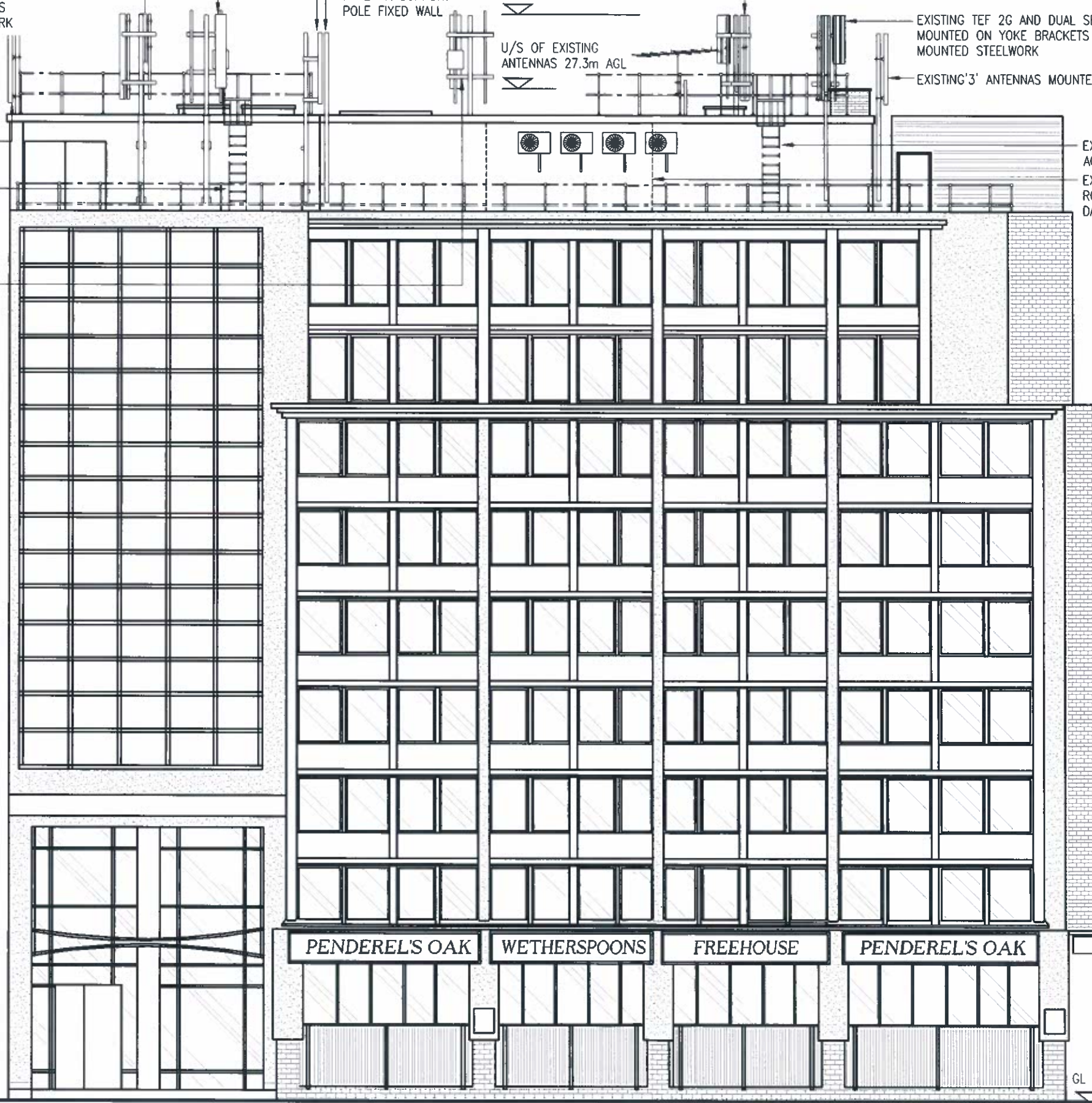
U/S OF EXISTING ANTENNAS 27.3m AGL

EXISTING TEF 2G AND DUAL SECTOR 3G ANTENNAS MOUNTED ON YOKE BRACKETS FIXED TO ELEVATION MOUNTED STEELWORK

EXISTING TEF 2G AND DUAL SECTOR 3G ANTENNAS MOUNTED ON YOKE BRACKETS FIXED TO ELEVATION MOUNTED STEELWORK

EXISTING '3' ANTENNAS MOUNTED ON POLE

EXISTING HOOPED ACCESS LADDER  
EXISTING TEF EQUIPMENT ROOM AREA INDICATED BY DASHED LINES



EXISTING NORTH ELEVATION  
(1:125)

B	Notes amended	BCL	SY	29.02.16
A	Issued for Approval	AJM	PM	01.02.16
REV	MODIFICATION	BY	CH	DATE

**mono** #

MONO CONSULTANTS LIMITED  
No. 58 Cygnet Court  
Timothy's Bridge Road  
Stratford-upon-Avon  
Warwickshire  
CV37 9NW  
t. 44 (0)1789 206500  
f. 44 (0)1789 206529  
www.monoconsultants.com



Cell Name	Opt
WHERSTONE PARK	SOR 7516

Cell ID No		
CTIL	Host	Sharer
13733922	(TEF) 004868	(VF) 80449

Site Address / Contact Details

NEW PENDEREL HOUSE  
283 HIGH HOLBORN  
LONDON  
GREATER LONDON  
WC1R 5DJ

Drawing Title: EXISTING SITE ELEVATION

Purpose of issue: PLANNING

Drawing Number: 301

Scale:	As Shown	Drawn:	AJM	Date:	01.02.16	Issue:	B
Checked:	PM	Date:	01.02.16	Approved:	AKB	Date:	01.02.16

The drawings comply with TEF & Vodafone Standard ICNIRP guidelines.  
Designed in accordance with Cornerstone document: CORN/09/006

Notes:  
1 ALL DIMENSIONS ARE IN MM UNLESS NOTED OTHERWISE

N.G.R. E: 530862 N: 181571

PROPOSED VF MULTI-BAND ANTENNA, FIXED TO EXISTING SPARE ANTENNA SUPPORT POLE, C/W 1NO. RRU'S

EXISTING TEF 2G AND DUAL SECTOR 3G ANTENNAS MOUNTED ON YOKE BRACKETS FIXED TO ELEVATION MOUNTED STEELWORK

ROOF LEVEL +26.6m AGL

EXISTING '3' ANTENNAS MOUNTED ON FREESTANDING SLEDGES

EXISTING HOOPED ACCESS LADDER

ROOF LEVEL +23.5m AGL

EXISTING VF ANTENNA ON A FACE MOUNTED SUPPORT POLE AND YOKE BRACKET C/W 1NO. ERICSSON RRU INSTALLED ON ANTENNA SUPPORT POLE

PROPOSED VF MULTI-BAND ANTENNA, FIXED TO EXISTING SPARE ANTENNA SUPPORT POLE, C/W 1NO. RRU'S

EXISTING VF ANTENNA ON A FACE MOUNTED SUPPORT POLE AND YOKE BRACKET C/W 1NO. ERICSSON RRU INSTALLED ON ANTENNA SUPPORT POLE

EXISTING '3' ANTENNAS MOUNTED ON POLE

EXISTING DISUSED ANTENNA SUPPORT POLE FIXED WALL

TOP OF PROPOSED ANTENNAS 29.3m AGL

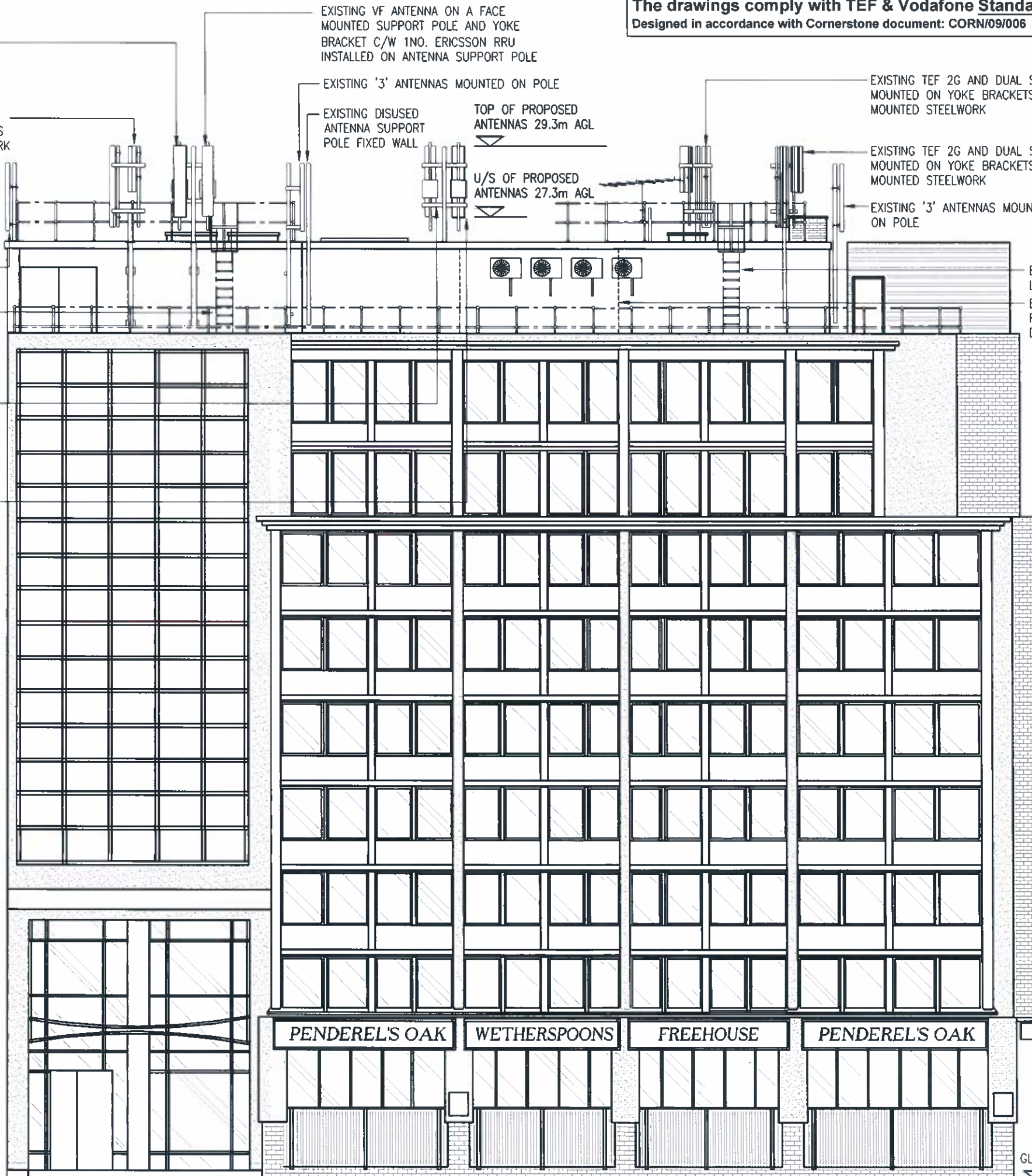
U/S OF PROPOSED ANTENNAS 27.3m AGL

EXISTING TEF 2G AND DUAL SECTOR 3G ANTENNAS MOUNTED ON YOKE BRACKETS FIXED TO ELEVATION MOUNTED STEELWORK

EXISTING TEF 2G AND DUAL SECTOR 3G ANTENNAS MOUNTED ON YOKE BRACKETS FIXED TO ELEVATION MOUNTED STEELWORK

EXISTING '3' ANTENNAS MOUNTED ON POLE

EXISTING HOOPED ACCESS LADDER  
EXISTING TEF EQUIPMENT ROOM AREA INDICATED BY DASHED LINES



PROPOSED NORTH ELEVATION  
(1:125)

B	Notes amended	BCL	SY	29.02.16
A	Issued for Approval	AJM	PM	01.02.16
REV	MODIFICATION	BY	CH	DATE

**mono** #  
 MONO CONSULTANTS LIMITED  
 No. 58 Cygnet Court  
 Timothy's Bridge Road  
 Stratford-upon-Avon  
 Warwickshire  
 CV37 9NW  
 t. 44 (0)1789 206500  
 f. 44 (0)1789 206529  
 www.monoconsultants.com



Cell Name	Opt
WHERSTONE PARK	SOR 7516

Cell ID No		
CTIL	Host	Sharer
13733922	(TEF) 004868	(VF) 80449

Site Address / Contact Details  
 NEW PENDERL HOUSE  
 283 HIGH HOLBORN  
 LONDON  
 GREATER LONDON  
 WC1R 5DJ

Drawing Title: PROPOSED SITE ELEVATION

Purpose of Issue: PLANNING

Drawing Number: 302

Scale:	As Shown	Drawn:	AJM	Date:	01.02.16	Issue:	B
Checked:	PM	Date:	01.02.16	Approved:	AKB	Date:	01.02.16