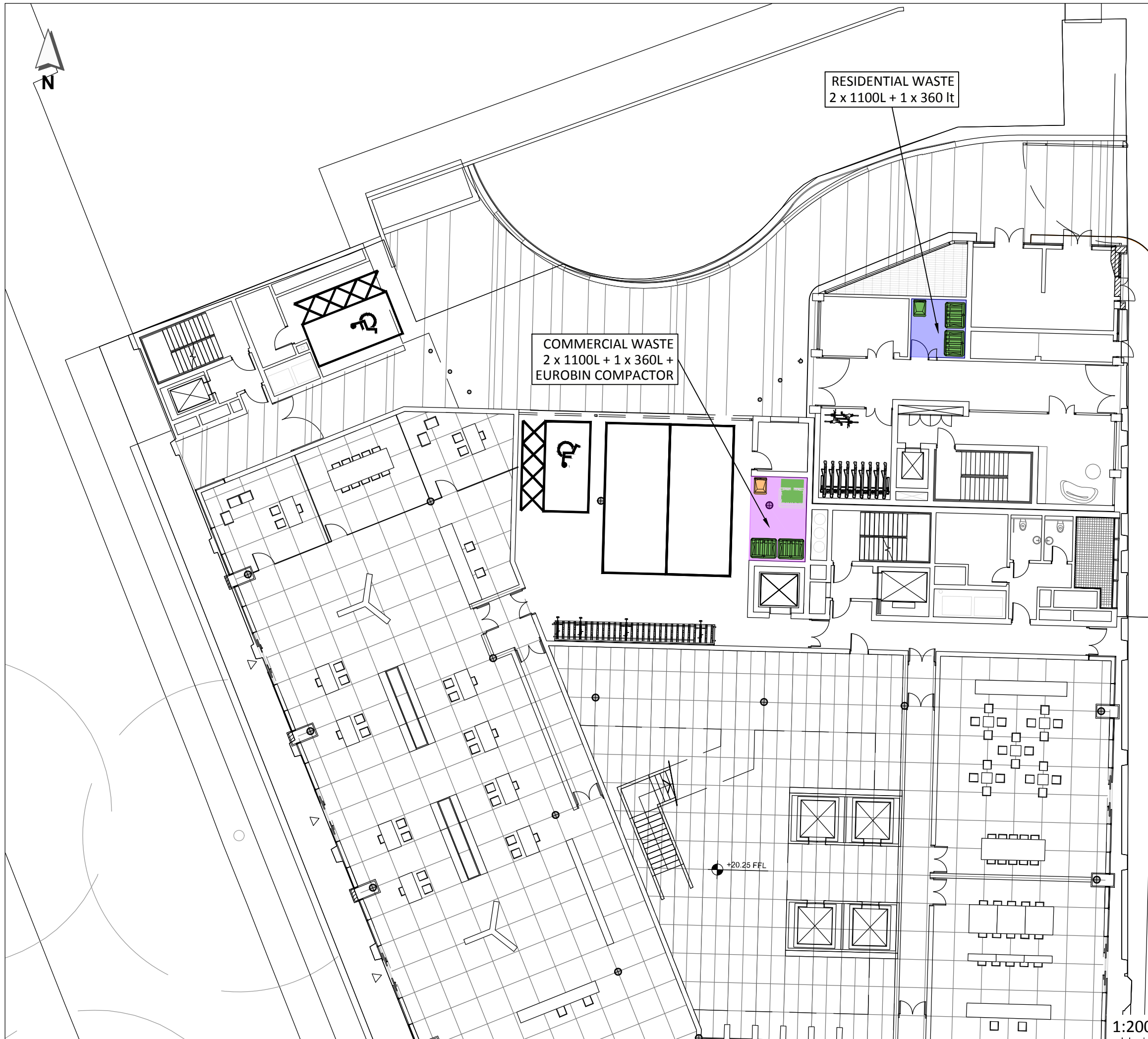


E Waste Management Facilities



NOTES:

1. THIS DRAWING IS BASED ON "325424 A-04-00.DWG" PROVIDED BY PBPW ON 160225.
2. ALL DIMENSIONS ARE IN METRES UNLESS OTHERWISE STATED.
3. DO NOT SCALE FROM THIS DRAWING.

KEY:

- COMMERCIAL WASTE STORAGE
- RESIDENTIAL WASTE STORAGE
- 360L WHEELED BIN
- 1100L EUROBIN
- EUROBIN COMPACTOR

A	04/03/16	REVISED FOR PLANNING ISSUE	MSB	JZC	DMZ
-	02/03/16	ORIGINAL ISSUE	MSB	JZC	DMZ
Rev.	Date	Comments	Des	Chk	App



t +44 (0)20 7910 5000 e sdginfo@sdgworld.net

Client :

DAH REAL ESTATE SARL

Title:

**150 HOLBORN
GROUND FLOOR
WASTE MANAGEMENT FACILITIES**

Drawing No. 22888501-GF-WAS-01	Sheet No. 01 OF 02	Rev. A
-----------------------------------	-----------------------	-----------

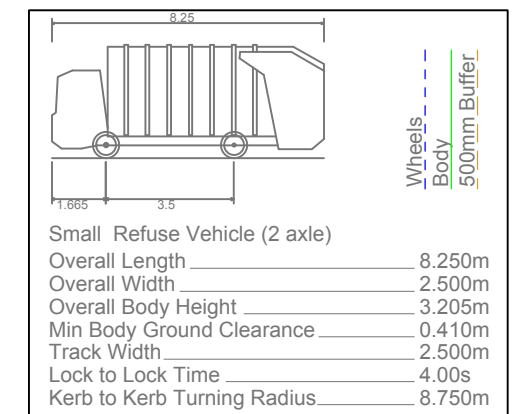
1:200 @ A3

F Swept Path Analysis (Large Refuse Vehicle)



NOTES:

1. THIS DRAWING IS BASED ON "325424 A-04-00.DWG" PROVIDED BY PBPW ON 160225.
2. ALL DIMENSIONS ARE IN METRES UNLESS OTHERWISE STATED.
3. DO NOT SCALE FROM THIS DRAWING.
4. CLEAR HEAD HEIGHT OF 4.5m REQUIRED FOR BIN UPLIFT



A	04/03/16	REVISED FOR PLANNING ISSUE	MSB	JZC	DMZ
-	02/03/16	ORIGINAL ISSUE	MSB	JZC	DMZ
Rev.	Date	Comments	Des	Chk	App



t +44 (0)20 7910 5000 e sdginfo@sdgworld.net

Client :
DAH REAL ESTATE SARL

Title:
**150 HOLBORN
GROUND FLOOR
WASTE MANAGEMENT FACILITIES**

Drawing No. 22888501-GF-WAS-01	Sheet No. 02 OF 02	Rev. A
-----------------------------------	-----------------------	-----------

1:200 @ A3

G Swept Path Analysis (7.5T Box Van)

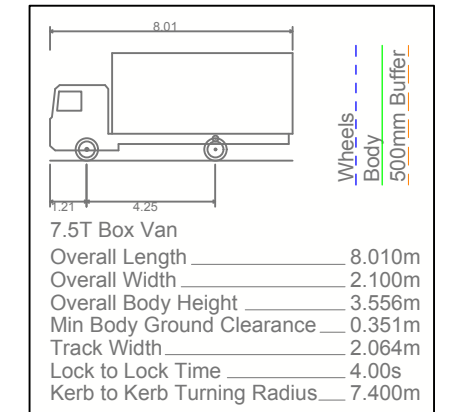


NOTES:

1. THIS DRAWING IS BASED ON "325424 A-04-00.DWG" PROVIDED BY PBPW ON 160225.
2. ALL DIMENSIONS ARE IN METRES UNLESS OTHERWISE STATED.
3. DO NOT SCALE FROM THIS DRAWING.

KEY:

- SERVICING AREA x 2 SPACES
- DISABLED PARKING BAY x 2 SPACES



Rev.	Date	Comments	MSB Des	JZC Chk	DMZ App
-	02/03/16	ORIGINAL ISSUE	MSB	JZC	DMZ



t +44 (0)20 7910 5000 e sdginfo@sdgworld.net

Client :

DAH REAL ESTATE SARL

Title:

**150 HOLBORN
 GROUND FLOOR
 SERVICING AREA AND CAR PARKING
 SWEEP PATH ANALYSIS**

Drawing No.	Sheet No.	Rev.
22888501-GF-SER-01	02 OF 04	-

1:200 @ A3

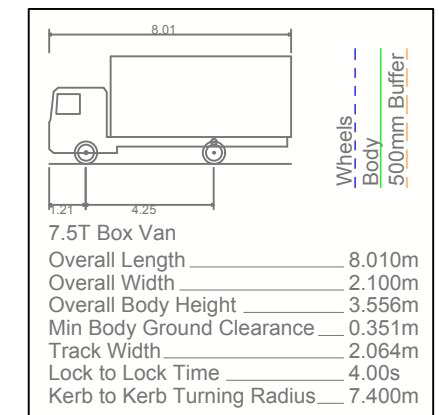


NOTES:

1. THIS DRAWING IS BASED ON "325424 A-04-00.DWG" PROVIDED BY PBPW ON 160225.
2. ALL DIMENSIONS ARE IN METRES UNLESS OTHERWISE STATED.
3. DO NOT SCALE FROM THIS DRAWING.

KEY:

- SERVICING AREA x 2 SPACES
- DISABLED PARKING BAY x 2 SPACES



-	02/03/16	ORIGINAL ISSUE	MSB	JZC	DMZ
Rev.	Date	Comments	Des	Chk	App



t +44 (0)20 7910 5000 e sdginfo@sdgworld.net

Client :

DAH REAL ESTATE SARL

Title:

**150 HOLBORN
 GROUND FLOOR
 SERVICING AREA AND CAR PARKING
 SWEEP PATH ANALYSIS**

Drawing No. 22888501-GF-SER-01	Sheet No. 03 OF 04	Rev. -
-----------------------------------	-----------------------	-----------

1:200 @ A3

H TRAVL Outputs – Office and Residential

Calculation Reference: AUDIT-720101-160304-0355

TRIP RATE CALCULATION SELECTION PARAMETERS:

Land Use : 02 - EMPLOYMENT
Category : A - OFFICE
MULTI-MODAL TOTAL PEOPLE

Selected regions and areas:

01	GREATER LONDON	
CI	CITY OF LONDON	1 days
CN	CAMDEN	1 days

This section displays the number of survey days per TRICS® sub-region in the selected set

Filtering Stage 2 selection:

This data displays the chosen trip rate parameter and its selected range. Only sites that fall within the parameter range are included in the trip rate calculation.

Parameter:	Gross floor area
Actual Range:	6056 to 9803 (units: sqm)
Range Selected by User:	5000 to 15000 (units: sqm)

Public Transport Provision:

Selection by: Include all surveys

Date Range: 01/01/07 to 19/05/15

This data displays the range of survey dates selected. Only surveys that were conducted within this date range are included in the trip rate calculation.

Selected survey days:

Wednesday	1 days
Friday	1 days

This data displays the number of selected surveys by day of the week.

Selected survey types:

Manual count	2 days
Directional ATC Count	0 days

This data displays the number of manual classified surveys and the number of unclassified ATC surveys, the total adding up to the overall number of surveys in the selected set. Manual surveys are undertaken using staff, whilst ATC surveys are undertaken using machines.

Selected Locations:

Town Centre	2
-------------	---

This data displays the number of surveys per main location category within the selected set. The main location categories consist of Free Standing, Edge of Town, Suburban Area, Neighbourhood Centre, Edge of Town Centre, Town Centre and Not Known.

Selected Location Sub Categories:

Commercial Zone	1
Built-Up Zone	1

This data displays the number of surveys per location sub-category within the selected set. The location sub-categories consist of Commercial Zone, Industrial Zone, Development Zone, Residential Zone, Retail Zone, Built-Up Zone, Village, Out of Town, High Street and No Sub Category.

Filtering Stage 3 selection:

Use Class:

B1 2 days

This data displays the number of surveys per Use Class classification within the selected set. The Use Classes Order 2005 has been used for this purpose, which can be found within the Library module of TRICS®.

Population within 1 mile:

50,001 to 100,000 2 days

This data displays the number of selected surveys within stated 1-mile radii of population.

Population within 5 miles:

500,001 or More 2 days

This data displays the number of selected surveys within stated 5-mile radii of population.

Car ownership within 5 miles:

0.5 or Less 1 days

0.6 to 1.0 1 days

This data displays the number of selected surveys within stated ranges of average cars owned per residential dwelling, within a radius of 5-miles of selected survey sites.

Travel Plan:

No 2 days

This data displays the number of surveys within the selected set that were undertaken at sites with Travel Plans in place, and the number of surveys that were undertaken at sites without Travel Plans.

LIST OF SITES relevant to selection parameters

- | | | |
|---|--|---|
| 1 | CI-02-A-02 OFFICES
GRACECHURCH STREET
MONUMENT
CITY OF LONDON
Town Centre
Commercial Zone
Total Gross floor area: 9803 sqm
Survey date: FRIDAY 29/11/13 | CITY OF LONDON

Survey Type: MANUAL |
| 2 | CN-02-A-02 OFFICES
GRAYS INN ROAD

CLERKENWELL
Town Centre
Built-Up Zone
Total Gross floor area: 6056 sqm
Survey date: WEDNESDAY 22/10/08 | CAMDEN

Survey Type: MANUAL |

This section provides a list of all survey sites and days in the selected set. For each individual survey site, it displays a unique site reference code and site address, the selected trip rate calculation parameter and its value, the day of the week and date of each survey, and whether the survey was a manual classified count or an ATC count.

MANUALLY DESELECTED SITES

Site Ref	Reason for Deselection
MS-02-A-01	Outside of London
WM-02-A-03	Outside of London

TRIP RATE for Land Use 02 - EMPLOYMENT/A - OFFICE
 MULTI-MODAL TOTAL PEOPLE
 Calculation factor: 100 sqm
 BOLD print indicates peak (busiest) period

Time Range	ARRIVALS			DEPARTURES			TOTALS		
	No. Days	Ave. GFA	Trip Rate	No. Days	Ave. GFA	Trip Rate	No. Days	Ave. GFA	Trip Rate
00:00 - 00:30									
00:30 - 01:00									
01:00 - 01:30									
01:30 - 02:00									
02:00 - 02:30									
02:30 - 03:00									
03:00 - 03:30									
03:30 - 04:00									
04:00 - 04:30									
04:30 - 05:00									
05:00 - 05:30									
05:30 - 06:00									
06:00 - 06:30									
06:30 - 07:00									
07:00 - 07:30	2	7930	0.082	2	7930	0.038	2	7930	0.120
07:30 - 08:00	2	7930	0.328	2	7930	0.044	2	7930	0.372
08:00 - 08:30	2	7930	0.788	2	7930	0.069	2	7930	0.857
08:30 - 09:00	2	7930	1.274	2	7930	0.032	2	7930	1.306
09:00 - 09:30	2	7930	0.971	2	7930	0.082	2	7930	1.053
09:30 - 10:00	2	7930	0.435	2	7930	0.139	2	7930	0.574
10:00 - 10:30	2	7930	0.404	2	7930	0.252	2	7930	0.656
10:30 - 11:00	2	7930	0.259	2	7930	0.221	2	7930	0.480
11:00 - 11:30	2	7930	0.296	2	7930	0.385	2	7930	0.681
11:30 - 12:00	2	7930	0.202	2	7930	0.460	2	7930	0.662
12:00 - 12:30	2	7930	0.309	2	7930	0.441	2	7930	0.750
12:30 - 13:00	2	7930	0.580	2	7930	1.034	2	7930	1.614
13:00 - 13:30	2	7930	0.940	2	7930	0.883	2	7930	1.823
13:30 - 14:00	2	7930	0.441	2	7930	0.372	2	7930	0.813
14:00 - 14:30	2	7930	0.233	2	7930	0.240	2	7930	0.473
14:30 - 15:00	2	7930	0.807	2	7930	0.259	2	7930	1.066
15:00 - 15:30	2	7930	0.454	2	7930	0.296	2	7930	0.750
15:30 - 16:00	2	7930	0.290	2	7930	0.334	2	7930	0.624
16:00 - 16:30	2	7930	0.240	2	7930	0.422	2	7930	0.662
16:30 - 17:00	2	7930	0.151	2	7930	0.486	2	7930	0.637
17:00 - 17:30	2	7930	0.145	2	7930	1.078	2	7930	1.223
17:30 - 18:00	2	7930	0.050	2	7930	0.839	2	7930	0.889
18:00 - 18:30	2	7930	0.063	2	7930	0.486	2	7930	0.549
18:30 - 19:00	2	7930	0.032	2	7930	0.328	2	7930	0.360
19:00 - 19:30									
19:30 - 20:00									
20:00 - 20:30									
20:30 - 21:00									
21:00 - 21:30									
21:30 - 22:00									
22:00 - 22:30									
22:30 - 23:00									
23:00 - 23:30									
23:30 - 24:00									
Total Rates:			9.774			9.220			18.994

This section displays the trip rate results based on the selected set of surveys and the selected count type (shown just above the table). It is split by three main columns, representing arrivals trips, departures trips, and total trips (arrivals plus departures). Within each of these main columns are three sub-columns. These display the number of survey days where count data is included (per time period), the average value of the selected trip rate calculation parameter (per time period), and the trip rate result (per time period). Total trip rates (the sum of the column) are also displayed at the foot of the table.

To obtain a trip rate, the average (mean) trip rate parameter value (TRP) is first calculated for all selected survey days that have count data available for the stated time period. The average (mean) number of arrivals, departures or totals (whichever applies) is also calculated (COUNT) for all selected survey days that have count data available for the stated time period. Then, the average count is divided by the average trip rate parameter value, and multiplied by the stated calculation factor (shown just above the table and abbreviated here as FACT). So, the method is: COUNT/TRP*FACT. Trip rates are then rounded to 3 decimal places.

Parameter summary

Trip rate parameter range selected:	6056 - 9803 (units: sqm)
Survey date date range:	01/01/07 - 19/05/15
Number of weekdays (Monday-Friday):	2
Number of Saturdays:	0
Number of Sundays:	0
Surveys manually removed from selection:	5

This section displays a quick summary of some of the data filtering selections made by the TRICS® user. The trip rate calculation parameter range of all selected surveys is displayed first, followed by the range of minimum and maximum survey dates selected by the user. Then, the total number of selected weekdays and weekend days in the selected set of surveys are show. Finally, the number of survey days that have been manually removed from the selected set outside of the standard filtering procedure are displayed.

Calculation Reference: AUDIT-720101-160304-0331

TRIP RATE CALCULATION SELECTION PARAMETERS:

Land Use : 03 - RESIDENTIAL
Category : C - FLATS PRIVATELY OWNED
MULTI-MODAL VEHICLE OCCUPANTS

Selected regions and areas:

01	GREATER LONDON	
HK	HACKNEY	1 days
HM	HAMMERSMITH AND FULHAM	1 days

This section displays the number of survey days per TRICS® sub-region in the selected set

Filtering Stage 2 selection:

This data displays the chosen trip rate parameter and its selected range. Only sites that fall within the parameter range are included in the trip rate calculation.

Parameter:	Number of dwellings
Actual Range:	9 to 42 (units:)
Range Selected by User:	9 to 50 (units:)

Public Transport Provision:

Selection by: Include all surveys

Date Range: 01/01/07 to 23/04/15

This data displays the range of survey dates selected. Only surveys that were conducted within this date range are included in the trip rate calculation.

Selected survey days:

Tuesday	1 days
Wednesday	1 days

This data displays the number of selected surveys by day of the week.

Selected survey types:

Manual count	2 days
Directional ATC Count	0 days

This data displays the number of manual classified surveys and the number of unclassified ATC surveys, the total adding up to the overall number of surveys in the selected set. Manual surveys are undertaken using staff, whilst ATC surveys are undertaken using machines.

Selected Locations:

Town Centre	2
-------------	---

This data displays the number of surveys per main location category within the selected set. The main location categories consist of Free Standing, Edge of Town, Suburban Area, Neighbourhood Centre, Edge of Town Centre, Town Centre and Not Known.

Selected Location Sub Categories:

Built-Up Zone	1
High Street	1

This data displays the number of surveys per location sub-category within the selected set. The location sub-categories consist of Commercial Zone, Industrial Zone, Development Zone, Residential Zone, Retail Zone, Built-Up Zone, Village, Out of Town, High Street and No Sub Category.

Filtering Stage 3 selection:

Use Class:

C3 2 days

This data displays the number of surveys per Use Class classification within the selected set. The Use Classes Order 2005 has been used for this purpose, which can be found within the Library module of TRICS®.

Population within 1 mile:

50,001 to 100,000 1 days

101,000 or More 1 days

This data displays the number of selected surveys within stated 1-mile radii of population.

Population within 5 miles:

500,001 or More 2 days

This data displays the number of selected surveys within stated 5-mile radii of population.

Car ownership within 5 miles:

0.5 or Less 1 days

0.6 to 1.0 1 days

This data displays the number of selected surveys within stated ranges of average cars owned per residential dwelling, within a radius of 5-miles of selected survey sites.

Travel Plan:

No 2 days

This data displays the number of surveys within the selected set that were undertaken at sites with Travel Plans in place, and the number of surveys that were undertaken at sites without Travel Plans.

LIST OF SITES relevant to selection parameters

1	HK-03-C-02	BLOCK OF FLATS		HACKNEY
	HOXTON			
	SHOREDITCH			
	Town Centre			
	Built-Up Zone			
	Total Number of dwellings:		9	
	Survey date: TUESDAY		11/11/08	Survey Type: MANUAL
2	HM-03-C-01	BLOCK OF FLATS		HAMMERSMITH AND FULHAM
	VANSTON PLACE			
	FULHAM			
	Town Centre			
	High Street			
	Total Number of dwellings:		42	
	Survey date: WEDNESDAY		16/07/14	Survey Type: MANUAL

This section provides a list of all survey sites and days in the selected set. For each individual survey site, it displays a unique site reference code and site address, the selected trip rate calculation parameter and its value, the day of the week and date of each survey, and whether the survey was a manual classified count or an ATC count.

TRIP RATE for Land Use 03 - RESIDENTIAL/C - FLATS PRIVATELY OWNED
 MULTI-MODAL VEHICLE OCCUPANTS
 Calculation factor: 1 DWELLS
 BOLD print indicates peak (busiest) period

Time Range	ARRIVALS			DEPARTURES			TOTALS		
	No. Days	Ave. DWELLS	Trip Rate	No. Days	Ave. DWELLS	Trip Rate	No. Days	Ave. DWELLS	Trip Rate
00:00 - 01:00									
01:00 - 02:00									
02:00 - 03:00									
03:00 - 04:00									
04:00 - 05:00									
05:00 - 06:00									
06:00 - 07:00									
07:00 - 08:00	2	26	0.000	2	26	0.000	2	26	0.000
08:00 - 09:00	2	26	0.020	2	26	0.000	2	26	0.020
09:00 - 10:00	2	26	0.020	2	26	0.039	2	26	0.059
10:00 - 11:00	2	26	0.020	2	26	0.059	2	26	0.079
11:00 - 12:00	2	26	0.000	2	26	0.020	2	26	0.020
12:00 - 13:00	2	26	0.098	2	26	0.098	2	26	0.196
13:00 - 14:00	2	26	0.000	2	26	0.000	2	26	0.000
14:00 - 15:00	2	26	0.039	2	26	0.039	2	26	0.078
15:00 - 16:00	2	26	0.000	2	26	0.000	2	26	0.000
16:00 - 17:00	2	26	0.020	2	26	0.020	2	26	0.040
17:00 - 18:00	2	26	0.020	2	26	0.020	2	26	0.040
18:00 - 19:00	2	26	0.000	2	26	0.000	2	26	0.000
19:00 - 20:00									
20:00 - 21:00									
21:00 - 22:00									
22:00 - 23:00									
23:00 - 24:00									
Total Rates:			0.237			0.295			0.532

This section displays the trip rate results based on the selected set of surveys and the selected count type (shown just above the table). It is split by three main columns, representing arrivals trips, departures trips, and total trips (arrivals plus departures). Within each of these main columns are three sub-columns. These display the number of survey days where count data is included (per time period), the average value of the selected trip rate calculation parameter (per time period), and the trip rate result (per time period). Total trip rates (the sum of the column) are also displayed at the foot of the table.

To obtain a trip rate, the average (mean) trip rate parameter value (TRP) is first calculated for all selected survey days that have count data available for the stated time period. The average (mean) number of arrivals, departures or totals (whichever applies) is also calculated (COUNT) for all selected survey days that have count data available for the stated time period. Then, the average count is divided by the average trip rate parameter value, and multiplied by the stated calculation factor (shown just above the table and abbreviated here as FACT). So, the method is: COUNT/TRP*FACT. Trip rates are then rounded to 3 decimal places.

Parameter summary

Trip rate parameter range selected: 9 - 42 (units:)
 Survey date date range: 01/01/07 - 23/04/15
 Number of weekdays (Monday-Friday): 2
 Number of Saturdays: 0
 Number of Sundays: 0
 Surveys manually removed from selection: 0

This section displays a quick summary of some of the data filtering selections made by the TRICS® user. The trip rate calculation parameter range of all selected surveys is displayed first, followed by the range of minimum and maximum survey dates selected by the user. Then, the total number of selected weekdays and weekend days in the selected set of surveys are show. Finally, the number of survey days that have been manually removed from the selected set outside of the standard filtering procedure are displayed.

TRIP RATE for Land Use 03 - RESIDENTIAL/C - FLATS PRIVATELY OWNED
 MULTI-MODAL TOTAL PEOPLE
 Calculation factor: 1 DWELLS
 BOLD print indicates peak (busiest) period

Time Range	ARRIVALS			DEPARTURES			TOTALS		
	No. Days	Ave. DWELLS	Trip Rate	No. Days	Ave. DWELLS	Trip Rate	No. Days	Ave. DWELLS	Trip Rate
00:00 - 01:00									
01:00 - 02:00									
02:00 - 03:00									
03:00 - 04:00									
04:00 - 05:00									
05:00 - 06:00									
06:00 - 07:00									
07:00 - 08:00	2	26	0.098	2	26	0.353	2	26	0.451
08:00 - 09:00	2	26	0.078	2	26	0.275	2	26	0.353
09:00 - 10:00	2	26	0.039	2	26	0.216	2	26	0.255
10:00 - 11:00	2	26	0.078	2	26	0.235	2	26	0.313
11:00 - 12:00	2	26	0.078	2	26	0.098	2	26	0.176
12:00 - 13:00	2	26	0.157	2	26	0.118	2	26	0.275
13:00 - 14:00	2	26	0.118	2	26	0.137	2	26	0.255
14:00 - 15:00	2	26	0.059	2	26	0.118	2	26	0.177
15:00 - 16:00	2	26	0.157	2	26	0.078	2	26	0.235
16:00 - 17:00	2	26	0.157	2	26	0.118	2	26	0.275
17:00 - 18:00	2	26	0.176	2	26	0.137	2	26	0.313
18:00 - 19:00	2	26	0.118	2	26	0.078	2	26	0.196
19:00 - 20:00									
20:00 - 21:00									
21:00 - 22:00									
22:00 - 23:00									
23:00 - 24:00									
Total Rates:			1.313			1.961			3.274

This section displays the trip rate results based on the selected set of surveys and the selected count type (shown just above the table). It is split by three main columns, representing arrivals trips, departures trips, and total trips (arrivals plus departures). Within each of these main columns are three sub-columns. These display the number of survey days where count data is included (per time period), the average value of the selected trip rate calculation parameter (per time period), and the trip rate result (per time period). Total trip rates (the sum of the column) are also displayed at the foot of the table.

To obtain a trip rate, the average (mean) trip rate parameter value (TRP) is first calculated for all selected survey days that have count data available for the stated time period. The average (mean) number of arrivals, departures or totals (whichever applies) is also calculated (COUNT) for all selected survey days that have count data available for the stated time period. Then, the average count is divided by the average trip rate parameter value, and multiplied by the stated calculation factor (shown just above the table and abbreviated here as FACT). So, the method is: COUNT/TRP*FACT. Trip rates are then rounded to 3 decimal places.

Parameter summary

Trip rate parameter range selected: 9 - 42 (units:)
 Survey date date range: 01/01/07 - 23/04/15
 Number of weekdays (Monday-Friday): 2
 Number of Saturdays: 0
 Number of Sundays: 0
 Surveys manually removed from selection: 0

This section displays a quick summary of some of the data filtering selections made by the TRICS® user. The trip rate calculation parameter range of all selected surveys is displayed first, followed by the range of minimum and maximum survey dates selected by the user. Then, the total number of selected weekdays and weekend days in the selected set of surveys are show. Finally, the number of survey days that have been manually removed from the selected set outside of the standard filtering procedure are displayed.