

THE ICE WHARF, CAMDEN
PROPOSED CANALSIDE TERRACE EXTENSION

T. 02073 067010
A. 02073 067011
www.kdpaine.co.uk

kdpa

kdesign
kdp project management
kdp architecture



The Site...
The Ice Wharf, Camden Lock



Site context... Camden Lock



Towards Kings Cross



Towards Camden Town Station



Towards Camden Market/
The Stables



JD Wetherspoon, The Ice Wharf

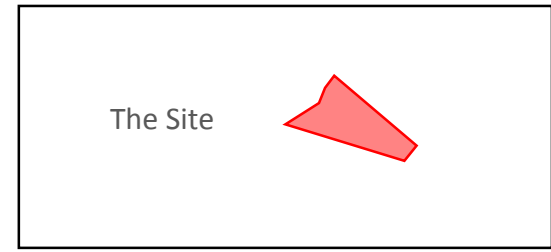
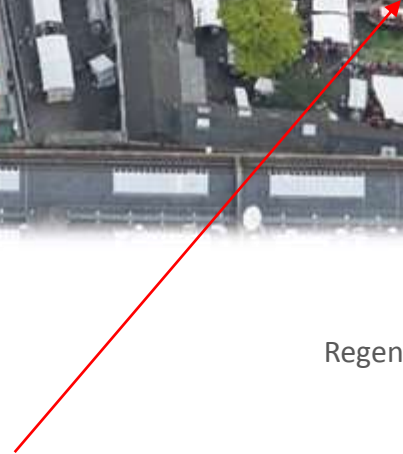


Regents Canal

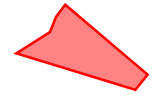


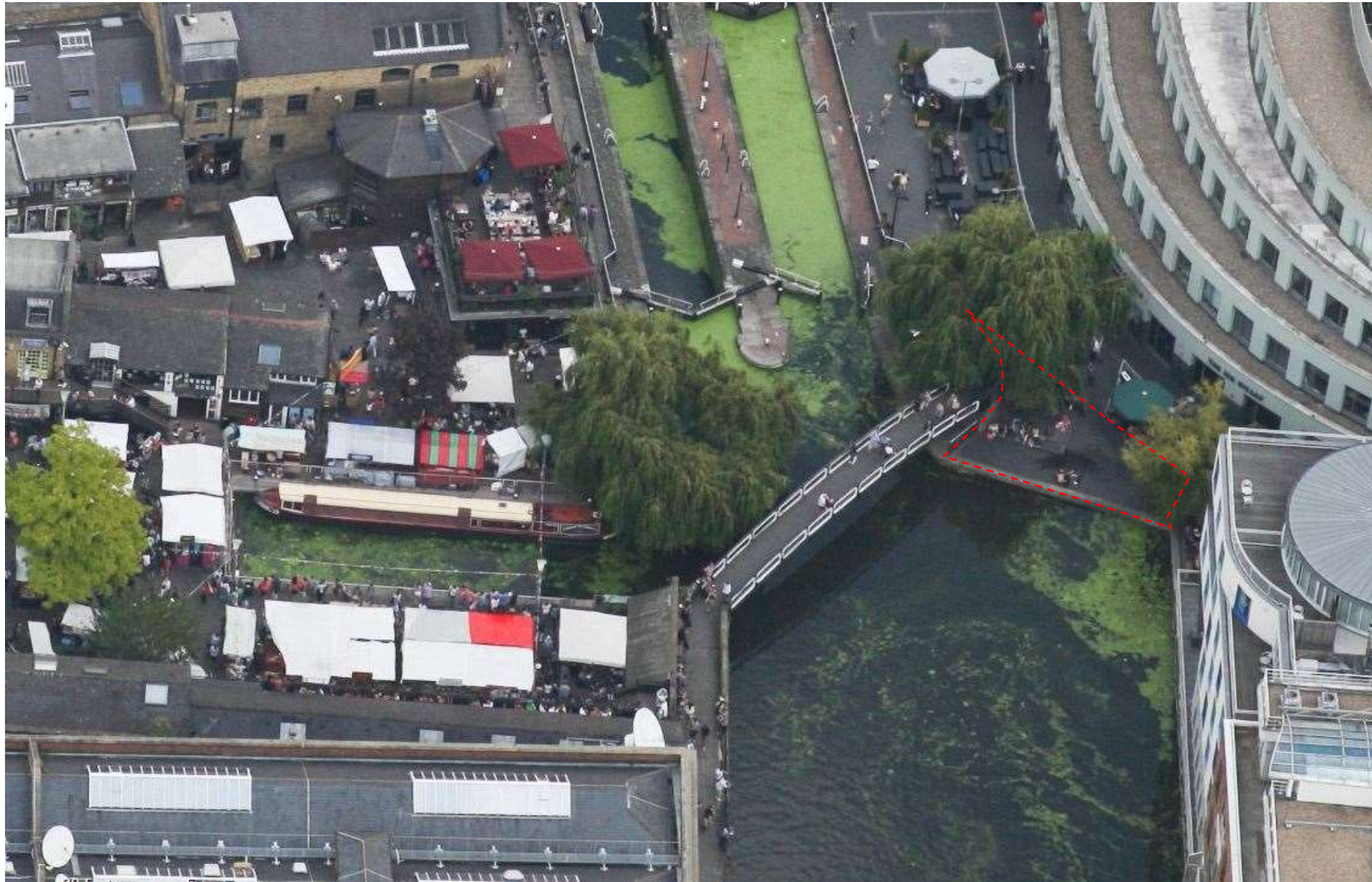
Towards Regents Park

Camden Lock Market



The Site

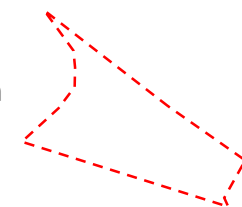




The Site....

The Ice Wharf, Camden Lock

Area of terrace expansion

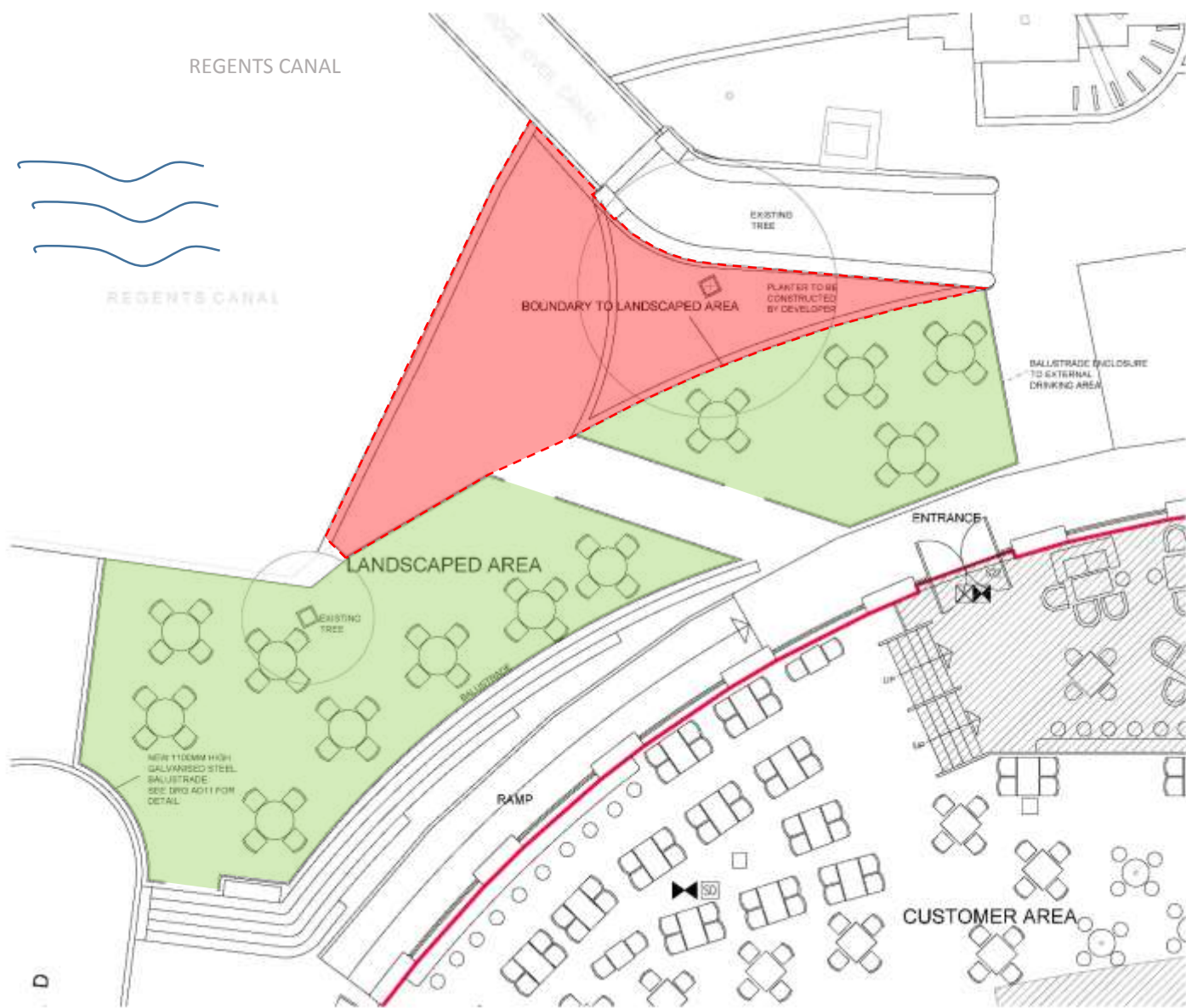


THE ICE WHARF, CAMDEN
PROPOSED CANALSIDE TERRACE EXTENSION

T. 02073 067018
A. 02073 067018
www.kdpaine.co.uk

kdpa

kdesign
kdp project management
kdp architecture



The Site from the bridge



View South, across the canal towards the Site



View North-East towards the raised area and landscaped area beneath the willow tree



Existing landscaped area



Site view from the bridge; the concrete kerb forms the junction between the ground and the canal

Contextual Landscape material...



Whilst much of the hard landscaping has been repaired/replaced over time, the granite sets leading to the bridge have been retained. The quality of these gives much to the character of the area.

More recent development includes the stepped topography of the wharf terrace and the general paving to this area. These sit alongside curiosities such as a willow tree with its extended planter to its base



Site surroundings....

The Ice Wharf, Camden Lock



The Ice Wharf, existing terrace area



Camden Lock



View along canal (South-West) towards Regents Park

Camden Lock footbridge...
North-Easterly boundary



The listed cast iron bridge structure forms a key focal point and boundary to the site





Existing edge conditions and thresholds...
Railings in the immediate vicinity range from ornate to contemporary, with finishes including painted/coated to stainless steel.



Precedent study....Edge conditions
 Regents Canal & Kings Cross regeneration area



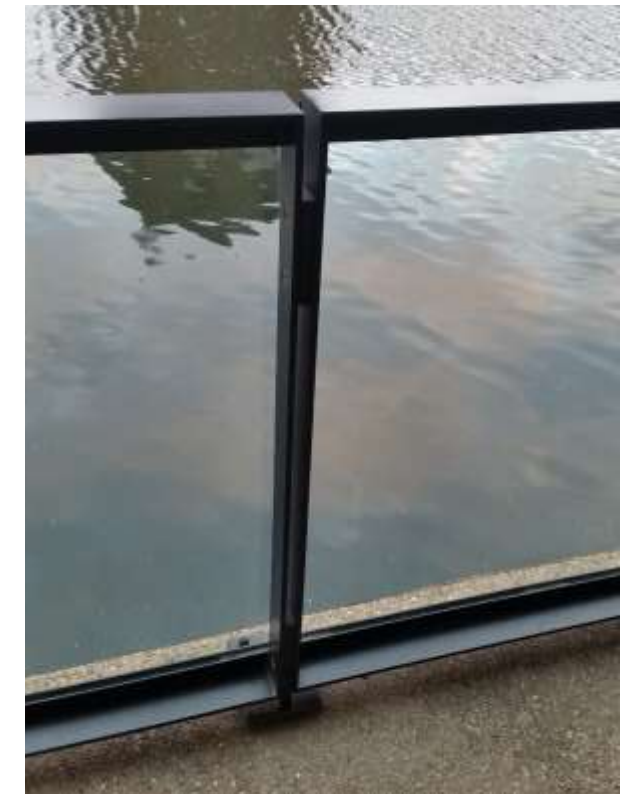
Timber planter with integrated seating forms a threshold between the terrace and the canal at this Kings Cross bar/restaurant



For much of the tow path the waters edge is highlighted only by a continual concrete kerb. Tethering posts of varying forms further accentuate the waters edge.



Varying styles of barrier, balustrade and railing are evident along the canal including historic cast iron railing (*Left*), the more utilitarian galvanised railing (*below*) and the contemporary styled steel and glass (*right*)



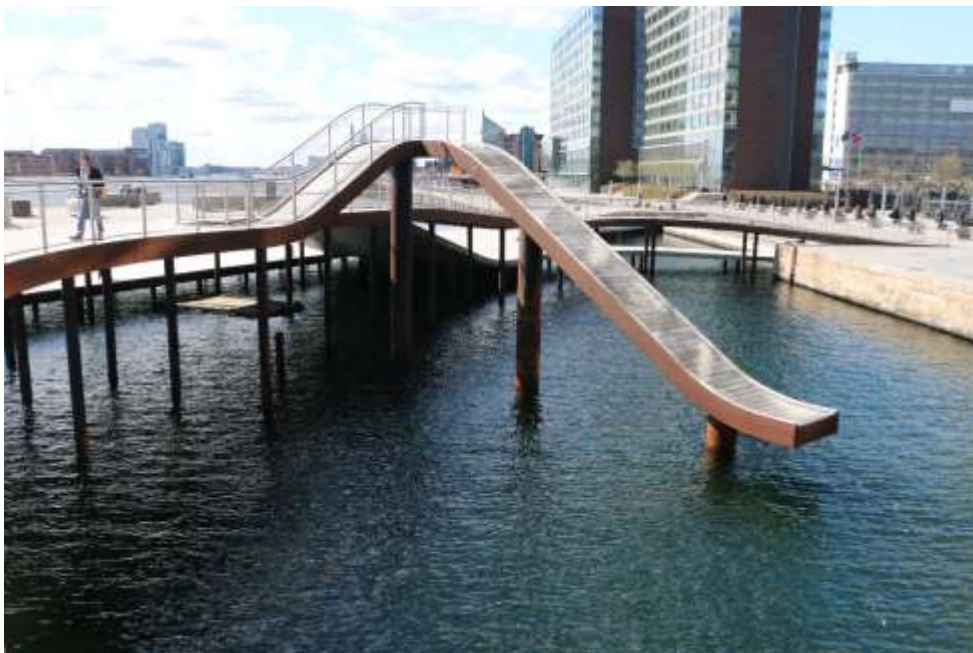
Following the canal North-East, treatment varies to incorporate more public 'holding' space such as the linking the canal to Granary Square and the surrounding café's restaurants and Arts School. Here the focus shifts towards the canal and an amphitheatre type arrangement, utilising the canal as the temporary events space.



This urban landscape act in much the same way as the traditional public square, where the square would form a natural focal point with its flanking edges providing the a comfortable spot for the 'spectators'.



The clean sharp lines of the new boardwalk contrast against the soft contours and the natural timber plank deck. As in Kings Cross, the step heights promote sitting rather than walking



The unexpected form of a slide provokes a playful character to the area

Waterside Landscaping & edge conditions.....

These precedent images have informed the proposal on a design level, whilst also providing an understanding of habits and comfort levels of people when interacting with water front scenario's.

The interplay between material, form and time, create vibrant yet respectful solutions.



Stone provides a strong historical identity, here providing a grounding contrast to the contemporary gable in the background.



THE ICE WHARF, CAMDEN
PROPOSED CANALSIDE TERRACE EXTENSION

T: 02073 057018
E: info@kdpaine.co.uk
www.kdpaine.co.uk

kdpa

kdesign
kdp project management
kdp architecture



How we occupy space around powerful focal points such as waterfront areas can vary, however an informal arrangement is an often popular choice



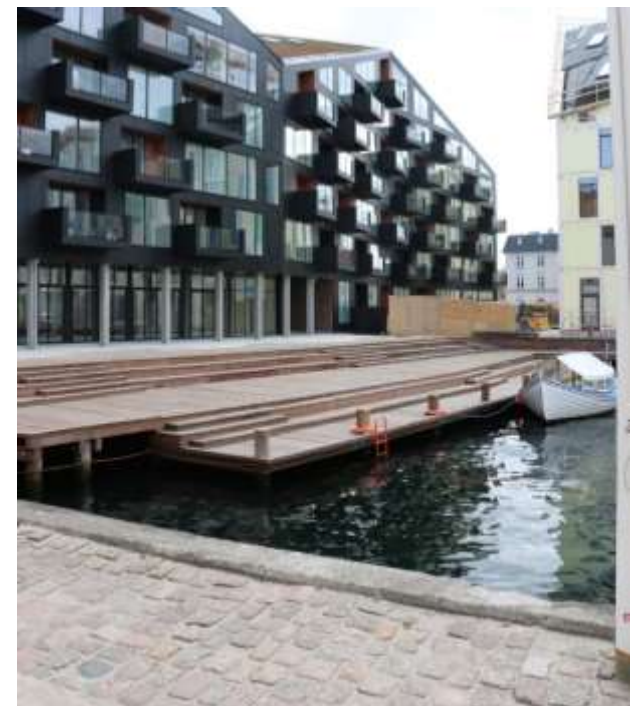
Retaining historical elements such as these railway lines, embeds another layer of history into the landscape, leaving a memory of the past,



Natural materials used in collaboration with contemporary interventions creates a harmony firmly set in the past but with an exciting subtle twist. The uneven nature of the cobblestones sit against the steel edging and resin stone to form the tree surround.

Landscaping study...

Examples of landscaping have been extracted from our study, with the results informing the proposed design selection process.



Repairs to the landscape form scars of time which seem to enhance the overall character.



The threshold between land and water is softened with a stepped timber deck. The nature of the timber marries seamlessly with the historic stone and the contemporary development in the background.



Sculpture can be a successful introduction of contemporary materials and form into areas of natural and historic importance.

Public Art; Precedent study...

-Public art and sculpture provides a powerful expression of identity, engaging people on a physical, tactile level.



The Proposal...

-The proposed layout incorporates both the existing terrace area and the new extended terrace, utilising existing site conditions to form separate areas within the overall plan, each with their own identity;

-The Main drinking/dining terrace

-The informal drinking/dining area

-The Sculpture garden

-The Lawn



In both arrangement and material palette, the proposal intends to conserve and enhance the existing character of the canal side site

Area as existing



The Drinking & Dining Terrace...

The area forming the main drinking and dining area, includes a large portion of the extended terrace area flanking the canal side.



Stools



Informal bench seating



Feature table wrapping willow tree utilising reclaimed materials

The Informal drinking & dining area...

-Seating along the existing wall is to be encouraged, combining high and low tables in this area to create an Informal arrangement and atmosphere



Area as existing

Area as existing



The Sculpture garden...

Proposed sculpture celebrating the history of the Ice Wharf and the Norwegian Ice trade. This intervention is intended to continue the humour and surprise element that is a famed quality of Camden.



Ice cutting in Norway...Reference image for proposed sculpture; incorporating full scale human with ice blocks (Material to be agreed). Ice blocks to act as informal drinks shelves/tables

Area as existing

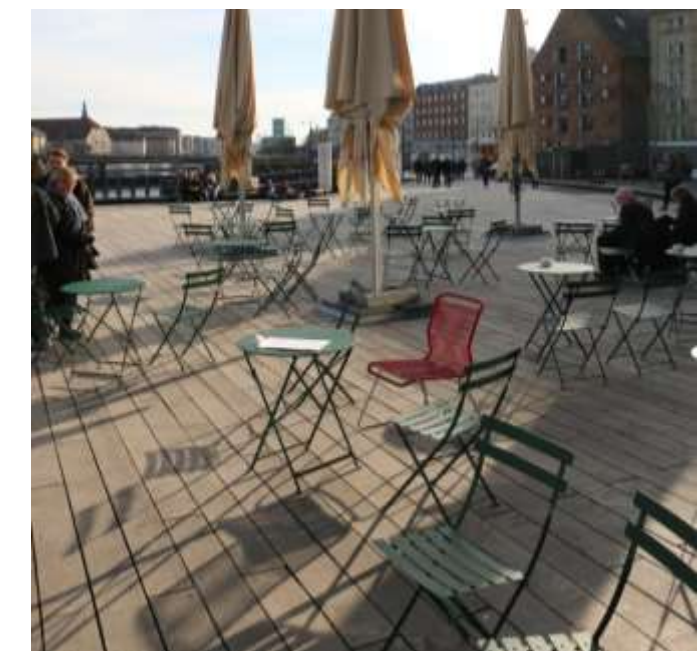


The Lawn...

located under the willow tree a small relaxed area would occupy the high ground, where an informal arrangement of furniture looks out over the Regents Canal



Proposed artificial grass under willow tree



Informal garden type seating





The balustrade...

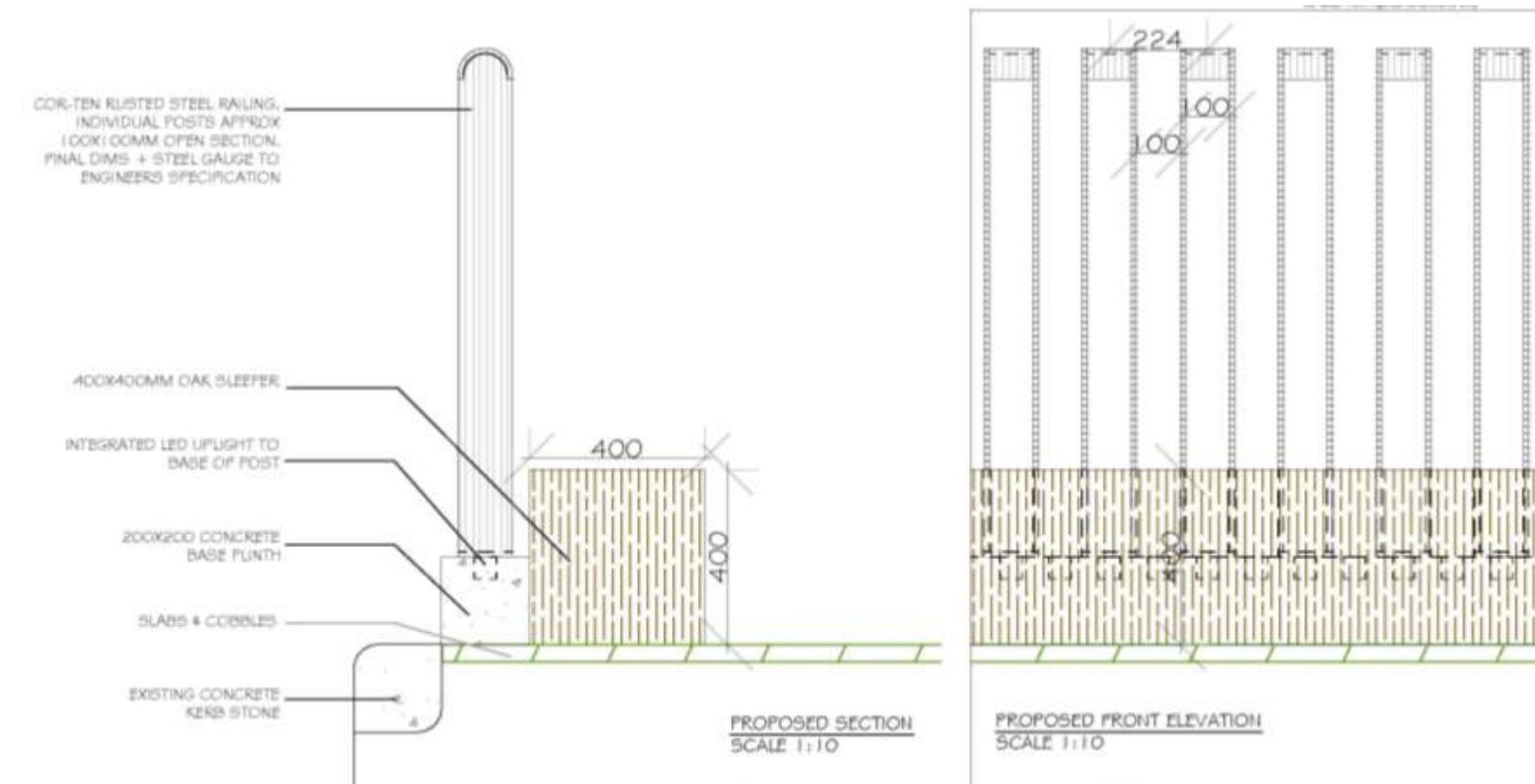
A new balustrade is proposed forming a threshold between the canal and the new drinking and dining areas.

Key Features...

- The balustrade design is intended to sit as a modest intervention within the existing surroundings. The aim is to both compliment and enhance the industrial character of the Camden Lock area.
- Manufactured from rusted (Corten) steel, with a brick/concrete plinth base and an integrated timber bench/planter, the weathered components are intended to have the appearance of having been in existence for some time.
- The natural material palette is crafted to form an overall contemporary design, with the firm intention to avoid a pastiche of the existing historic surroundings.
- By night, Integrated lighting within the railing allows it to take on a new lease of life, reflecting the inherent character of Camden.

The balustrade...

-A new balustrade is proposed forming a threshold between the canal and the new drinking and dining areas.

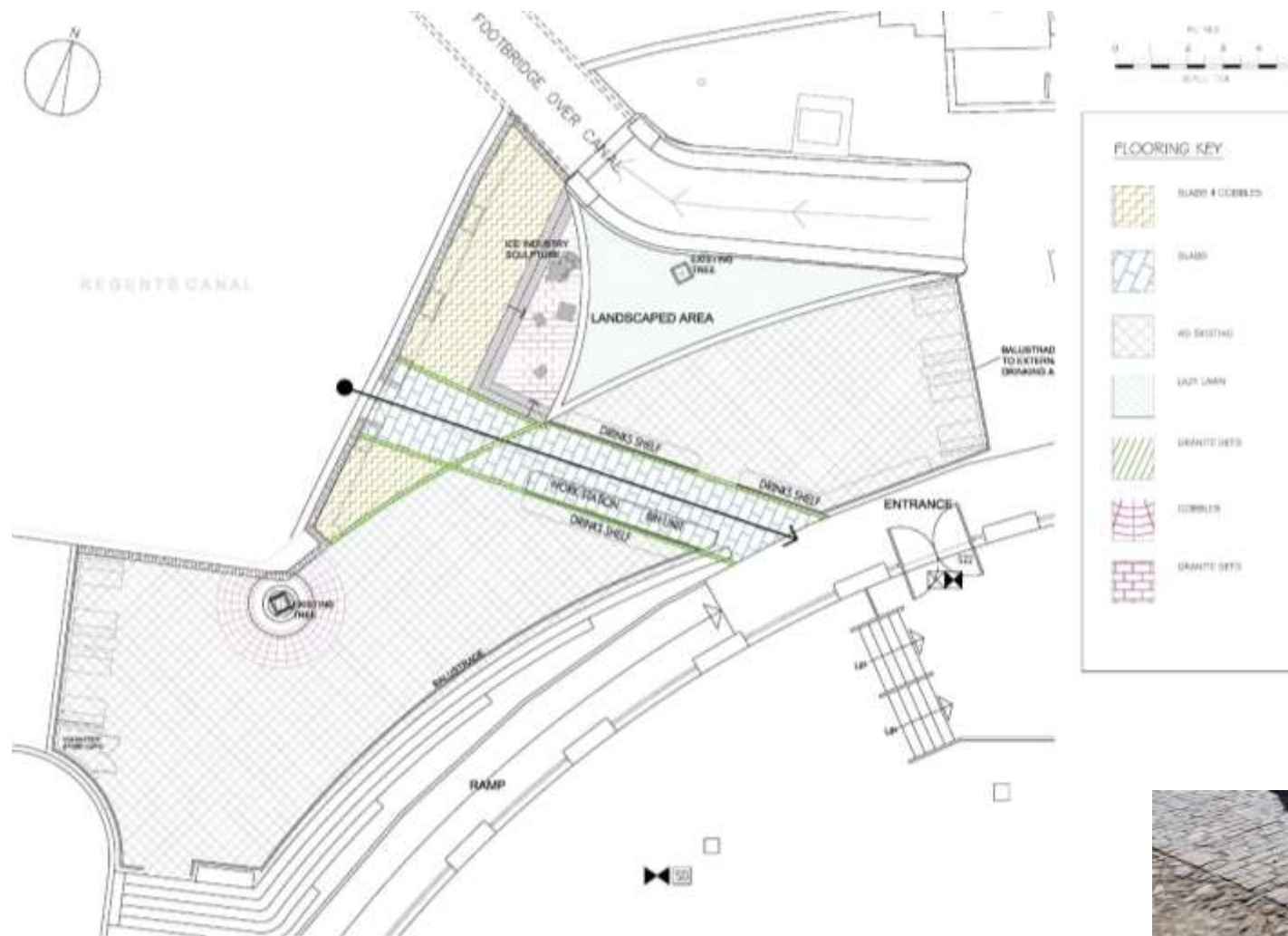


The use of a timber sleeper type plinth arrangement to the proposed threshold, offers the opportunity to reduce litter falling into the canal, whilst also serving as a tactile reminder of the site and its history

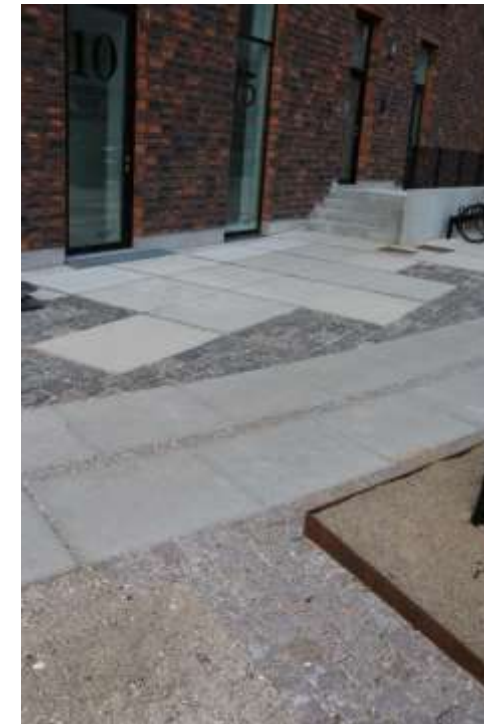


Landscaping proposal ...

-proposed landscaping builds on the earlier study, embedding a contemporary layer into the history, whilst capturing and enhancing the urban grain of Camden.

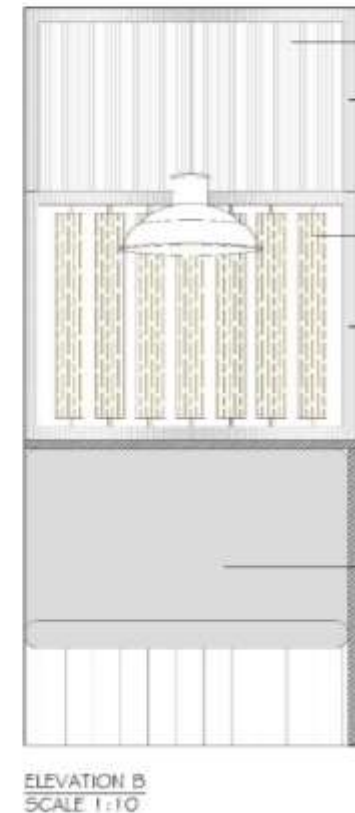
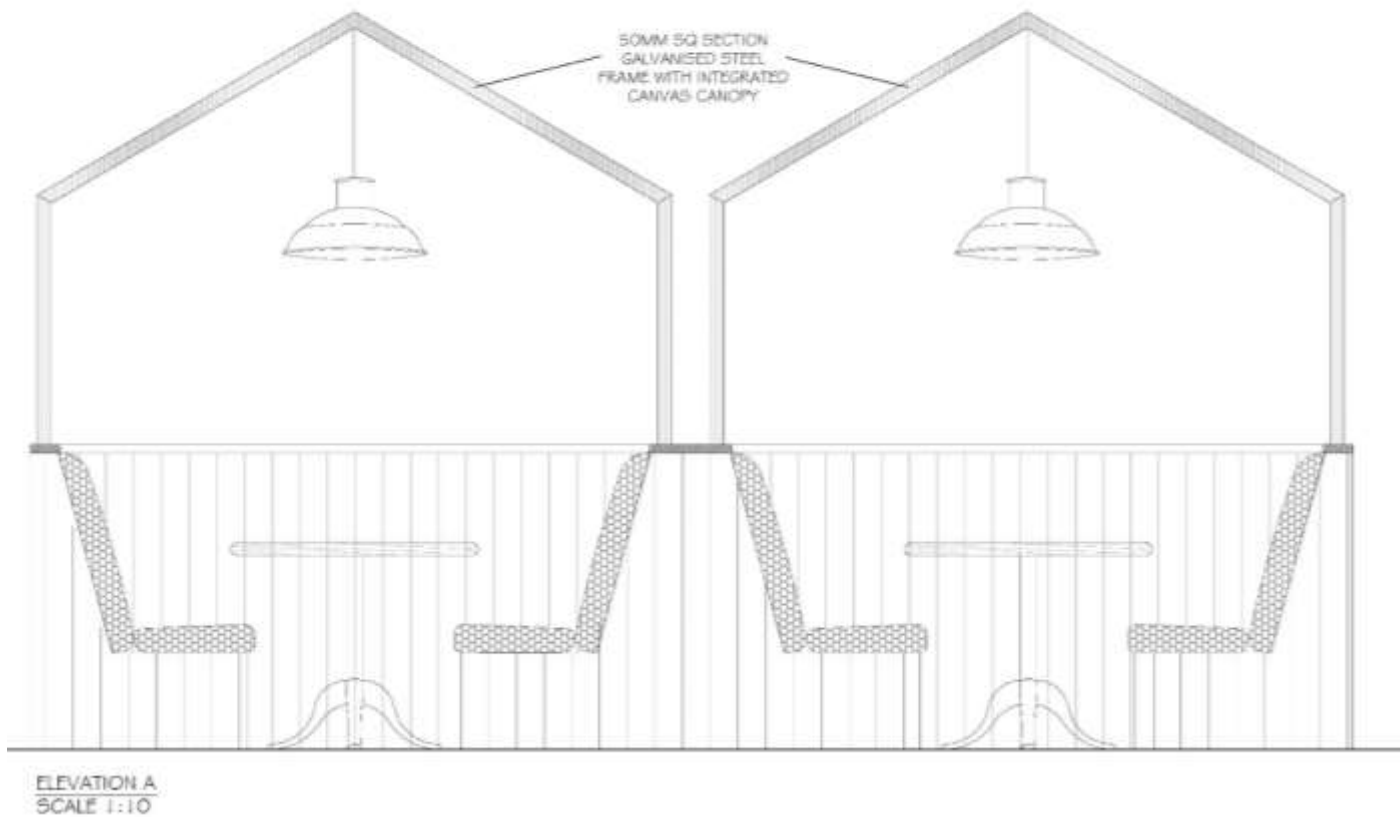


Hard landscaping to include areas of new flooring, incorporating Granite sets, stone paving slabs and clay brick pavers. Combined with original historic fabric. The intention is to produce a high quality intervention.



Fixed booth seating...

-proposed landscaping builds on the study findings, capturing the grain of Camden.



Proposed dividing screens in the seating booths take their form from timber shutters and folding doors common in industrial buildings.

Fixed seating design is inspired by the market stools of Camden. Proposed canopies over the fixed seating aim to enhance the 'street scene' whilst creating intimacy for al-fresco drinking and dining. The temporary nature of the design extends the 'vibrant second nature' of Camden



THE ICE WHARF, CAMDEN
PROPOSED CANALSIDE TERRACE EXTENSION

T: 02073 057018
E: info@kdpaine.co.uk
www.kdpaine.co.uk

kdp
a

kdesign
kdp project management
kdp architecture

