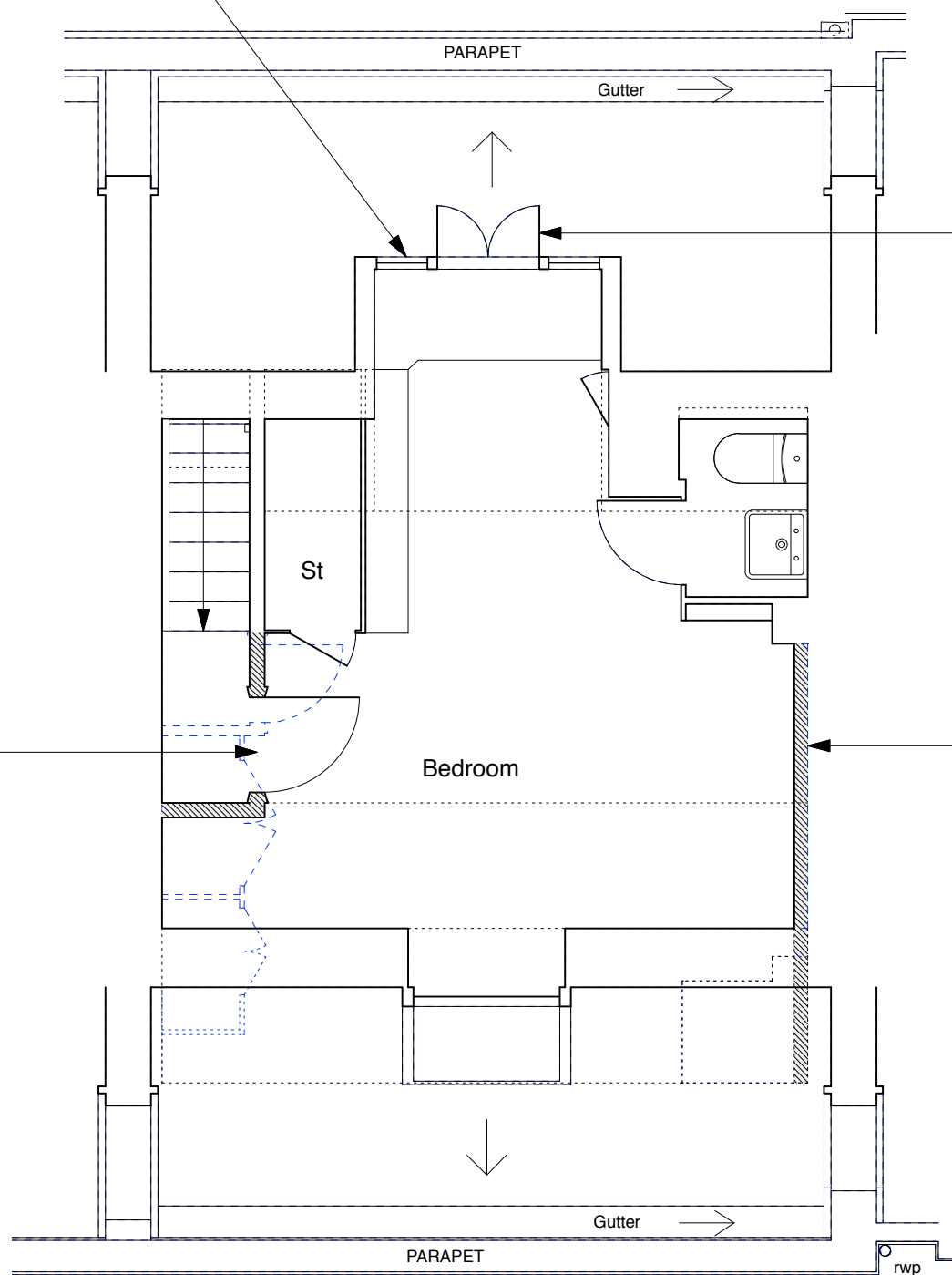


CONSTRUCTION KEY	
	existing retained
	line over/under/behind
	demolished
	new construction



new studwork partition (non loadbearing) finished with plasterboard and Wedi board. plain skirtings ex. 150mm high. flush timber fire door, timber lining & ogee architrave.

new casement window in existing opening (painted timber and double glazed)

no plasterboard drylining (on metal studs) in WC compartment due to lack of space

NOTE:  
Existing, non fire-rated flush internal doors to be replaced with solid timber flush fire doors.



Rev A - 05/04/16 - door opening enlarged

	PROJECT 5 ARCHITECTURE LLP 8 Waterson Street London E2 8HL T: +44 (0)20 7739 9131 F: +44 (0)20 7739 3687 E: info@p5a.co.uk	job title <b>64 FREDERICK STREET, LONDON WC1X 0ND</b>	scale <b>1:50 @ A3</b>	drawn SA	drawing no. <b>6214-FS64-P05A</b>
	drawing <b>THIRD FLOOR PLAN - PROPOSED</b>	date <b>JULY 2015</b>	checked XX		