

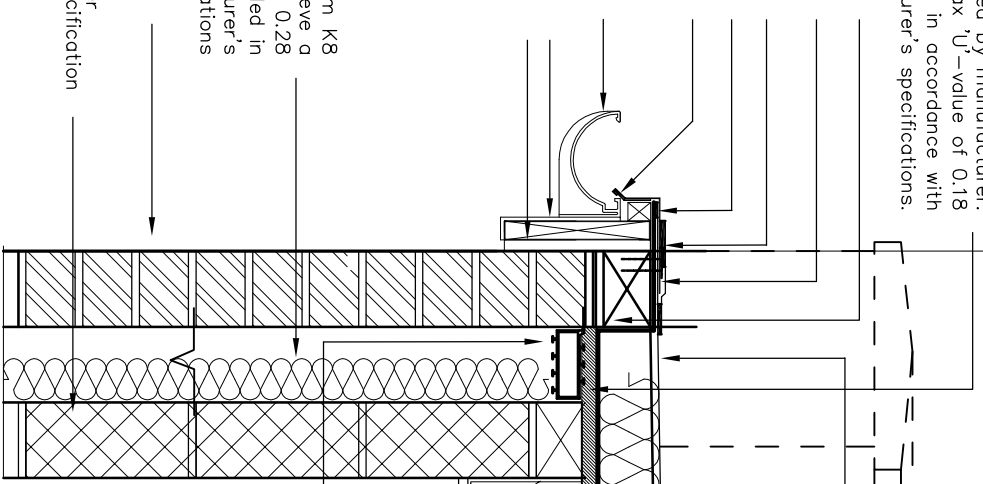
Kingspan Thermataper TT47 FM/LPC roof insulation.
Please refer to drawing produced by manufacturer.
Roof insulation to achieve max 'U'-value of 0.18
W/m²K To be installed in accordance with
manufacturer's specifications.

Preservative Treated timber kerb,
fit to suit fall
Monoplan Coated Metal,
mechanically fastened at 150mm
staggered centres
Hot air weld, minimum 40mm wide
Monobond LT, as sealant strip
Continuous cleat, mechanically
fixed at 300mm centres
uPVC 110mm half-round gutters
around whole of roof eaves.
Colour dark grey matching fascia.
uPVC Fascia Board to match
colour of gutter
Termination Bar with suitable
sealant

60mm Kingspan Kooltherm K8
cavity board to achieve a
maximum 'U'-value of 0.28
W/m²K. To be installed in
accordance with manufacturer's
specifications

External face brick
to match existing.
Internal blockwork as per
structural engineer's specification

DETAIL SECTION: E.E.

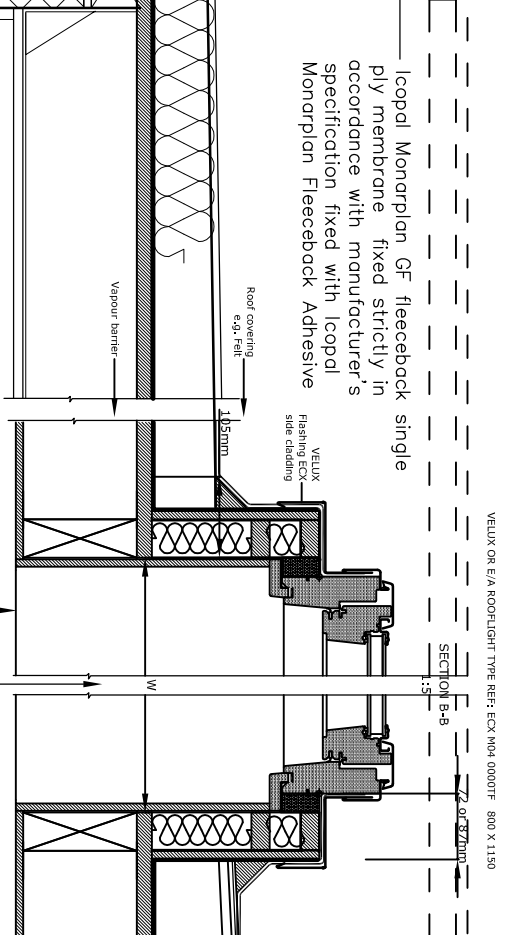


Icopal Monoplan GF fleeceback single
ply membrane fixed strictly in
accordance with manufacturer's
specification fixed with Icopal
Monoplan Fleeceback Adhesive

Proprietary Insulated cavity
closer at head - 'Hylood'
or ea Cavity closers to
revels, cills, and head of cavity.
Timber roof joists 150 x 50 -
refer to engineer's specification

18 mm Plywood fixed to joists,
with Icopal Micoral SK vapour
control layer over boards and
taken up along side of walls

DETAIL SECTION: F.F. DETAIL SECTION: G.G.



Kingspan Thermataper TT47 FM/LPC roof insulation.
Slope to raise from 75mm high to 150mm over 2000mm
length of roof. (2800). Please refer to drawing produced
by manufacturer. Roof insulation to achieve max
'U'-value of 0.18 W/m²K To be installed in
accordance with manufacturer's specifications.

152 x 152mm x 30 UC
TO STRUCTURAL ENGINEERS DETAIL.
225 x 8mm x m.s BRICKWORK SUPPORT
PLATE TO STRUCTURAL ENGINEERS DETAIL.

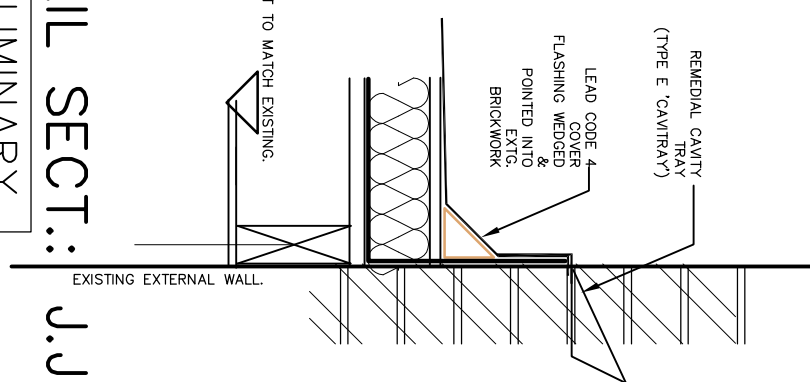
DOUBLE GLAZED ALUMINIUM/STEEL FRAMED
SLIDING DOORS. 2 PAIRS.

100 x 100mm x 6.3 SHS
TO STRUCTURAL ENGINEERS DETAIL.

FLOOR CONSTRUCTION:

CAST 75mm MIN. SCREED WITH ONE LAYER
OF A142 REINFORCING MESH SITUATED CENTRALLY
WITHIN SCREED THICKNESS.
LAY 75mm KINGSPAN KOOLTHERM K3 OR E/A TO PROVIDE A MAX.
'U' VALUE OF 0.22W/m²K UNDER SCREED. A VAPOUR
CONTROL LAYER TO BE LAID OVER THE INSUL.
BOARDS AND TURNED UP 100mm AT ROOM
PERIMETERS BEHIND THE SKIRTING. ALL JOINTS
ARE TO BE LAPPED 150mm & TAPED.

BASE PLATE/FININGS TO THE 100 x 100 x 6.3
SHS TO THE STRUCTURAL ENGINEERS DETAIL.
FINISHED FLOOR LEVEL TO
MATCH THAT TO EXTG. HOUSE.



REMEDIAL CAVITY
TRAY
(TYPE E 'CAVITRAY')

LEAD CODE 4
COVER
FLASHING WEDGED
&
POINTED INTO
EXTG
BRICKWORK

CEILING HEIGHT TO MATCH EXISTING.

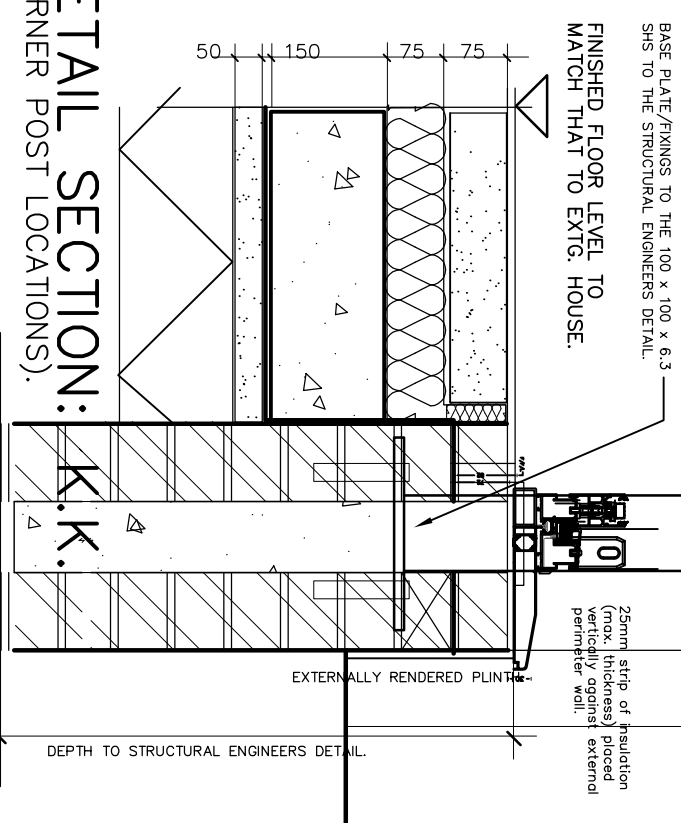
EXISTING EXTERNAL WALL

DETAIL SECT.: J.J.

DETAIL SECTION: D.D.
PRELIMINARY.

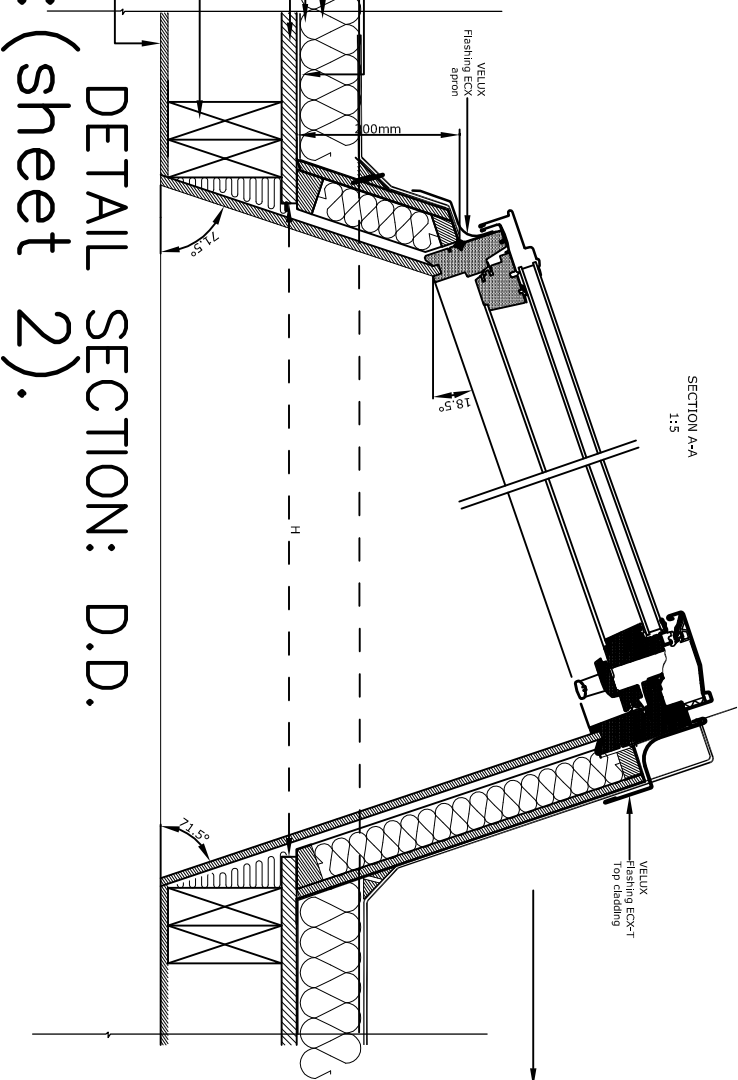
DETAIL SECTION: K.K.
(CORNER POST LOCATIONS).

MASS CONCRETE FOOTING TO STRUCT. ENG'S DETAIL.



25mm strip of insulation
(max. thickness) placed
vertically against
external
perimeter
wall.

DEPTH TO STRUCTURAL ENGINEERS DETAIL.



SECTION A-A
1:5

DETAILS: (sheet 2).

Rev.	Scale: 1:10. Date: 10/02/16 Drawn: LJS	Job 24d FROGNAL LONDON NW3 6AG.	Drawing No. 05/932/BREGS/208/A.	FARROW SILVERTON CHARTERED ARCHITECTS & DESIGN CONSULTANTS	6 HALE LANE MILL HILL LONDON NW7 3NX tel: 020-8906 8502 fax: 020-8906 8503 e-mail: office@farsil.com
------	--	---	---	--	---