

Notes

A-A  
017

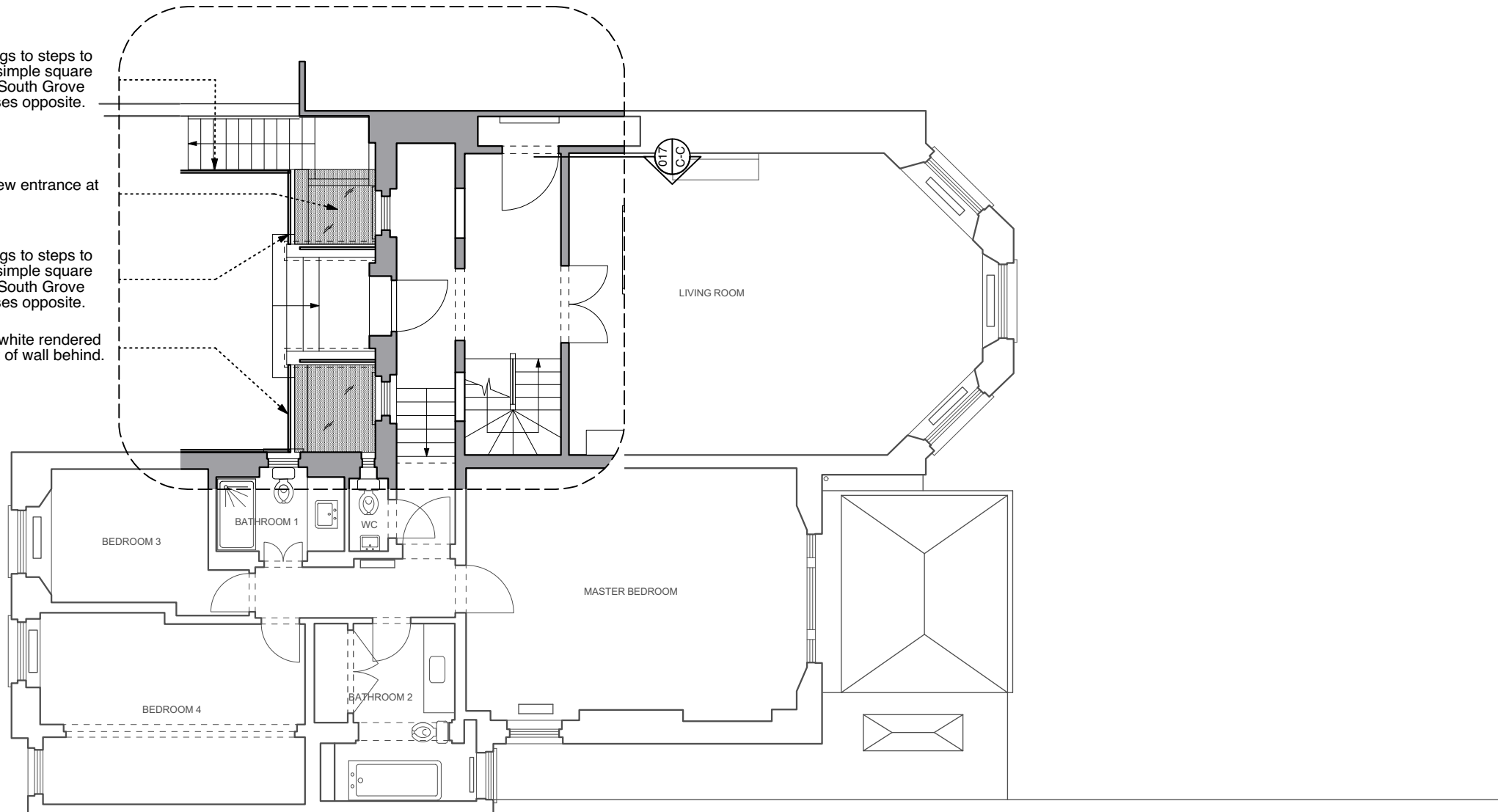
New cast iron railings to steps to match the original simple square section railings on South Grove and in front of houses opposite.

017  
C-C

Glazed roof over new entrance at lower level

New cast iron railings to steps to match the original simple square section railings on South Grove and in front of houses opposite.

New brick parapet white rendered to match lower part of wall behind.



A-A  
017

Revisions

Date:	Rev:	Details:

**STUDIO MACKERETH**

ARCHITECTS  
63a SOUTH AUDLEY STREET  
W1K 2QS

TELEPHONE +44 (0)20 7409 3744  
EMAIL: INFO@STUDIOMACKERETH.COM

Project  
**THE OLD HALL, HIGHGATE**

Drawing Title  
**PROPOSED UPPER GROUND GA**

Scale <b>1:100@A3</b>	Creation Date <b>AUG 2014</b>	Status <b>PLA</b>
--------------------------	----------------------------------	----------------------

Project No. <b>017</b>	Drawing No. <b>PL112</b>	Revision <b>B</b>
---------------------------	-----------------------------	----------------------