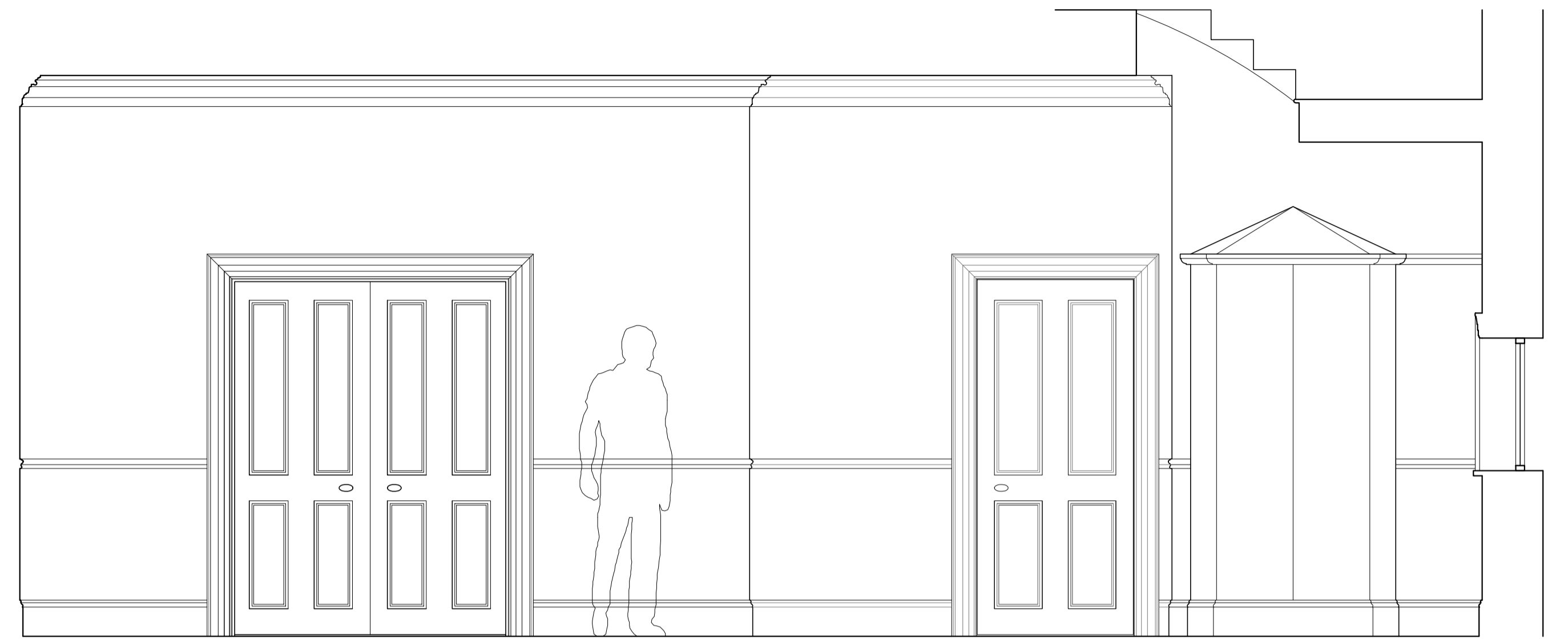
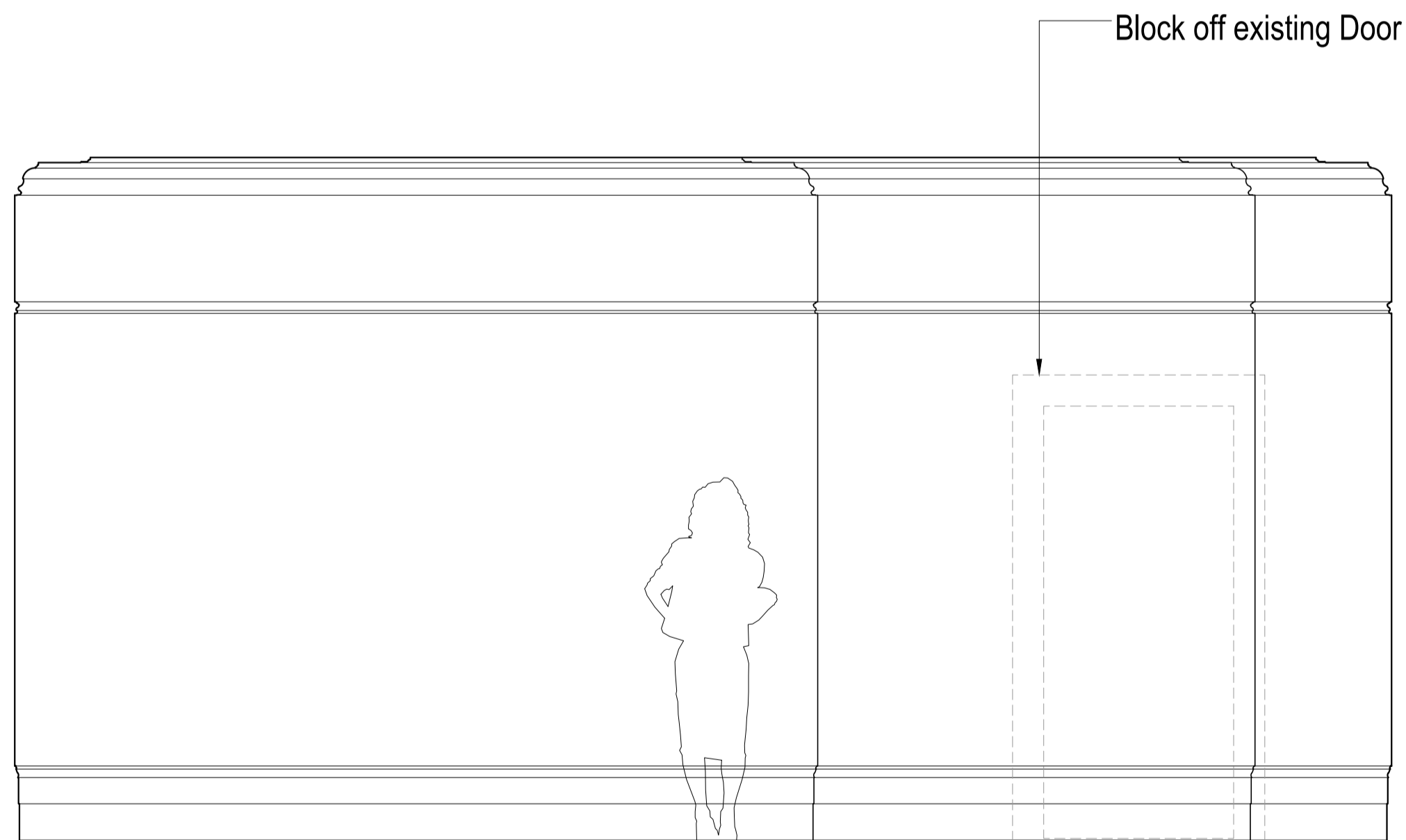


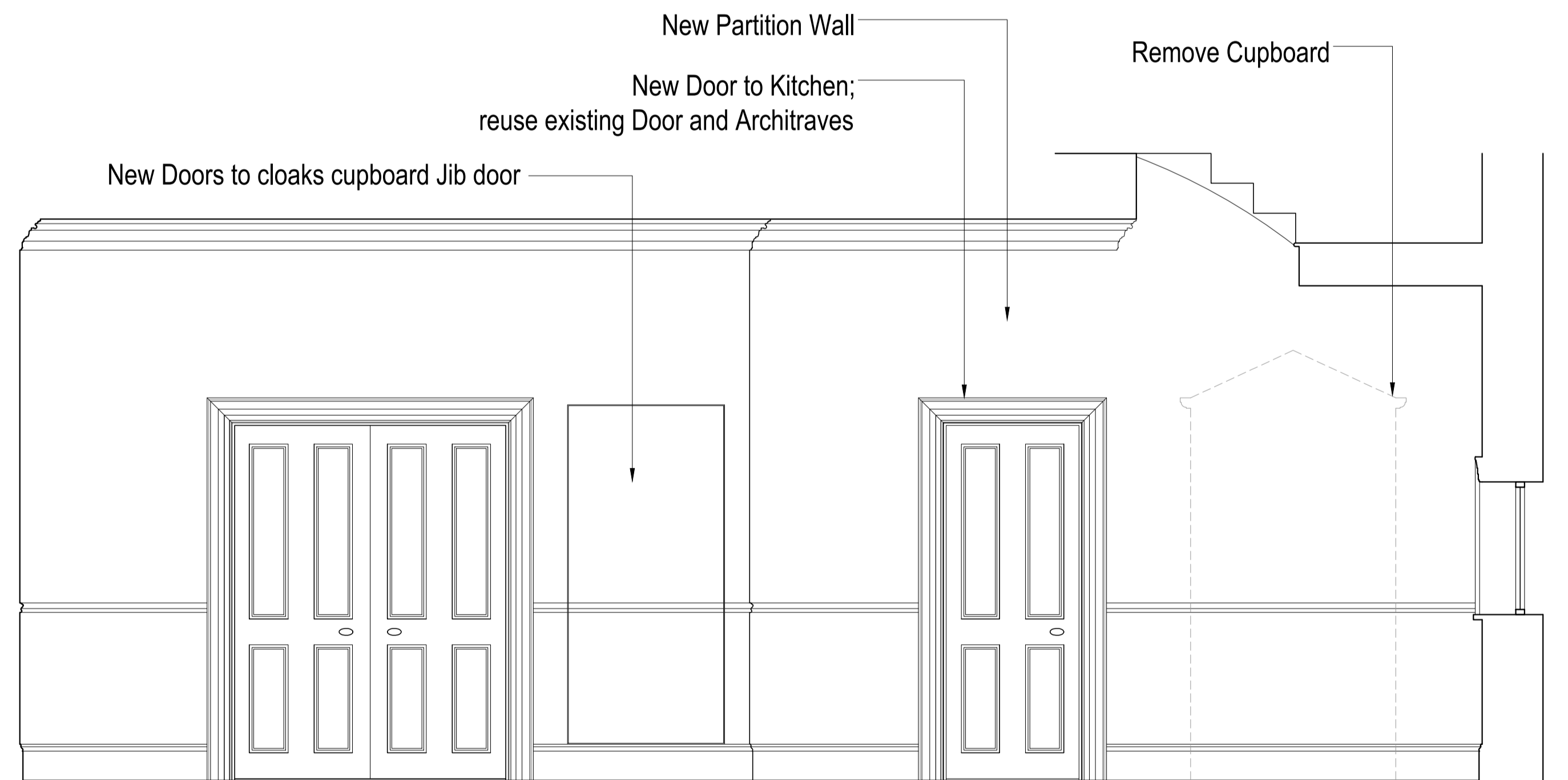
Existing Elevation A - Ground Floor Dining Room



Existing Elevation B - Ground Floor Hall



Proposed Elevation A - Ground Floor Dining Room



Proposed Elevation B - Ground Floor Hall

Issued For	PLANNING
General Notes:	THIS DRAWING HAS BEEN PREPARED BY DS DESIGN SOLUTIONS AND THE DATA CONTAINED HEREIN MAY BE USED OR REPRODUCED ONLY WITH DS DESIGN SOLUTIONS' APPROVAL.

Rev.	Description	Date	Signed	Checked


--

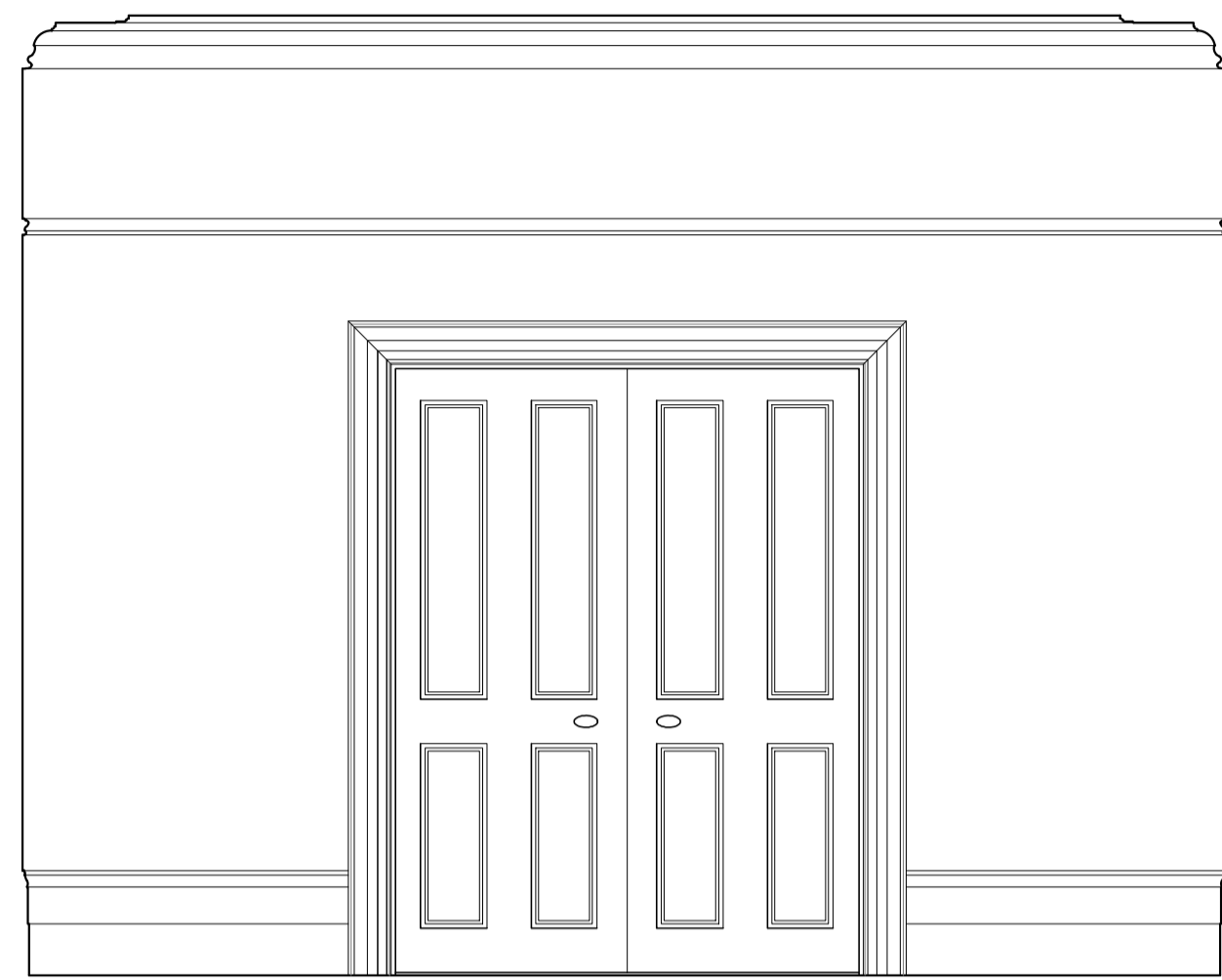
--

--

--

Scale	1:25 @ A1	Date	19.01.2016	Drawn by	AL	Checked by	DS
Drawing Title	Existing & Proposed Internal Elevations Elevations A & B						
Project	8 Prince Albert Road London NW1 7SR						

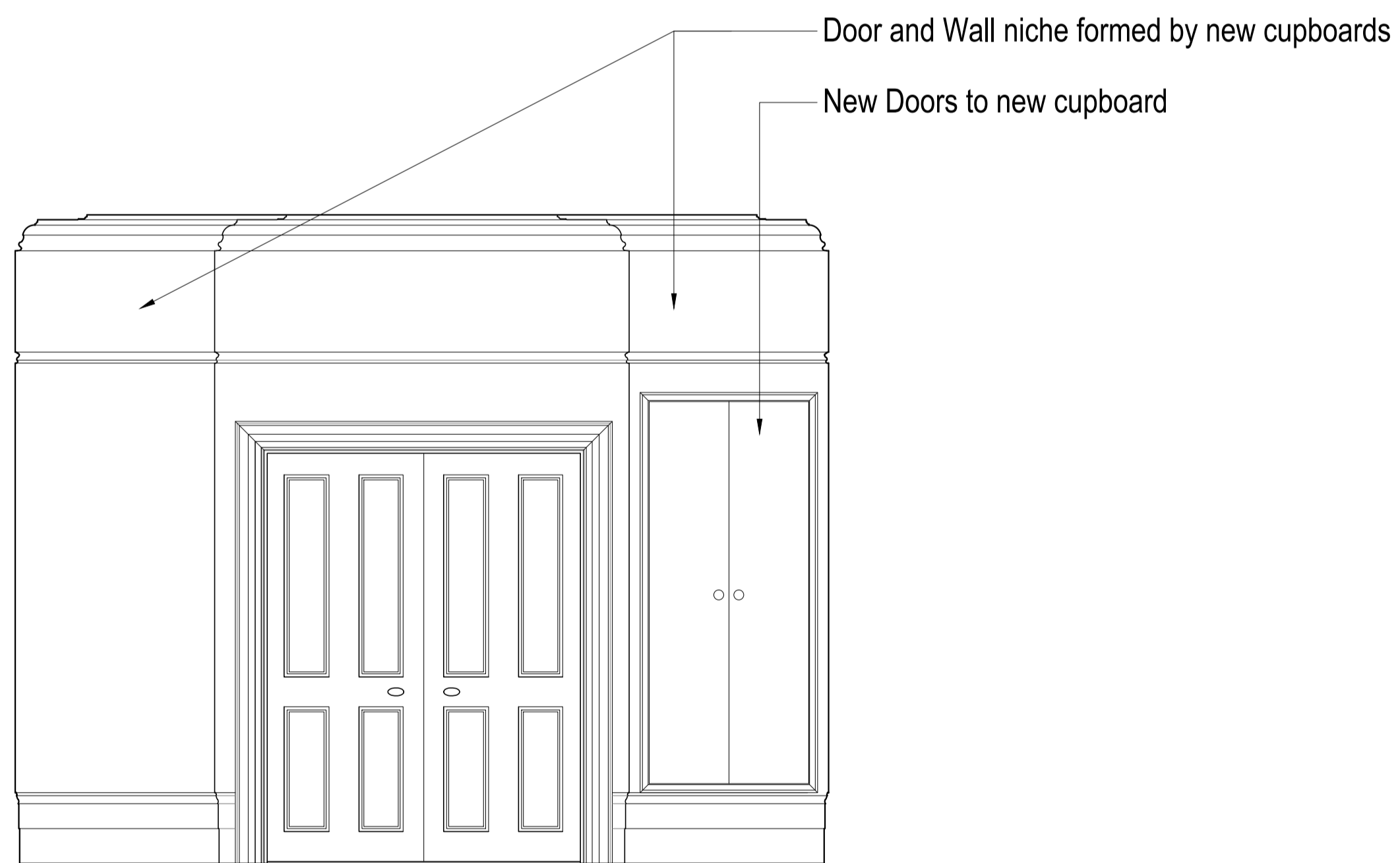
 design solutions www.DesignSolutionsUK.com	561 Finchley Road London NW3 7BJ Phone 020 7433 3939 Fax 020 7794 4279	
	Project no.	16/0313
Drawing no.	140	
Revision	02	



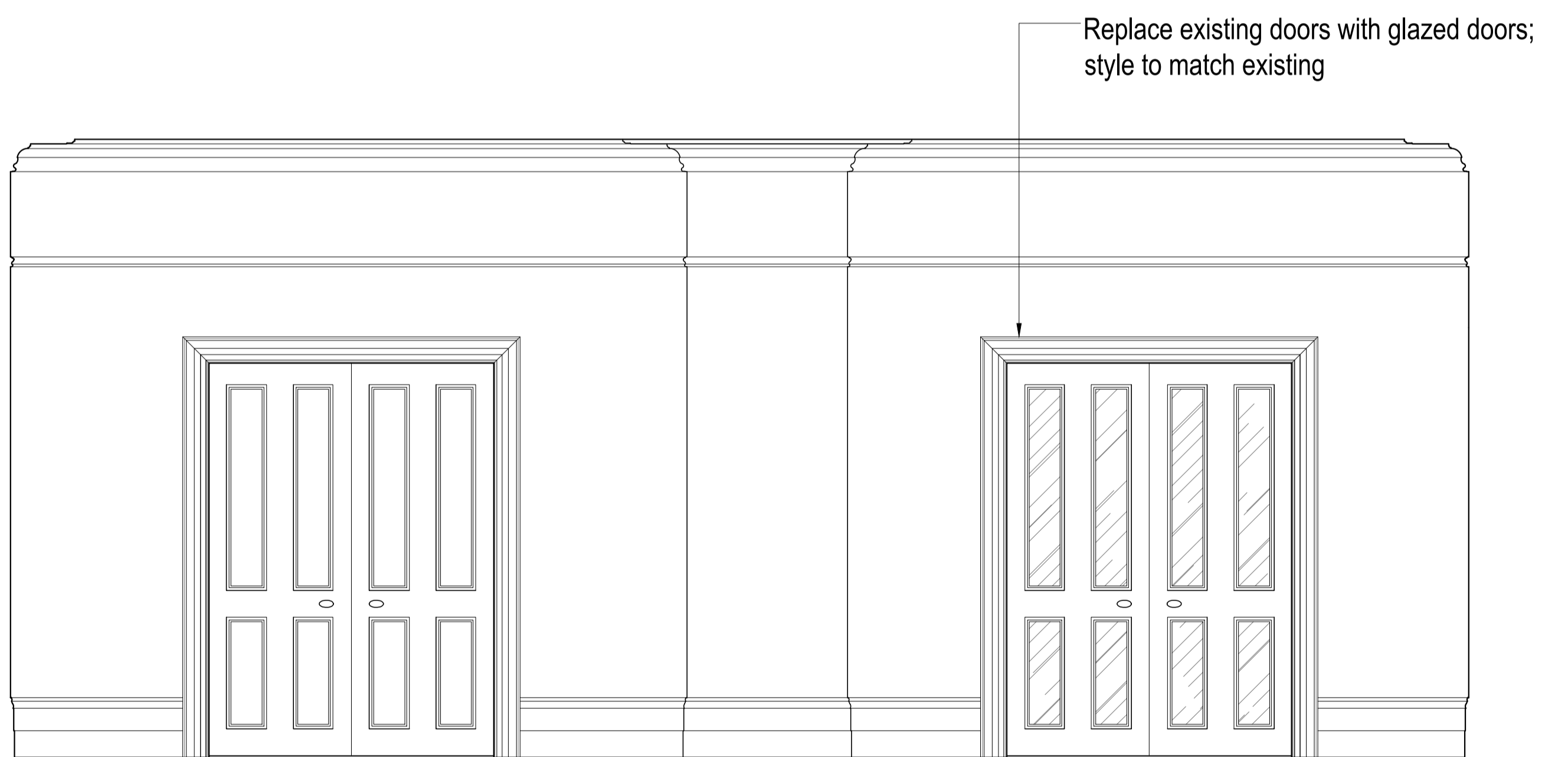
Existing Elevation F - Ground Floor Dining Room



Existing Elevation C - First Floor Living Room



Proposed Elevation F - Ground Floor Dining Room



Proposed Elevation C - First Floor Living Room

Issued For	PLANNING
General Notes:	THIS DRAWING HAS BEEN PREPARED BY DS DESIGN SOLUTIONS AND THE DATA CONTAINED HEREIN MAY BE USED OR REPRODUCED ONLY WITH DS DESIGN SOLUTIONS' APPROVAL.

Rev.	Description	Date	Signed	Checked


--

--

--

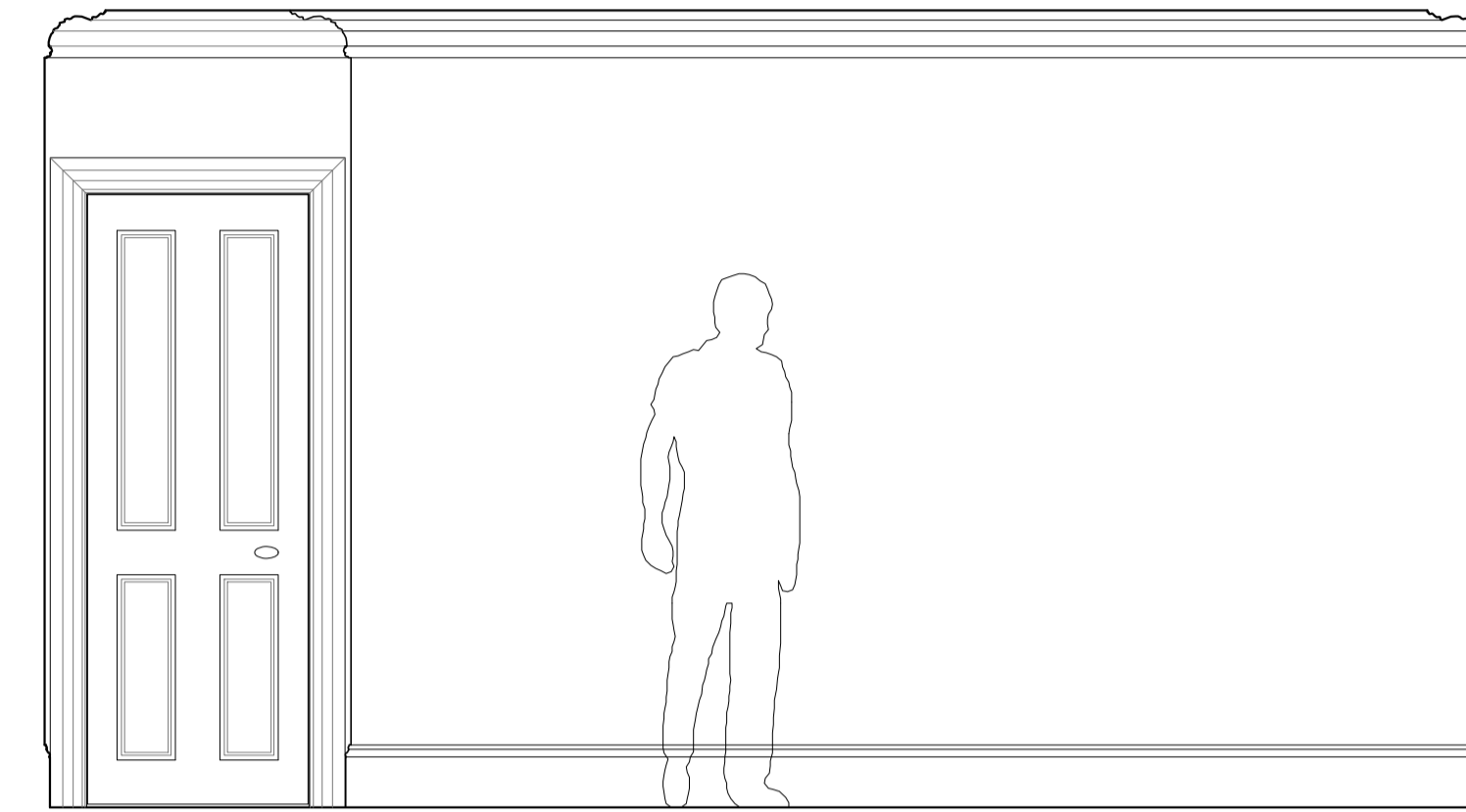
--

Scale	1:25 @ A1	Date	19.01.2016	Drawn by	AL	Checked by	DS
Drawing Title	Existing & Proposed Internal Elevations Elevations C & F						
Project	8 Prince Albert Road London NW1 7SR						

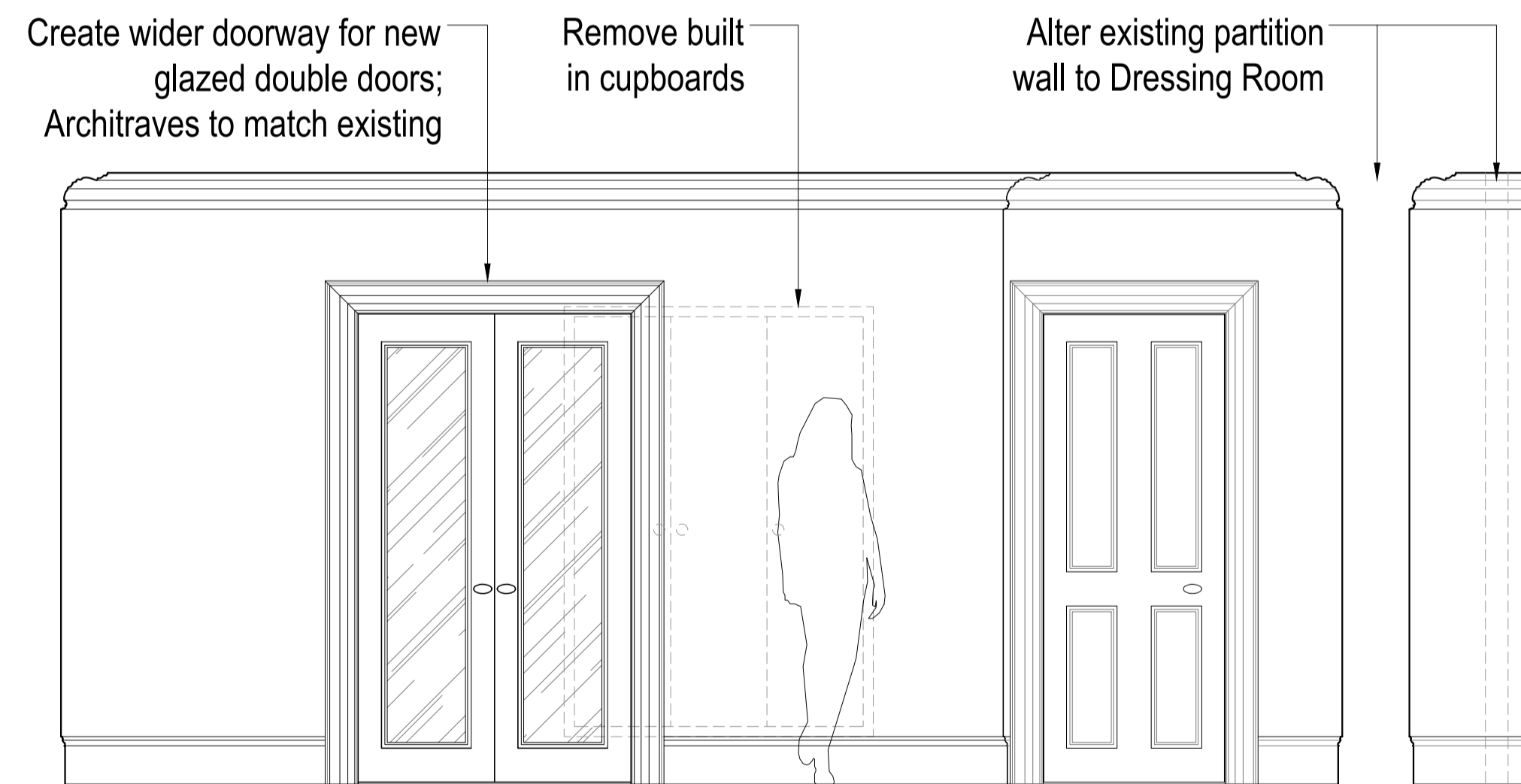
 design solutions www.DesignSolutionsUK.com	561 Finchley Road London NW3 7BJ Phone 020 7433 3939 Fax 020 7794 4279	
	Project no.	16/0313
Drawing no.	141	
Revision	01	



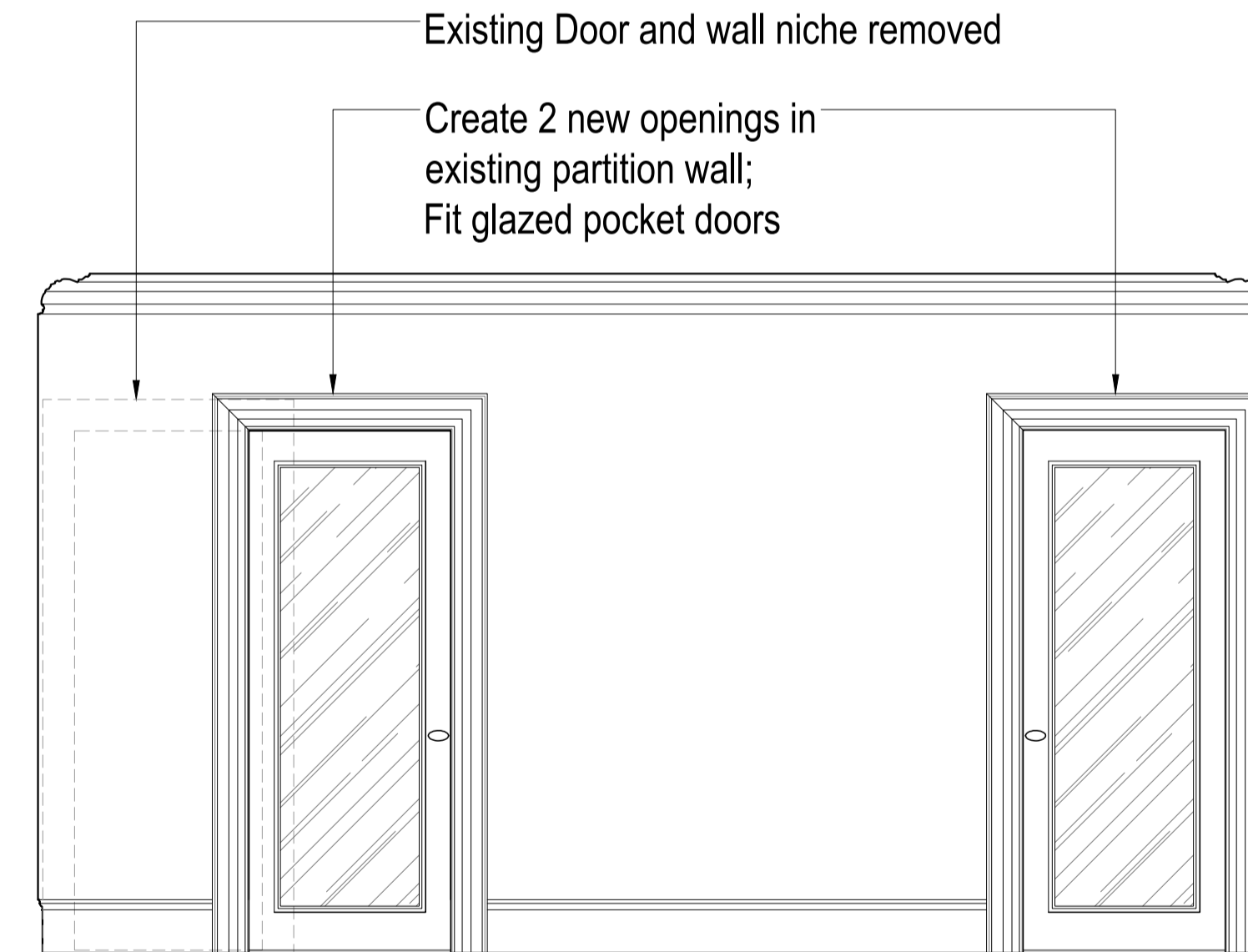
Existing Elevation D - Second Floor Master Bedroom



Existing Elevation E - Second Floor Master Bedroom



Proposed Elevation D - Second Floor Master Bedroom



Proposed Elevation E - Second Floor Master Bedroom

Issued For	PLANNING
General Notes:	THIS DRAWING HAS BEEN PREPARED BY DS DESIGN SOLUTIONS AND THE DATA CONTAINED HEREIN MAY BE USED OR REPRODUCED ONLY WITH DS DESIGN SOLUTIONS' APPROVAL.

Rev.	Description	Date	Signed	Checked


--

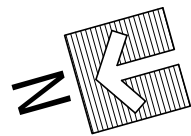
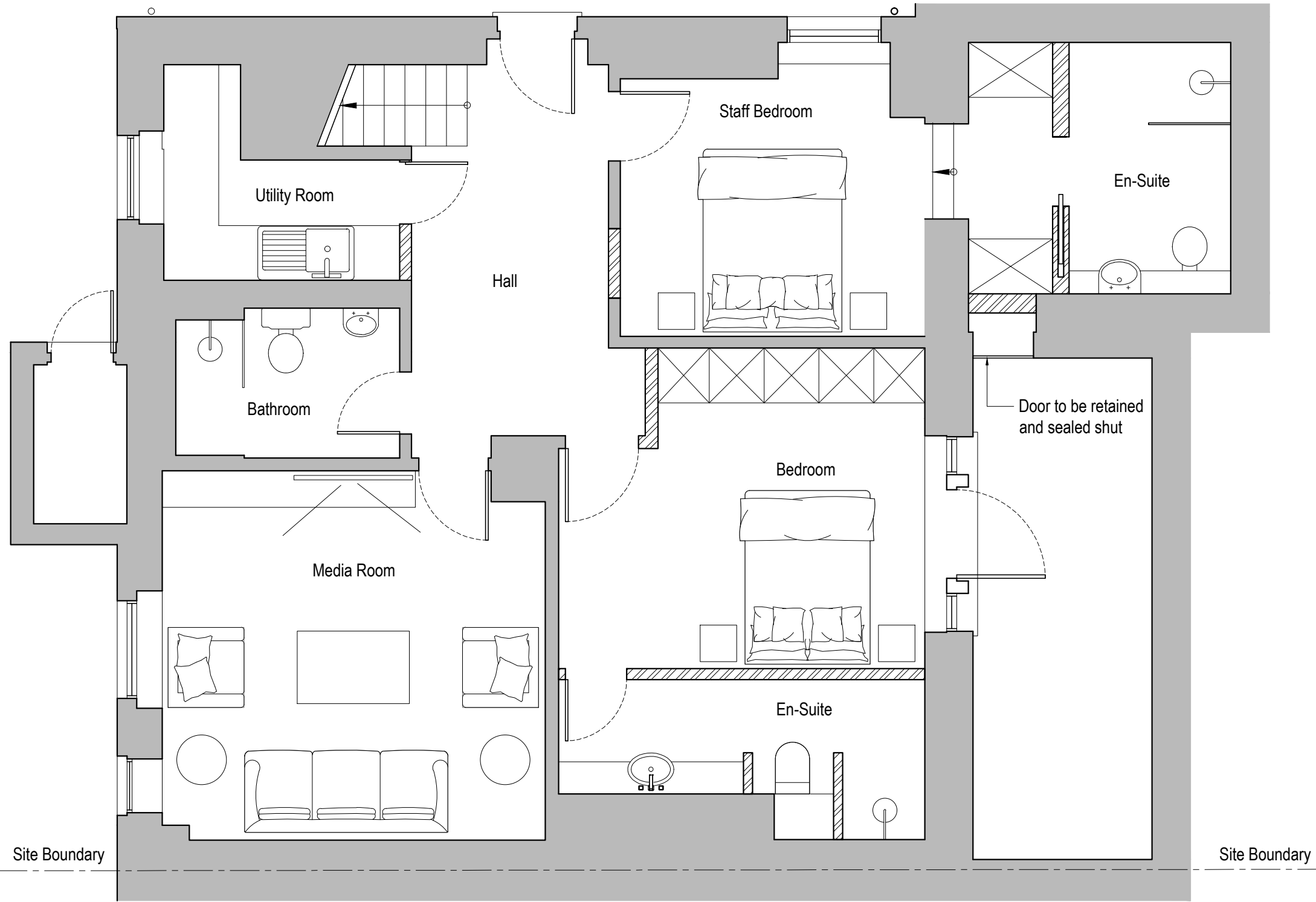
--

--


--

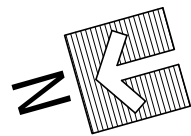
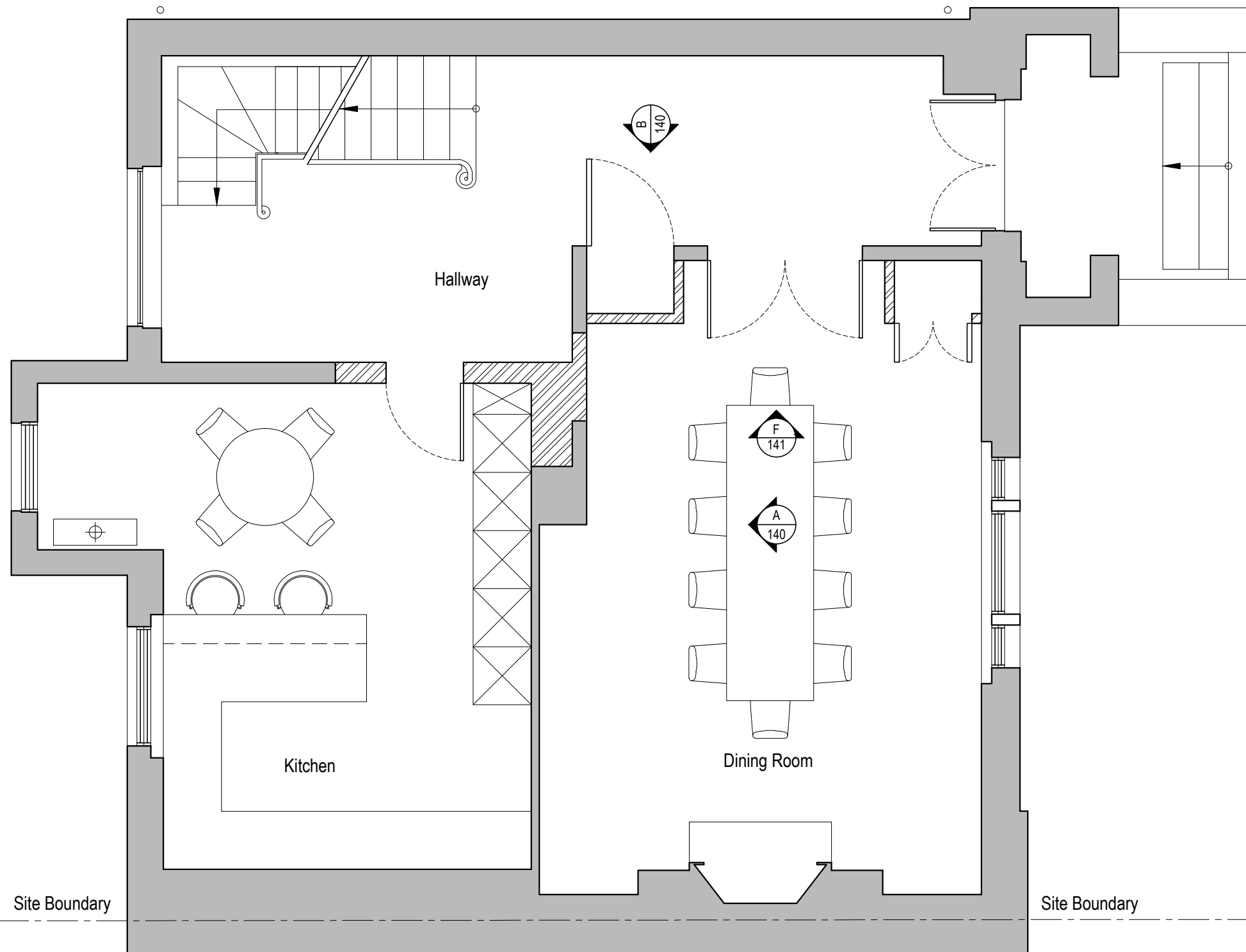
Scale	1:25 @ A1	Date	19.01.2016	Drawn by	AL	Checked by	DS
Drawing Title	Existing & Proposed Internal Elevations Elevations C & D						
Project	8 Prince Albert Road London NW1 7SR						

 design solutions	561 Finchley Road London NW3 7BJ Phone 020 7433 3939 Fax 020 7794 4279 www.DesignSolutionsUK.com		
	Project no.	16/0313	Revision



Proposed Basement Floor GA Plan
Scale 1:50 @ A3

Issued For PLANNING	Rev.	Description	Date	Signed	Checked			Scale	Date	Drawn by	Checked by	 561 Finchley Road London NW3 7BJ Phone 020 7433 3939 Fax 020 7794 4279 www.DesignSolutionsUK.com
								1:50 @ A3	19.01.2016	ME	DS	
General Notes: THIS DRAWING HAS BEEN PREPARED BY DS DESIGN SOLUTIONS AND THE DATA CONTAINED HEREIN MAY BE USED OR REPRODUCED ONLY WITH DS DESIGN SOLUTIONS' APPROVAL.							Project 8 Prince Albert Road London NW1 7SR	Project no. 14/0313	Drawing no. 101	Revision P01		



Proposed Ground Floor GA Plan
Scale 1:50 @ A3

Issued For PLANNING
General Notes: THIS DRAWING HAS BEEN PREPARED BY DS DESIGN SOLUTIONS AND THE DATA CONTAINED HEREIN MAY BE USED OR REPRODUCED ONLY WITH DS DESIGN SOLUTIONS' APPROVAL.

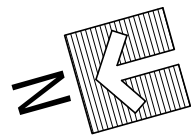
Rev.	Description	Date	Signed	Checked

--

--

Scale 1:50 @ A3	Date 19.01.2016	Drawn by ME	Checked by DS
Drawing Title Proposed Plan Ground Floor GA Plan			
Project 8 Prince Albert Road London NW1 7SR			

 561 Finchley Road London NW3 7BJ Phone 020 7433 3939 Fax 020 7794 4279 www.DesignSolutionsUK.com		
Project no. 14/0313	Drawing no. 102	Revision P01



Proposed First Floor GA Plan
Scale 1:50 @ A3

Issued For PLANNING
General Notes: THIS DRAWING HAS BEEN PREPARED BY DS DESIGN SOLUTIONS AND THE DATA CONTAINED HEREIN MAY BE USED OR REPRODUCED ONLY WITH DS DESIGN SOLUTIONS' APPROVAL.

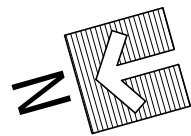
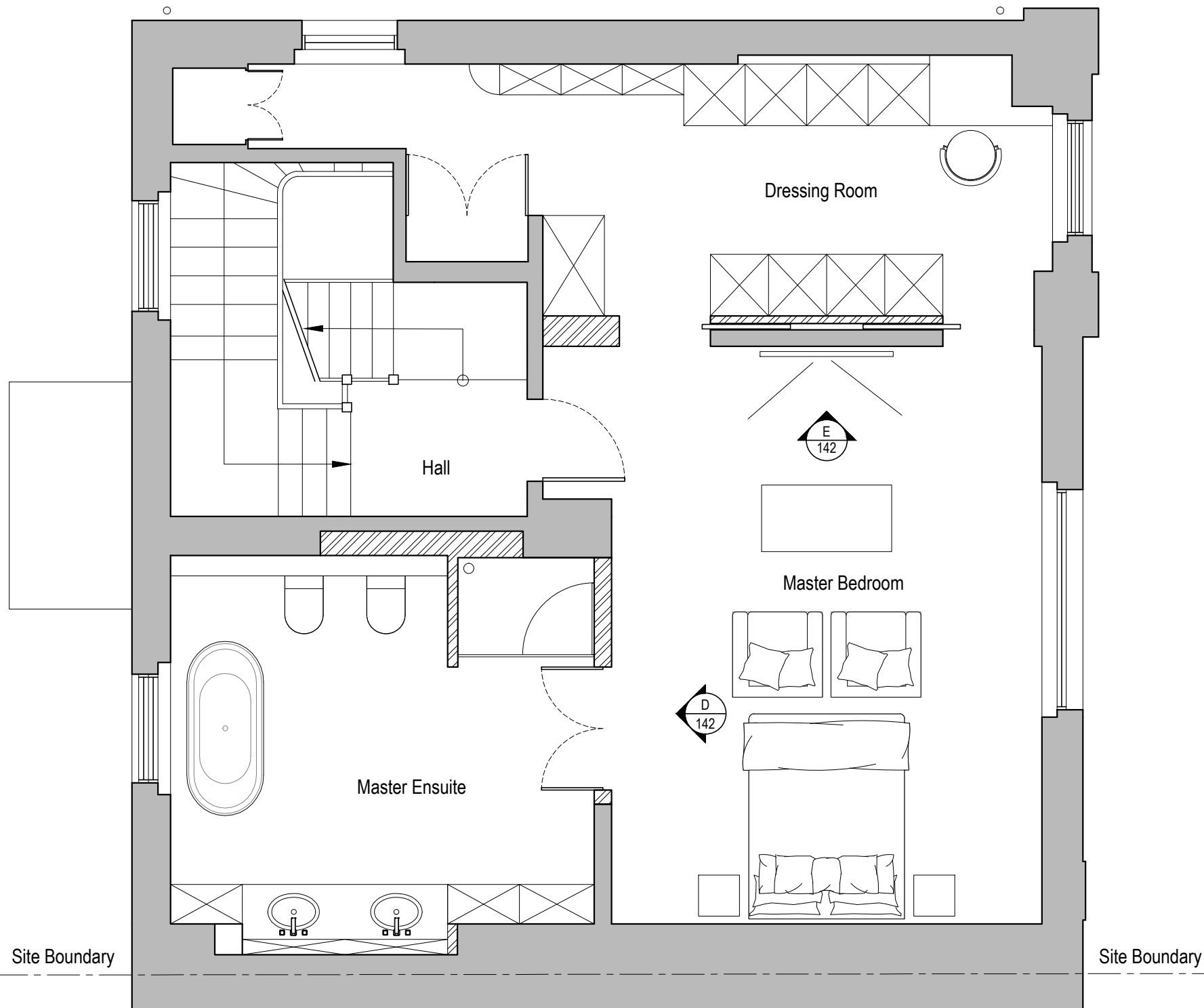
Rev.	Description	Date	Signed	Checked

--

--

Scale 1:50 @ A3	Date 19.01.2016	Drawn by ME	Checked by DS
Drawing Title Proposed Plan First Floor GA Plan			
Project 8 Prince Albert Road London NW1 7SR			

		561 Finchley Road London NW3 7BJ Phone 020 7433 3939 Fax 020 7794 4279 www.DesignSolutionsUK.com
Project no. 14/0313	Drawing no. 103	Revision P01



Proposed Second Floor GA Plan
Scale 1:50 @ A3


Issued For PLANNING
General Notes: THIS DRAWING HAS BEEN PREPARED BY DS DESIGN SOLUTIONS AND THE DATA CONTAINED HEREIN MAY BE USED OR REPRODUCED ONLY WITH DS DESIGN SOLUTIONS' APPROVAL.

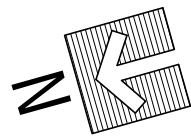
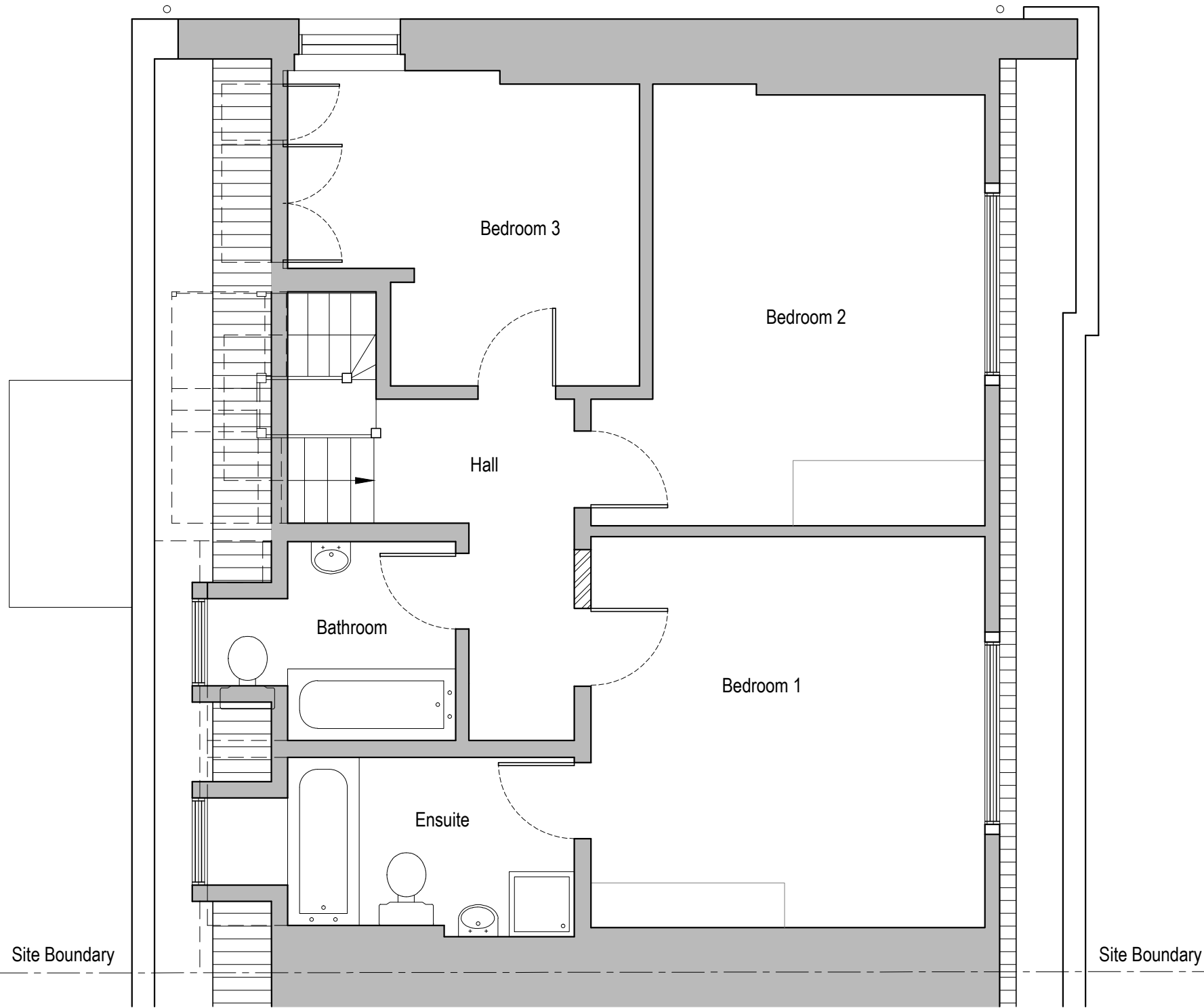
Rev.	Description	Date	Signed	Checked

--

--

Scale 1:50 @ A3	Date 19.01.2016	Drawn by ME	Checked by DS
Drawing Title Proposed Plan Second Floor GA Plan			
Project 8 Prince Albert Road London NW1 7SR			

		561 Finchley Road London NW3 7BJ Phone 020 7433 3939 Fax 020 7794 4279 www.DesignSolutionsUK.com
Project no. 14/0313	Drawing no. 104	Revision P01



Proposed Third Floor GA Plan
Scale 1:50 @ A3

Issued For	PLANNING
General Notes:	THIS DRAWING HAS BEEN PREPARED BY DS DESIGN SOLUTIONS AND THE DATA CONTAINED HEREIN MAY BE USED OR REPRODUCED ONLY WITH DS DESIGN SOLUTIONS' APPROVAL.

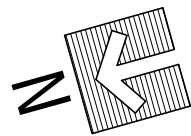
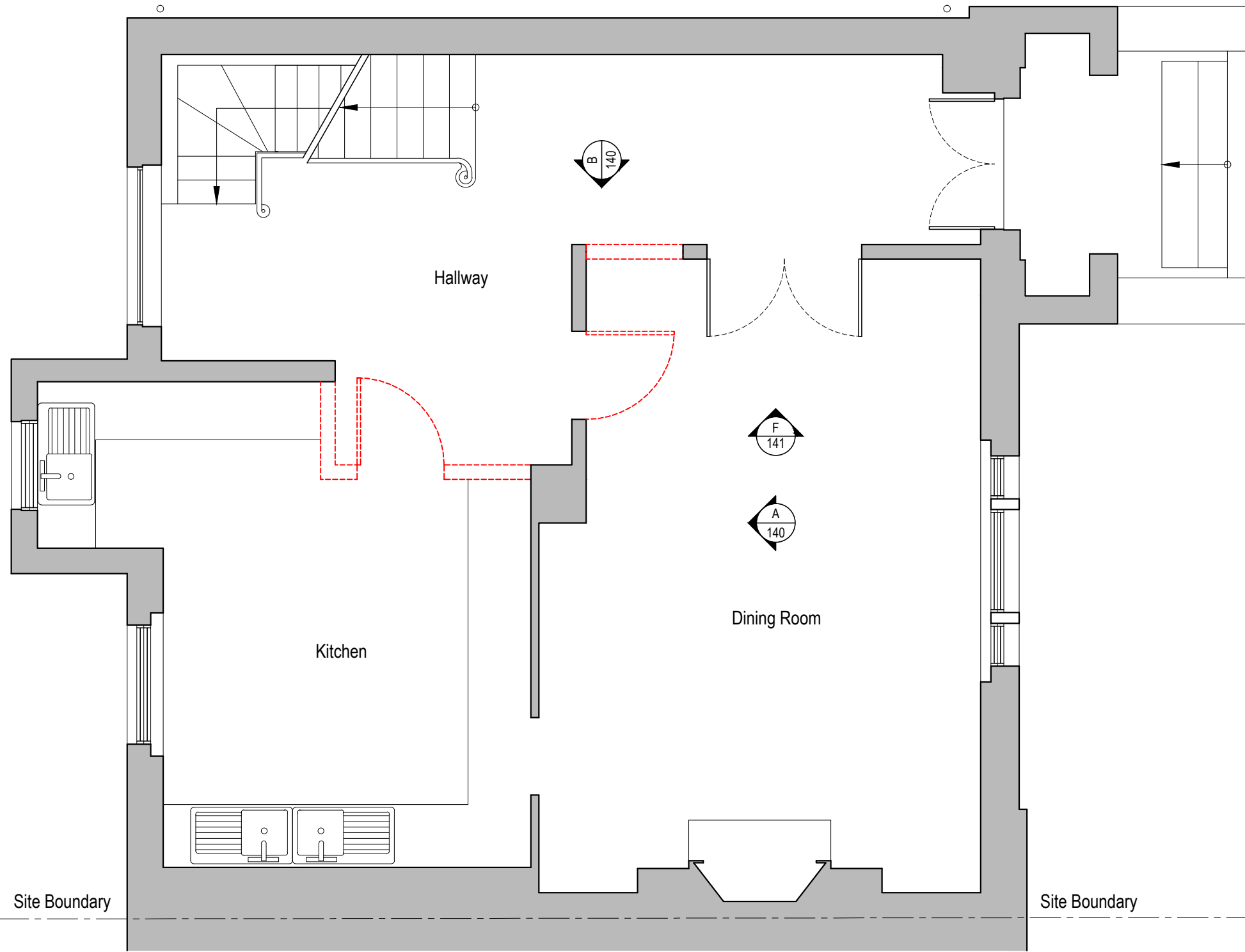
Rev.	Description	Date	Signed	Checked

--

--

Scale	Date	Drawn by	Checked by
1:50 @ A3	19.01.2016	ME	DS
Drawing Title			
Proposed Plan Third Floor GA Plan			
Project			
8 Prince Albert Road London NW1 7SR			

		561 Finchley Road London NW3 7BJ Phone 020 7433 3939 Fax 020 7794 4279 www.DesignSolutionsUK.com
Project no.	Drawing no.	Revision
14/0313	105	P01



Demolition Ground Floor GA Plan
Scale 1:50 @ A3

Issued For
PLANNING


General Notes:
THIS DRAWING HAS BEEN PREPARED BY DS DESIGN SOLUTIONS AND THE DATA CONTAINED HEREIN MAY BE USED OR REPRODUCED ONLY WITH DS DESIGN SOLUTIONS' APPROVAL.

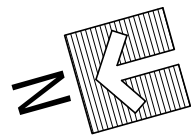
Rev.	Description	Date	Signed	Checked

--

--

Scale 1:50 @ A3	Date 19.01.2016	Drawn by ME	Checked by DS
Drawing Title Demolition Plan Ground Floor GA Plan			
Project 8 Prince Albert Road London NW1 7SR			

 design solutions www.DesignSolutionsUK.com	561 Finchley Road London NW3 7BJ Phone 020 7433 3939 Fax 020 7794 4279	
	Project no. 14/0313	Drawing no. 202



Demolition First Floor GA Plan
Scale 1:50 @ A3


Issued For PLANNING
General Notes: THIS DRAWING HAS BEEN PREPARED BY DS DESIGN SOLUTIONS AND THE DATA CONTAINED HEREIN MAY BE USED OR REPRODUCED ONLY WITH DS DESIGN SOLUTIONS' APPROVAL.

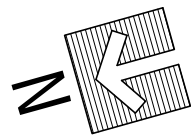
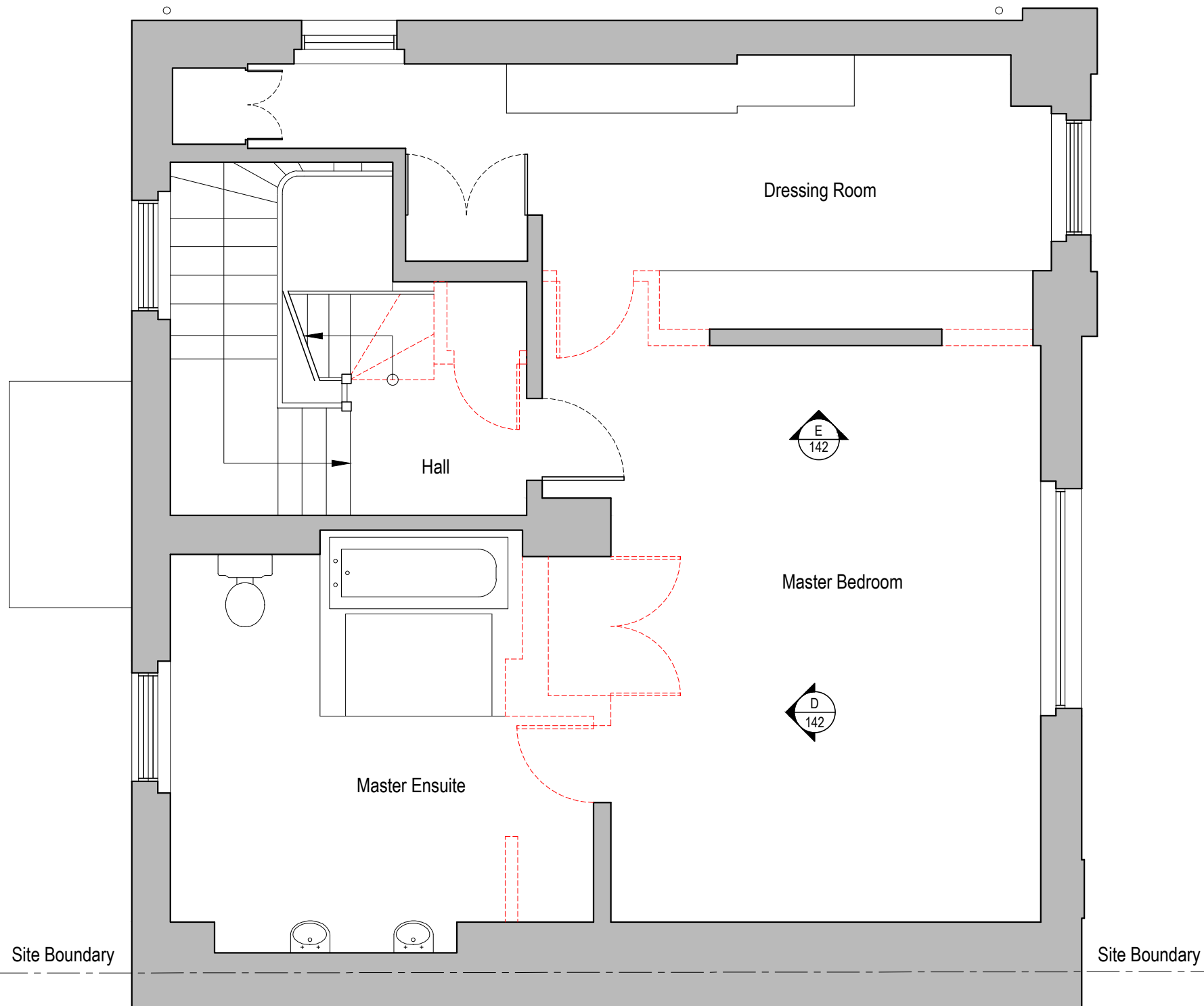
Rev.	Description	Date	Signed	Checked

--

--

Scale 1:50 @ A3	Date 19.01.2016	Drawn by ME	Checked by DS
Drawing Title Demolition Plan First Floor GA Plan			
Project 8 Prince Albert Road London NW1 7SR			

 561 Finchley Road London NW3 7BJ Phone 020 7433 3939 Fax 020 7794 4279 www.DesignSolutionsUK.com		
Project no. 14/0313	Drawing no. 203	Revision P00



Demolition Second Floor GA Plan
Scale 1:50 @ A3

Issued For PLANNING
General Notes: THIS DRAWING HAS BEEN PREPARED BY DS DESIGN SOLUTIONS AND THE DATA CONTAINED HEREIN MAY BE USED OR REPRODUCED ONLY WITH DS DESIGN SOLUTIONS' APPROVAL.

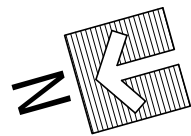
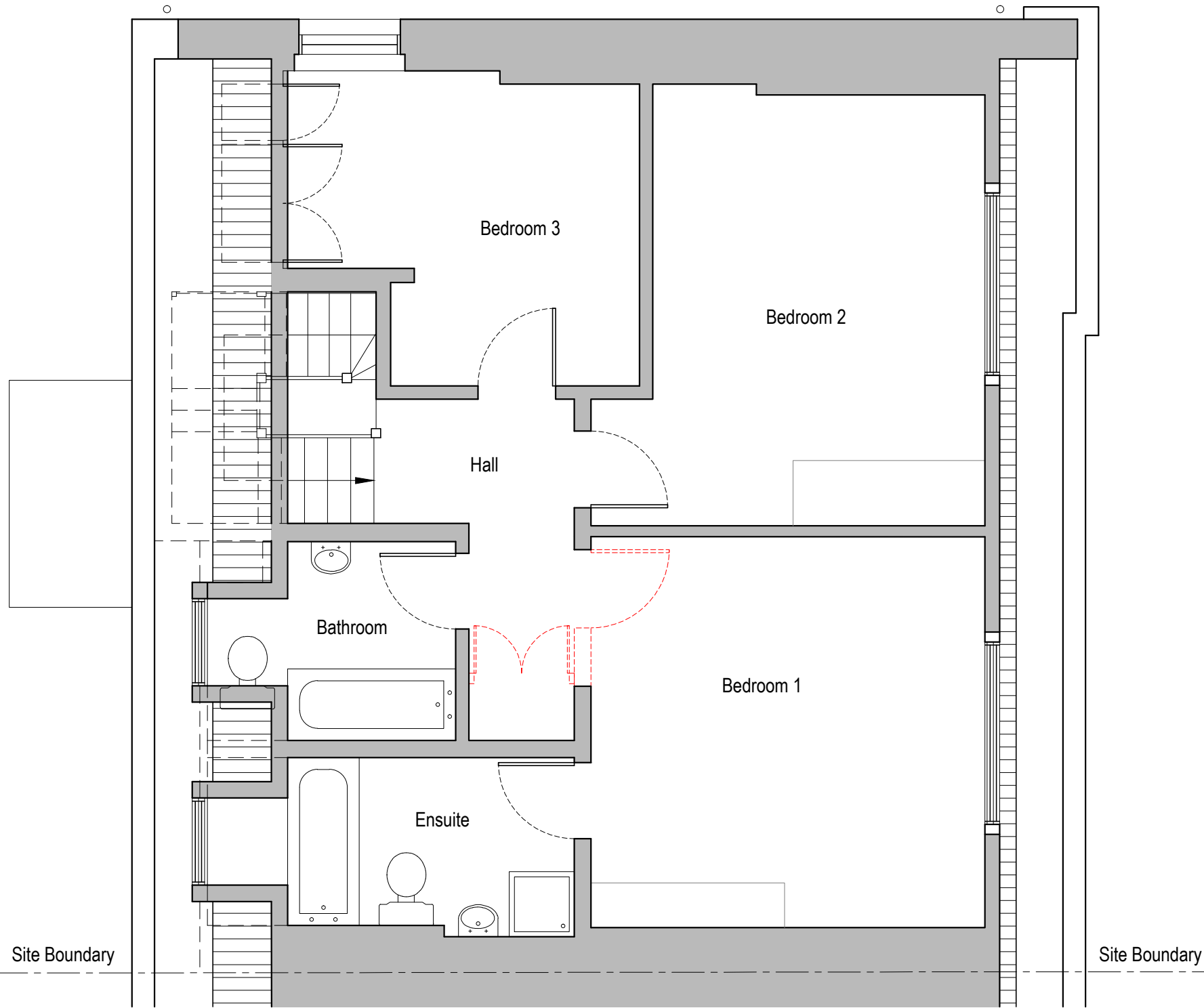
Rev.	Description	Date	Signed	Checked

--

--

Scale 1:50 @ A3	Date 19.01.2016	Drawn by ME	Checked by DS
Drawing Title Demolition Plan Second Floor GA Plan			
Project 8 Prince Albert Road London NW1 7SR			

 design solutions www.DesignSolutionsUK.com	561 Finchley Road London NW3 7BJ Phone 020 7433 3939 Fax 020 7794 4279		
	Project no. 14/0313	Drawing no. 204	Revision P01



Demolition Third Floor GA Plan
Scale 1:50 @ A3

Issued For
PLANNING


General Notes:
THIS DRAWING HAS BEEN PREPARED BY DS DESIGN SOLUTIONS AND THE DATA CONTAINED HEREIN MAY BE USED OR REPRODUCED ONLY WITH DS DESIGN SOLUTIONS' APPROVAL.

Rev.	Description	Date	Signed	Checked

--

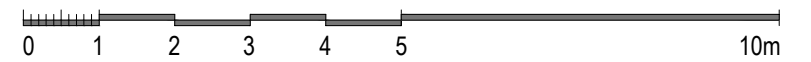
--

Scale	Date	Drawn by	Checked by
1:50 @ A3	19.01.2016	ME	DS
Drawing Title Demolition Plan Third Floor GA Plan			
Project 8 Prince Albert Road London NW1 7SR			

	561 Finchley Road London NW3 7BJ Phone 020 7433 3939 Fax 020 7794 4279 www.DesignSolutionsUK.com		
	Project no. 14/0313	Drawing no. 205	Revision P01



Existing Side Elevation



Issued For
PLANNING

General Notes:
THIS DRAWING HAS BEEN PREPARED BY DS DESIGN SOLUTIONS AND THE DATA CONTAINED HEREIN MAY BE USED OR REPRODUCED ONLY WITH DS DESIGN SOLUTIONS' APPROVAL.

Rev.	Description	Date	Signed	Checked

--

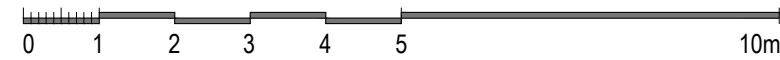
Scale 1:100 @ A3 1:50 @ A1

Scale 1:100 @ A3	Date 19.01.2016	Drawn by AL	Checked by DS
Drawing Title Existing Elevation Side Elevations			
Project 8 Prince Albert Road London NW1 7SR			

	561 Finchley Road London NW3 7BJ Phone 020 7433 3939 Fax 020 7794 4279 www.DesignSolutionsUK.com		
	Project no. 14/0313	Drawing no. 023	Revision P01



Proposed Side Elevation



Issued For
PLANNING

General Notes:
THIS DRAWING HAS BEEN PREPARED BY DS DESIGN SOLUTIONS AND THE DATA CONTAINED HEREIN MAY BE USED OR REPRODUCED ONLY WITH DS DESIGN SOLUTIONS' APPROVAL.

Rev.	Description	Date	Signed	Checked

--

Scale 1:100 @ A3 1:50 @ A1

Scale 1:100 @ A3	Date 19.01.2016	Drawn by AL	Checked by DS
Drawing Title Proposed Elevation Side Elevations			
Project 8 Prince Albert Road London NW1 7SR			

	561 Finchley Road London NW3 7BJ Phone 020 7433 3939 Fax 020 7794 4279 www.DesignSolutionsUK.com		
	Project no. 14/0313	Drawing no. 123	Revision P01