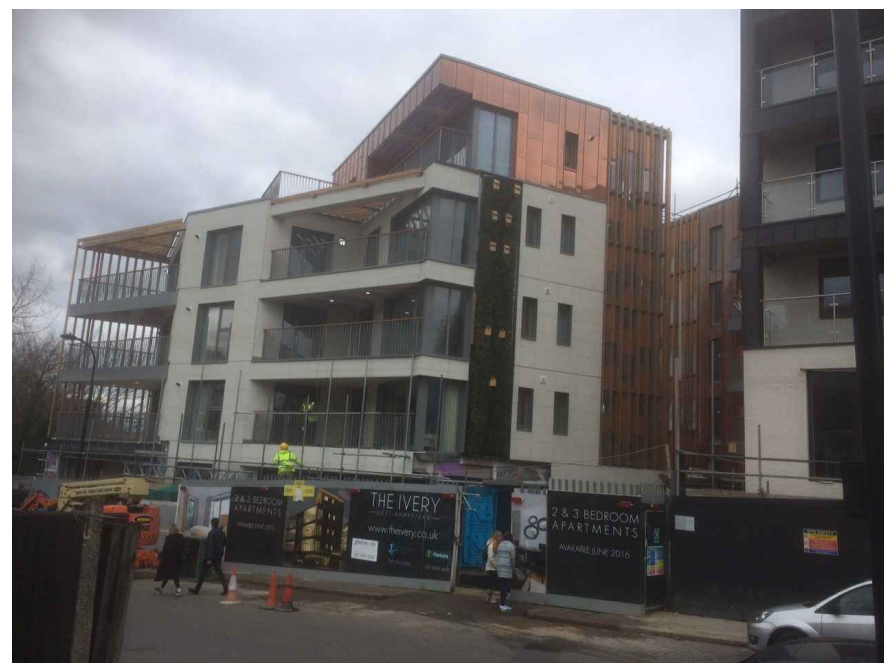




61 Maygrove

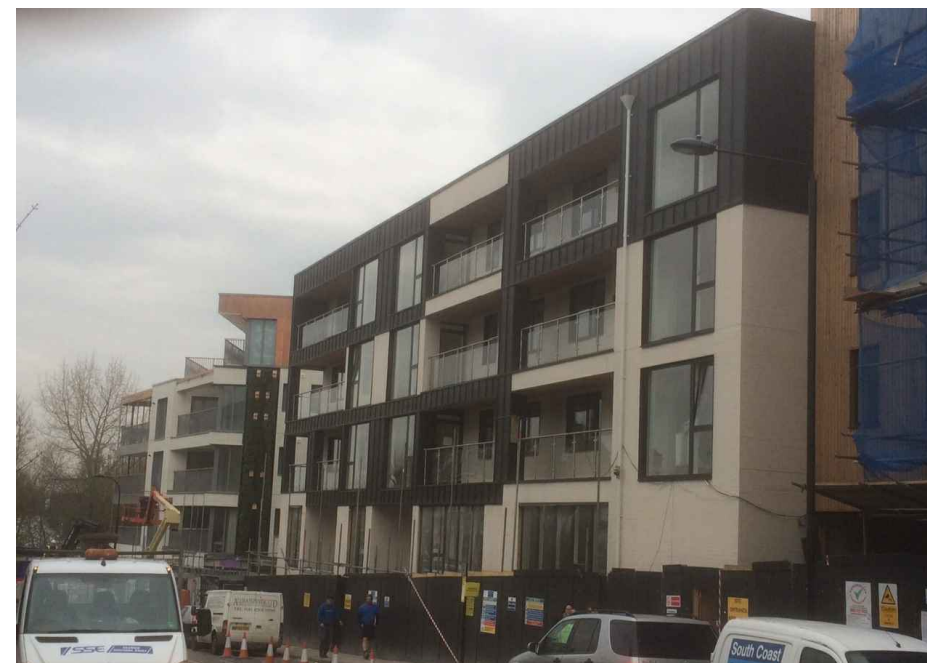
note:
plastic trims to window reveals redundant
galvanized metal balustrades
silver foil to block out lower part of window
for privacy

Buildings on Iverson Road and Maygrove Road



The Ivory Development. Iverson Road

note:
Use of numerous materials: large porcelain tiles, copper cladding,
galvanized metal balustrades, timber pergola, green wall



New development on Iverson Road

note:
Use of numerous materials: white imitation brick tiles, black zinc, grey zinc,
timber cladding, white drain water pipes, glass balustrades,
complicated junctions resulting in poor detailing

/ 06/04/16 Planning
amendment
rev date amendment
project 73 Maygrove Road
scale n/a
drawing Site context

drawing no. PL-503

Paul+O Architects Ltd
Unit 8, 73 Maygrove Road
NW6 2EG
t/f +44 020 7604 3818
www.paul-o-architects.com