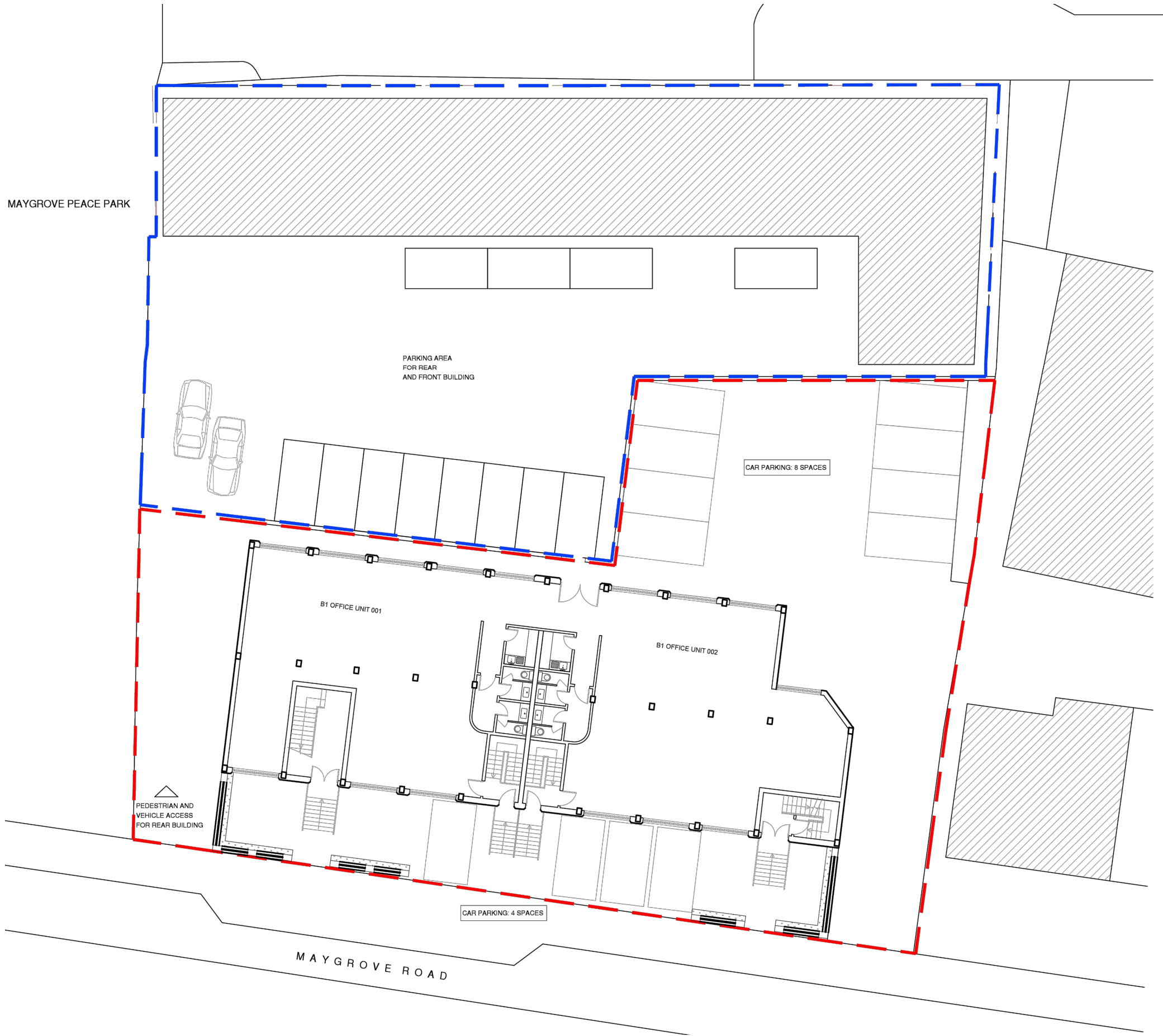


notes

- - - BOUNDARY OF APPLICATION SITE
- - - SITE IN CLIENT OWNERSHIP

TOTAL PARKING:
 CAR PARKING 12



MAYGROVE PEACE PARK

PARKING AREA FOR REAR AND FRONT BUILDING

CAR PARKING: 8 SPACES

B1 OFFICE UNIT 001

B1 OFFICE UNIT 002

PEDESTRIAN AND VEHICLE ACCESS FOR REAR BUILDING

CAR PARKING: 4 SPACES

MAYGROVE ROAD

M 1:200

0 2.0 4.0 6.0 8.0 10.0 12.0 14.0 16.0 18.0 20.0



/ 06/04/16 Planning amendment
 rev date amendment
 project 73 Maygrove Road
 scale 1:200
 drawing Proposed Site Plan

drawing no. PL-012

Paul+O Architects Ltd
 Unit 8, 73 Maygrove Road
 NW6 2EG
 t/f +44 020 7604 3818
 www.paul-o-architects.com