

rev	date	description	issued by	checked by
C1	05.08.15	First issue for Construction	RR	JD
C2	19.08.15	As per DTM comments	RR	JD
C3	30.10.15	As per Client request	RR	JD
C4	29.10.15	As per ACA review 23 oct 2015 - meeting notes	RR	DB
C5	16.11.15	As discussed in ACA review 11.11.15	RR	JD
C6	27.11.15	Floor Finish key added	RR	JD
C7	20.01.16	As per client comments 08.11.15 & SE MJ	RR	JD
C8	01.02.16	Plot 21 updated	RR	JD
C9	12.02.16	Home Office Tags added	RR	JD

Received	Initial	Date
RYDON	RA	23 FEB 16

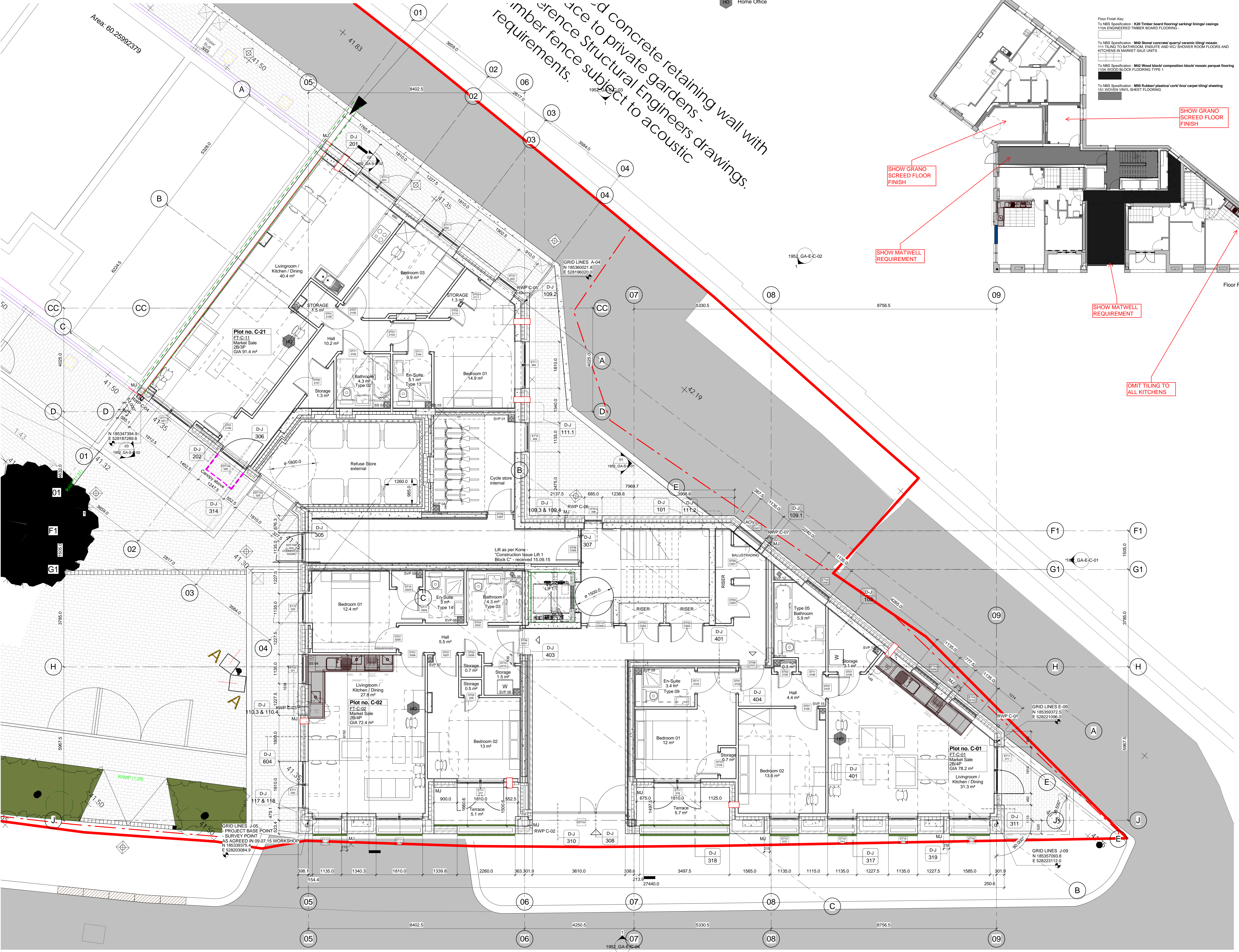
Client

Status A - No Comments

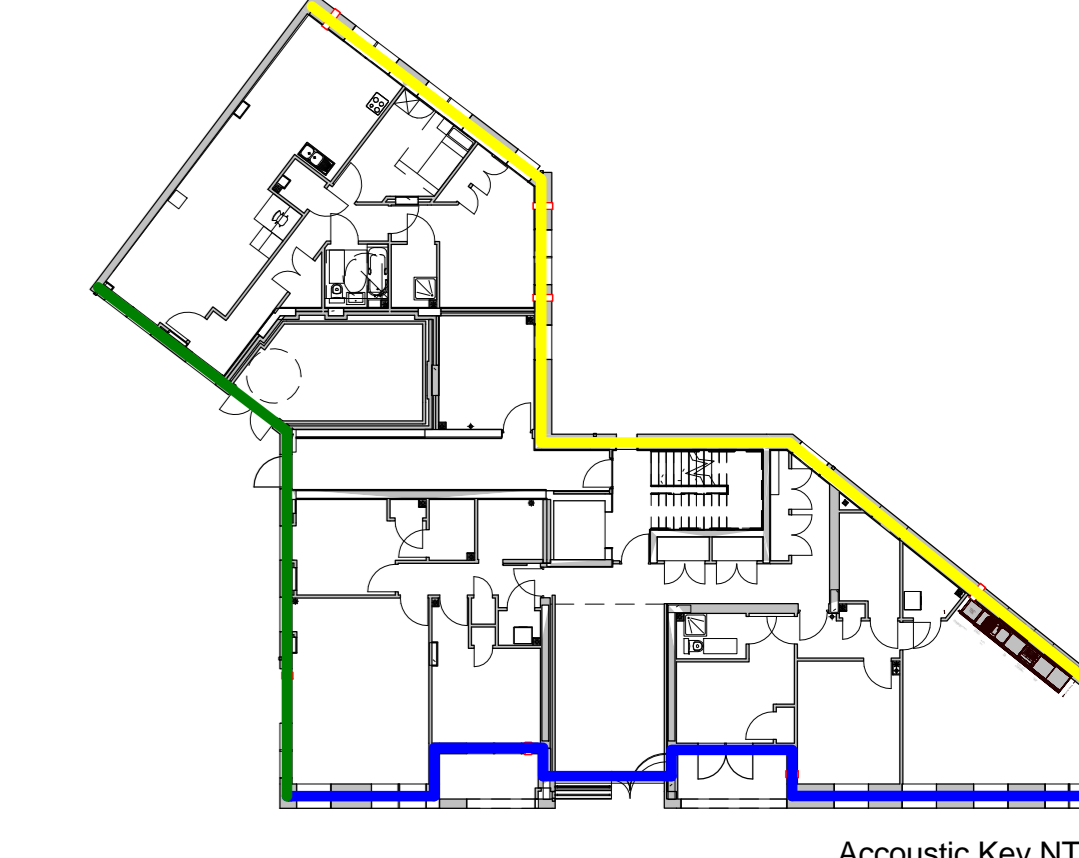
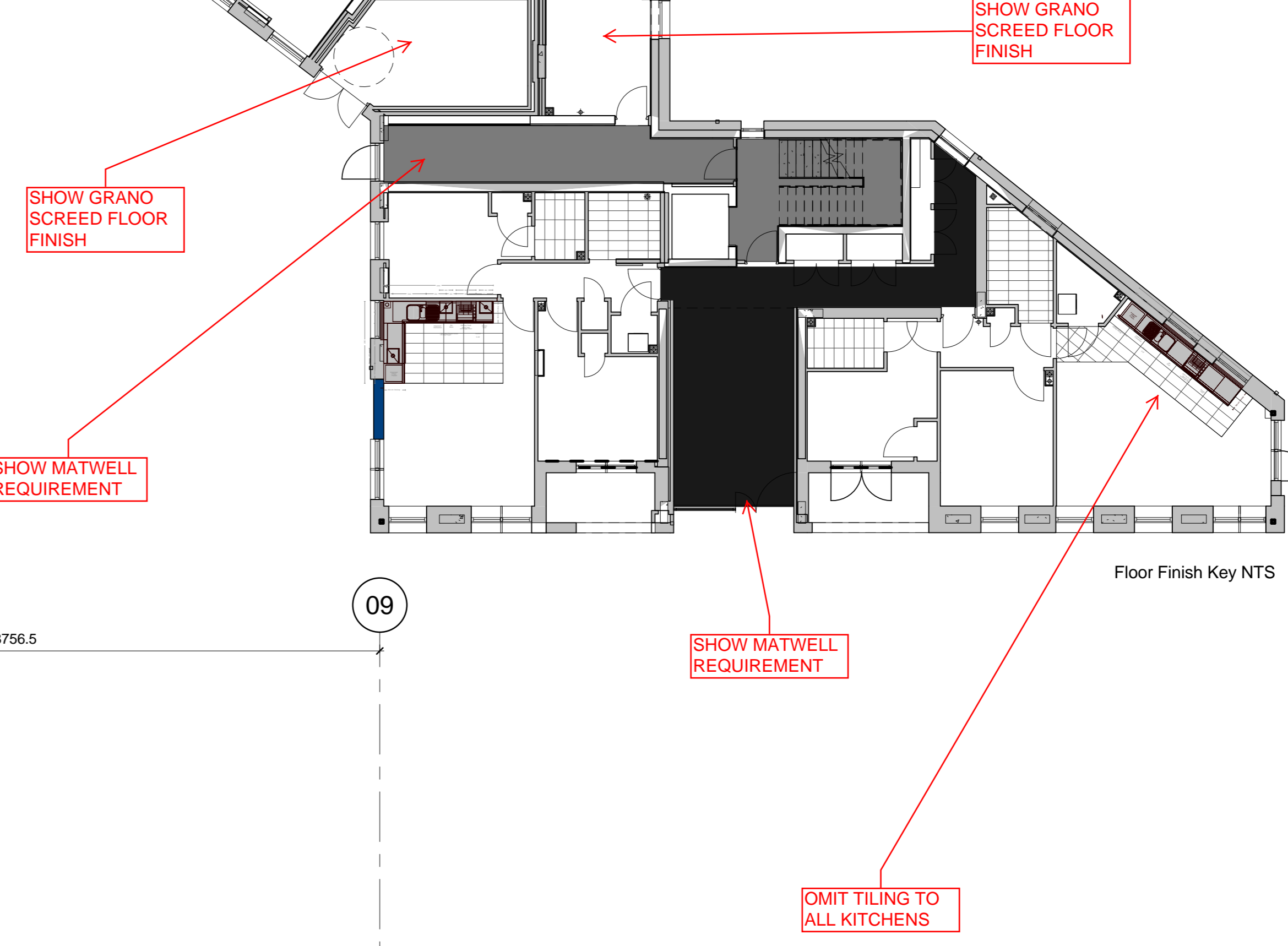
Status B - Comments, Review & Resubmit

Status C - Rejected

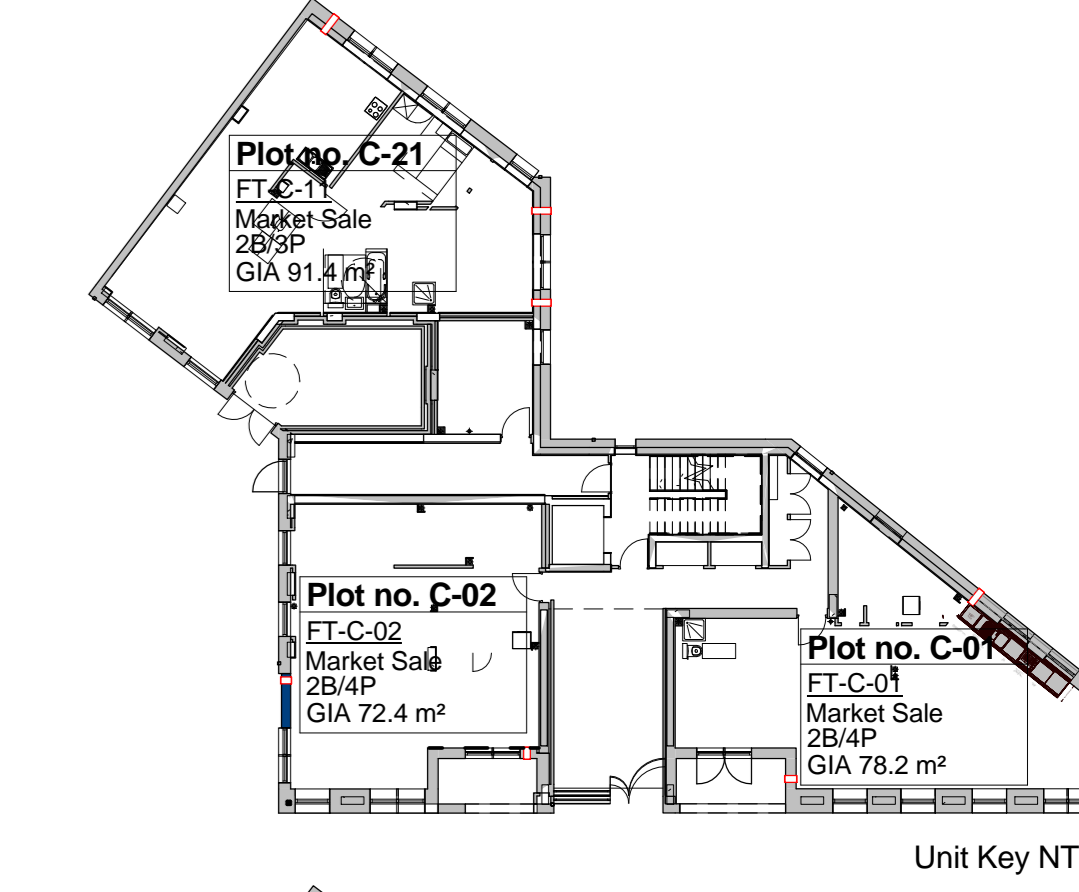
For Information Only



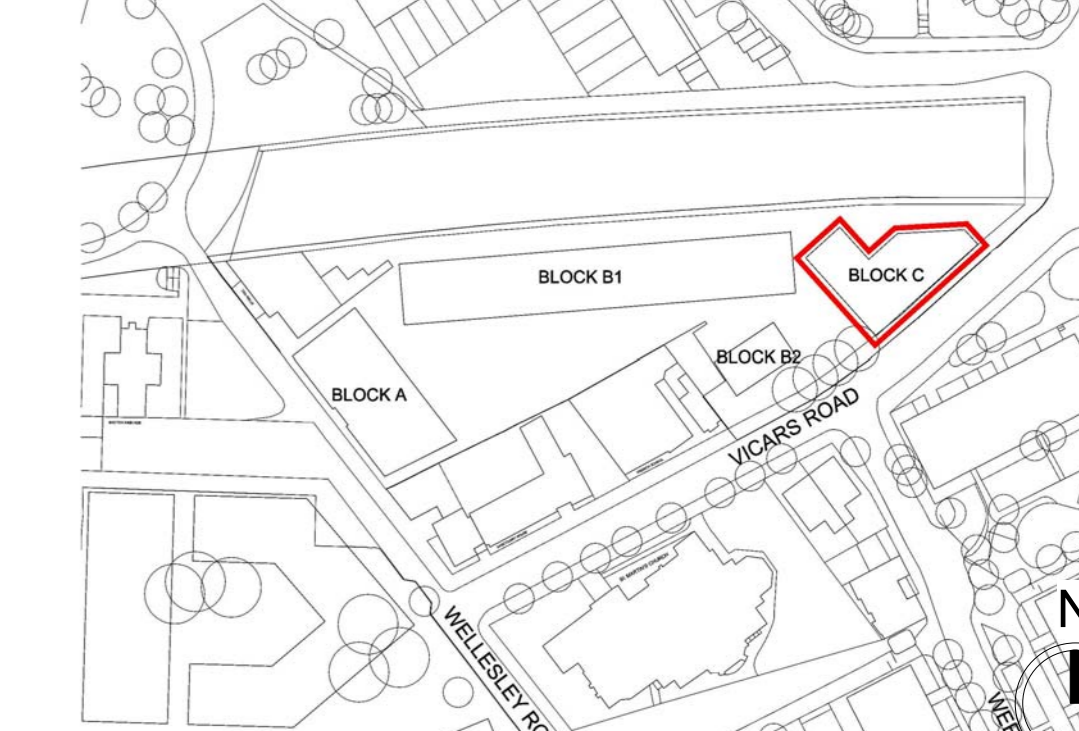
Floor Finish Key:
To NBS Specification: K20 Timber board flooring/sarking/living/ceings
10A ENGINEERED TIMBER BOARD FLOORING
To NBS Specification: M40 Stone/concrete quarry ceramic tiling/mosaic
111 TILING TO BATHROOM, ENSUITE AND VIC SHOWER ROOM FLOORS AND
KITCHENS IN MARKET SALE UNITS
To NBS Specification: M43 Wood block/composition block/mosaic parquet flooring
10A WOOD BLOCK FLOORING TYPE 1
To NBS Specification: M88 Rubber/plastic/cork/linoleum carpet tiling/sheeting
151 WOVEN VINYL SHEET FLOORING



BLOCK C
KEY: Refer to Peter Brett Associates Acoustics Analysis
Bacton Estate Stage E Acoustic Report - Figure 2
Specification 1
Specification 2
Specification 3
Specification 4



BLOCK C
KEY: Refer to ACA D-TV SERIES
WT-RC1
WT-RC2
WT-RC3
WT-RC4
WT-RC5
WT-RC6
WT-RC7
WT-RC8
WT-RC9
WT-RC10
WT-RC11
WT-RC12
WT-RC13
WT-RC14
WT-RC15
WT-RC16
WT-RC17
WT-RC18
WT-RC19
WT-RC20
WT-RC21
WT-RC22
WT-RC23
WT-RC24
WT-RC25
WT-RC26
WT-RC27
WT-RC28
WT-RC29
WT-RC30
WT-RC31
WT-RC32
WT-RC33
WT-RC34
WT-RC35
WT-RC36
WT-RC37
WT-RC38
WT-RC39
WT-RC40
WT-RC41
WT-RC42
WT-RC43
WT-RC44
WT-RC45
WT-RC46
WT-RC47
WT-RC48
WT-RC49
WT-RC50
WT-RC51
WT-RC52
WT-RC53
WT-RC54
WT-RC55
WT-RC56
WT-RC57
WT-RC58
WT-RC59
WT-RC60
WT-RC61
WT-RC62
WT-RC63
WT-RC64
WT-RC65
WT-RC66
WT-RC67
WT-RC68
WT-RC69
WT-RC70
WT-RC71
WT-RC72
WT-RC73
WT-RC74
WT-RC75
WT-RC76
WT-RC77
WT-RC78
WT-RC79
WT-RC80
WT-RC81
WT-RC82
WT-RC83
WT-RC84
WT-RC85
WT-RC86
WT-RC87
WT-RC88
WT-RC89
WT-RC90
WT-RC91
WT-RC92
WT-RC93
WT-RC94
WT-RC95
WT-RC96
WT-RC97
WT-RC98
WT-RC99
WT-RC100



LOCATION PLAN 1:1000

