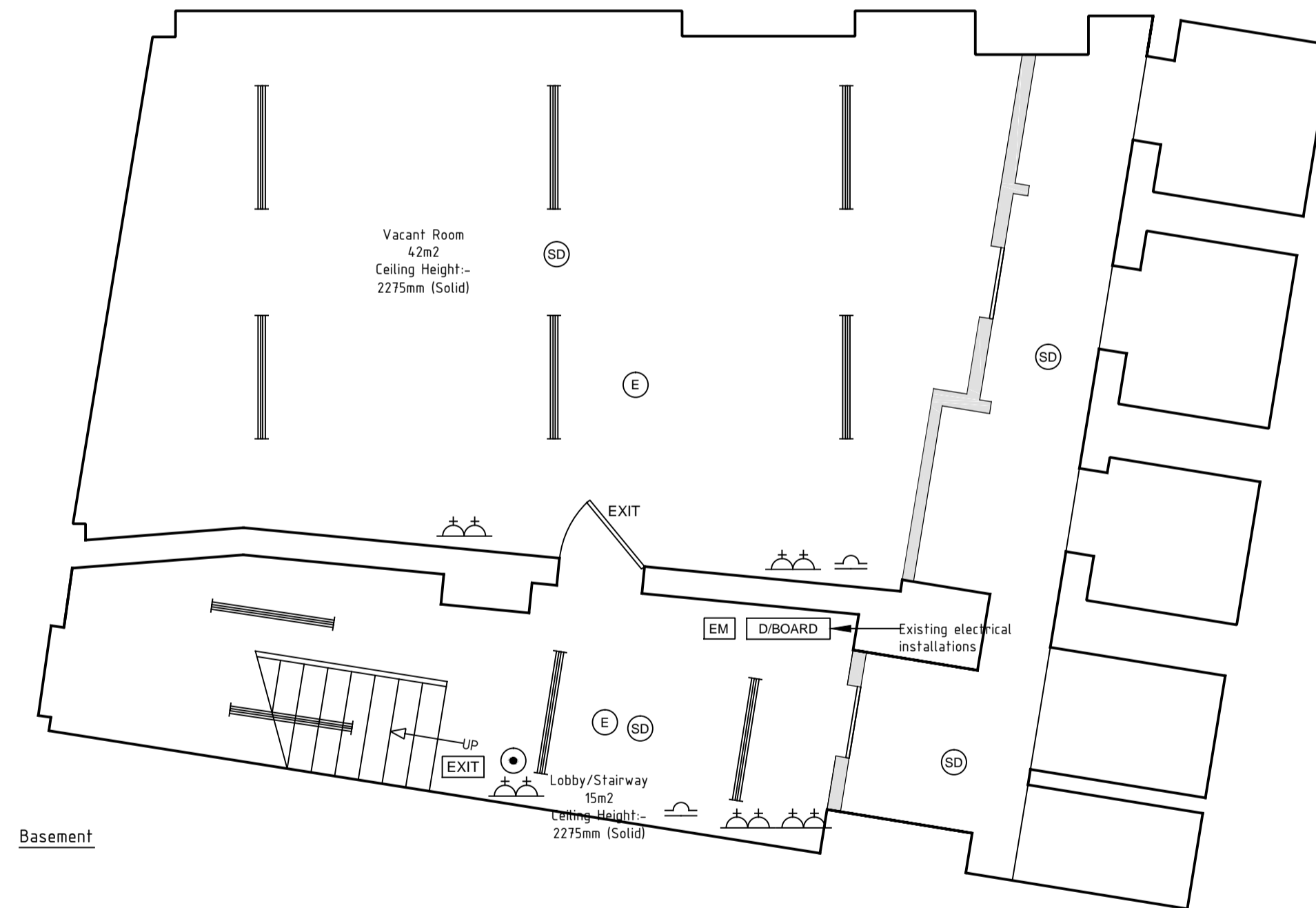


Ground Floor



Basement

Electrical Works

The Electrical contractor must be enrolled with the National Inspection Council for Electrical Installation Contracting (NICEIC) and shall upon demand submit proof of this to the client and the Project Manager.

All electrical works, materials used and equipment installed is to be carried out in accordance with British Standards and IEE Edition Regulations for Electrical Installations.

The Electrician will be responsible to provide all Temporary Lighting and power for the full duration of the contract.

Ground Floor

The electrician is to remove any distribution boards and relocate them to the basement level (with existing electrical equipment). All distribution boards to be re-used/amended where necessary or replaced upon relocation.

The Electrician must include for all conduits within the floor screed to the cash desks and the tagging system.

Cash desk requirements (per cash desk):-

- 4 x DSSO
- 2 x Data/Network Points
- Cables will need to be channelled into the floor slab

Printer requirements:-

- 2 x DSSO
- 2 x Data/Network Points

Xerox requirements:-

- 2 x DSSO
- 2 x Data/Network Points

Electrical contractor to install new over door heater - as shown on the plan.

Electrical contractor to install 'Last Man Out' switch as shown on plan or alternative location.

Electrical contractor to install all new sockets/Data as shown on the plan.

Managers Office power layout as shown on plan '1008 300 GA/Dec/Flooring' labeled 'Office Layout Elevation'.

Basement

The Electrician is to re-use/amend the existing Distribution Board.

Electrical contractor to install all new sockets/Data as shown on the plan.

Lighting

Ground Floor - Sales Area

Electrical contractor to allow to remove the existing light fittings and supply and fit a new lighting layout as shown on the plan.

Ground Floor - Toilet/Kitchen-Managers Office/Lobby

Electrical contractor to allow to remove the existing light fittings and supply and fit a new lighting layout as shown on the plan.

Basement - All Areas

Electrical contractor to allow to remove the existing light fittings and supply and fit a new lighting layout as shown on the plan.

Emergency Lighting

Ground and First Floor

Refer contractor to upgrade existing system to suit new layout (refer to plans). The electrician is to note that the positions are purely indicative and should ensure that the system is designed and installed in accordance with BS 5266 pt. 1 and all latest revisions.

Fire signage should be designed and installed in accordance with Approved Document-B Section 5.36 & BS 5266 Part 1 and all latest revisions.

The Electrician must provide one copy of the NICEIC Electrical Installation Certificate on completion along with NICEIC Emergency Lighting Completion Certificates.

Fire Alarm/Smoke Detection

Ground Floor & Basement

Electrical contractor to allow to service, test, adapt and upgrade existing system to suit new layout and fire alarm panel. The electrician is to note that the positions are purely indicative and should ensure that the system is designed and installed in accordance with BS 5839 and all latest revisions.

Electrical contractor to ensure that the fire alarm link to the floors above is retained.

Electrical contractor to certify amended fire alarm system once complete.

Mechanical/HVAC Works

Ground - Sales Area

Contractor to allow to retain/reposition and service the existing air conditioning and ventilation systems.

Contractor to allow for the possible removal of a cassette unit, TBC

Ground - Kitchen-Managers Office

Contractor to install fresh air extract as shown on the plan.

HVAC Legend	
	Existing Air-Conditioning Cassette
	Extract Grill
	Air Input - Supply Grill
	Air Conditioning Control Panel

Proposed Lighting Legend - To be supplied by contractor	
	600x600mm Recessed LED Modular Light Fitting
	Wall Wash Fitting Light
	Adjustable Recessed Circular Light Fitting
	Fluorescent Tube Lighting

Fire Legend - To be supplied by contractor	
	Smoke detector
	Heat detector
	Fire Alarm control panel
	N-M illuminated emergency lighting
	N-M illuminated emergency exit signage complete with 'Picturegram' (no text)
	Non-illuminated emergency exit sign
	Break glass call point
	Fire alarm sounder
	Last man out - Key Switch

Electrical Legend - To be supplied by contractor	
	9kW Over door heater
	Electric wall heater
	Distribution board
	Electric Meter
	Hot water heater
	Double 13amp switched socket
	240v double 13amp switched under base shelf of merchandise unit
	Data/Network Point
	13amp Non-switched fused spur
	13amp switched fused spur

NOTES
The drawings, arrangements, annotations and graphical presentations on this document are the property of PPS Shopfitters Ltd who retains ownership and authorship of this document in its entirety.
Authorised use of this drawing is granted solely for the purpose of this specific project and location.
Designers and contractors must confirm all measurements on site prior to any works commencing.

CLIENT
Rymans
CONTRACT
160 Camden High Street
London
DRAWING TITLE
Proposed RCP and Small Power Works

SCALE
1:50 @ A1
DATE
07.04.2016
DRAWN BY
DE
DRAWING NO.
1008-500
No Revisions **Date**

Unit 4, Kingsthorpe Business Park,
Sturland Road
Northampton,
NN2 6NE
T: (01604) 791050
F: (01604) 791281
E: office@ppshopfitters.com