

SPECIFICATIONS

ALL DIMENSIONS ARE FINISHED AND NOT CARCASS DIMENSIONS

NOTES:

1.FRAME TO BE MANUFACTURED TO A HIGH QUALITY OF WORKMANSHIP SUITABLE FOR COMMERCIAL USE.

2. ALL FINISHES & WORKSHOP DRAWINGS TO BE APPROVED BY ID

3. MANUFACTURER TO RELAY ANY DISCREPANCIES TO SIGMA BEFORE WORKS CONTINUES

4. ALL FINISHES TO BE APPROVED BY SAMPLE

5. METAL/PLASTIC GUIDES ARE TO BE FITTED TO THE FEET OF ALL PIECES

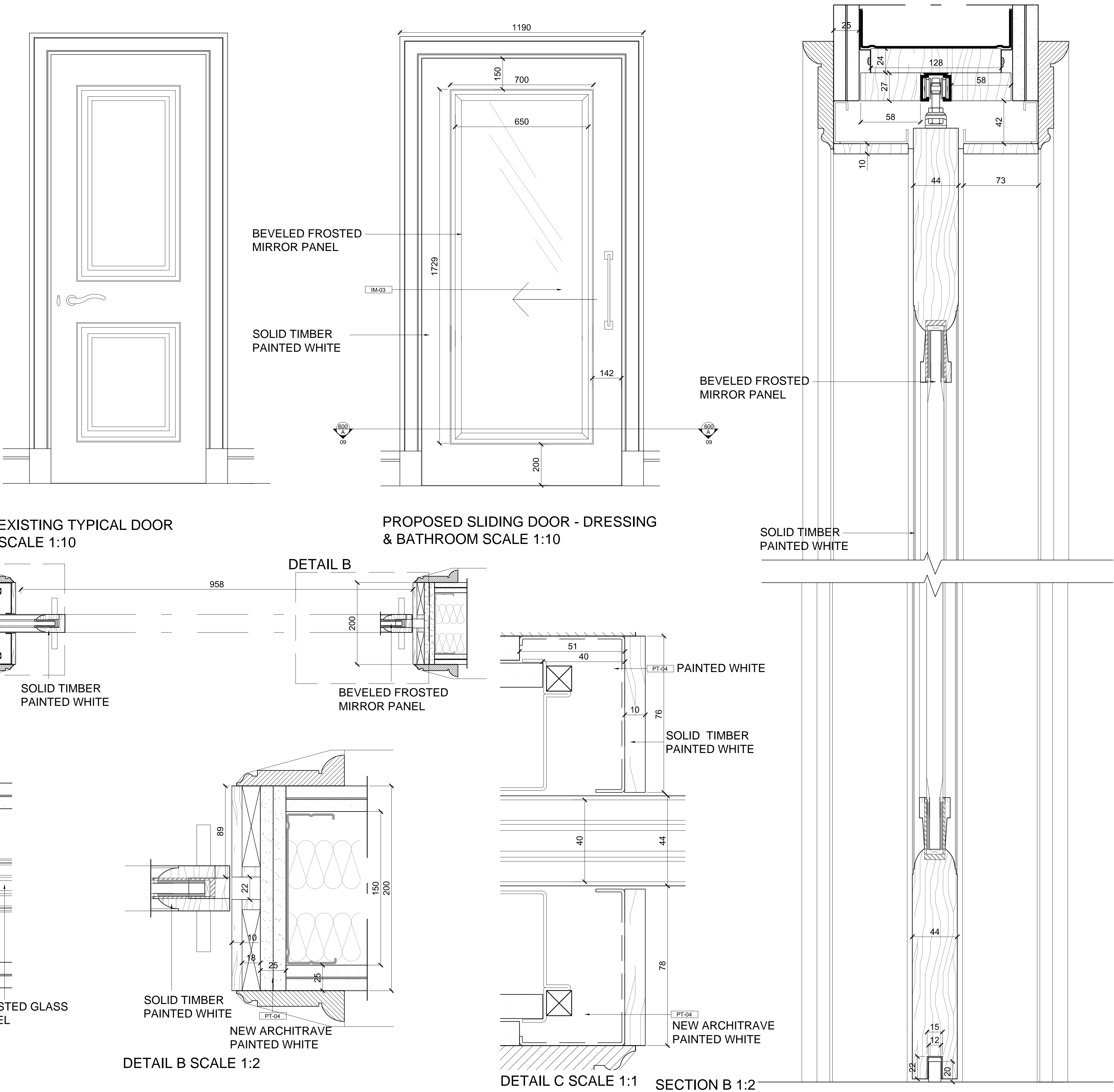
6. DRAWINGS SHOW DESIGN INTENT ONLY, MANUFACTURER TO CONFIRM ALL CHANGES FROM GENERAL DIRECTION SHOWN FOR SIGMA APPROVAL

7.UPHOLSTERY FABRIC AS PER SCHEDULE

8.CLASS 1, ALL FABRICS TO BE TREATED TO FIRE RESISTANCE.

IMPORTANT: ALL DOOR DIMENSIONS TO BE FOUND ON THE DOOR SCHEDULE

IMPORTANT: PROTOTYPE REQUIRED FOR SIGMA APPROVAL & ALL DIMENSIONS TO BE CHECK ON SITE



REVISIONS

Rev.	Date	Comment
A	28.01.16	INFILL PANEL DIMENSION ALTERED AND DOOR HANDLES RAISED
B	09.03.16	REMOVED GLASS PANELS, ADDED ONE MIRROR PANEL
TENDER		
© SIGMA SEIFERT INTERIORS 2014		
NOTES		
<div>1. THE DRAWING SHOW DESIGN INTENT ONLY. ALL DIMENSIONS TO BE CHECKED ON SITE PRIOR TO CONSTRUCTION OR PRODUCTION. CONSTRUCTION DETAILS TO BE CONFIRMED BY CONTRACTOR/ MANUFACTURER BY SUBMITTING SHOP DRAWINGS FOR DESIGNER'S APPROVAL.</div> <div>2. DESIGN / DRAWING IS NOT TO BE SCALED FOR PRODUCTION AND CONSTRUCTION PURPOSES</div> <div>3. ALL DISCREPANCIES AND OMISSIONS ON SITE MUST BE REPORTED TO DESIGNER FOR THEIR COMMENTS OR APPROVAL PRIOR TO COMMENCING WORK.</div> <div>4. ALL ELECTRICAL, LIGHTING, HVAC AND PLUMBING ISSUES TO BE REFERRED TO ENGINEER'S DRAWINGS PRIOR TO COMMENCEMENT OF WORKS.</div> <div>5. THE DESIGNS ARE SUBJECT TO APPROVAL BY STATUTORY AUTHORITIES AND ANY NECESSARY ALTERATIONS SHOULD BE MADE IF REQUIRED TO COMPLY WITH STATUTORY REQUIREMENTS.</div> <div>6. ALL DESIGN CONCEPTS AND DRAWINGS ARE THE PROPERTY OF SIGMA ARCHITECTURE AND INTERIORS AND COVERED BY COPYRIGHT. NO REPRODUCTIONS, ADAPTATIONS AND/OR COPIES MAY BE MADE WITHOUT WRITTEN PERMISSION BY SIGMA.</div>		
A1 Sheet		
<div>Project</div> <div>CHESTER TERRACE LONDON</div> <div>Title</div> <div>TYPICAL DOOR DETAILS</div> <div>EXISTING &amp; PROPOSED</div> <div><div>Date</div><div>11/11/14</div><div>Scale</div><div>1:10, 1:5, 1:2, 1:1</div></div> <div><div>Project No</div><div>SI7044</div></div> <div><div>Drwg No</div><div>600-06</div><div>Rev.</div><div>B</div></div>		
<div><div>SIGMA SEIFERT INTERIORS</div><div>SIGMA SEIFERT INTERIORS</div><div>1 Seagrave Road, London SW6 1RP</div><div>T: +44 (0)20 7935 6984 info@sigma-architects.com www.sigma-interiors.co.uk</div></div>		