

WATER USAGE FOR THE LADIES BATHING POND AT HAMPSTEAD HEATH

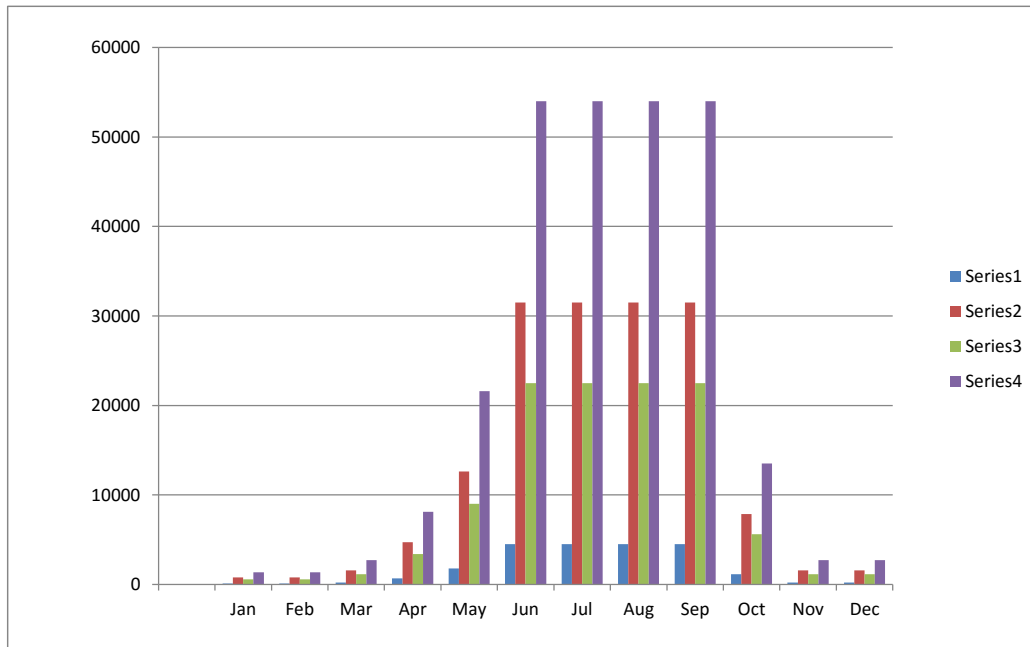
The following figures are based on the number of visits as advised by the City of London.

Visits for year are approximately 50,000

The visits are low during winter months and increase during the warmer periods.

To calculate the water usage a percentage of the numbers is used. Typically for this scenario we would look at use a 45% pro rata application.

		SERIES 1	SERIES 2	SERIES 3	SERIES 4
	VISITS	PRO RATA	LITRES USED SHOWERING	LITRES USED WC's	TOTAL WATER
Jan	250	113	788	563	1350
Feb	250	113	788	563	1350
Mar	500	225	1575	1125	2700
Apr	1500	675	4725	3375	8100
May	4000	1800	12600	9000	21600
Jun	10000	4500	31500	22500	54000
Jul	10000	4500	31500	22500	54000
Aug	10000	4500	31500	22500	54000
Sep	10000	4500	31500	22500	54000
Oct	2500	1125	7875	5625	13500
Nov	500	225	1575	1125	2700
Dec	500	225	1575	1125	2700
Total	50000	22500	157500	112500	270000



References

Amount of water used in a shower is 62 litres for 8 minutes, assume each visitor takes a 1 minute shower

Amount of water used in a flush is averaged at 5 litres per flush - toilets are dual flush 4/6 litres

<http://www.waterwise.org.uk/news.php/11/showers-vs.-baths-facts-figures-and-misconceptions>

Note

The information provided herein is offered as an approximate guide only and IC Mining accept no responsibility for its accuracy or any consequences from anyone using this data.