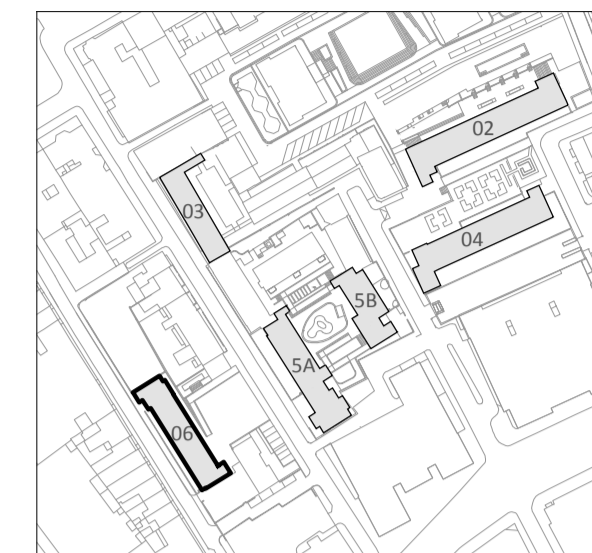


This drawing and design is for use solely in connection with the project described below. The drawing and design is the copyright of Avanti Architects Ltd. and must not be re-issued, loaned or copied without written consent. All dimensions and setting out to be checked on site before construction. This drawing is to be read in conjunction with all other information relevant to the project. Any apparent discrepancy is to be brought to the attention of Avanti Architects Ltd. Do not scale from this drawing.

Notes



BUILDING KEY
 02-Slemundsburly
 03-Devenshire
 04-Windmill
 5A-Richbell
 5B-Springwater
 06-Falcon

KEY (PLAN)
 [Pattern] Brickwork
 [Pattern] Blockwork
 [Pattern] Precast Concrete

KEY (WASTE SERVICES)
 Existing SVP (position assumed)
 Proposed AAV
 Proposed SVP
 Existing RWP (positions assumed)
 Existing RWO (positions assumed)
 Proposed RWO
 Proposed RWP

1. Survey information missing - existing flat layouts as assumed.

Waste services (incl. key) indicated in coordination with M+E Information

CONSTRUCTION ISSUE (Package 4)

TENDER ISSUE (Package 4)

TENDER ISSUE
 Plans amended to suit revised survey information. Window and door tags added.

TENDER ISSUE
 Dimensioned floor plans

Interim work in progress Superstructure package (TP3) issue

TENDER ISSUE
 Coordination with updated survey information.

Revision	Date	Drawn by	Checked by	Description
A		IMA		
B		IMA		
C		IMA		
D		IMA		
E		IMA		
F		IMA		
G		IMA		

Scale 1:50 **Size** A1 **Date First Issue** 10/07/15

Drawn by IMA/SJ **Checked by** AM

Project
 Tybald's Estate
 FALCON

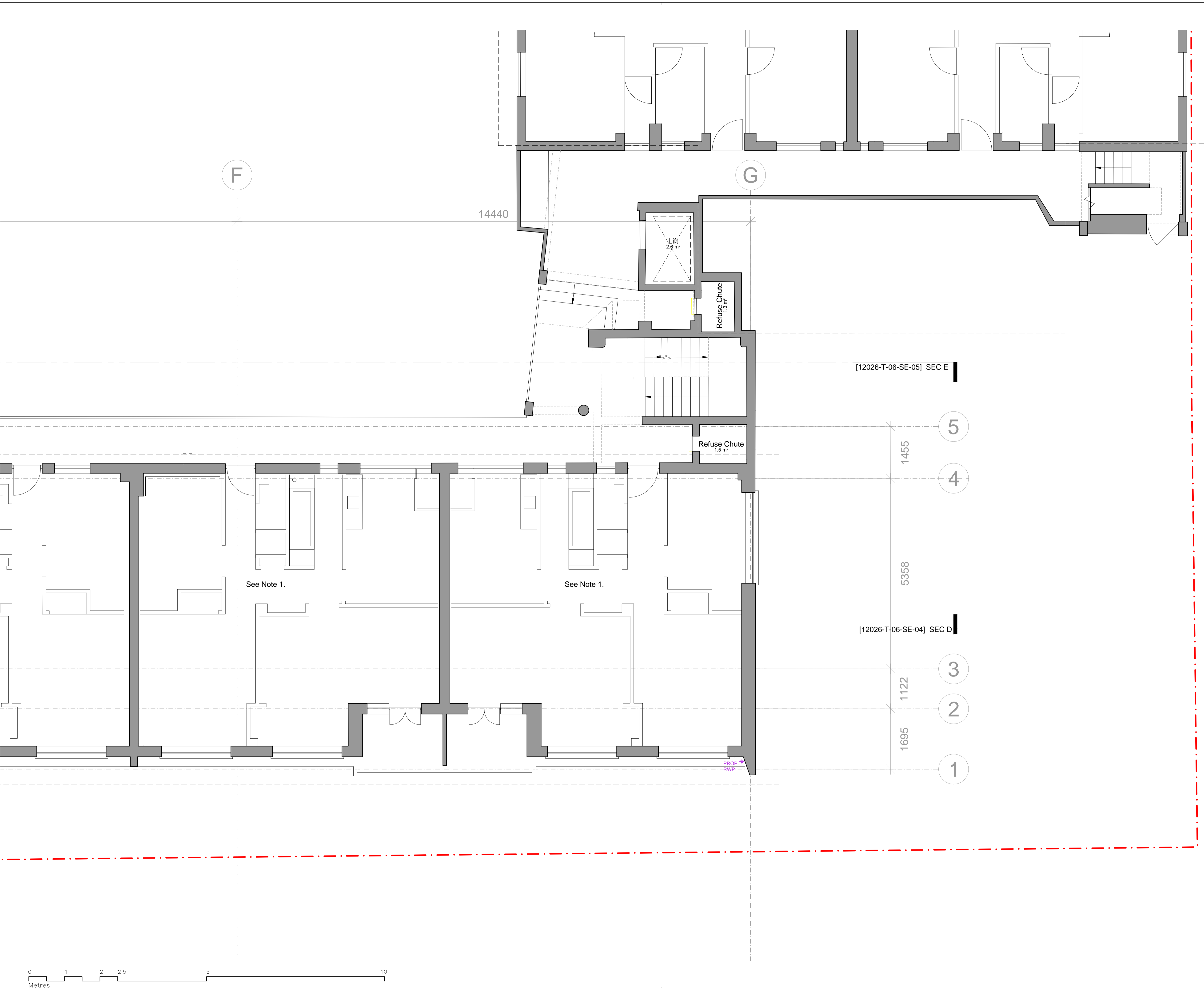
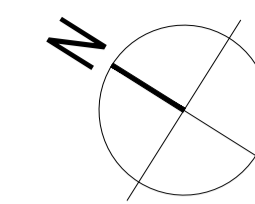
Drawing
 TYPICAL FLOOR PLAN
 1ST-6TH FLOOR

Drawing number 12026-T-06-GA-02-02 **Revision** G

Status
 CONSTRUCTION

AVANTI ARCHITECTS

© Avanti Architects Ltd www.avantiarchitects.co.uk
 361-373 City Road +44 (0) 20 7278 3060
 London EC1V 1AS aa@avantiarchitects.co.uk



F

G

14440

Lift
2.8 m²

Refuse Chute
1.3 m²

[12026-T-06-SE-05] SEC E

5

1455

4

See Note 1.

See Note 1.

5358

[12026-T-06-SE-04] SEC D

3

1122

2

1695

1

PROP. RWP

