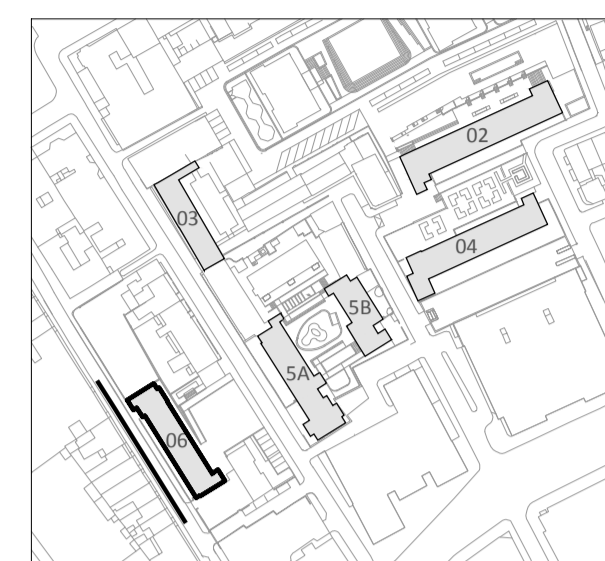


This drawing and design is for use solely in connection with the project described below. The drawing and design is the copyright of Avanti Architects Ltd. and must not be re-issued, loaned or copied without written consent. All dimensions and setting out to be checked on site before construction. This drawing is to be read in conjunction with all other information relevant to the project. Any apparent discrepancy is to be brought to the attention of Avanti Architects Ltd. Do not scale from this drawing.

Notes



BUILDING KEY
 02-Bremundsbury
 03-Devonshire
 04-Windmill
 5A-Richbell
 5B-Springwater
 06-Falcon

Please note: Proposed floor levels have been taken from plan surveys, floor levels indicated in surveyed elevations are inconsistent with plan surveys.

- KEY**
- Brickwork
 - Precast Concrete Cladding
 - Aluminium Rainscreen Cladding
 - Ideal Combi Rainscreen Panel
 - Ventilation Gril
 - Air Brick Ventilation

GRC coping/banding setting out to specialist subcontractor advice, to be as follows:
 -EQ1 - 600mm (at corners)
 -EQ2 and above - Length to be divided evenly between corners. Length not to exceed 3m.

| Revision | Date | Checked by | Description |
|----------|----------|------------|----------------------------------------------------------------------|
| A | 30/10/15 | IMA | Coordination with updated GA's and Sections |
| B | 27/11/15 | CS | TENDER ISSUE (Package 4) |
| C | 14/01/16 | AM | CONSTRUCTION ISSUE (P4) |
| D | 14/01/16 | JW | CONSTRUCTION ISSUE (Package 4) Drawing amended to client comments |

| Scale | Size | Date First Issue |
|-------|------|------------------|
| 1:100 | A1 | 10/07/15 |

Drawn by
IMASJ

Checked by
AM

Project
Tybald's Estate
FALCON

Drawing
SW ELEVATION

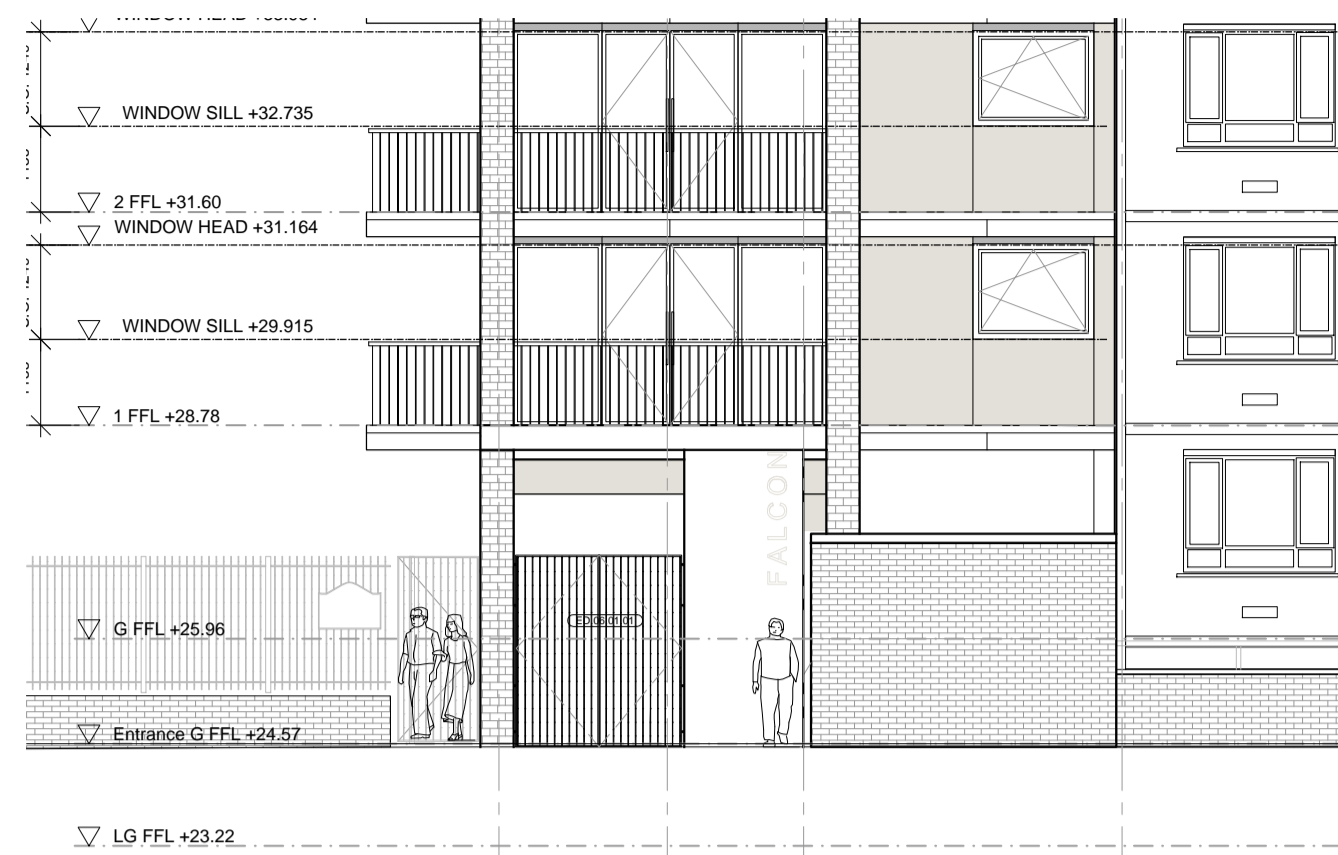
Drawing number
12026-T-06-EL-01

Revision
D

Status
CONSTRUCTION



© Avanti Architects Ltd www.avantiarchitects.co.uk
 361-373 City Road + 44 (0) 20 7278 3060
 London EC1V 1AS aa@avantiarchitects.co.uk



Detail of Elevation showing Entrance Portico



SW Sectional Elevation to Old Gloucester Street

